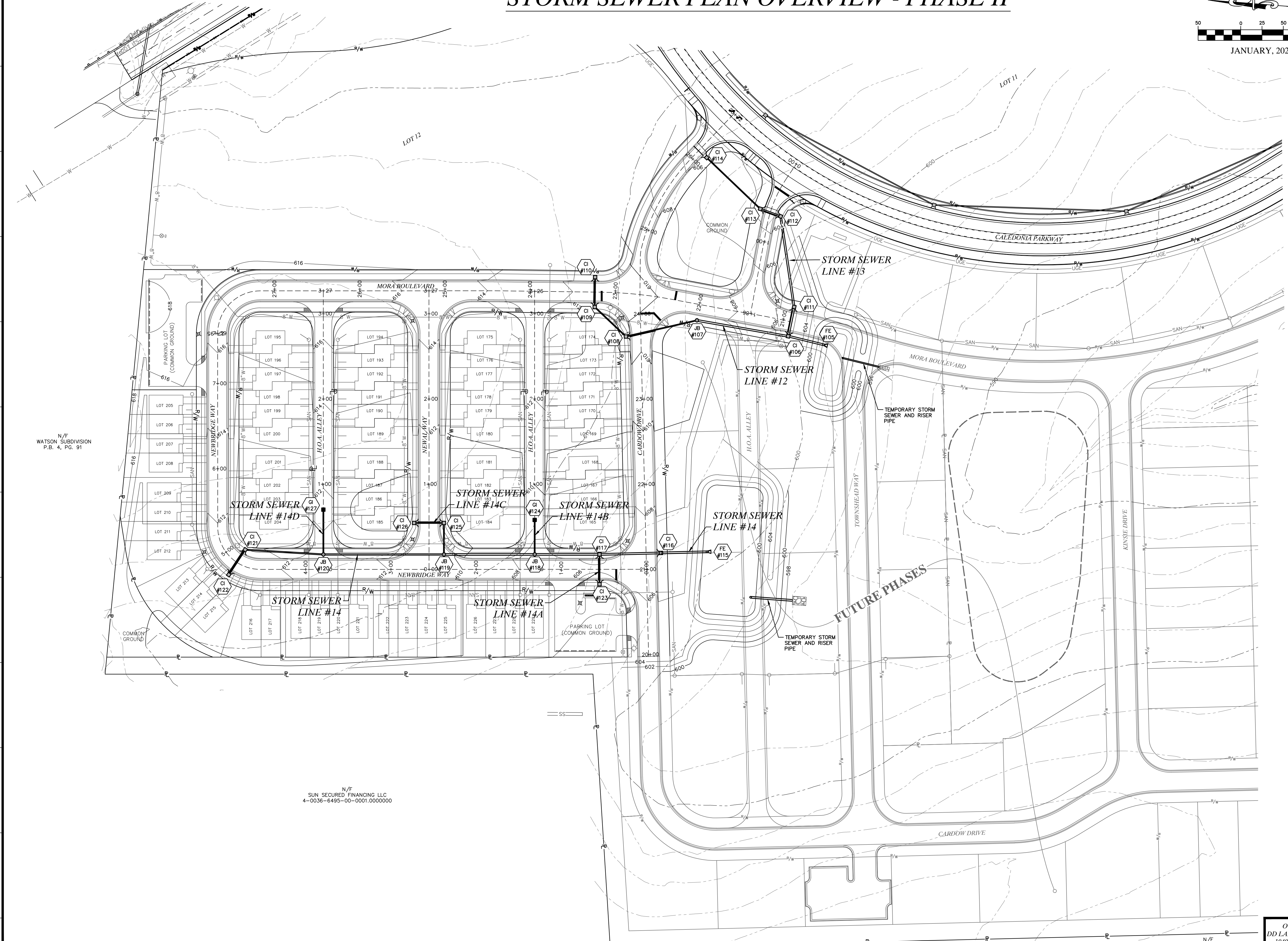
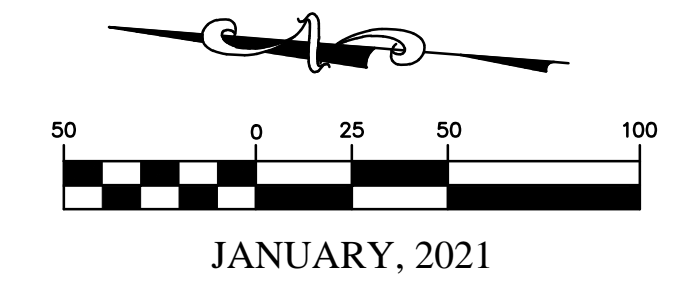


# STORM SEWER PLAN OVERVIEW - PHASE II



N/F  
WATSON SUBDIVISION  
P.B. 4, PG. 91

N/F  
SUN SECURED FINANCING LLC  
4-0036-6495-00-0001.0000000

OWNER/DEVELOPER:  
DD LAND DEVELOPMENT, LLC  
10407 BAUR BLVD, SUITE B  
ST. LOUIS, MO 63132

N/F  
ROLLING MEADOWS LTD  
4-0036-2011-00-0002.3100000

636-594-0540 (tel.)  
636-594-0512 (fax)  
m@ochran.com  
ochran.com

**COCHRAN**

- Civil Engineering
- Land Surveying
- Architecture
- Site Development
- General Consulting
- Master Planning

Missouri State Certificate  
of Authority Numbers:  
Survey : 000380  
Engineering : 001655  
Architecture : 2002014240

Three working days prior to  
the start of any excavation,  
call 1-800-855-8112 for utility  
location information.

All OSHA rules & regulations  
and state rules & regulations  
pertaining to trenching, shoring,  
and excavation shall be strictly followed  
(ie. trenching, shoring, etc.)

**THE STREETS OF CALEDONIA**  
**PHASE II RESIDENTIAL**  
**O'FALLON, MISSOURI**

**STORM SEWER PLAN OVERVIEW - PHASE II**

| DATE       | BY            | APPROVED BY |
|------------|---------------|-------------|
|            | JMM           | ERR         |
| DATE:      | JAN. 13, 2021 |             |
| SCALE:     | 1" = 60'      |             |
| PROJ. NO.: | 17-6821       |             |
| DWG. NO.:  | C9.0          |             |

Drawing name: E:\17-6821 - 260 Acre Tract along Hwy 40, O'Fallon, MO\AutoCAD Drawings\6821 - Plan Sheets\Construction Drawings\PH2 Residential Plans\18\_Storm Sewer Plan Overview Phase 2.dwg Tab: STORM OVERVIEW PH2 Plotted on: Jan 13, 2021 - 12:53pm Plotted by: tlcrowe