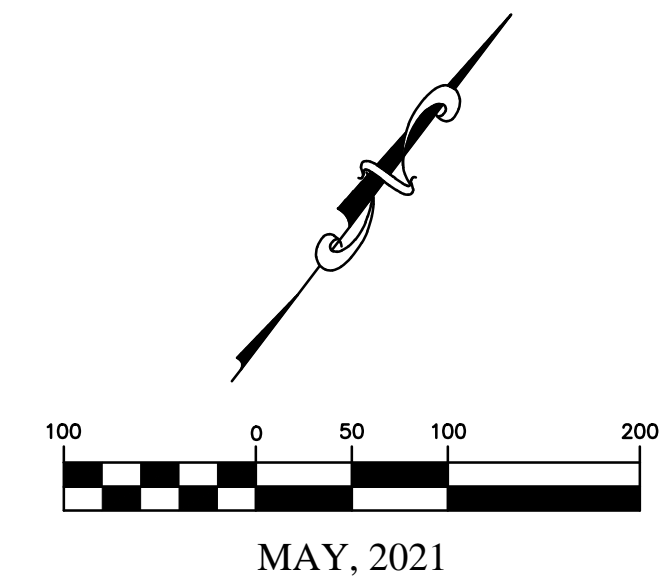


OVERVIEW PLAN - PHASE 3



MAY, 2021

PHASE 3A LOT DATA	
LOT TYPE	PROPOSED LOTS
50' WIDE LOTS	21 LOTS
60' WIDE LOTS	12 LOTS
62' WIDE LOTS	19 LOTS
72' WIDE LOTS	25 LOTS
TOTAL UNITS	77 LOTS

PHASE 3B LOT DATA	
LOT TYPE	PROPOSED LOTS
50' WIDE LOTS	55 LOTS
60' WIDE LOTS	10 LOTS
62' WIDE LOTS	23 LOTS
72' WIDE LOTS	25 LOTS
TOTAL UNITS	113 LOTS

636-584-0540 (tel.)
636-584-0512 (fax)
mail@ochran.com

CHORAN
Civil Engineering
Land Surveying
Architecture
Site Development
General Consulting
Master Planning

Missouri State Certificate of Authority Numbers:
Survey: 000380
Engineering: 001655
Architecture: 2002014240

Three working days prior to the start of any excavation call 1-800-463-8372 for utility location information.

All OSHA rules & regulations in effect at the time of construction shall be strictly followed (i.e. trenching, blasting, etc.)

STATE OF MISSOURI
11/14/21
ELLIOTT R. REED
Professional Engineer
NUMBER PE-2006002845

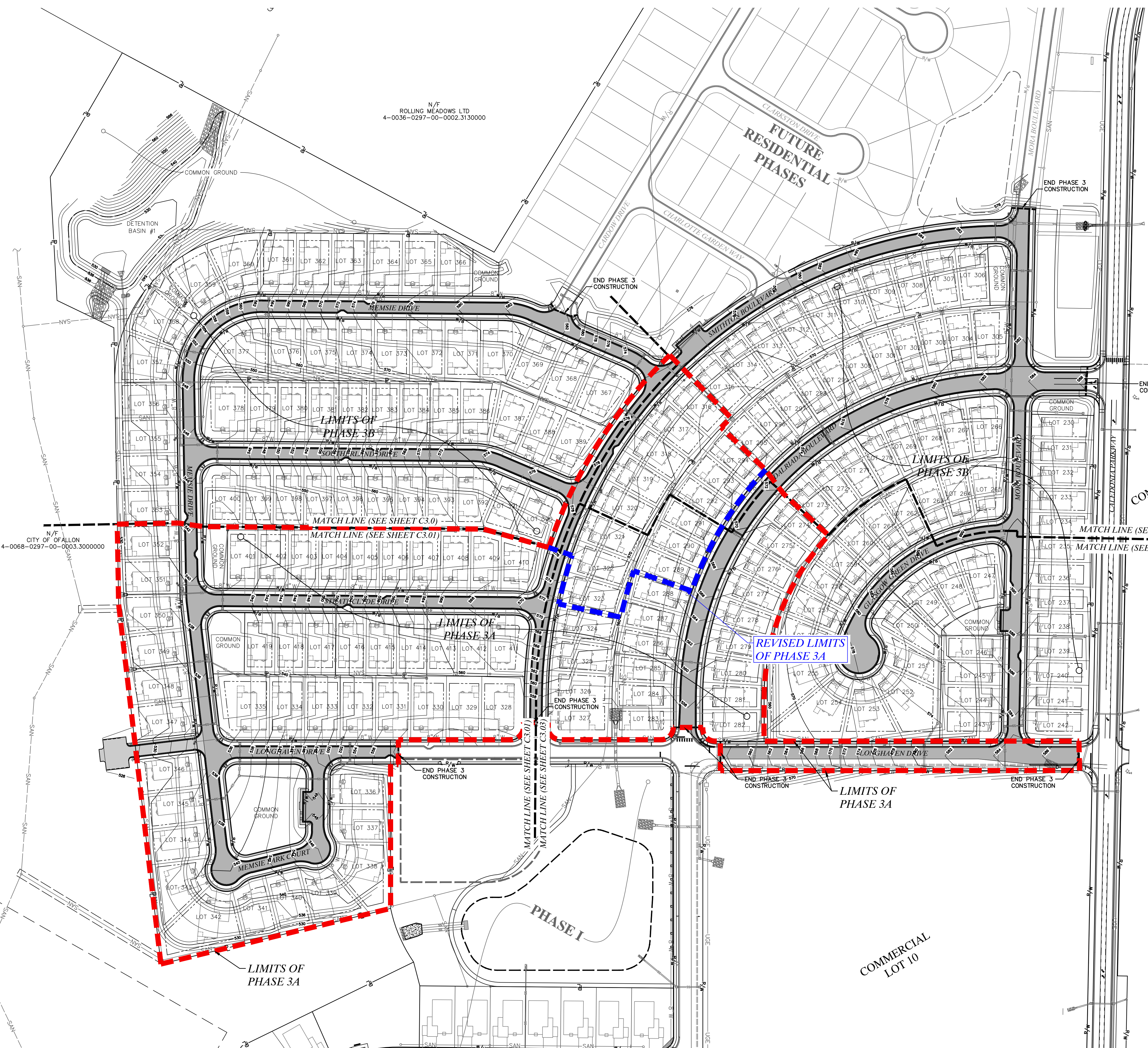
THE STREETS OF CALEDONIA
PHASE 3 RESIDENTIAL
O'FALLON, MISSOURI

DATE	REVISION	APPROVED BY	DATE	REVISION	APPROVED BY
06-29-21	REVIEW COMMENTS	JMM	JUL. 20, 2021		ERR
11-11-21	SITE CHANGE ORDER #1	JMM			ERR

OWNER/DEVELOPER:
DD LAND DEVELOPMENT, LLC
10407 BAUR BLVD, SUITE B
ST. LOUIS, MO 63132

17-6821

C1.02



Drawing name: E:\17-6821 - 260 Acre Tract along Hwy 40, O'Fallon, MO\AutoCad Drawings\6821 - Plan Sheets\Construction Drawings\PH3 Residential Plans\02_Overview Plan Phase 3.dwg Tab: OVERVIEW PLAN PH3 Plotted on: Nov 11, 2021 - 12:45pm Plotted by: jmeyer