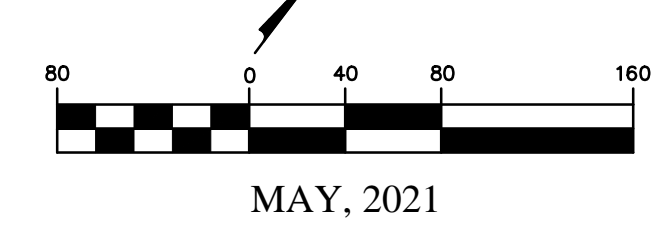
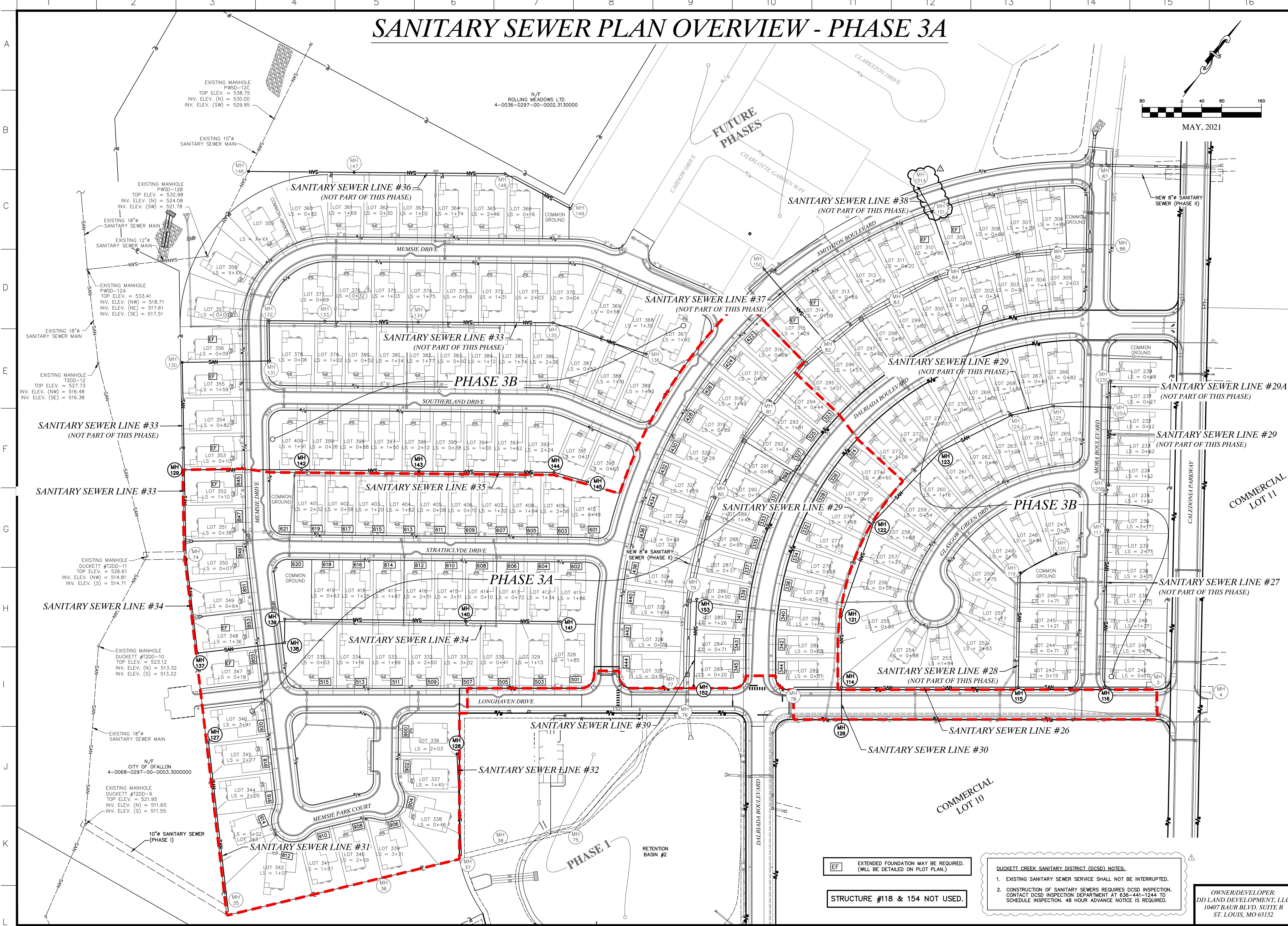


# SANITARY SEWER PLAN OVERVIEW - PHASE 3A



MAY, 2021



636-584-0540 (tel.)  
636-584-0512 (fax)  
636-584-0512 (cell)  
mailto:ochran@ochran.com  
www.ochran.com

**UCHRAN**  
Civil Engineering  
Land Surveying  
Architecture  
Site Development  
General Consulting  
Master Planning

Missouri State Certificate of Authority Numbers:  
Survey: 000380  
Engineering: 001655  
Architecture: 2002104240

Three working days prior to the start of any excavation, call 1-800-MISSOURI for utility location information.

All OSHA rules & regulations construction required by these plans shall be strictly followed (i.e. trenching, blasting, etc.).

STATE OF MISSOURI  
Professional Engineer  
Blair S. Ochan  
NUMBER PE-2006002845

THE STREETS OF CALEDONIA  
PHASE 3 RESIDENTIAL  
O'FALLON, MISSOURI

**SANITARY SEWER PLAN OVERVIEW - PHASE 3A**

DATE	REVISION	BY	APP'D BY
06-29-21	REVIEW COMMENTS	JMM	ERR
11-11-21	SITE CHANGE ORDER #1	JMM	ERR

DATE: MAY 25, 2021  
SCALE: 1" = 80'  
PROJ. NO.: 17-6821  
SHEET NO.: C11.0A

EF EXTENDED FOUNDATION MAY BE REQUIRED. (WILL BE DETAILED ON PLOT PLAN.)

STRUCTURE #118 & 154 NOT USED.

- DUCKETT CREEK SANITARY DISTRICT (DCSD) NOTES:**
- EXISTING SANITARY SEWER SERVICE SHALL NOT BE INTERRUPTED.
  - CONSTRUCTION OF SANITARY SEWERS REQUIRES DCSD INSPECTION. CONTACT DCSD INSPECTION DEPARTMENT AT 636-441-1244 TO SCHEDULE INSPECTION. 48 HOUR ADVANCE NOTICE IS REQUIRED.

OWNER/DEVELOPER:  
DD LAND DEVELOPMENT, LLC  
10407 BAUR BLVD, SUITE B  
ST. LOUIS, MO 63132

DWG NAME: F:\17-6821 - 260 Acre Tract along Hwy 40, O'Fallon, MO\AutoCAD Drawings\PH3 Residential\Construction Drawings\PH3 Residential\Sanitary Sewer Plan Overview Phase 3a.dwg LAYOUT TAB: SANITARY SEWER PLAN OVERVIEW PH3A PLOTTED ON: Nov 11, 2021 - 1:13pm PLOTTED BY: jmeyer