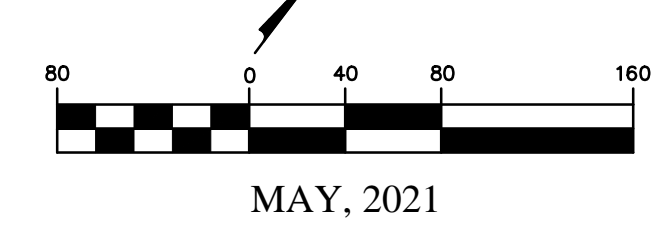


SANITARY SEWER PLAN OVERVIEW - PHASE 3B



MAY, 2021

636-584-0540 (tel.)
636-584-0512 (fax)
mail@ochran.com
www.ochran.com

CHORAN

Civil Engineering
Land Surveying
Architecture
Site Development
General Consulting
Master Planning

530A E. Independence Dr.
Union, Missouri 63084

Missouri State Certificate of Authority Numbers:
Survey: 000380
Engineering: 001655
Architecture: 2002104240

Three working days prior to the start of any excavation, call 1-800-485-8745 for utility location information.

All OSHA rules & regulations and construction required by these plans shall be strictly followed (i.e. trenching, blasting, etc.).

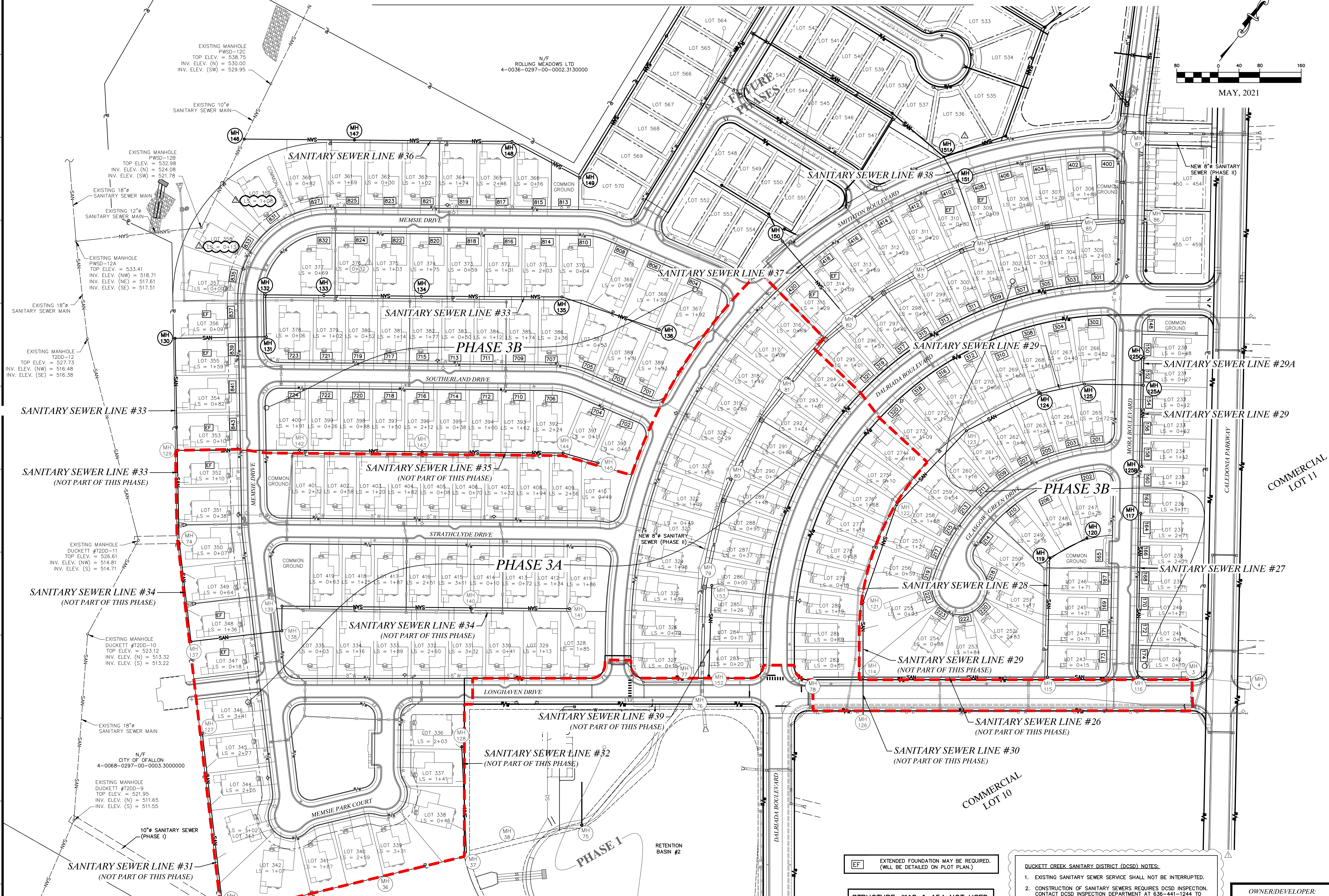
STATE OF MISSOURI
ELIOTT T. REED
Professional Engineer
NUMBER PE-2006002845

THE STREETS OF CALEDONIA
PHASE 3 RESIDENTIAL
O'FALLON, MISSOURI

SANITARY SEWER PLAN OVERVIEW - PHASE 3B

DATE	REVISION	BY	APP'D BY
06-29-21	REVIEW COMMENTS	JMM	ERR
11-11-21	SITE CHANGE ORDER #1	JMM	ERR
12-03-21	DUCKETT REVISIONS	JMM	ERR

DATE: MAY 25, 2021
SCALE: 1" = 80'
PROJ. NO.: 17-6821
SHEET NO.: C11.0B



A
B
C
D
E
F
G
H
I
J
K
L

DWG NAME: F:\17-6821 - 260 Acre Tract along Hwy 40, O'Fallon, MO\AutoCAD Drawings\PH3 Residential\Construction Drawings\PH3 Residential Plans\25_Sanitary Sewer Plan Overview Phase 3.dwg LAYOUT TAB: SANITARY OVERVIEW PH3B PLOTTED ON: Dec 03, 2021 - 9:44am PLOTTED BY: jmayor

EXISTING MANHOLE
PWS#-12C
TOP ELEV. = 538.75
INV. ELEV. (N) = 530.00
INV. ELEV. (SW) = 529.95

EXISTING MANHOLE
PWS#-12B
TOP ELEV. = 532.98
INV. ELEV. (N) = 524.08
INV. ELEV. (SW) = 521.78

EXISTING MANHOLE
PWS#-12A
TOP ELEV. = 533.41
INV. ELEV. (NW) = 518.71
INV. ELEV. (NE) = 517.61
INV. ELEV. (SE) = 517.51

EXISTING MANHOLE
PWS#-12
TOP ELEV. = 527.73
INV. ELEV. (NW) = 516.48
INV. ELEV. (SE) = 516.38

EXISTING MANHOLE
DUCKETT #T200-11
TOP ELEV. = 526.81
INV. ELEV. (NW) = 514.81
INV. ELEV. (S) = 514.71

EXISTING MANHOLE
DUCKETT #T200-10
TOP ELEV. = 523.12
INV. ELEV. (N) = 513.32
INV. ELEV. (S) = 513.22

EXISTING MANHOLE
DUCKETT #T200-9
TOP ELEV. = 521.95
INV. ELEV. (N) = 511.65
INV. ELEV. (S) = 511.55

10" SANITARY SEWER
(PHASE I)

N/F
ROLLING MEADOWS LTD
4-0036-0297-00-0002.3130000

N/F
CITY OF O'FALLON
4-0068-0297-00-0003.3000000

EF EXTENDED FOUNDATION MAY BE REQUIRED.
(WILL BE DETAILED ON PLOT PLAN.)

STRUCTURE #118 & 154 NOT USED.

DUCKETT CREEK SANITARY DISTRICT (DCSD) NOTES:
1. EXISTING SANITARY SEWER SERVICE SHALL NOT BE INTERRUPTED.
2. CONSTRUCTION OF SANITARY SEWERS REQUIRES DCSD INSPECTION. CONTACT DCSD INSPECTION DEPARTMENT AT 636-441-1244 TO SCHEDULE INSPECTION. 48 HOUR ADVANCE NOTICE IS REQUIRED.

OWNER/DEVELOPER:
DD LAND DEVELOPMENT, LLC
10407 BAUR BLVD, SUITE B
ST. LOUIS, MO 63132