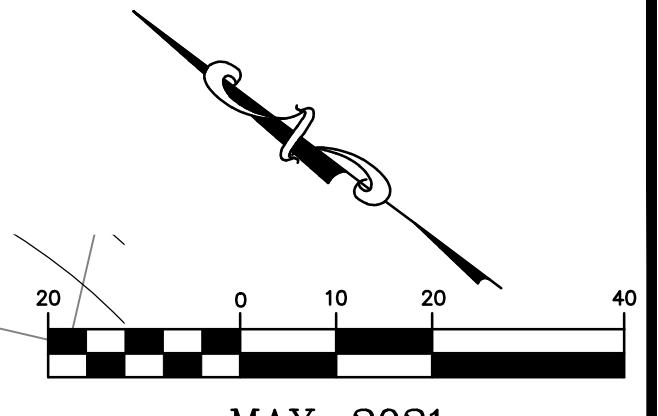
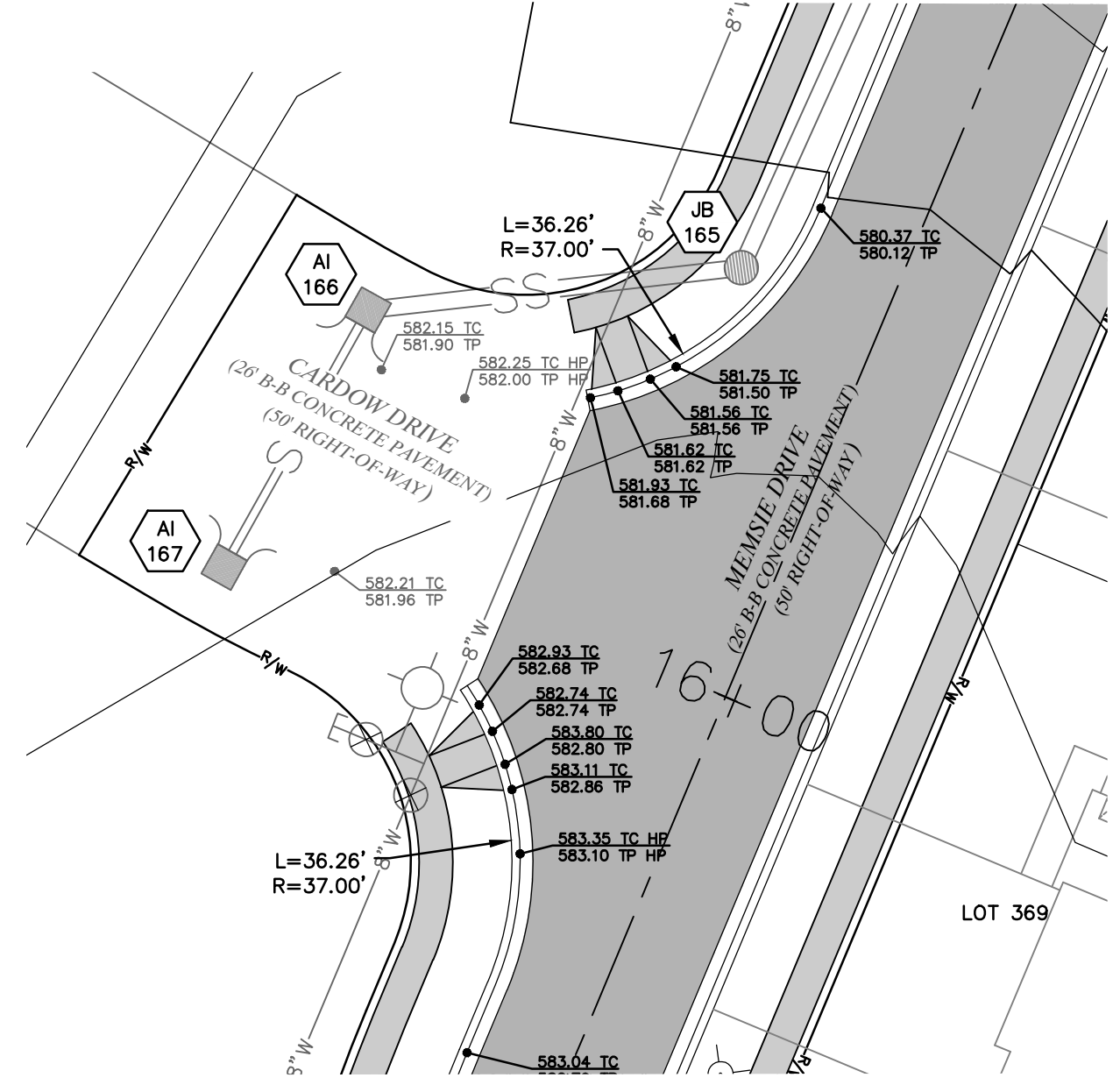


WARPING DETAILS - PHASE 3

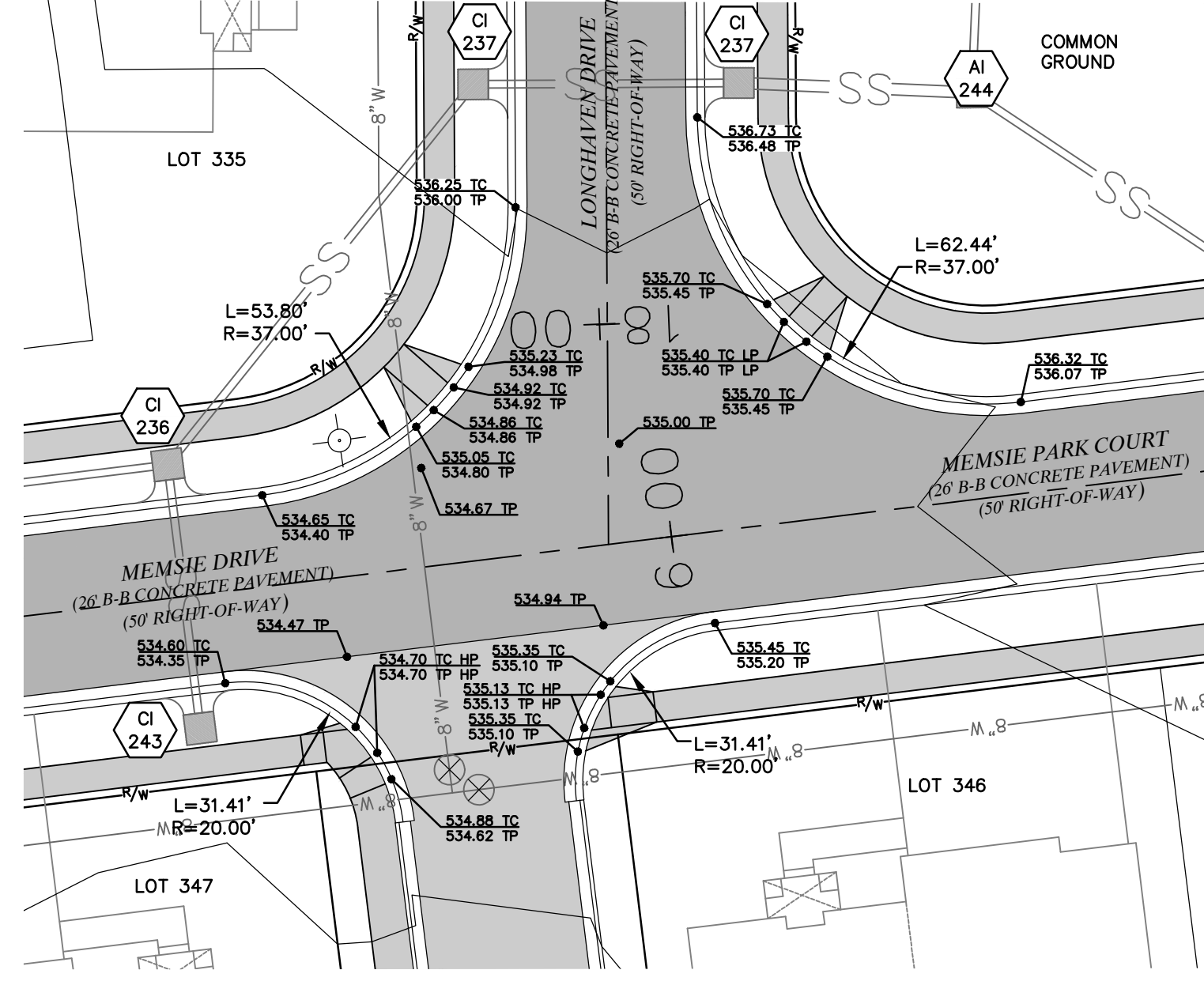


MAY, 2021

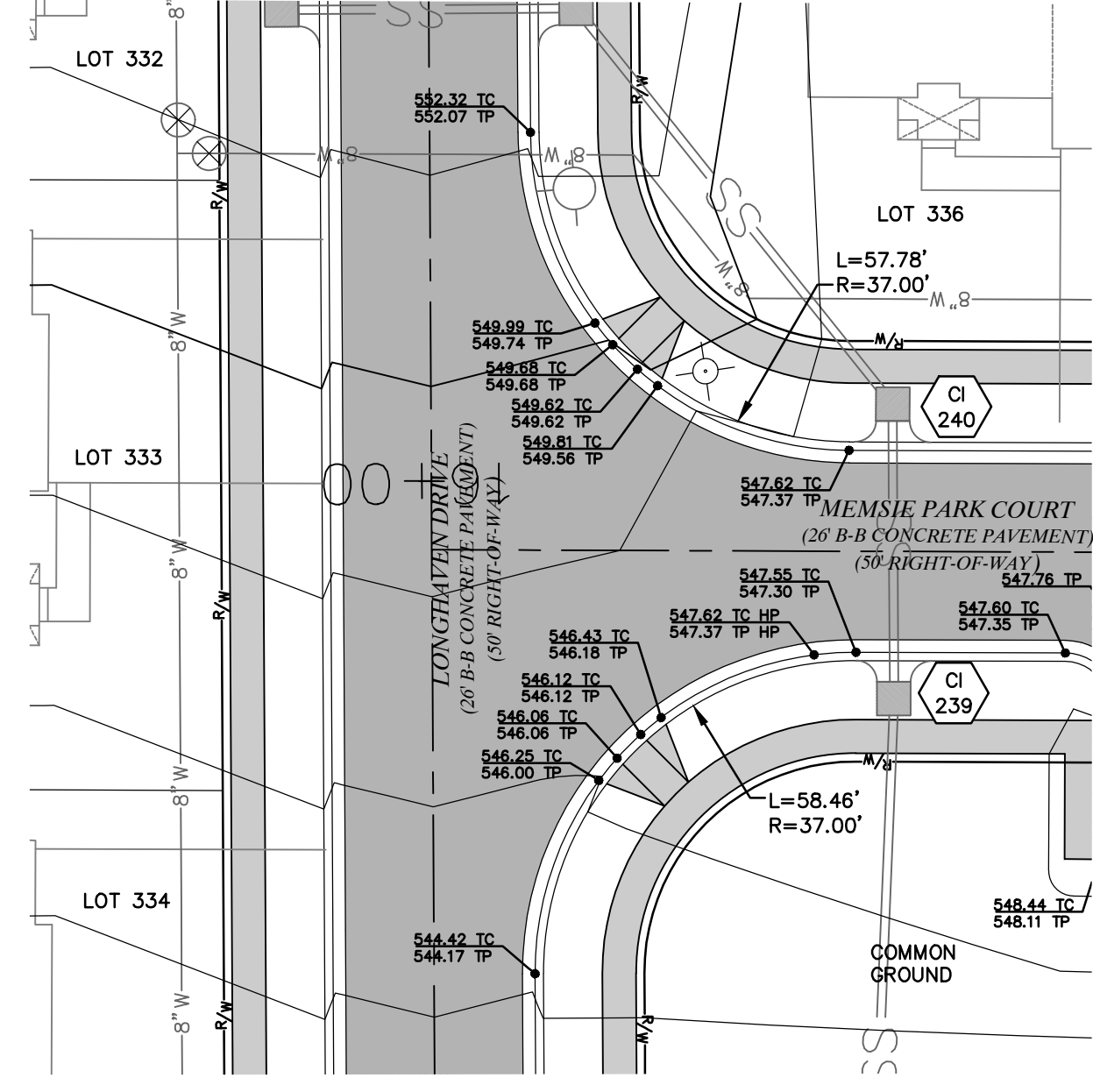
ALL ROUNDINGS AND CUL-DE-SACS SHALL BE CONSTRUCTED WITH THE PROPER SLOPE TO PREVENT STORM WATER PONDING.



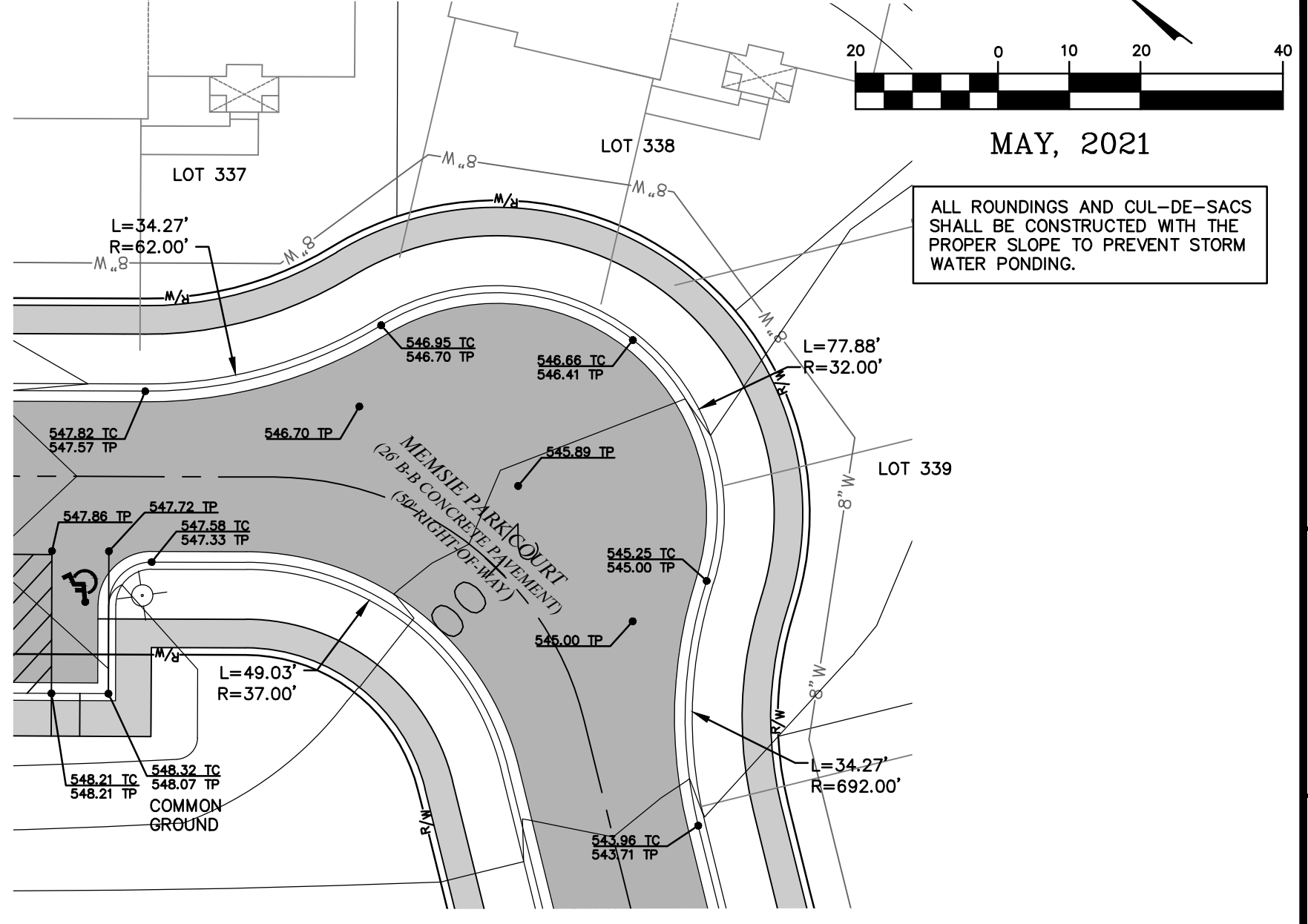
**CARDOWN DRIVE AT MEMSIE DRIVE
WARPING DETAIL**



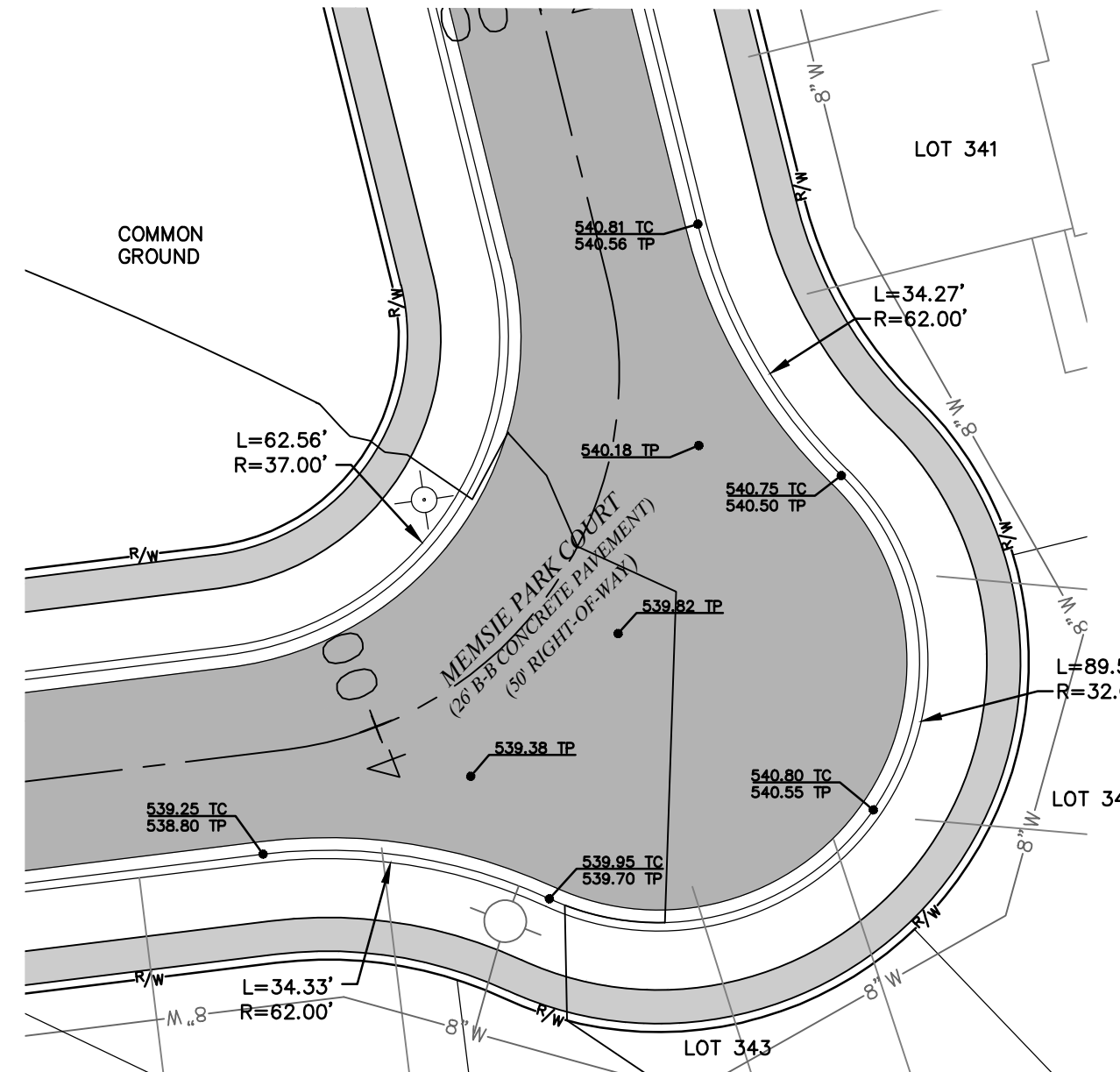
**LONGHAVEN DRIVE AT MEMSIE DRIVE & MEMSIE
PARK COURT WARPING DETAIL**



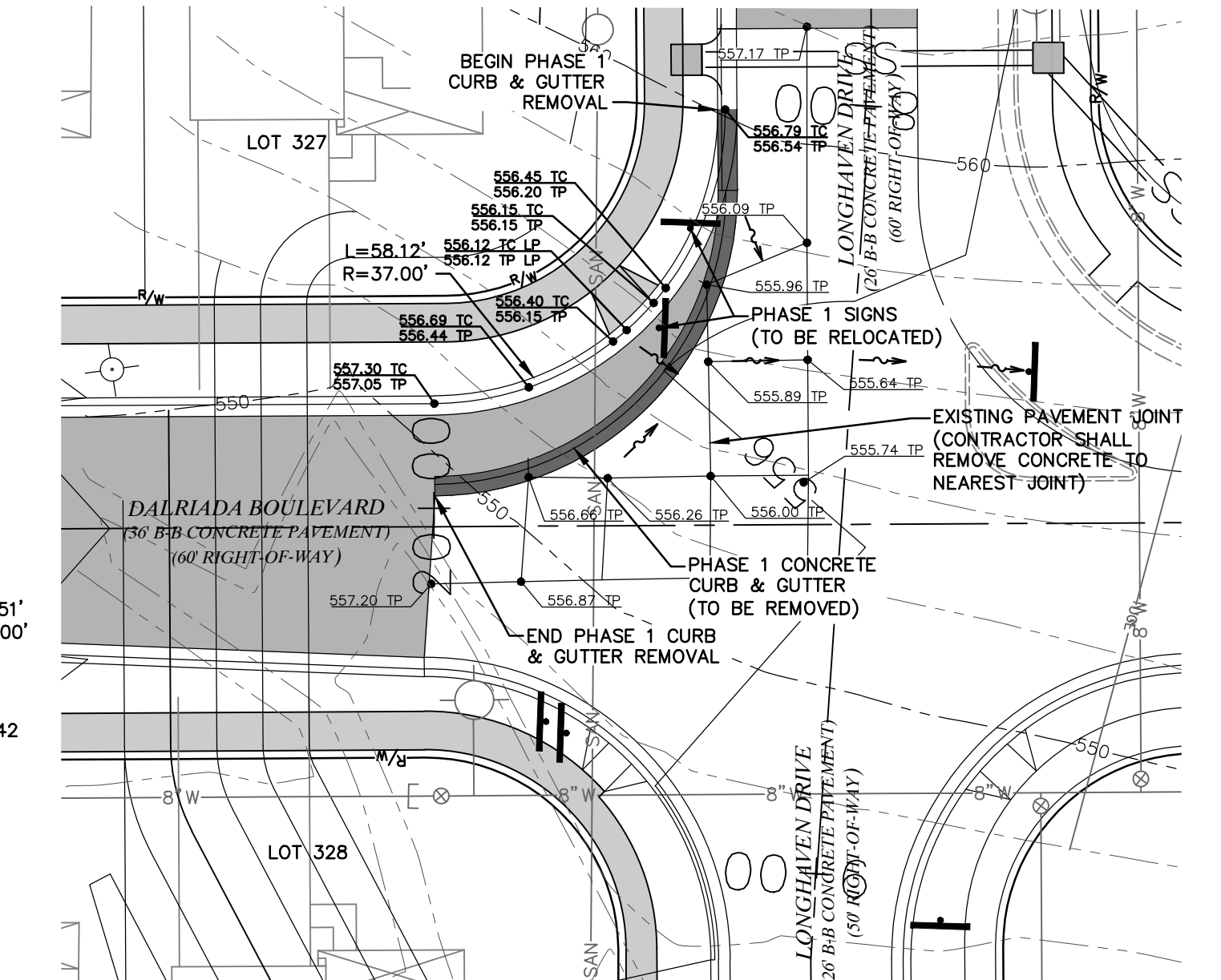
**MEMSIE PARK COURT AT LONGHAVEN DRIVE
WARPING DETAIL**



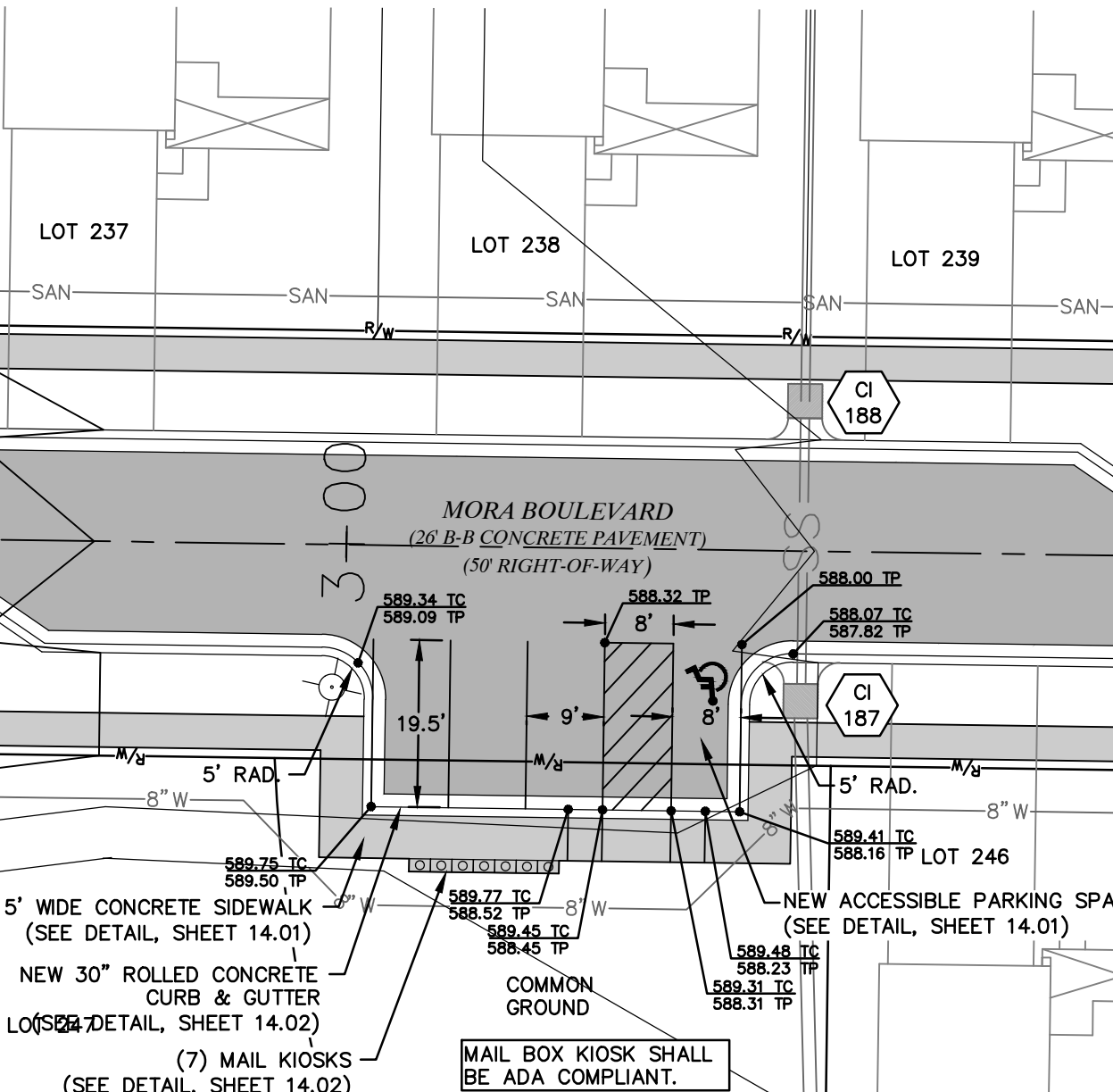
**MEMSIE PARK COURT CUL-DE-SAC #1
WARPING DETAIL**



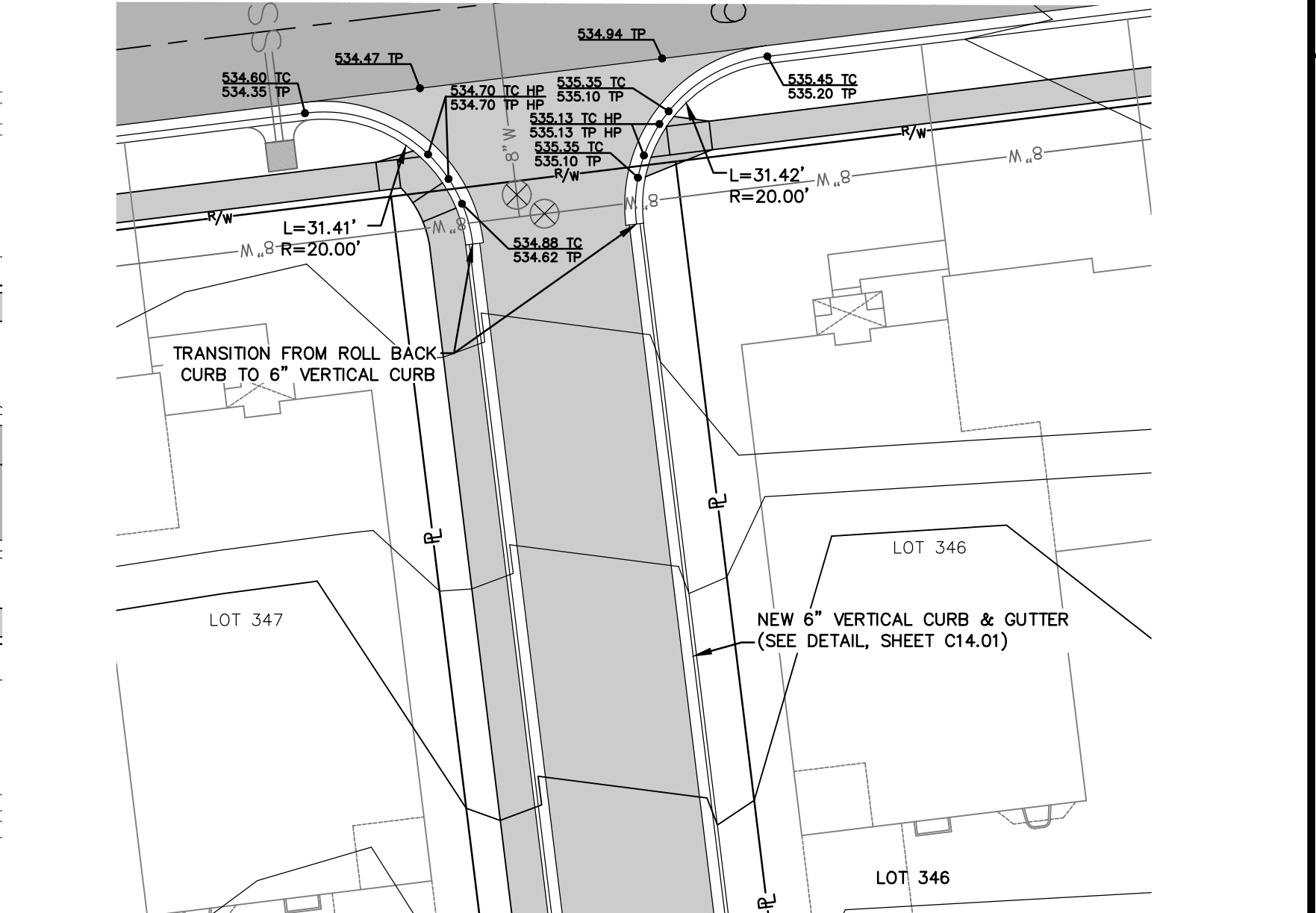
**MEMSIE PARK COURT CUL-DE-SAC #2
WARPING DETAIL**



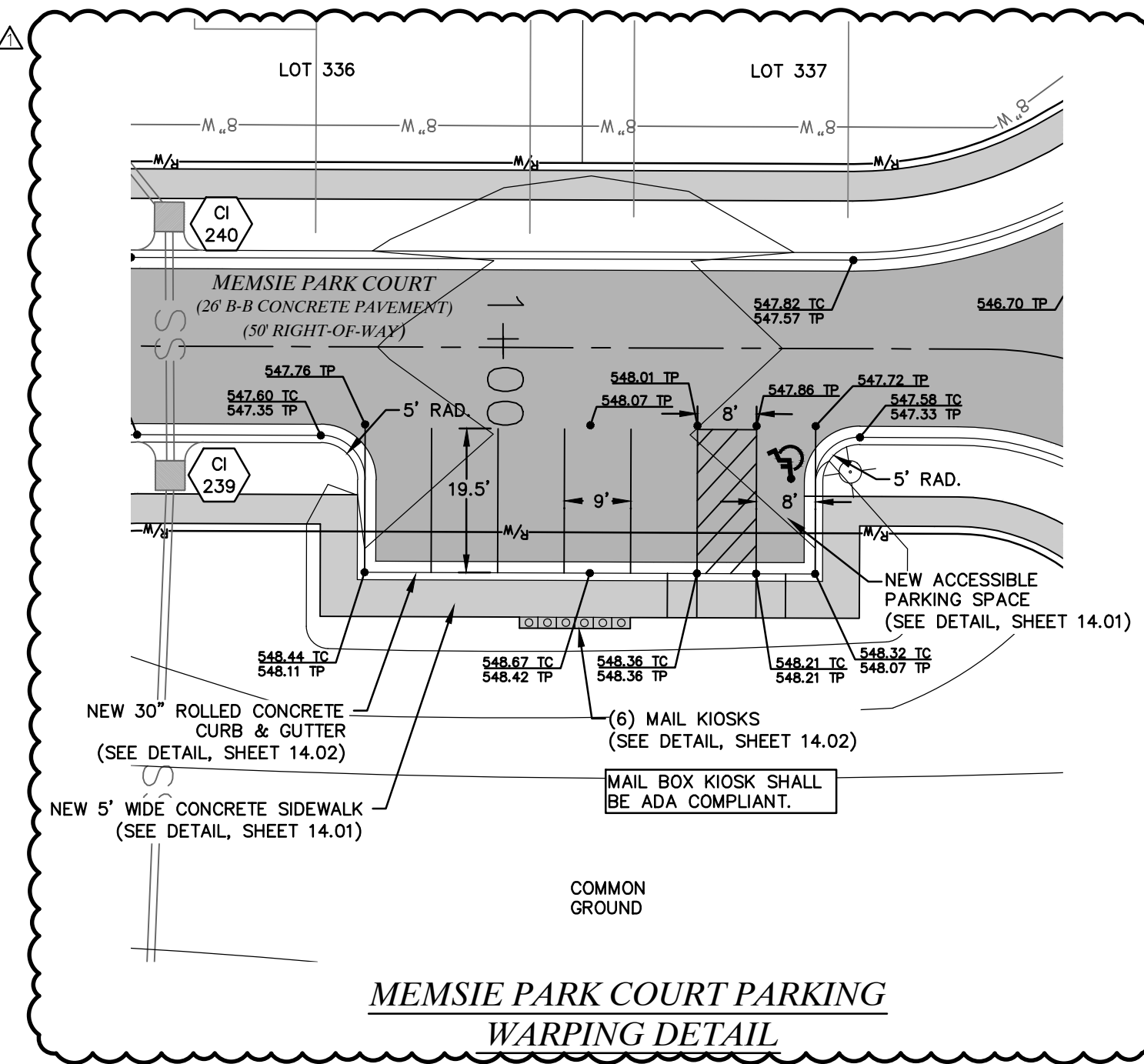
**DALRIADA BOULEVARD AT LONGHAVEN DRIVE
WARPING DETAIL**



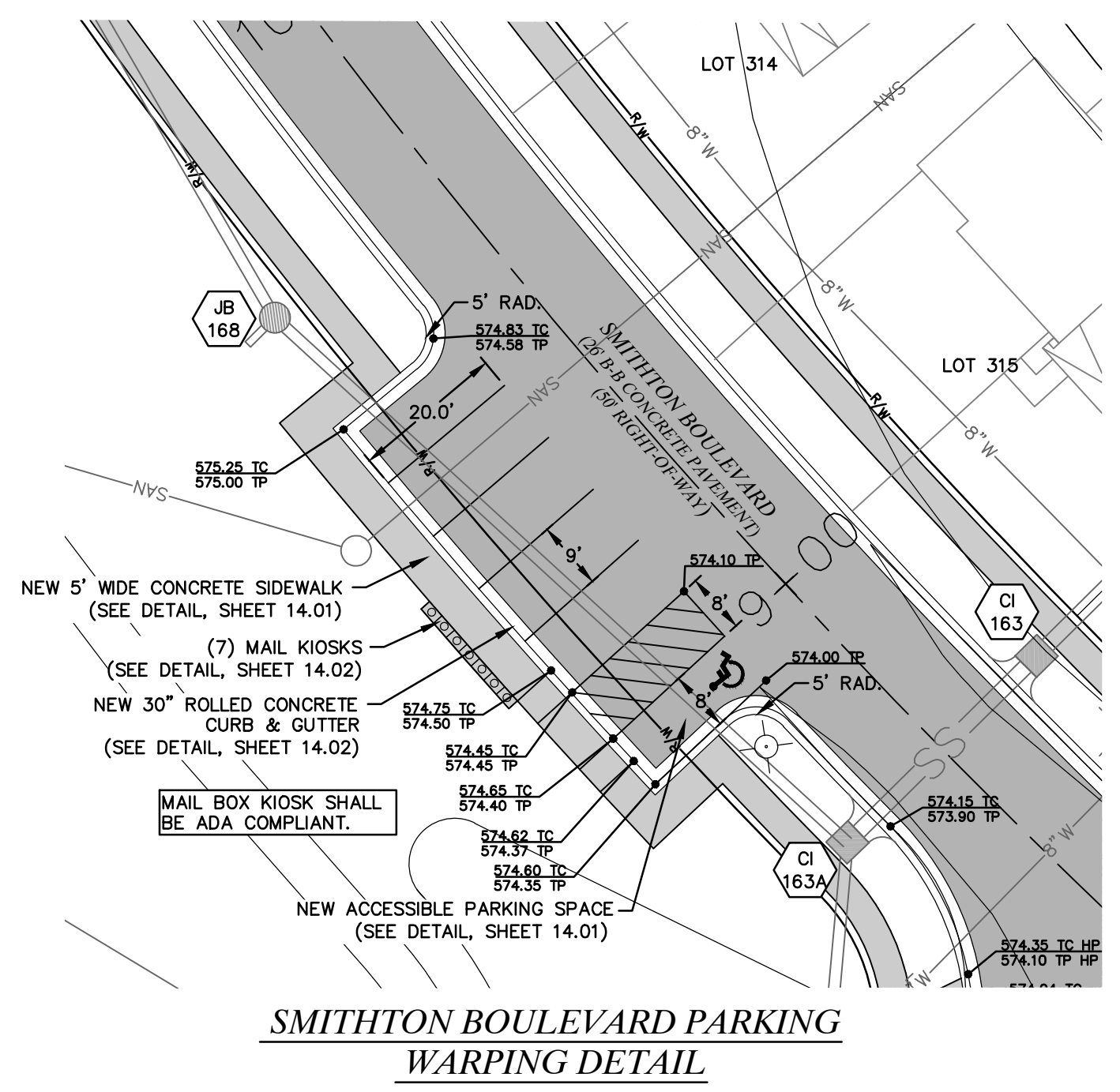
**MORA BOULEVARD PARKING
WARPING DETAIL**



**O'DAY PARK PARKING LOT
WARPING DETAIL**



**MEMSIE PARK COURT PARKING
WARPING DETAIL**



**SMITHTON BOULEVARD PARKING
WARPING DETAIL**

636-594-0540 (tel.)
636-594-0512 (fax)
mail@ochran.com

CHORAN
Civil Engineering
Land Surveying
Architecture
Site Development
General Consulting
Master Planning

Missouri State Certificate of Authority Numbers:
Survey: 000380
Engineering: 016555
Architecture: 200214240

Three working days prior to the start of any excavation, call 1-800-TIG-RTTE for utility location information.

All OSHA rules & regulations construction required by these plans shall be strictly followed (i.e. trenching, blasting, etc.)

STATE OF MISSOURI
ELIOTT R. REEB
Professional Engineer
NUMBER
PE-2006002845

THE STREETS OF CALEDONIA
PHASE 3 RESIDENTIAL
O'FALLON, MISSOURI

WARPING DETAILS - PHASE 3

DATE	REVISION	APPROVED BY	ERR
06-29-21	REVIEW COMMENTS	JMM	ERR
MAY 25, 2021		JMM	ERR

SCALE: 1" = 20'
17-6821
OWNER/DEVELOPER:
DD LAND DEVELOPMENT, LLC
10407 BAUR BLVD. SUITE B
ST. LOUIS, MO 63132

C13.01