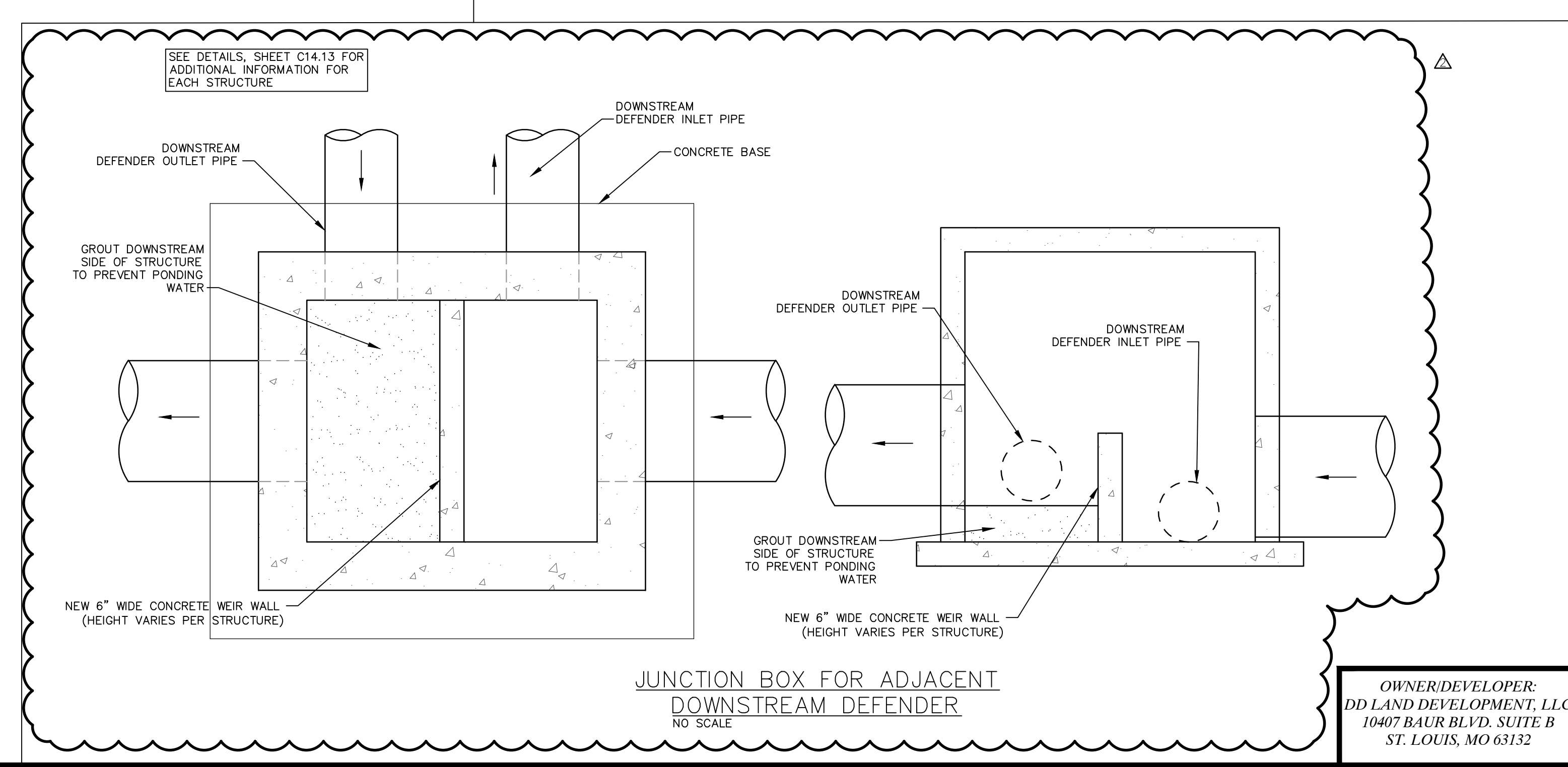
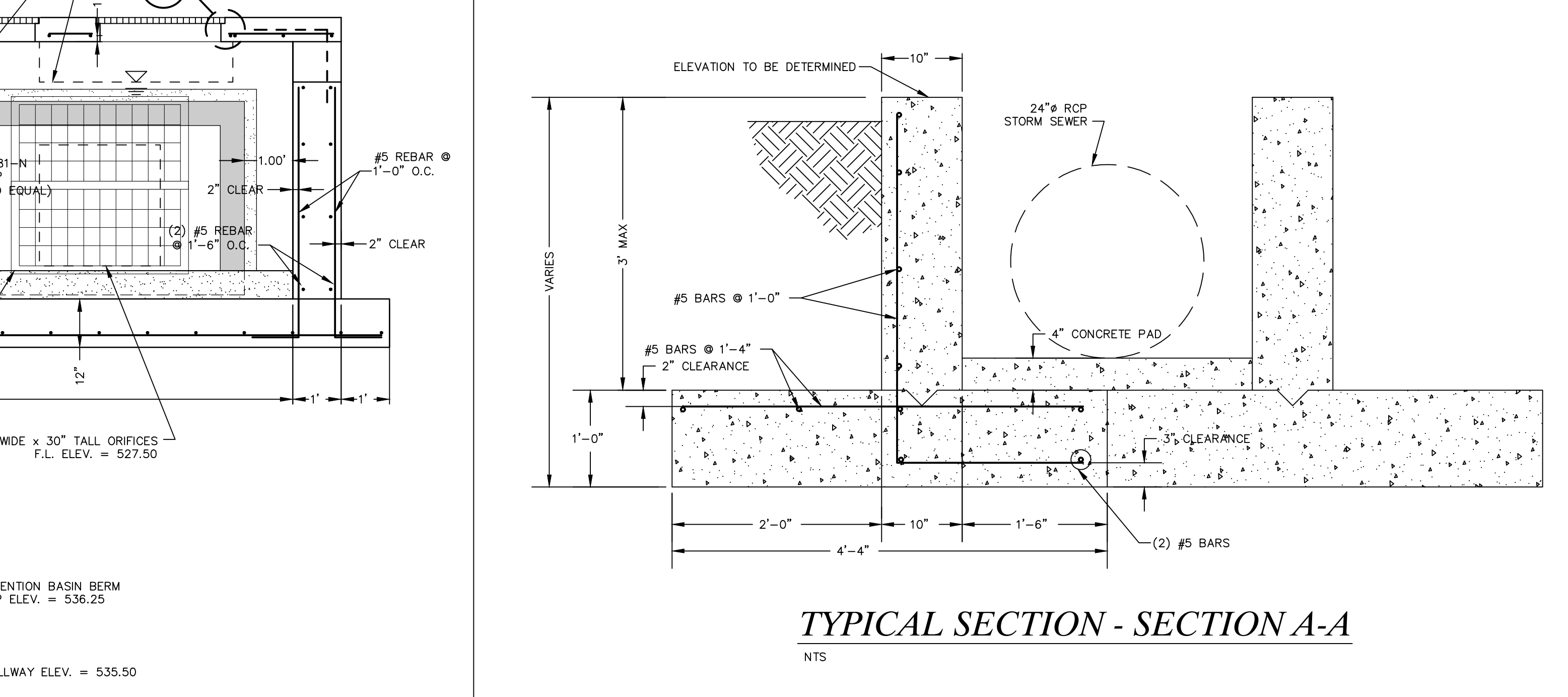
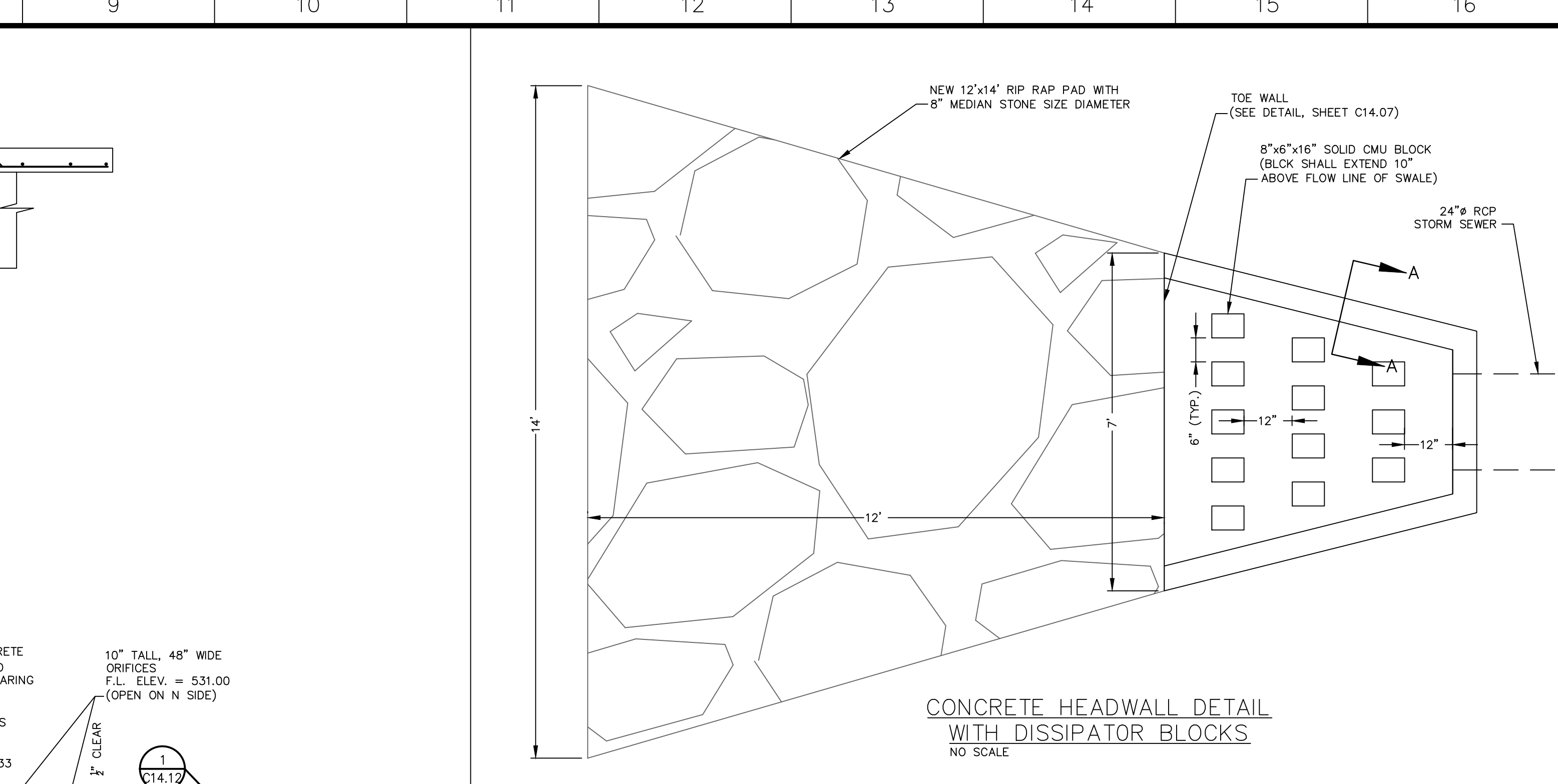
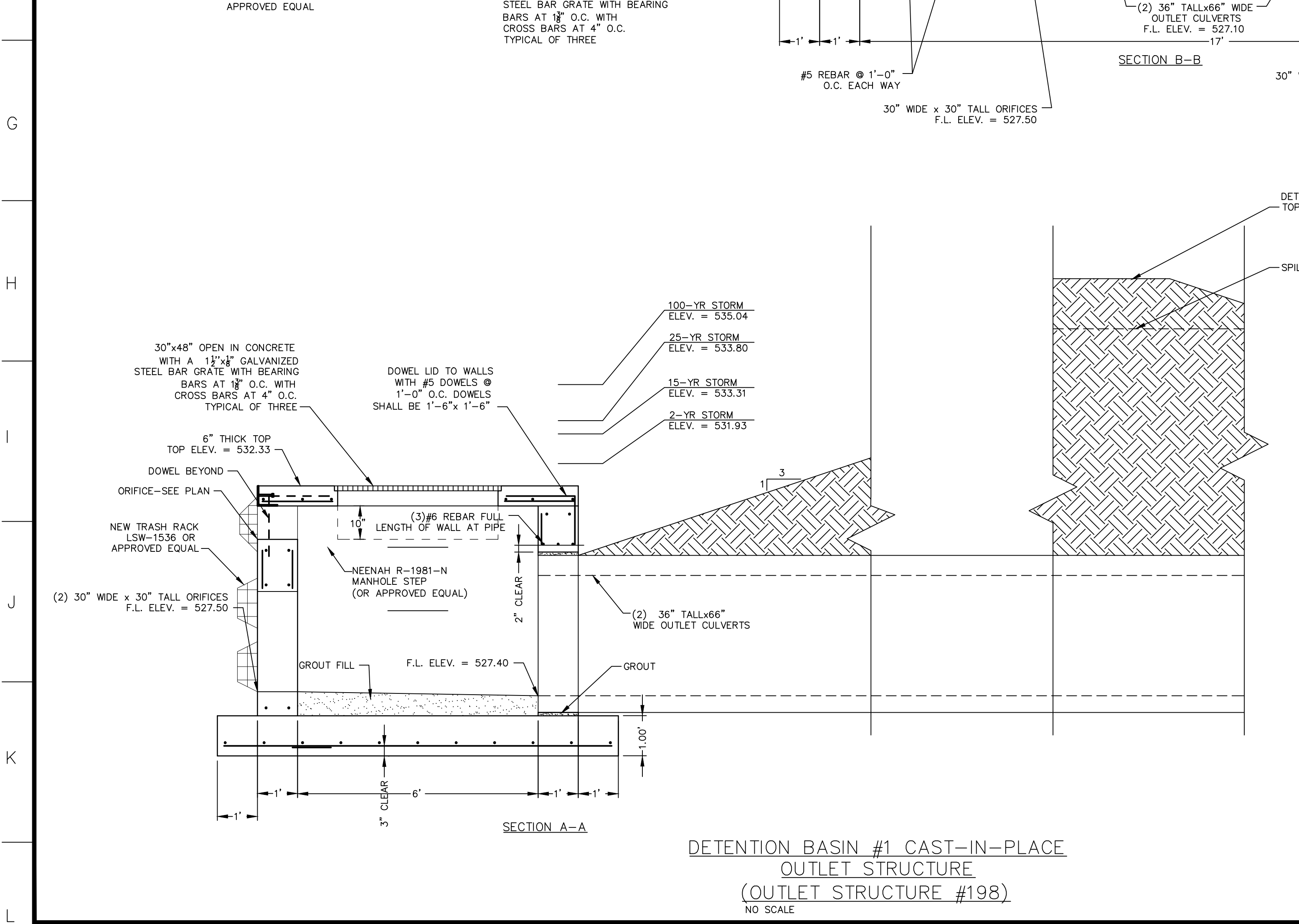
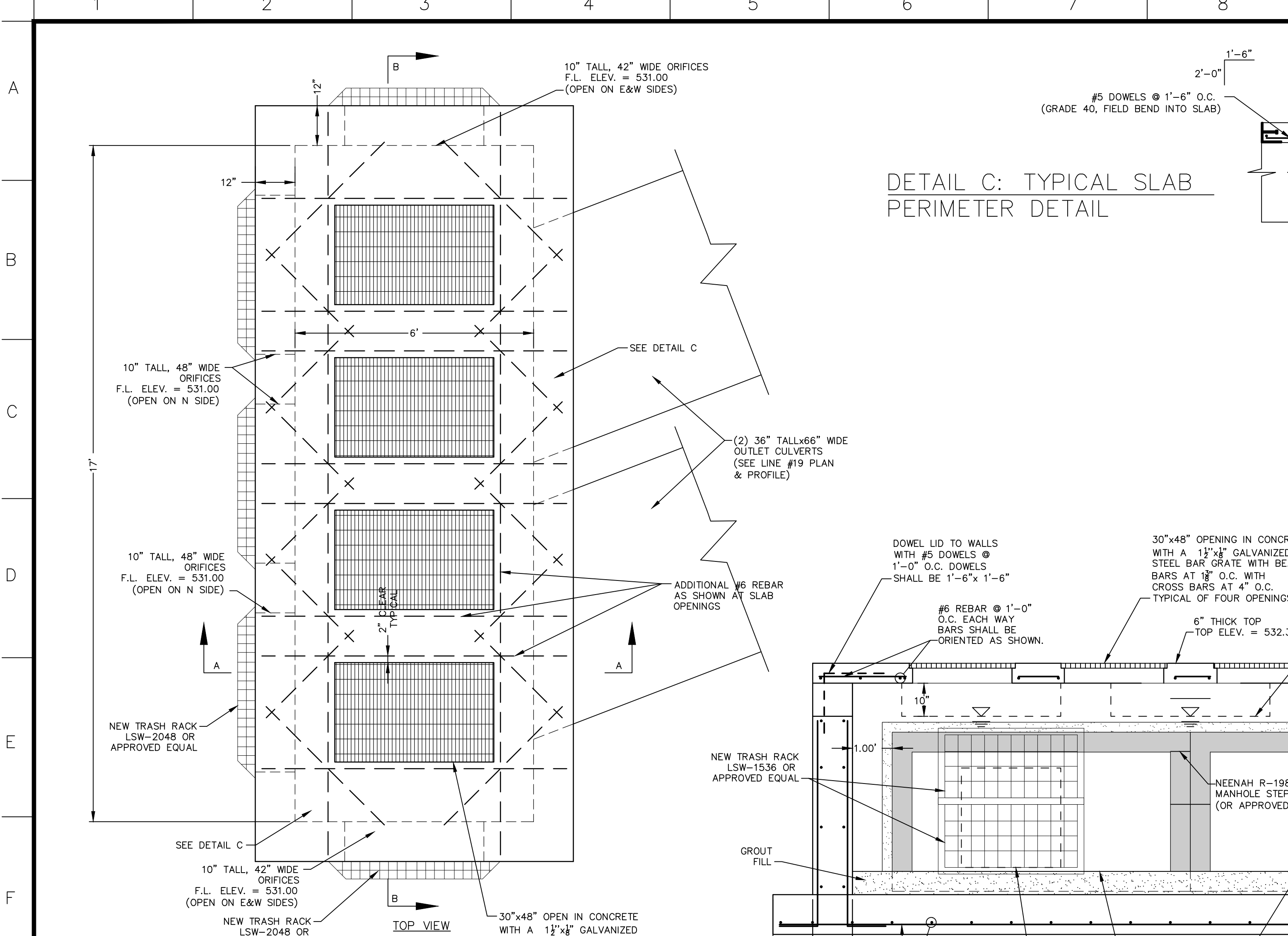


Drawing name: E:\17-6821 - 860 Acre Tract along Hwy 40, O'Fallon, MO\AutoCAD Drawings\6821 - Plan Sheets\Construction Drawings\PH3 Residential Plans\45_Detail Sheet - Phase 3.dwg
 Plotted on: Jul 20, 2021 - 1:06pm
 Plotted by: ishowe



MOHRAN
 Civil Engineering
 Land Surveying
 Architecture
 Site Development
 General Consulting
 Master Planning

Missouri State Certificate of Authority Numbers:
 Survey: 000380
 Engineering: 001655
 Architecture: 2002014240

THE STATE OF MISSOURI
 ELLIOTT
 REBE
 PROFESSIONAL ENGINEER
 NUMBER
 PE-2006002845

THE STREETS OF CALEDONIA
PHASE 3 RESIDENTIAL
O'FALLON, MISSOURI

DATE	BY	APP'D BY	REVISION
06-29-21	JMM	JMM	ERR
07-20-21	JMM	JMM	ERR

DATE: 06-29-21
 DATE: 07-20-21
 JMM
 JMM
 ERR
 ERR
 MAY 25, 2021
 NO SCALE
 PROJ NO: 17-6821
 DWG NO:

C14.05

OWNER/DEVELOPER:
 DD LAND DEVELOPMENT, LLC
 10407 BAUR BLVD, SUITE B
 ST. LOUIS, MO 63132