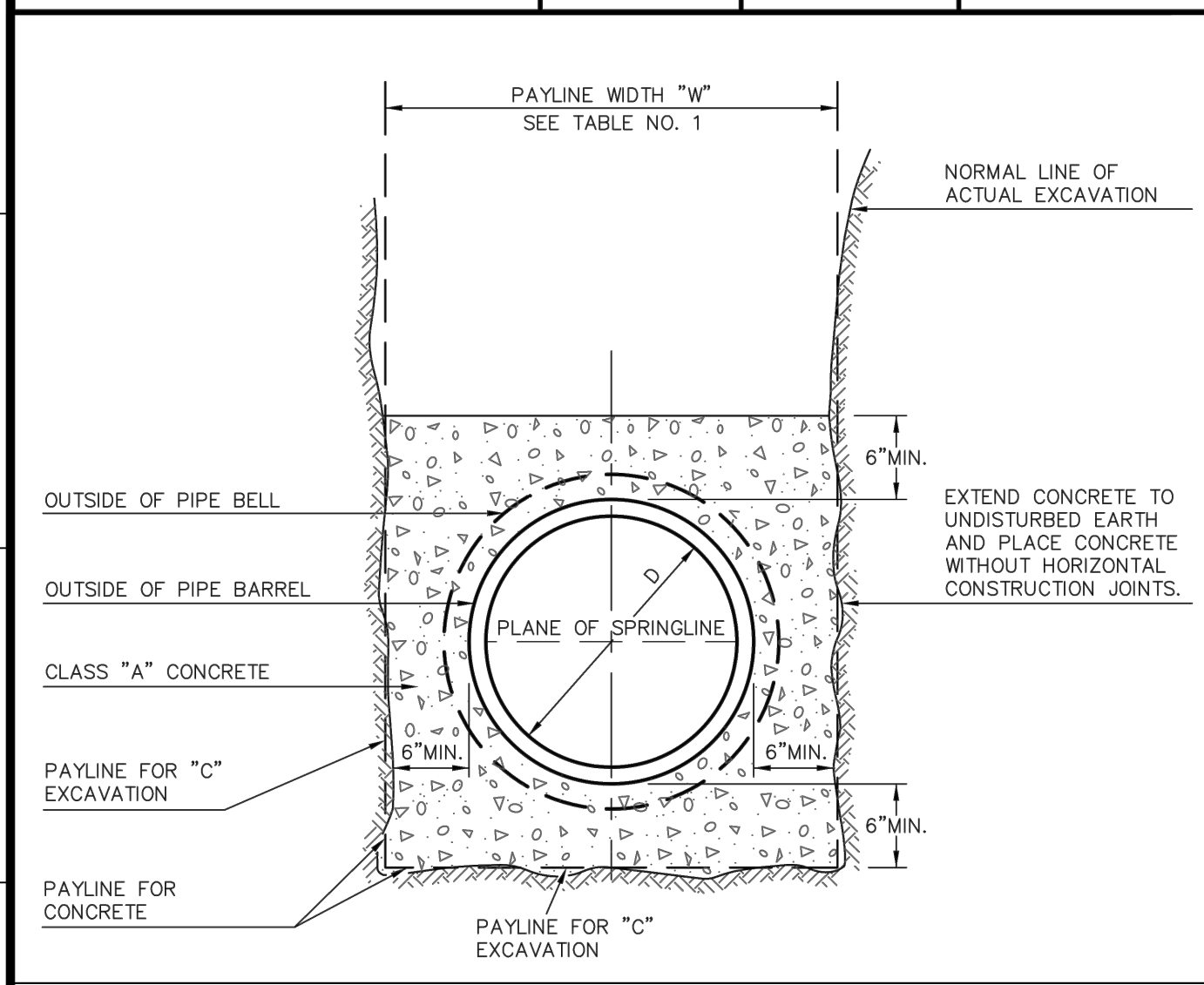


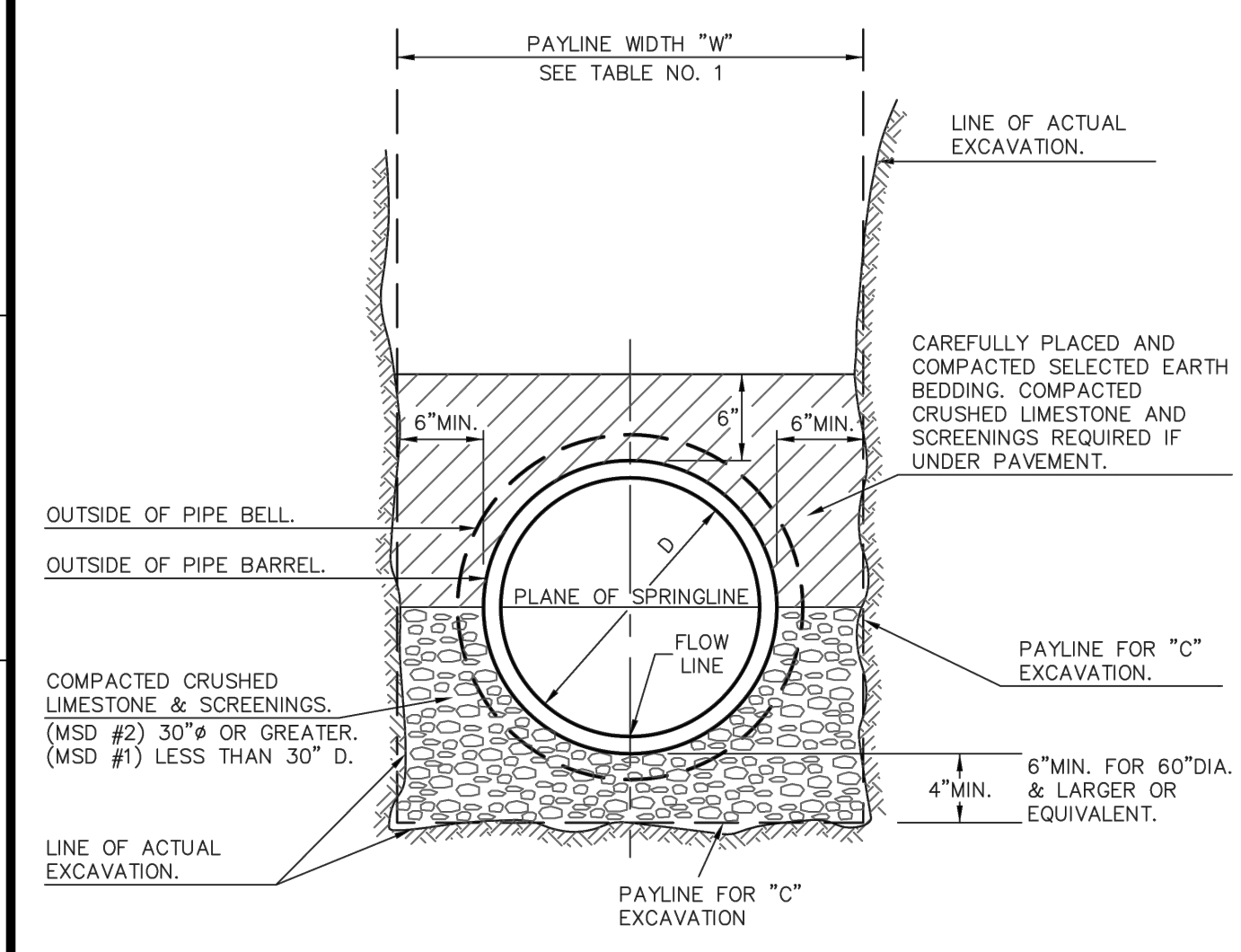
CONCRETE CRADLE

METROPOLITAN ST. LOUIS SEWER DISTRICT Standard Details of Sewer Construction			
Dr. WSH/SAM Ch. J.C.K.	2009	SHEET 9	



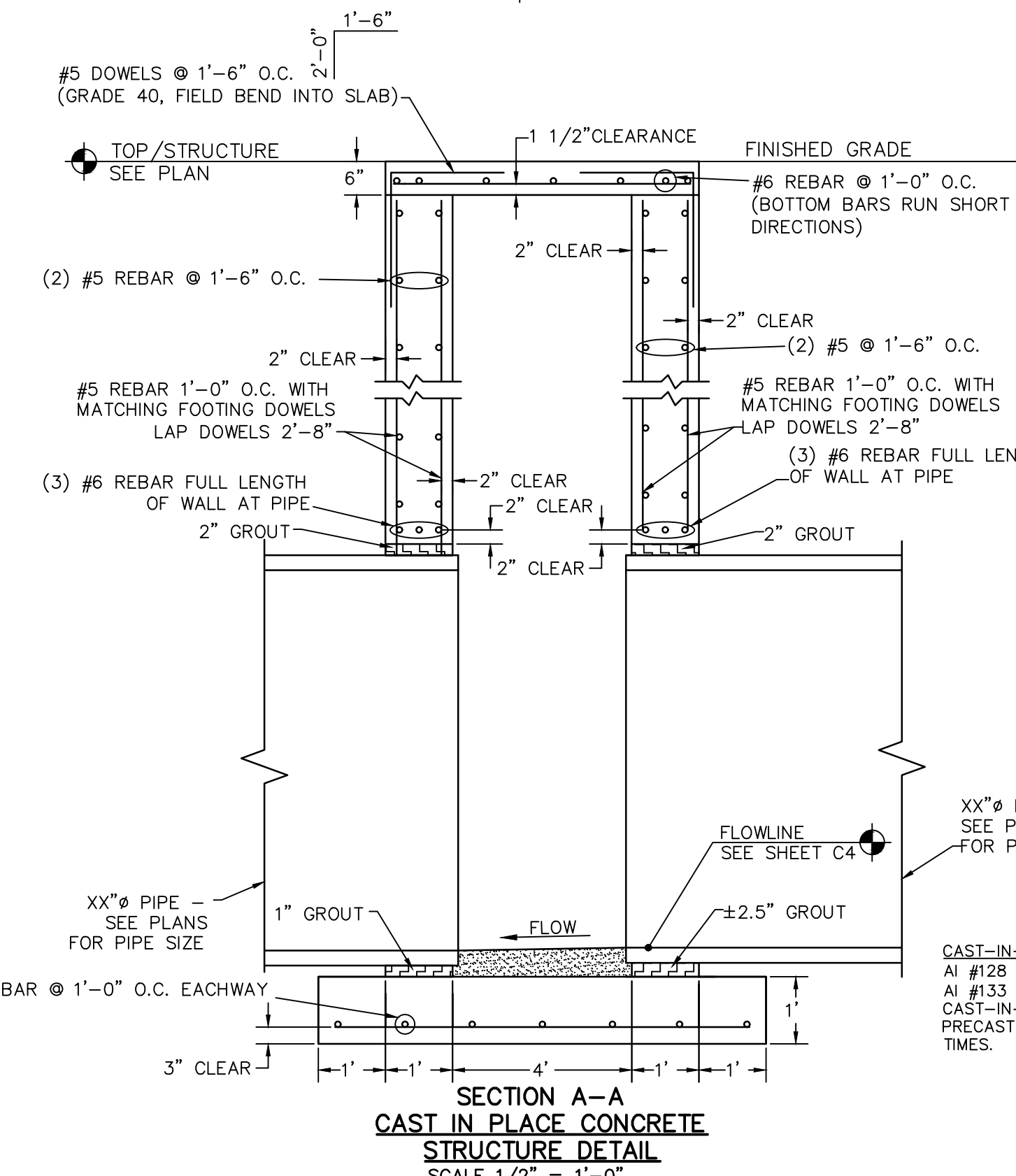
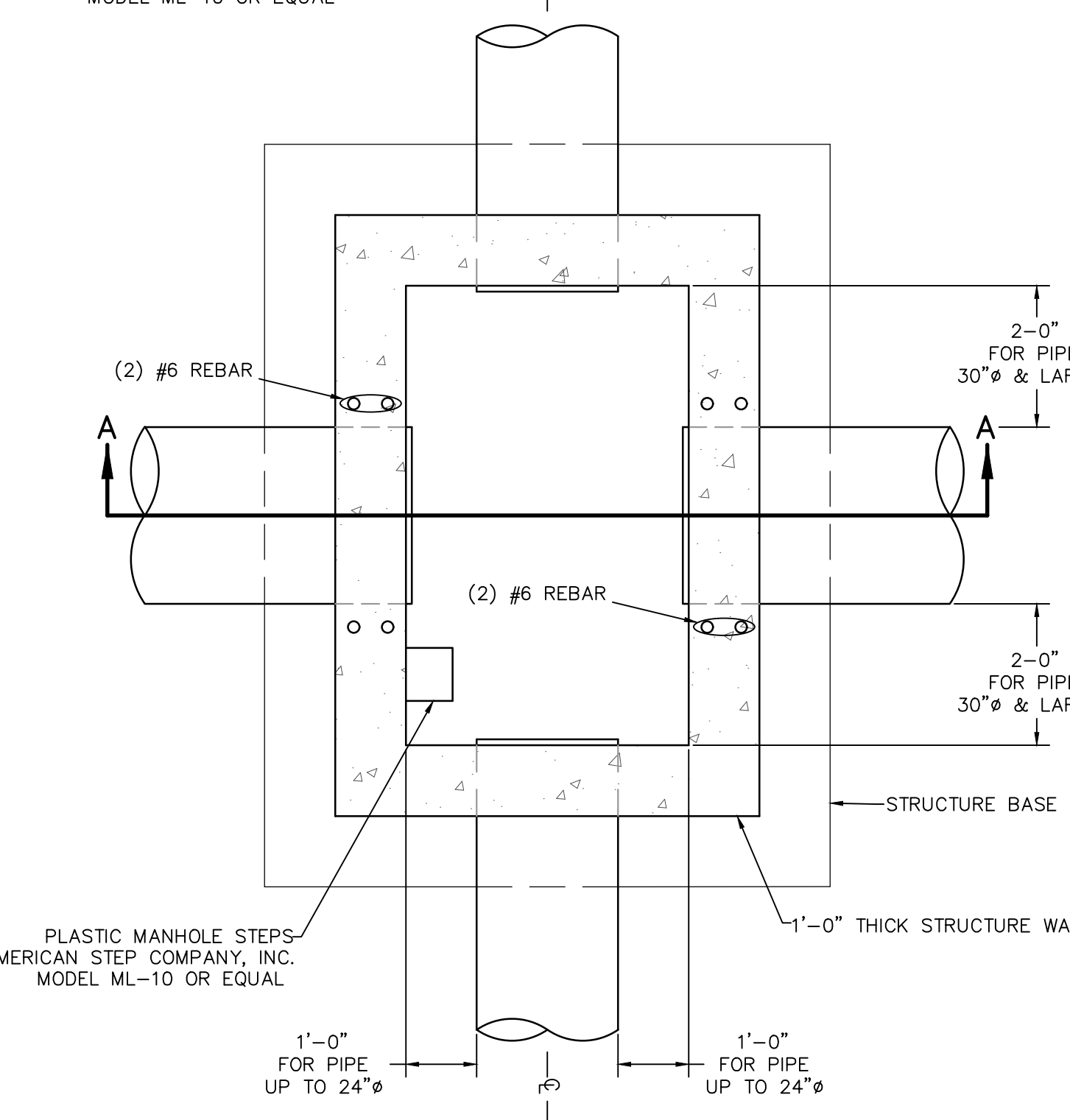
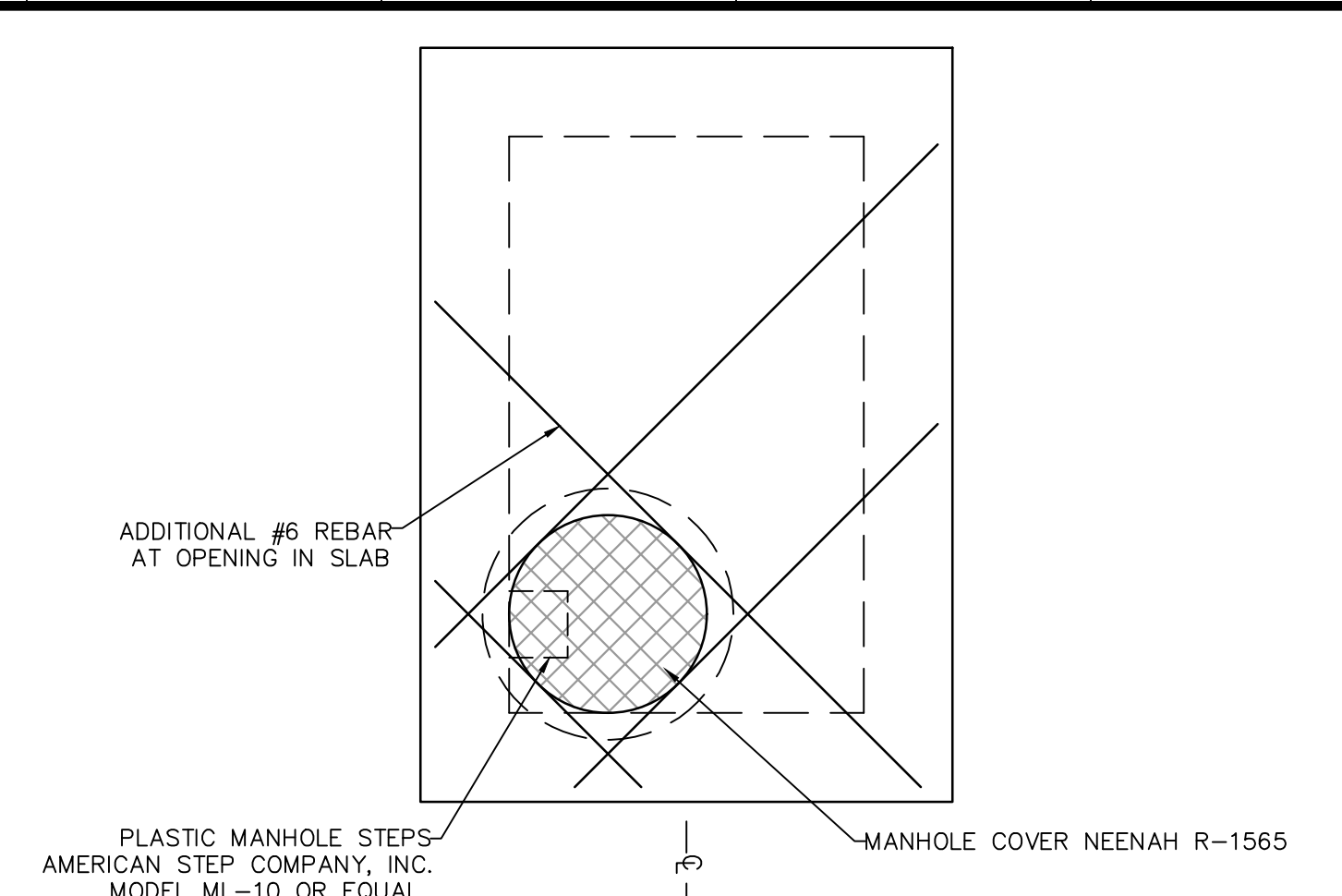
CONCRETE ENCASEMENT

METROPOLITAN ST. LOUIS SEWER DISTRICT Standard Details of Sewer Construction			
Dr. W.S.H. Ch. J.C.K.	2009	SHEET 8	

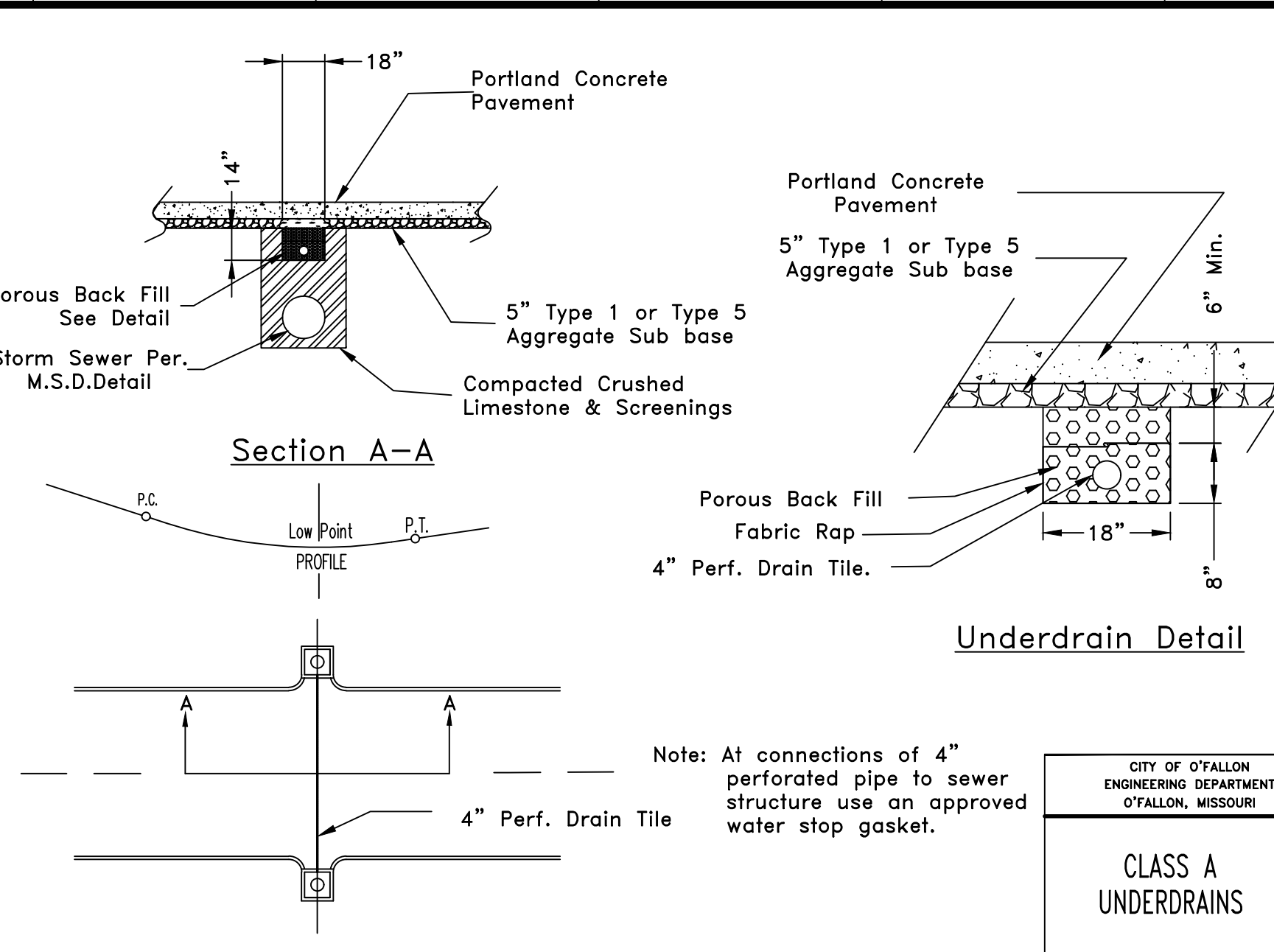


PIPE BEDDING CLASS "C" (MODIFIED FOR REINFORCED CONCRETE PIPE)

METROPOLITAN ST. LOUIS SEWER DISTRICT Standard Details of Sewer Construction			
Dr. W.S.H. Ch. J.C.K.	2009	SHEET 5	



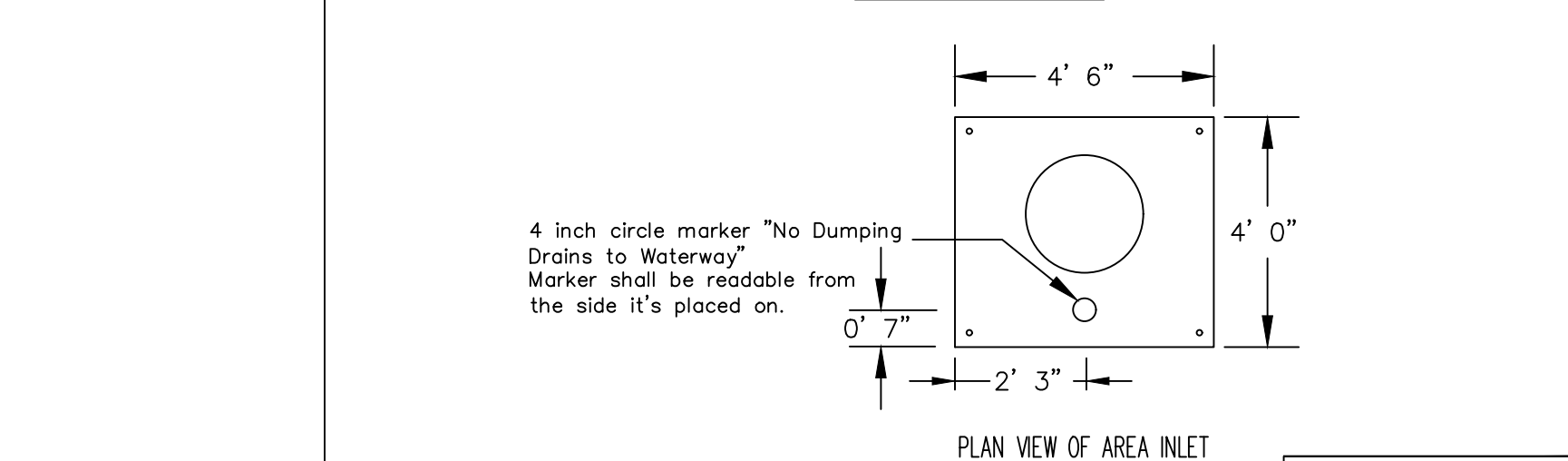
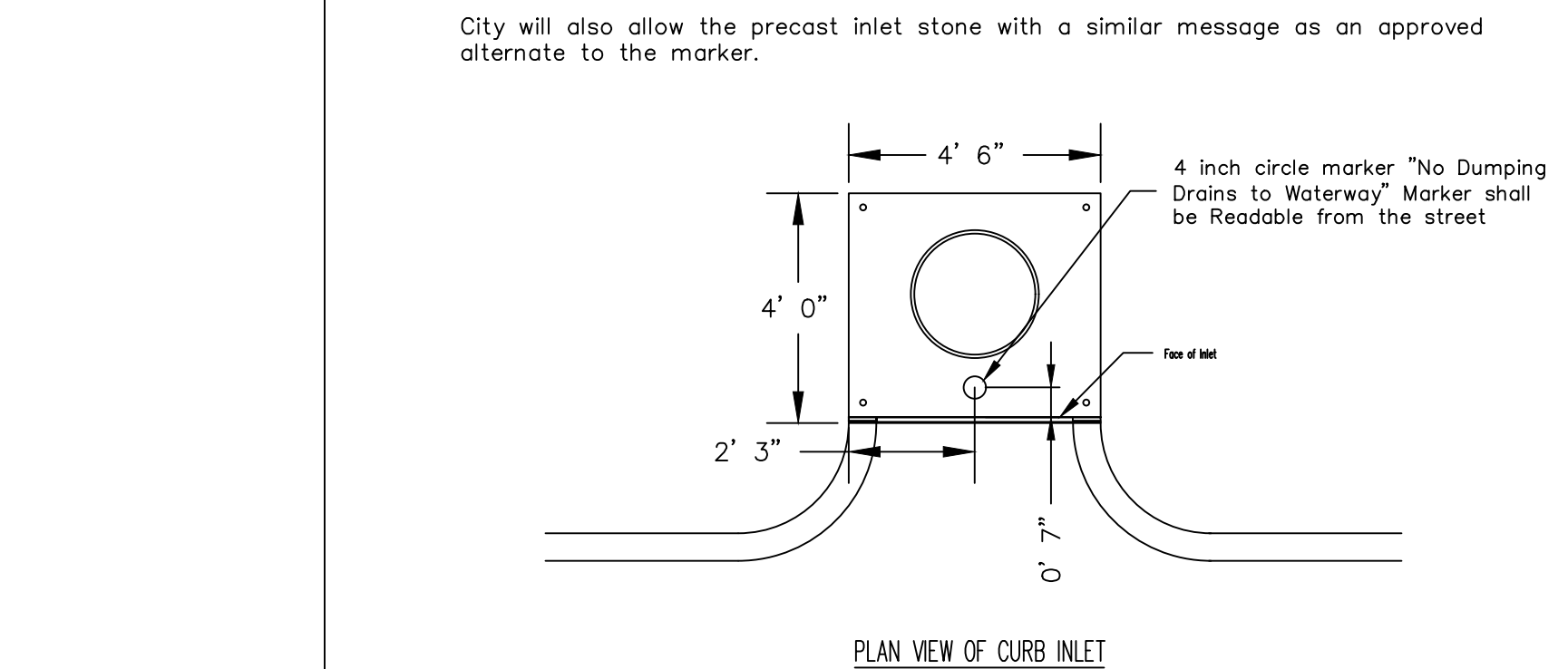
\* All other Storm or Sanitary Sewer Details will be by M.S.D. Standards and Specifications.  
 \*\* All inlets shall have 5/8" trash bar centered with the opening(s).



CLASS A UNDERDRAINS

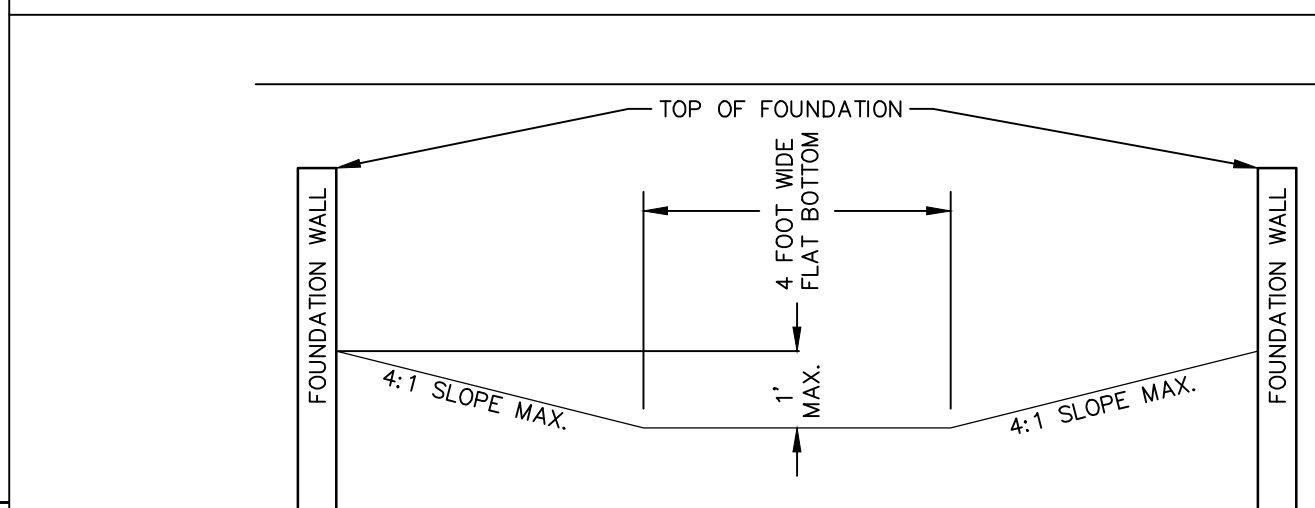
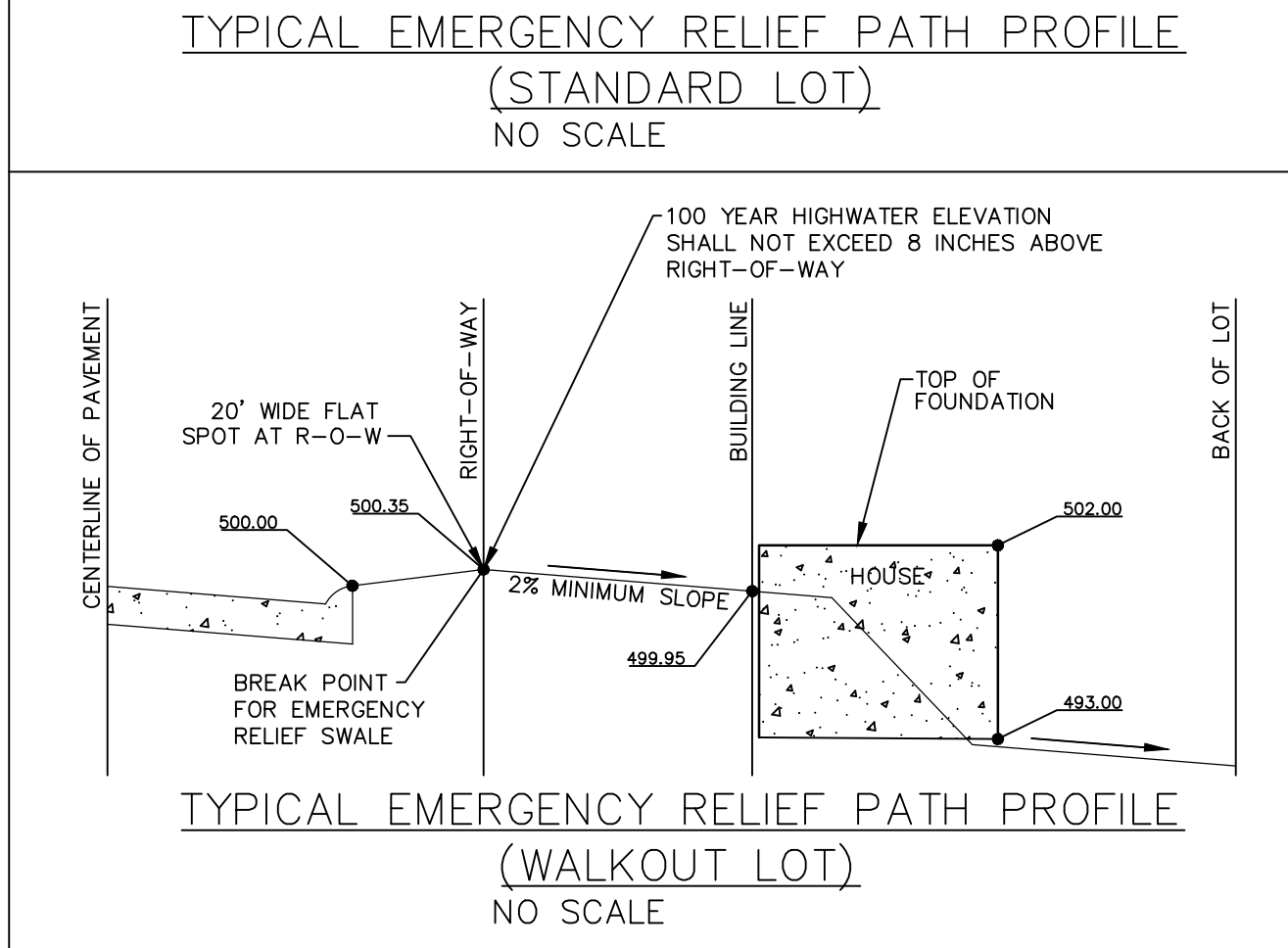
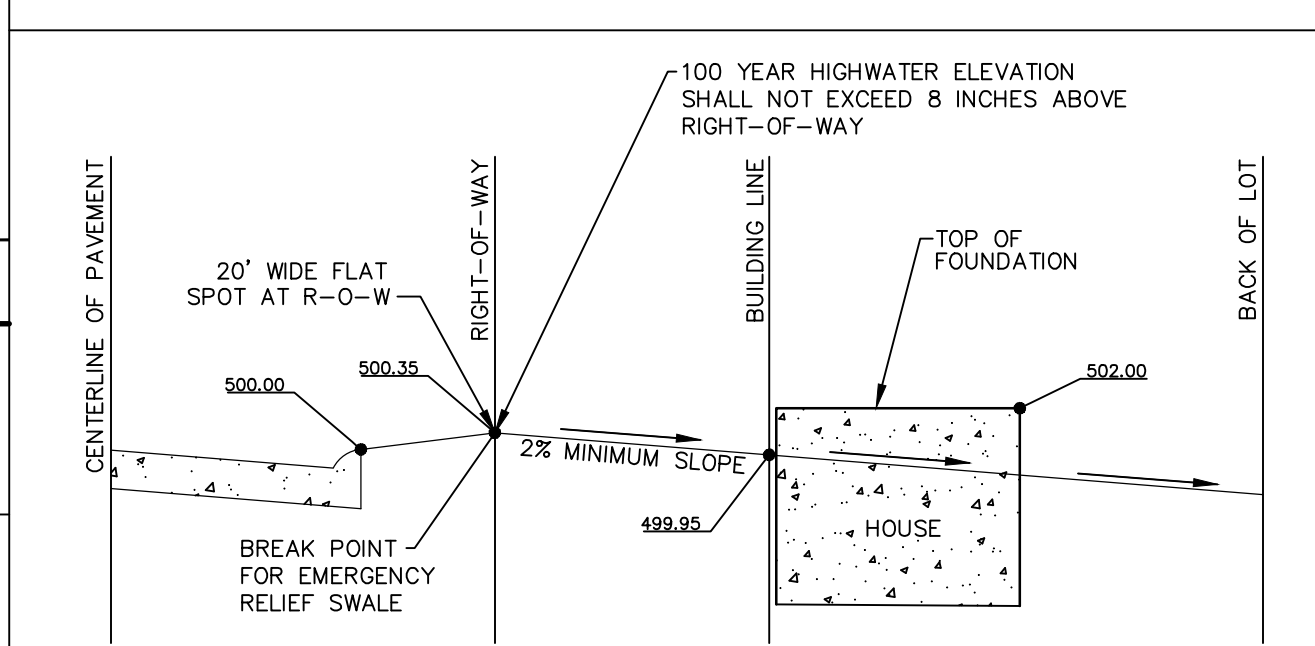
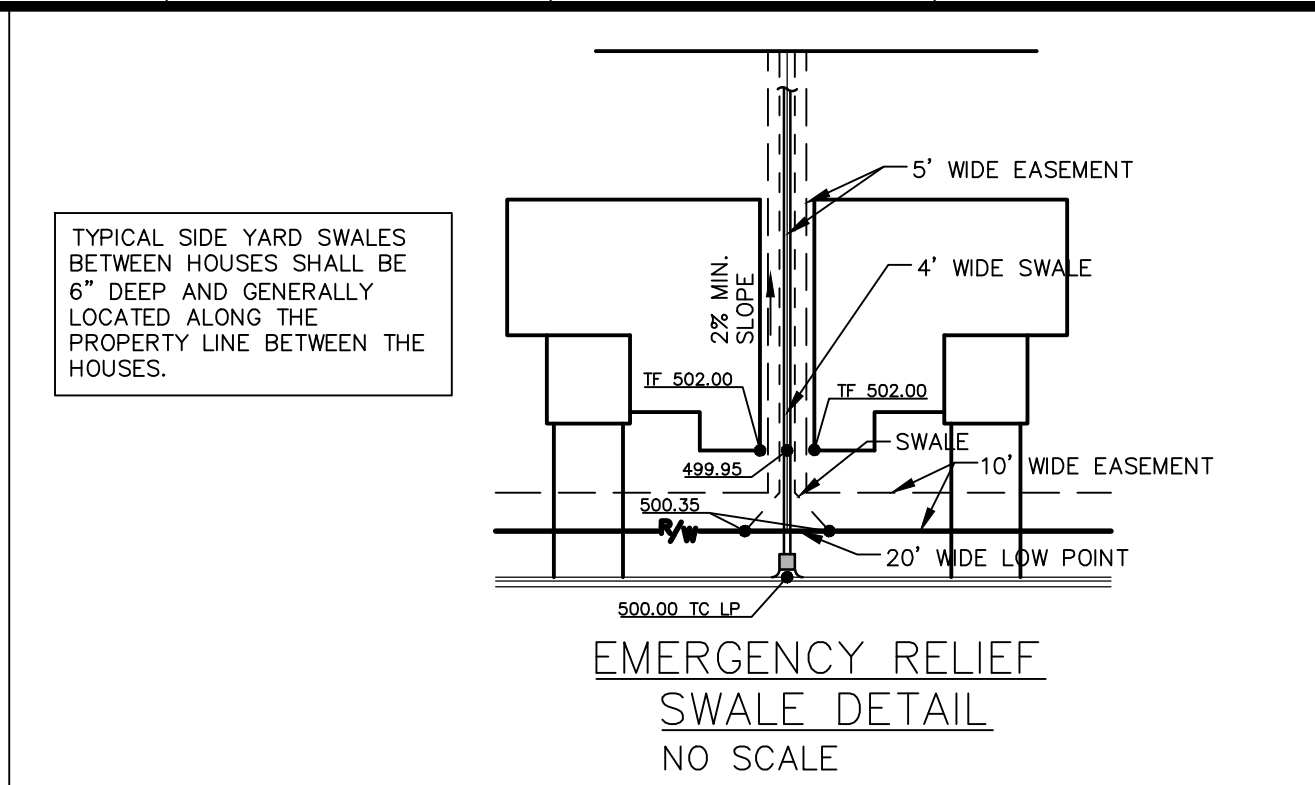
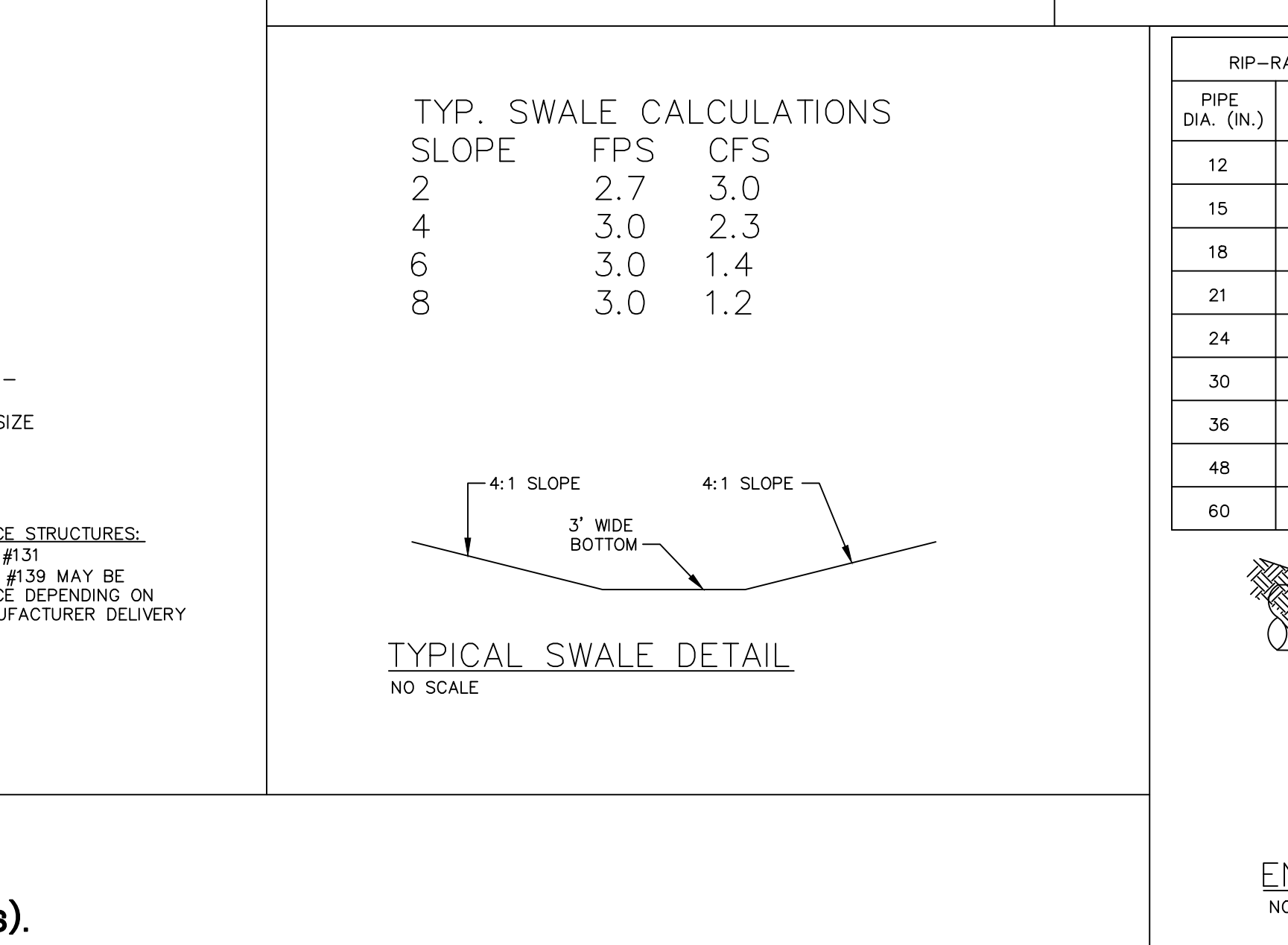
Size	Style	Adhesive	Message (Part #)
3 7/8" TO 4"	Crystal Cap or Standard Style	Epoxy	No Dumping Drains to Waterway

CITY OF O'FALLON ENGINEERING DEPARTMENT O'FALLON, MISSOURI



Public or Private inlets

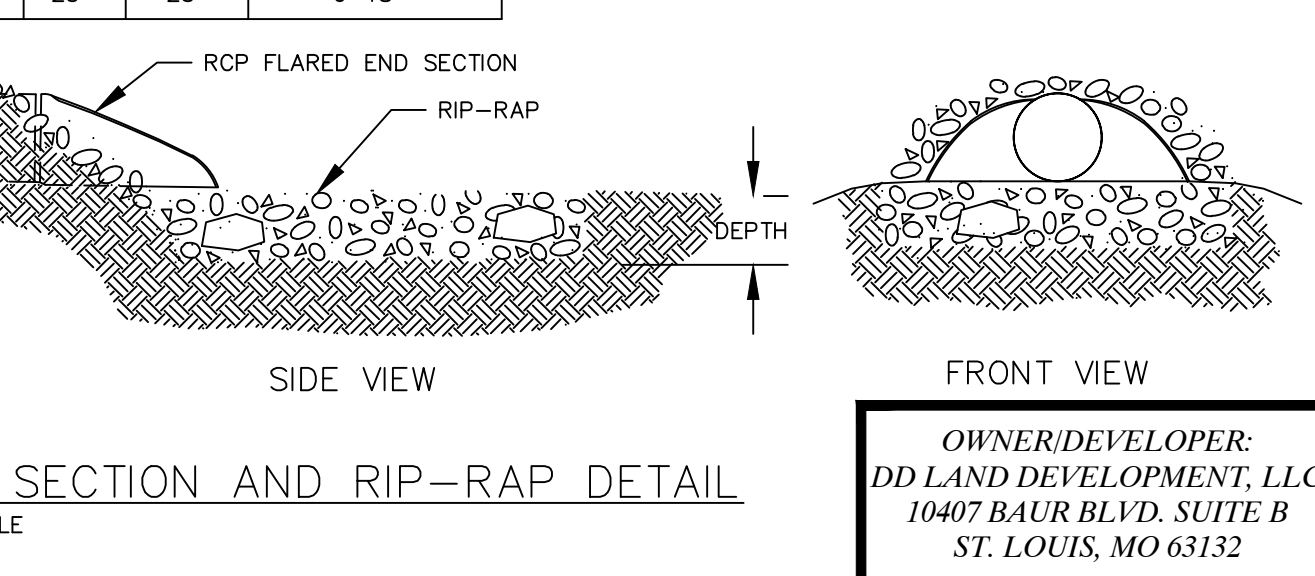
CITY OF O'FALLON ENGINEERING DEPARTMENT O'FALLON, MISSOURI	
STORM DRAIN MARKER LOCATION	



NOTE: THE 100 YEAR STORM WATER FLOW SHALL NOT EXCEED THE LOW SILL ELEVATION OF THE HOUSE OR WINDOW WELLS WILL BE REQUIRED.

RIP-RAP SCHEDULE (MINIMUMS)

PIPE DIA. (IN.)	DEPTH (IN.)	WIDTH (FT.)	LENGTH (FT.)	MIN. TO MAX. SIZE RIP-RAP (IN.)
12	12	4	10	4-12
15	12	4	11	4-12
18	12	4	12	6-12
21	12	5	13	6-12
24	18	6	14	6-12
30	18	7	16	6-12
36	18	12	20	6-12
48	24	20	20	6-18
60	24	25	25	6-18



636-594-0540 (tel.)  
 636-594-0512 (fax)  
 mail@ochran.com  
**OC HRAN**  
 Civil Engineering  
 Land Surveying  
 Architecture  
 Site Development  
 General Consulting  
 Master Planning

Missouri State Certificate of Authority Numbers:  
 Survey : 000380  
 Engineering : 001655  
 Architecture : 2002014240

Three working days prior to the start of any excavation call 1-800-868-8878 for utility location information.  
 All OSHA rules & regulations apply. Construction required by these plans shall be strictly followed (i.e. trenching, blasting, etc.)

STATE OF MISSOURI  
 ELLIOTT R. REED  
 PROFESSIONAL ENGINEER  
 NUMBER PE-200602845

THE STREETS OF CALEDONIA  
 PHASE 3 RESIDENTIAL  
 O'FALLON, MISSOURI

DATE: JMM  
 DATE: MAY 25, 2021  
 SCALE: NO SCALE  
 PROJ. NO: 17-6821  
 SHEET NO: C14.06

OWNER/DEVELOPER:  
 DD LAND DEVELOPMENT, LLC  
 10407 BAUR BLVD, SUITE B  
 ST. LOUIS, MO 63132