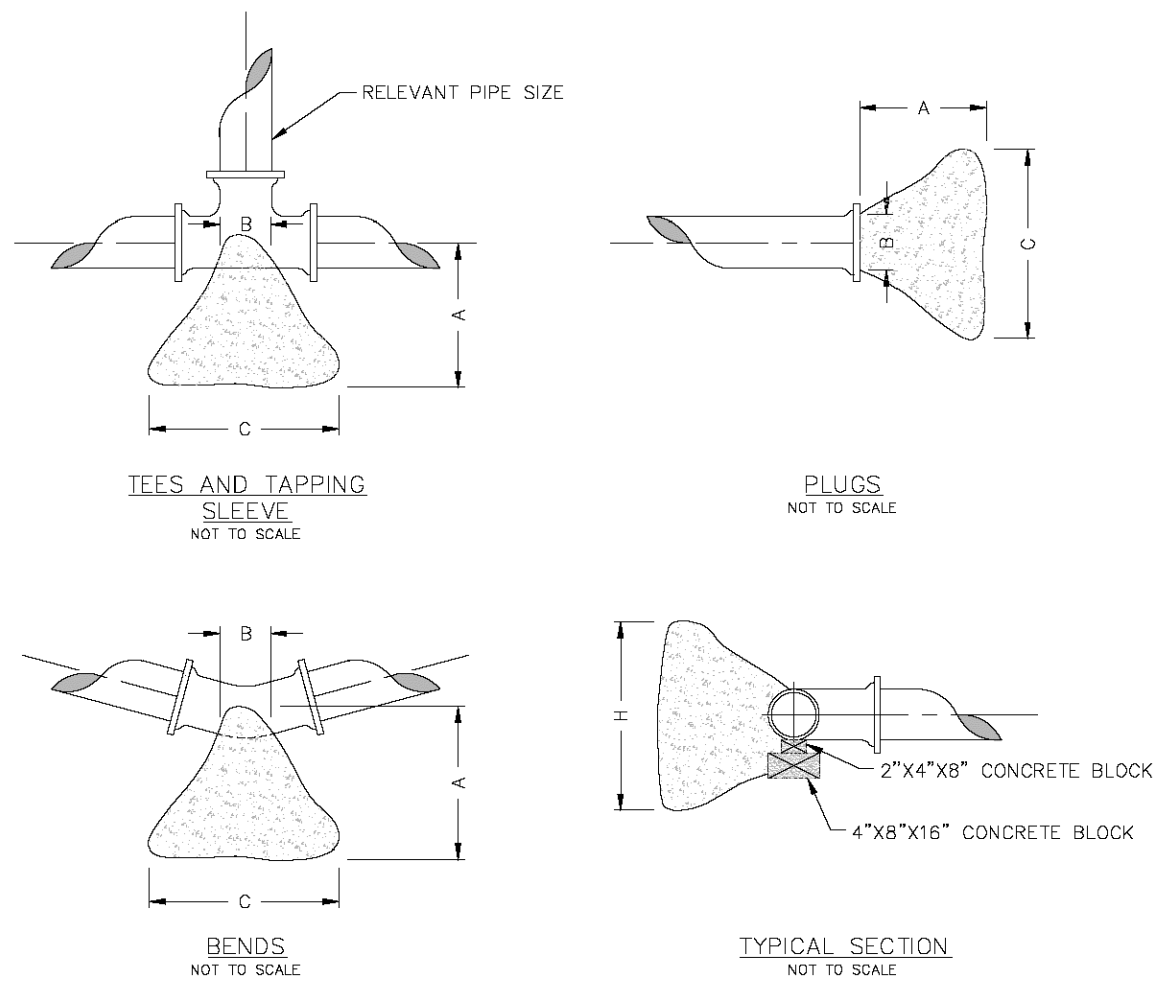


NOTE: THIS DETAIL IS FROM PWS#2



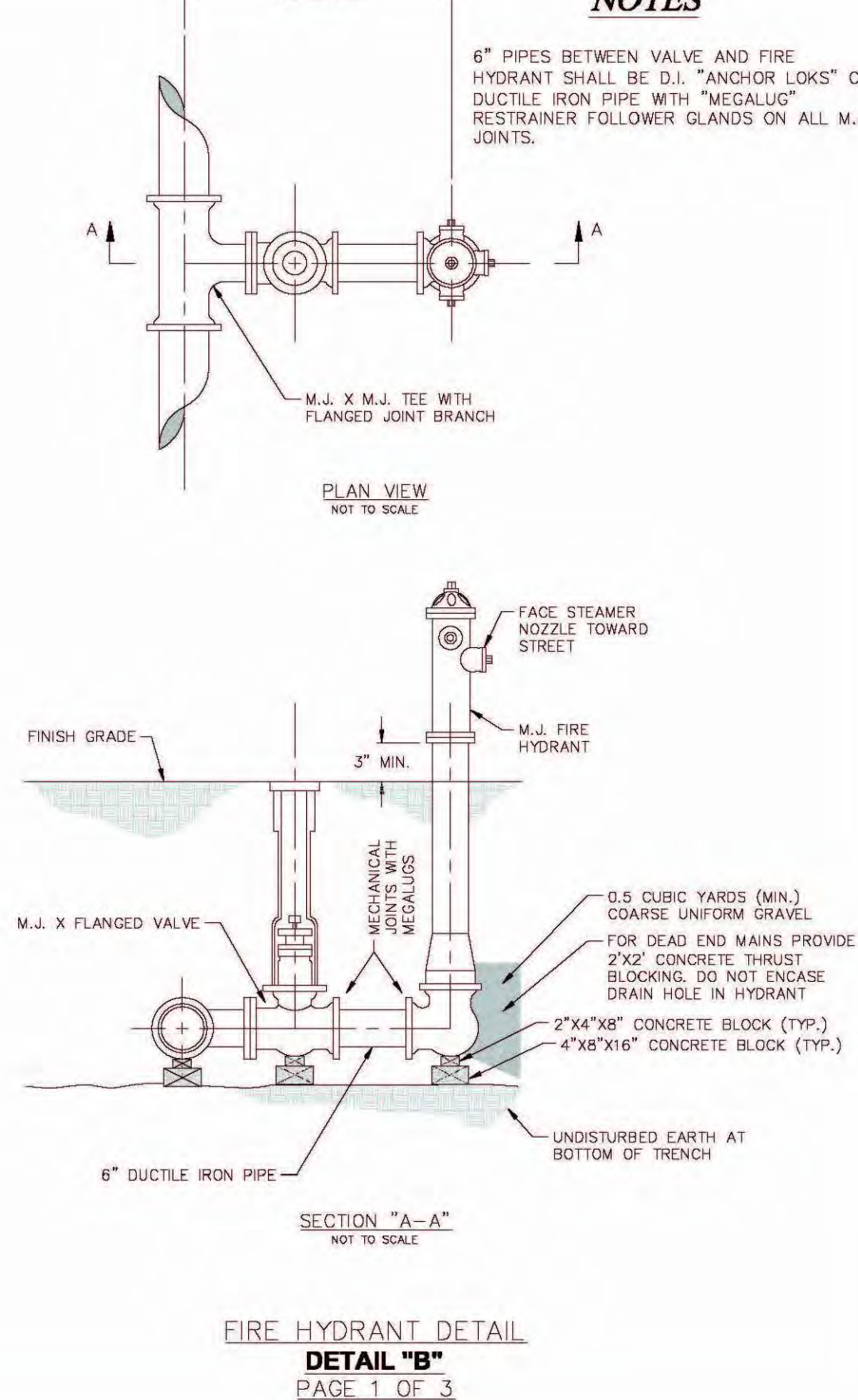
**THRUST BLOCK DIMENSIONS - INCHES**

PIPE DIA.	ALL FTGS.			TEE PLUG TAPPING		90 DEGREE BEND		45 DEGREE BEND		22-1/2 BEND		11-1/4 BEND	
	A	B	C	H	C	H	C	H	C	H	C	H	
4	14	4	24	12	26	15	18	12	12	12	12	12	
6	16	6	36	18	36	24	30	18	24	12	12	12	
8	20	8	36	30	42	36	36	24	24	18	18	12	
10	20	10	48	36	66	36	36	28	24	18	18	18	
12	24	12	68	36	82	42	52	36	40	24	28	18	

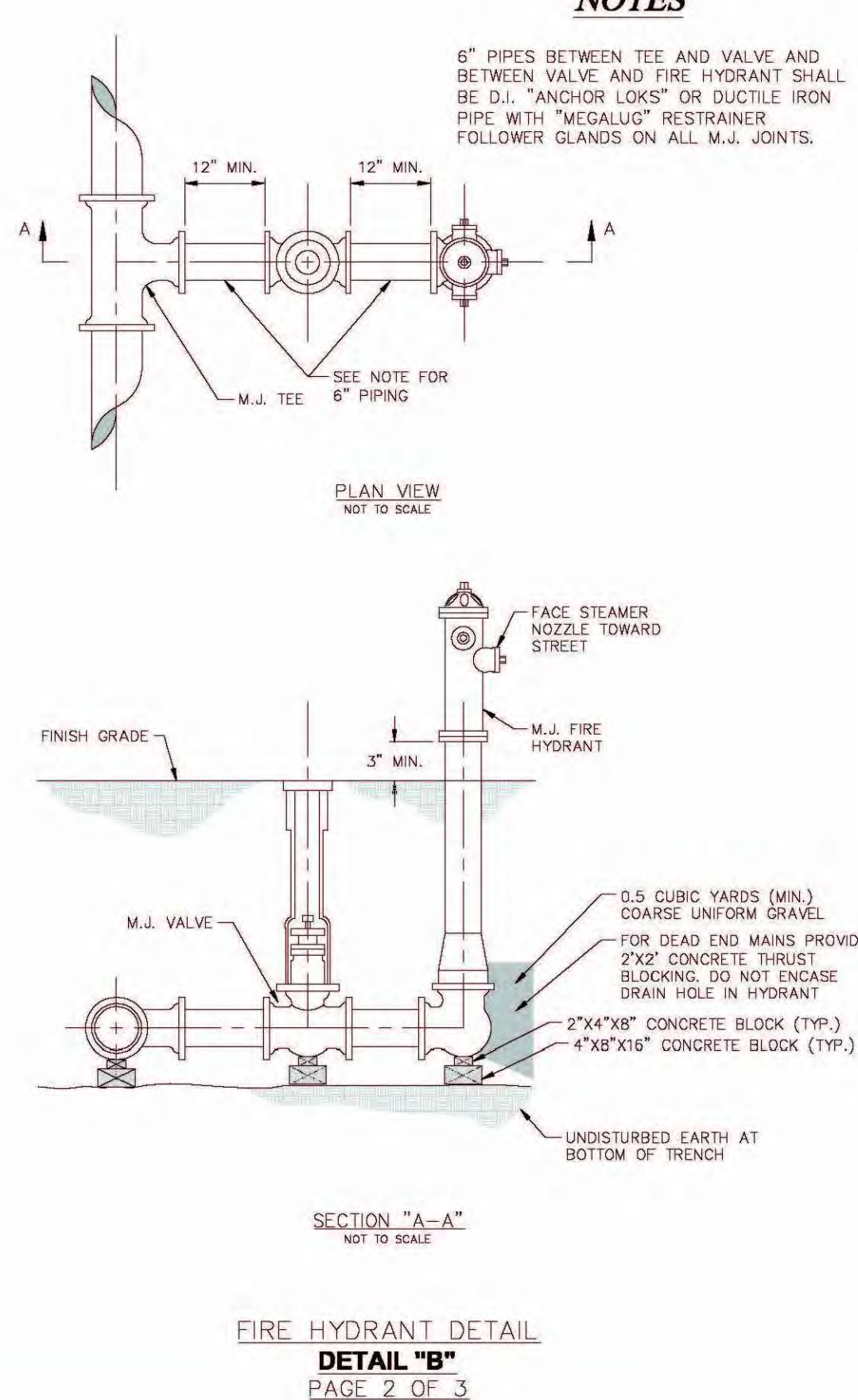
**NOTE**  
FOR FITTINGS LARGER THAN 12", SPECIAL RESTRAINT DESIGNS ARE REQUIRED.

**HORIZONTAL THRUST BLOCKING  
DETAIL "C"**

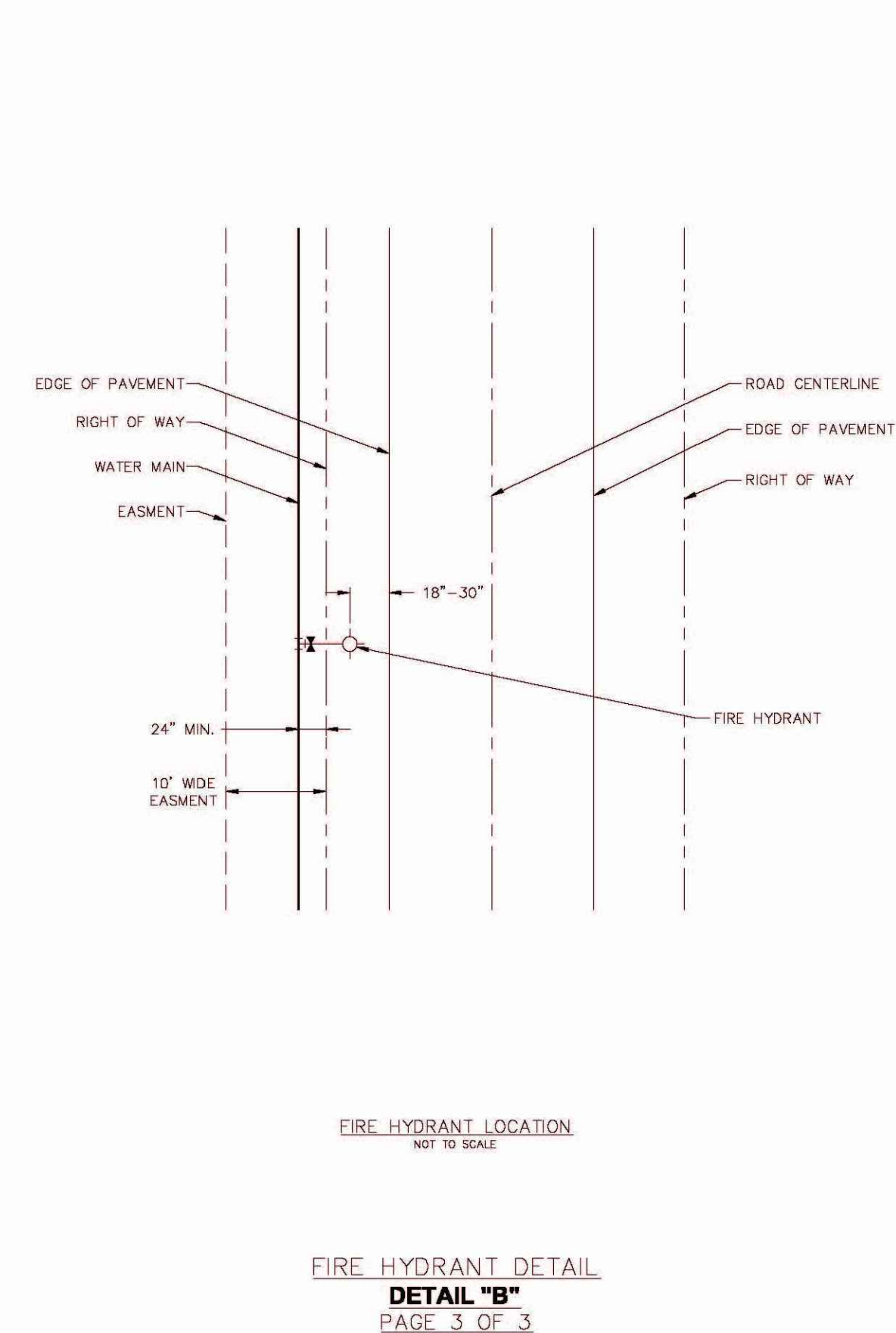
NOTE: THIS DETAIL IS FROM PWS#2



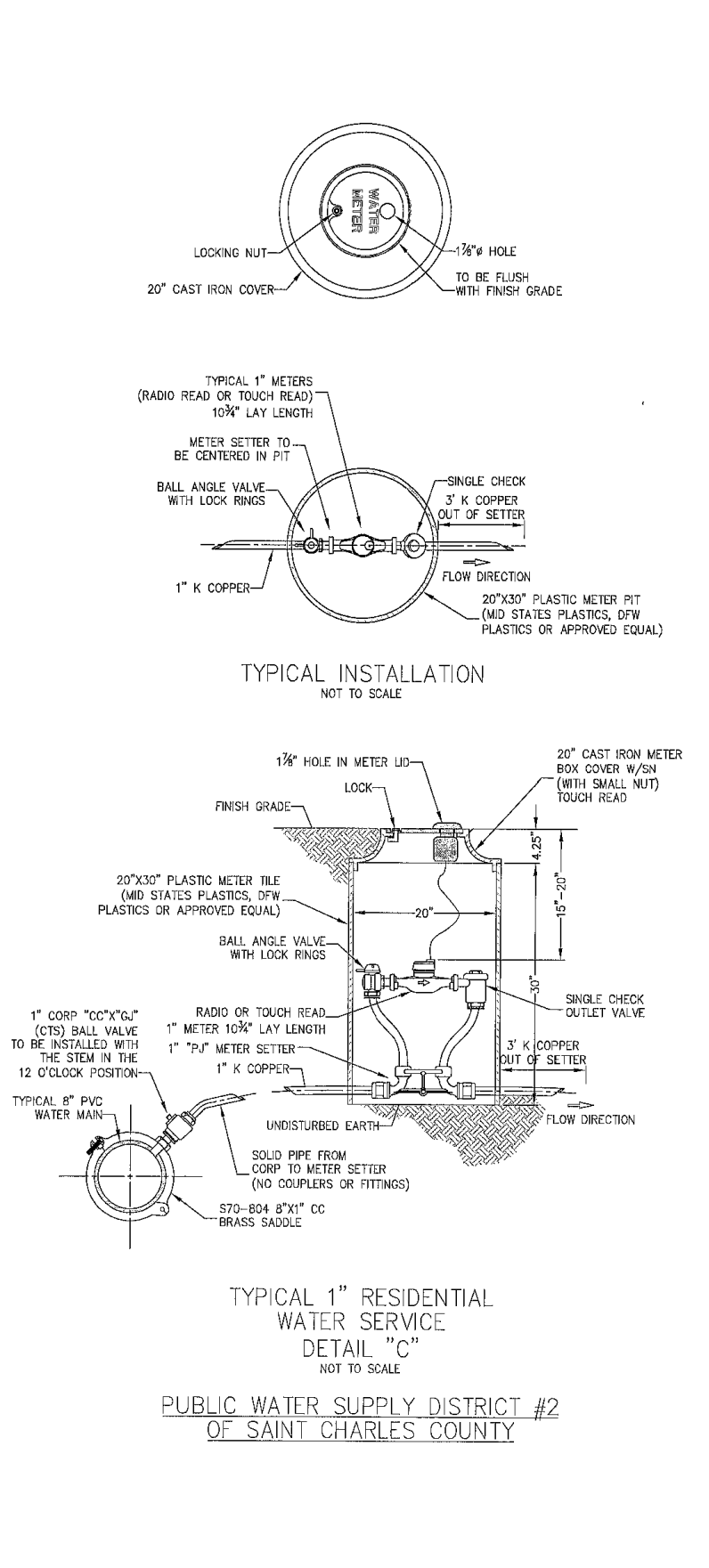
NOTE: THIS DETAIL IS FROM PWS#2



NOTE: THIS DETAIL IS FROM PWS#2

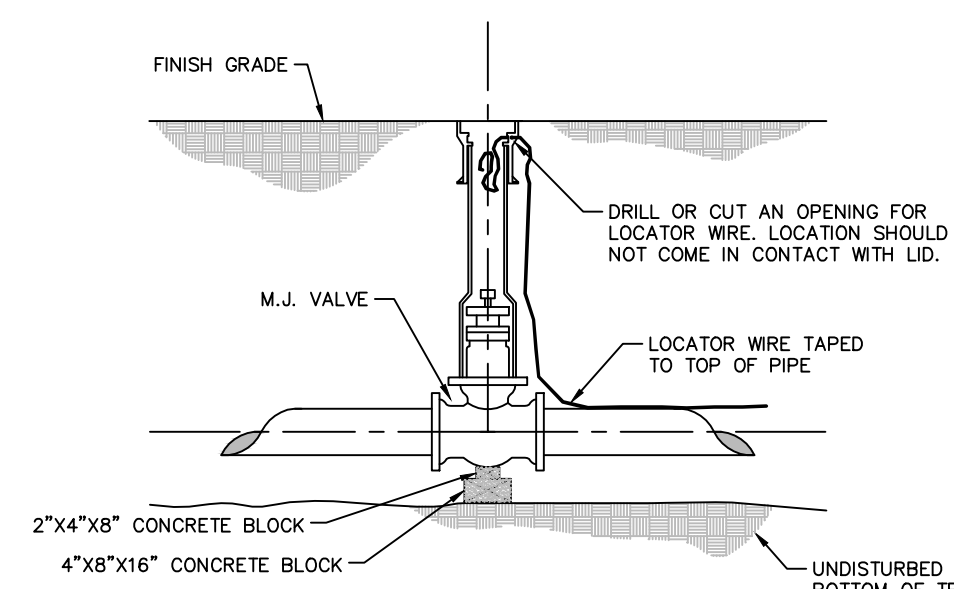


NOTE: THIS DETAIL IS FROM PWS#2

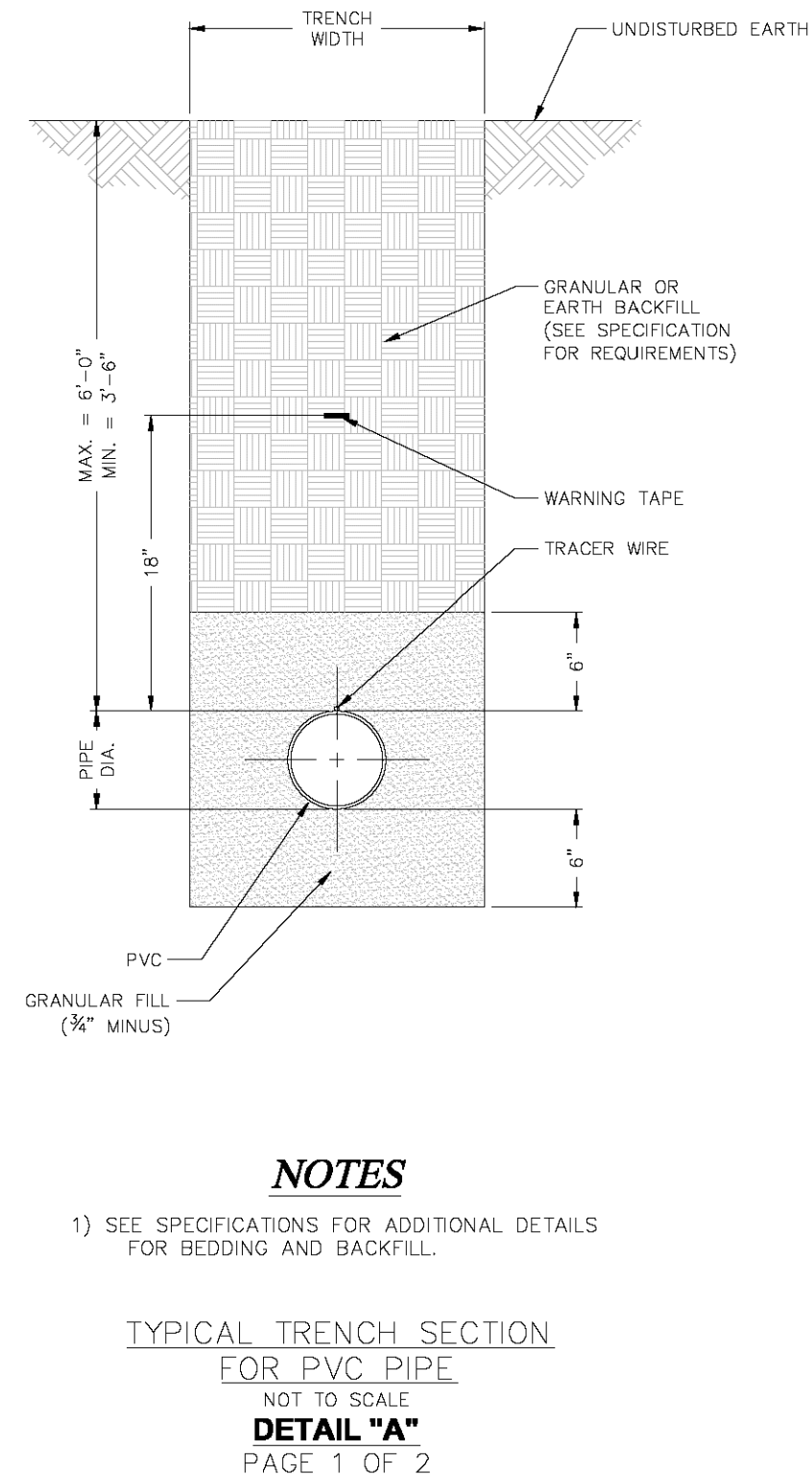


NOTE: THIS DETAIL IS FROM PWS#2

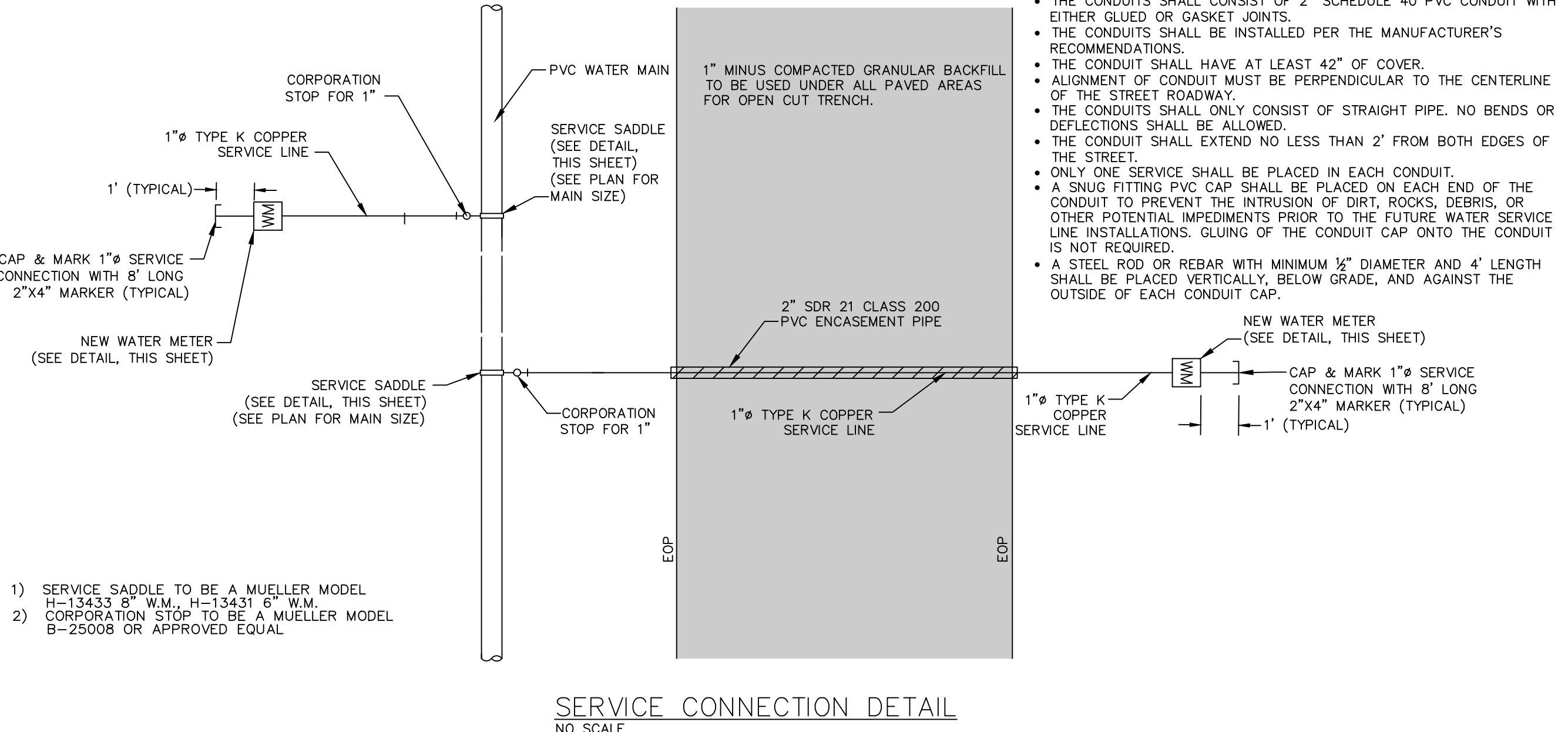
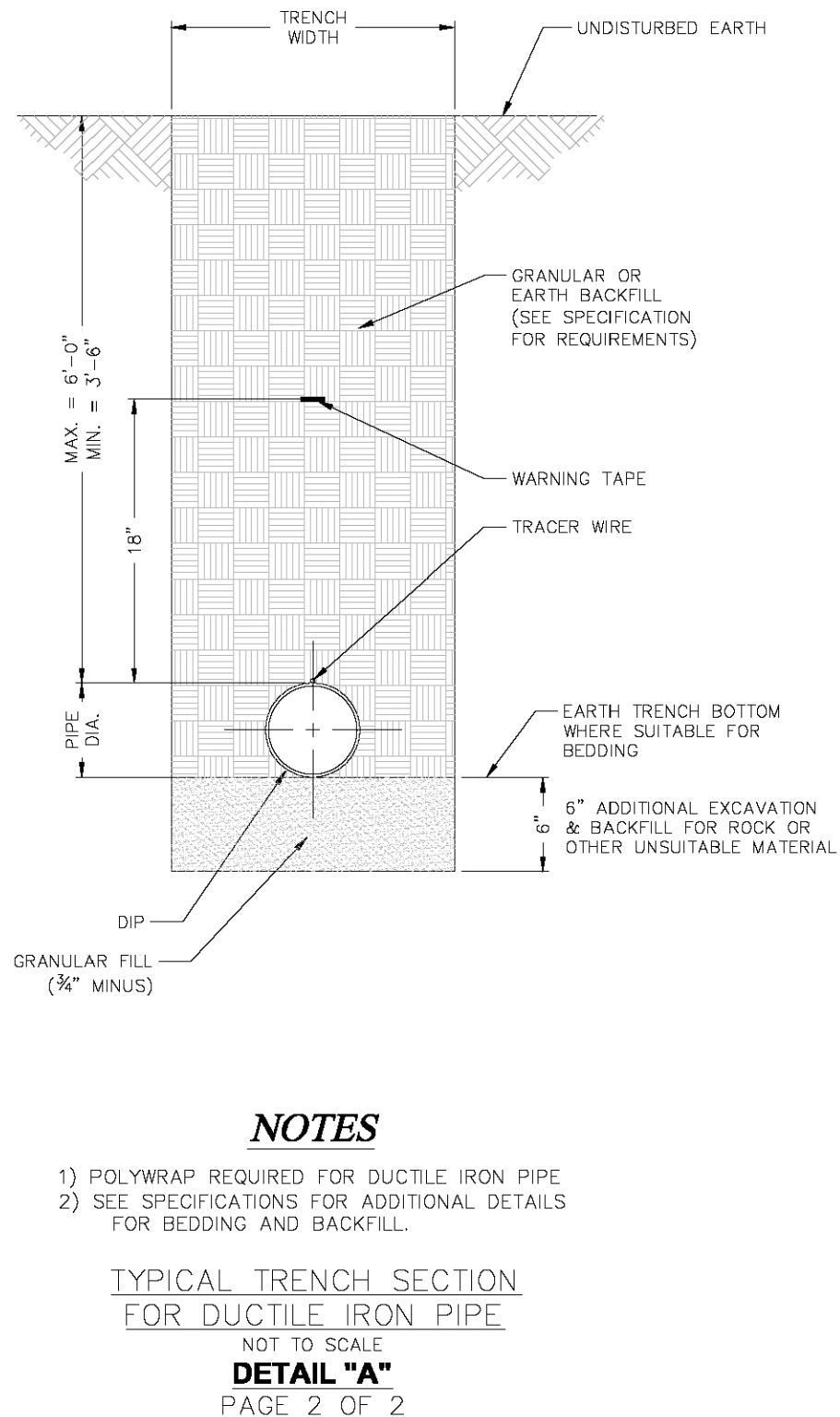
Buffalo box is an acceptable product to use. Tyler 562-S and 564-S are acceptable products.



NOTE: THIS DETAIL IS FROM PWS#2

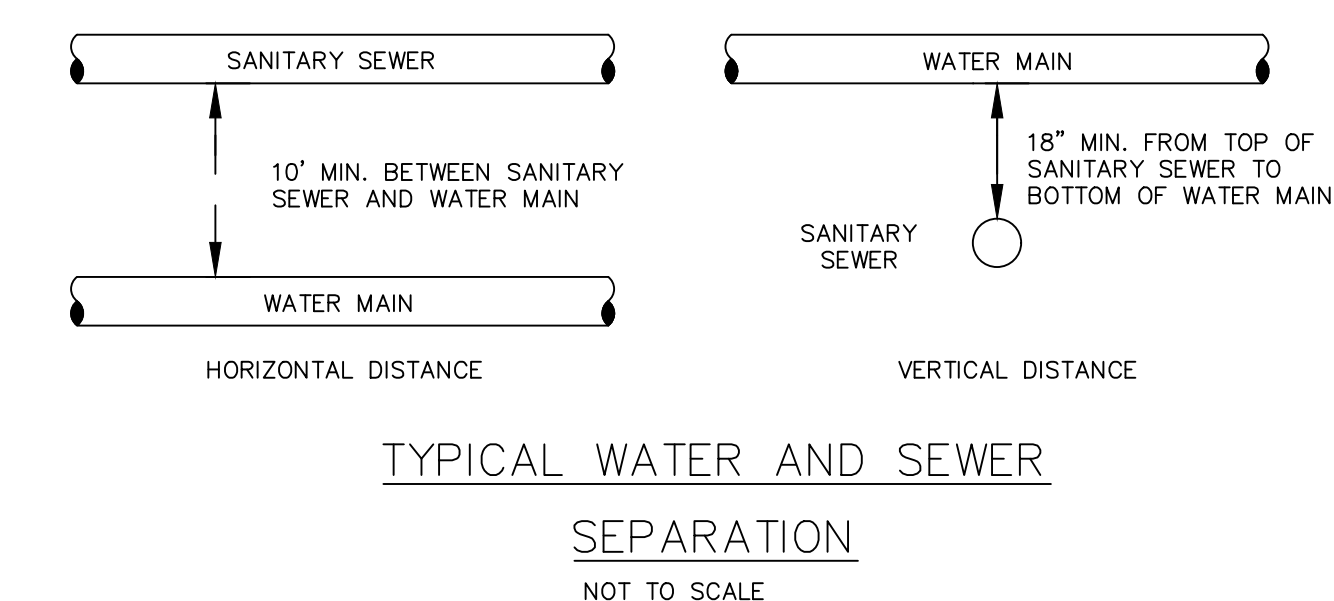


NOTE: THIS DETAIL IS FROM PWS#2

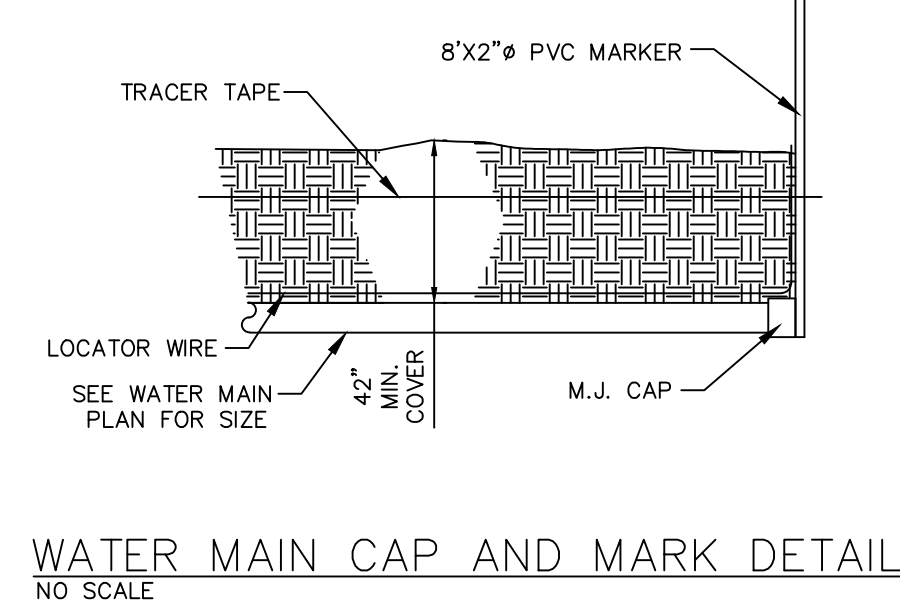


INSTALLATION OF CONDUITS FOR PROPOSED 1" WATER SERVICE LINES WILL REQUIRE THE FOLLOWING:

- THE CONDUITS SHALL CONSIST OF 2" SCHEDULE 40 PVC CONDUIT WITH EITHER GLUED OR GASKET JOINTS.
- THE CONDUITS SHALL BE INSTALLED PER THE MANUFACTURER'S RECOMMENDATIONS.
- THE CONDUIT SHALL HAVE AT LEAST 42" OF COVER.
- ALIGNMENT OF CONDUIT MUST BE PERPENDICULAR TO THE CENTERLINE OF THE STREET ROADWAY.
- THE CONDUITS SHALL ONLY CONSIST OF STRAIGHT PIPE. NO BENDS OR DEFLECTIONS SHALL BE ALLOWED.
- THE CONDUIT SHALL EXTEND NO LESS THAN 2' FROM BOTH EDGES OF THE STREET.
- ONLY ONE SERVICE SHALL BE PLACED IN EACH CONDUIT.
- A SNUG FITTING PVC CAP SHALL BE PLACED ON EACH END OF THE CONDUIT TO PREVENT THE INTRUSION OF DIRT, ROCKS, DEBRIS, OR OTHER POTENTIAL IMPEDIMENTS PRIOR TO THE FUTURE WATER SERVICE LINE INSTALLATIONS. GLUING OF THE CONDUIT CAP ONTO THE CONDUIT IS NOT REQUIRED.
- A STEEL ROD OR REBAR WITH MINIMUM 1/2" DIAMETER AND 4' LENGTH SHALL BE PLACED VERTICALLY, BELOW GRADE, AND AGAINST THE OUTSIDE OF EACH CONDUIT CAP.



Ductile Iron Pipe installation shall follow the Ductile Iron Research Association (DIPRA) guide line.  
The Installation of PVC Pipe shall follow the Uni-Bell PVC Pipe Association Handbook of PVC Design and Construction.



636-594-0540 (tel)  
636-594-0512 (fax)  
mail@ochran.com  
5304 E. Independence Dr.  
Union, Missouri 63084

**MOHRAN**  
Civil Engineering  
Land Surveying  
Architecture  
Site Development  
General Consulting  
Master Planning

Missouri State Certificate of Authority Numbers:  
Survey: 000380  
Engineering: 001655  
Architecture: 200214240

Three working days prior to the start of any excavation call 1-800-465-4655 for utility location information.

All OSHA rules & regulations in effect shall be strictly followed. Construction required by these plans shall be strictly followed (ie. trenching, blasting, etc.)

STATE OF MISSOURI  
J. Elliott R. Reed  
Professional Engineer  
NUMBER PE-200602845

THE STREETS OF CALEDONIA  
PHASE 3 RESIDENTIAL  
O'FALLON, MISSOURI

DATE: JMM  
APP'D BY: ERR  
DATE: MAY 25, 2021  
SCALE: NO SCALE  
PROJ NO: 17-6821  
DWG NO: C14.08

OWNER/DEVELOPER:  
DD LAND DEVELOPMENT, LLC  
10407 BAUR BLVD, SUITE B  
ST. LOUIS, MO 63132

Drawing name: F:\17-6821 - 260 Acre Tract along Hwy 40, O'Fallon, MO\AutoCad Drawings\6821 - Plan Sheets\Construction Drawings\PH3 Residential\Drawings\PH3 Residential Plans\45\_Detail Sheet - Phase 3.dwg Plotted on: May 25, 2021 - 3:00pm Plotted by: Jmeyer