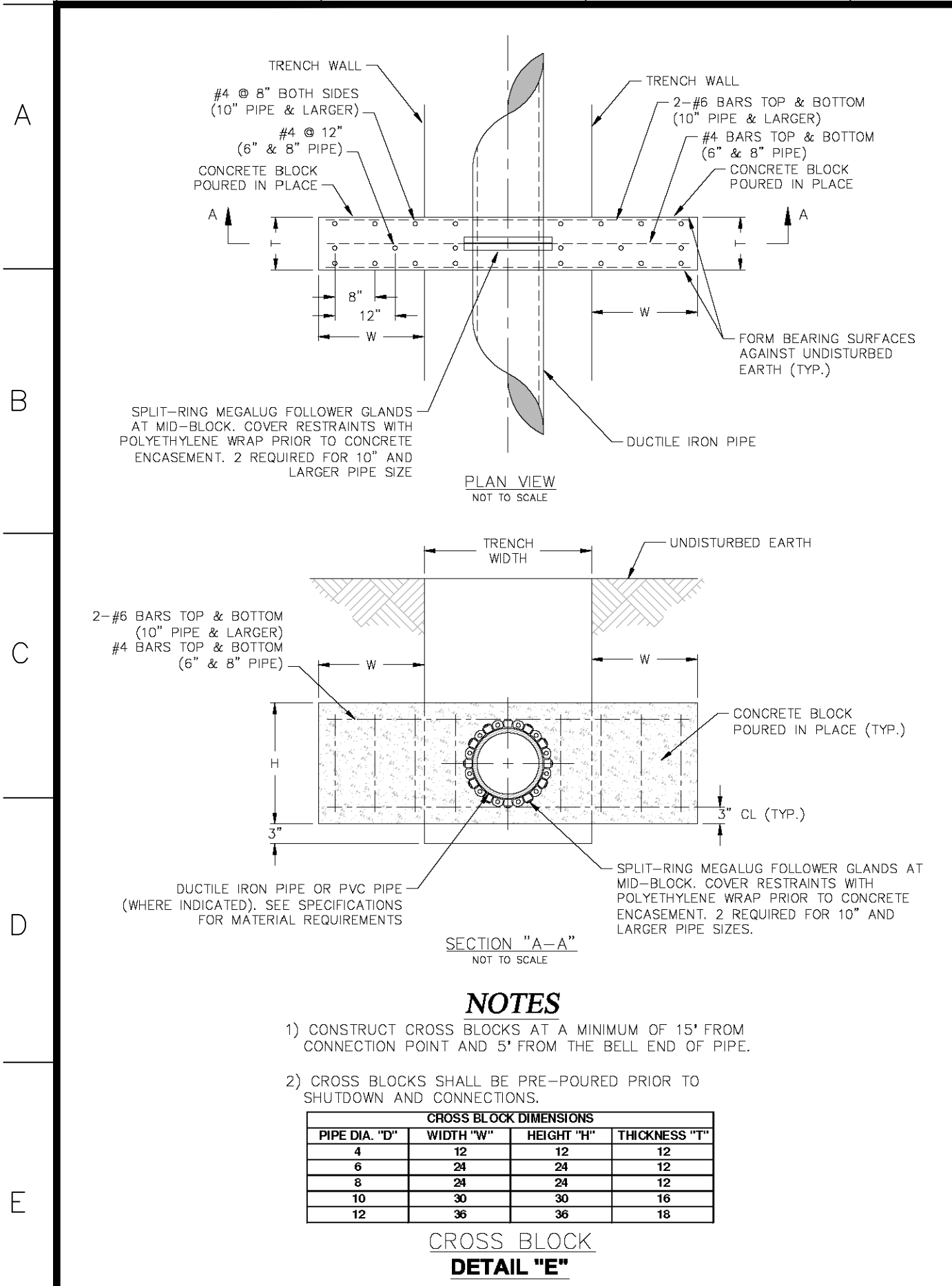


Drawing name: F:\17-6821 - 260 Acre Tract along Hwy 40, O'Fallon, MO\AutoCad Drawings\6821 - Plan Sheets\Construction Drawings\PH3 Residential Plans\45\_Detail Sheet - Phase 3.dwg Tab: C14.09 Plotted on: May 25, 2021 - 2:59pm Plotted by: Jmeyer

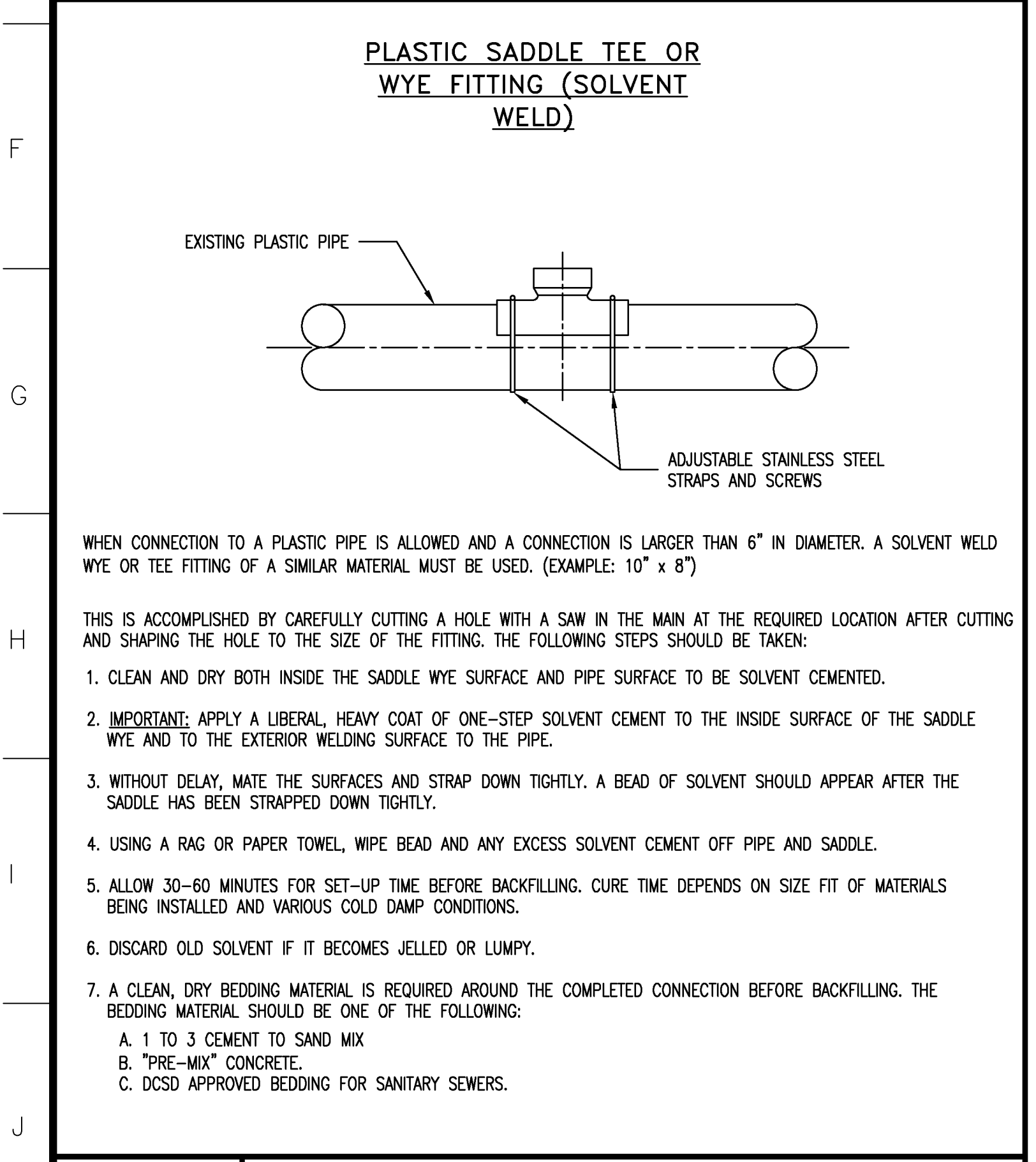
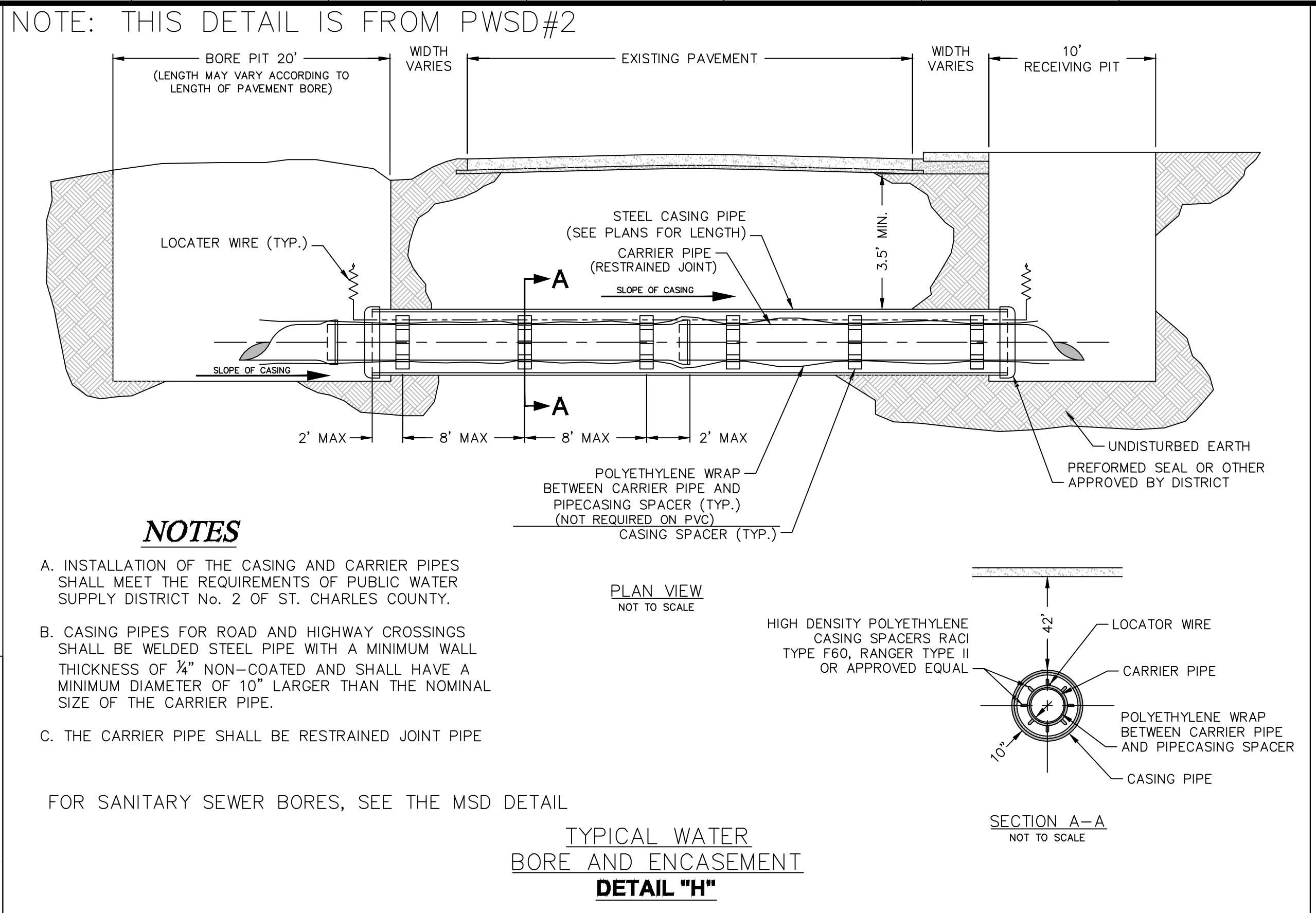
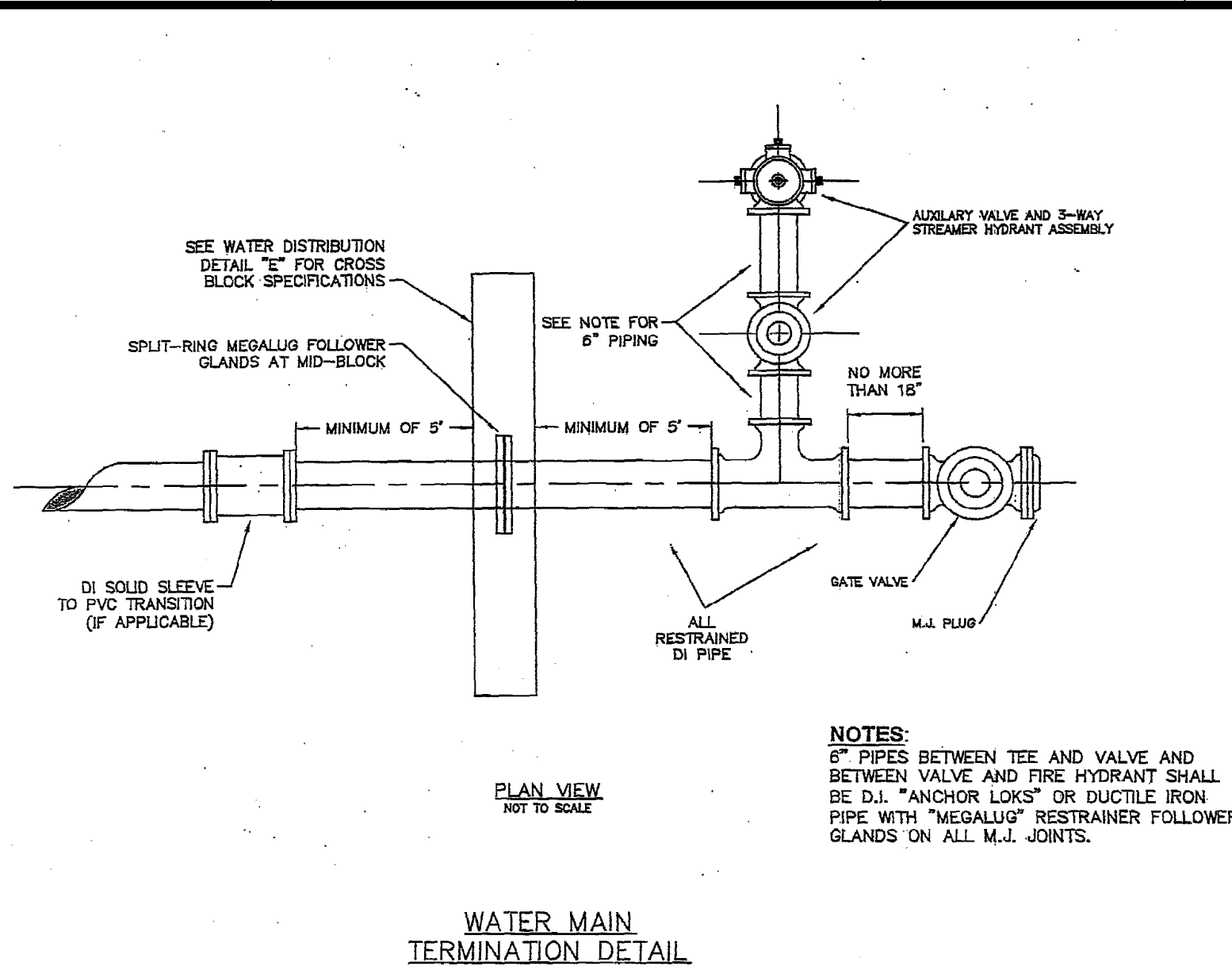


**NOTES**

- CONSTRUCT CROSS BLOCKS AT A MINIMUM OF 15' FROM CONNECTION POINT AND 5' FROM THE BELL END OF PIPE.
- CROSS BLOCKS SHALL BE PRE-POURED PRIOR TO SHUTDOWN AND CONNECTIONS.

PIPE DIA. "D"	WIDTH "W"	HEIGHT "H"	THICKNESS "T"
4	12	12	12
6	24	24	12
8	24	24	12
10	30	30	18
12	36	36	18

**CROSS BLOCK**  
**DETAIL "E"**



**Duckett Creek Sanitary District**

8" AND LARGER CONNECTION TO PLASTIC MAIN

Own By: BSM  
App By: KA  
ckd By: MDOB  
Date: DEC. 2015  
Detail No: 20A

636-594-0540 (tel.)  
636-594-0512 (fax)  
mailto:ochran@ochran.com

**UCHRAN**  
Civil Engineering  
Land Surveying  
Architecture  
Site Development  
General Consulting  
Master Planning

Missouri State Certificate of Authority Numbers:  
Survey: 000380  
Engineering: 001655  
Architecture: 2002014240

Three working days prior to the start of any excavation call 1-800-463-8715 for utility location information.

All OSHA rules & regulations apply to these construction projects. All safety plans shall be strictly followed (ie. trenching, blasting, etc.)

STATE OF MISSOURI  
5/25/21  
ELLIOTT R. REED  
Professional Engineer  
Number PE-2006002845

**THE STREETS OF CALEDONIA**  
**PHASE 3 RESIDENTIAL**  
**O'FALLON, MISSOURI**

DATE: \_\_\_\_\_  
DESIGNER: \_\_\_\_\_  
DATE: \_\_\_\_\_  
APPROVED BY: \_\_\_\_\_  
DATE: \_\_\_\_\_  
SCALE: NO SCALE  
PROJ. NO: 17-6821  
SHEET NO: C14.09

OWNER/DEVELOPER:  
DD LAND DEVELOPMENT, LLC  
10407 BAUR BLVD, SUITE B  
ST. LOUIS, MO 63132