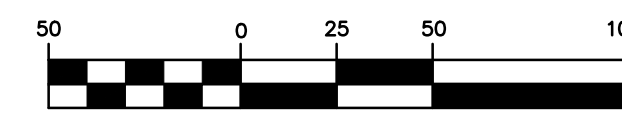


EXISTING CONDITIONS - PHASE 3



MAY, 2021

LEGEND

INDEX CONTOUR	---
INTERMEDIATE CONTOUR	---
PROPERTY LINE	---
RIGHT-OF-WAY	---
LOT LINE	---
BUILDING SETBACK	---
EASEMENT	---
UNDERGROUND ELECTRIC	---
UNDERGROUND TELEPHONE	---
UNDERGROUND FIBER OPTIC	---
SANITARY SEWER	---
SANITARY MANHOLE	○
SANITARY FORCE MAIN	---
STORM SEWER	---
INLET	□
GRATED INLET	□
GAS LINE	---
GAS VALVE	○
WATER LINE	---
FIRE HYDRANTS	○
WATER VALVE	○
TREELINE	---
FENCE	---
CONCRETE PAVEMENT	---
ASPHALT PAVEMENT	---
GRAVEL SURFACE	---

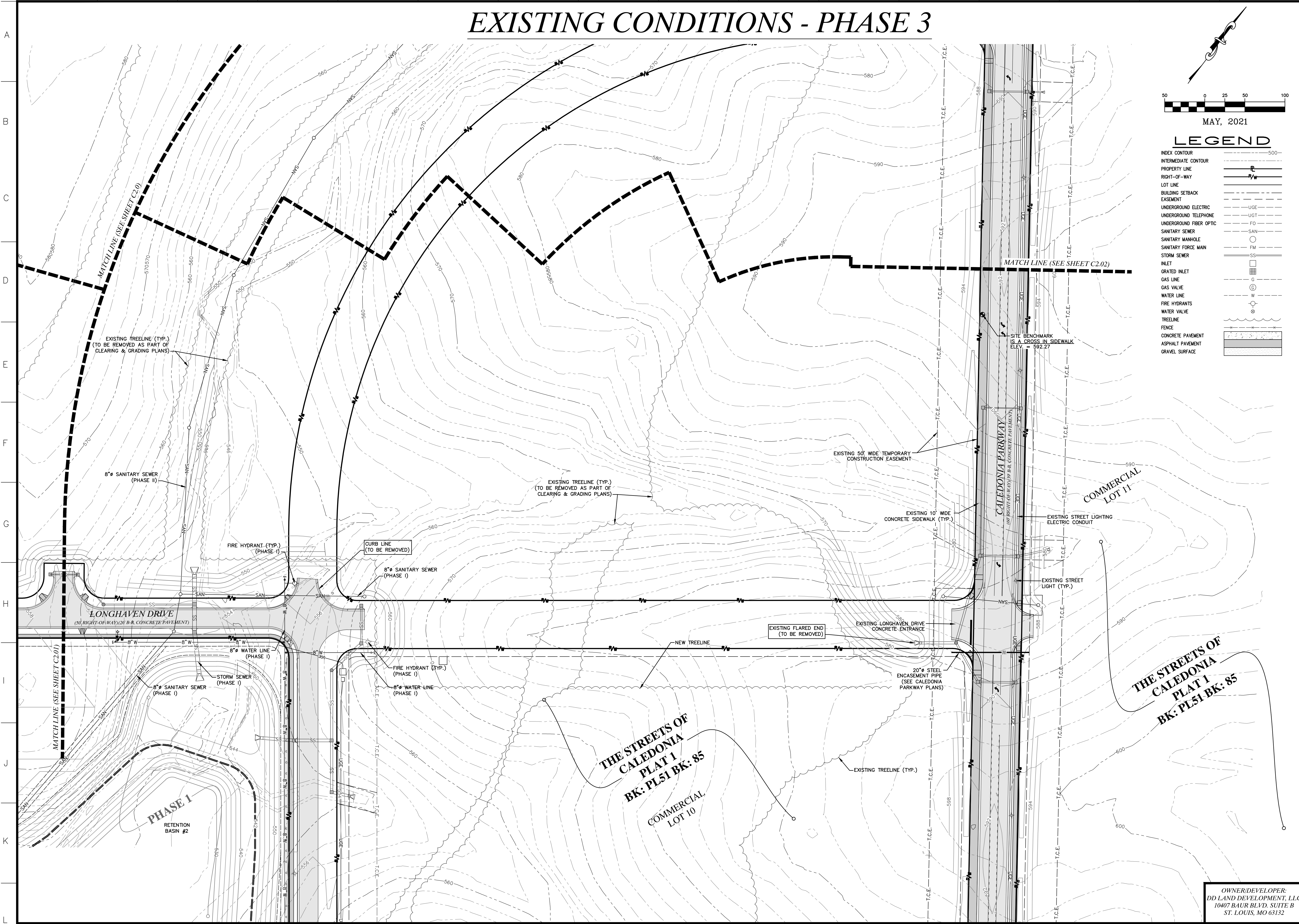
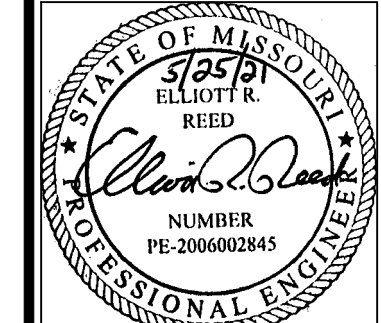
636-584-0540 (tel.)
636-584-0512 (fax)
mailto:ochran@ochran.com

UCHRAN
Civil Engineering
Land Surveying
Architecture
Site Development
General Consulting
Master Planning

Missouri State Certificate of Authority Numbers:
Survey: 000380
Engineering: 001655
Architecture: 2002014240

Three working days prior to the start of any excavation, call 1-800-NIC-BITE for utility location information.

All OSHA rules & regulations and all applicable local codes and regulations apply to these construction projects. Plans shall be strictly followed (i.e. trenching, blasting, etc.).



THE STREETS OF CALEDONIA
PHASE 3 RESIDENTIAL
O'FALLON, MISSOURI

DATE:	DATE:	DATE:	DATE:
DESIGN BY:	DESIGN BY:	DESIGN BY:	DESIGN BY:
APP'D BY:	APP'D BY:	APP'D BY:	APP'D BY:
JMM	ERR		
DATE: MAY 25, 2021			
SCALE: 1" = 50'			
PROJ. NO: 17-6821			
SHEET NO: C2.03			

OWNER/DEVELOPER:
DD LAND DEVELOPMENT, LLC
10407 BAUR BLVD, SUITE B
ST. LOUIS, MO 63132