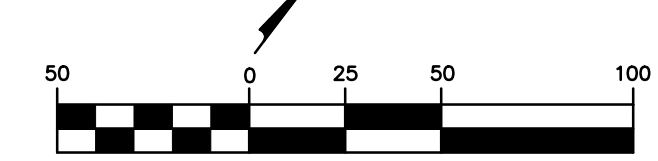


GRADING PLAN - PHASE 3



MAY, 2021

LEGEND

EXISTING PROPOSED

- 500- INDEX CONTOUR
- 498- INTERMEDIATE CONTOUR
- P—W— PROPERTY LINE
- R—W— RIGHT-OF-WAY
- LOT LINE
- EASEMENT
- U— UTILITY POLE / GUY WIRE
- UGE UNDERGROUND ELECTRIC
- UGT UNDERGROUND TELEPHONE
- FO UNDERGROUND FIBER OPTIC
- SAN SANITARY SEWER
- SAN SANITARY MANHOLE
- FM SANITARY FORCE MAIN
- SS STORM SEWER
- INLET
- GRATED INLET
- FLARED END SECTIONS
- GAS LINE
- WATER LINE (SIZE)
- FIRE HYDRANTS
- WATER VALVE
- GUARDRAIL
- FENCE
- LIGHT
- CONCRETE PAVEMENT
- ASPHALT PAVEMENT
- RIP-RAP
- STANDARD BASEMENT
- WALKOUT BASEMENT
- TRANSITION LOT
- STREET CREEP

PEDESTRIAN WALKWAYS WILL BE ADA COMPLIANT.

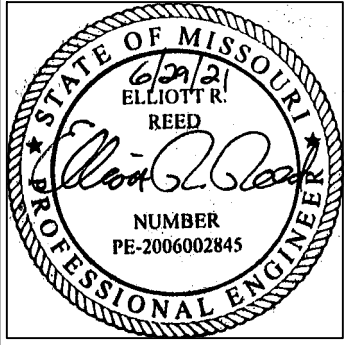
SEE WARPING PLANS FOR SPOT GRADES AT INTERSECTIONS (SHEETS C13.0 AND C13.01)

636-594-0540 (tel.)
636-594-0512 (fax)
mailto:ochran.com

OC HRAN
Civil Engineering
Land Surveying
Architecture
Site Development
General Consulting
Master Planning

630A E. Independence Dr.
Union, Missouri 63084

Missouri State Certificate of Authority Numbers:
Survey: 000380
Engineering: 001655
Architecture: 2002104240

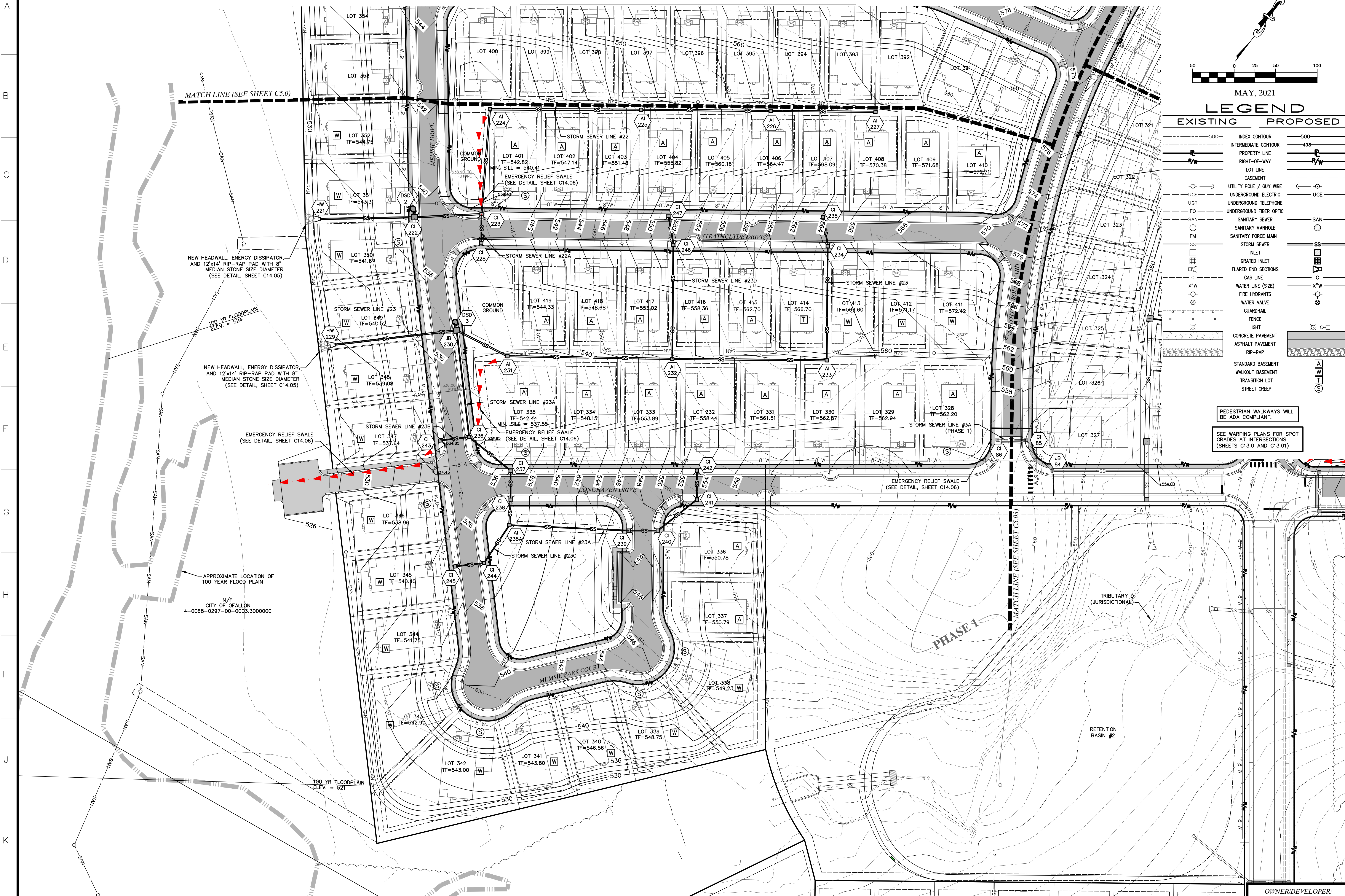


THE STREETS OF CALEDONIA
PHASE 3 RESIDENTIAL
O'FALLON, MISSOURI

DATE	BY	REVISION
06-29-21	JMM	ERR

OWNER/DEVELOPER:
DD LAND DEVELOPMENT, LLC
10407 BAUR BLVD, SUITE B
ST. LOUIS, MO 63132

C5.01



DWG NAME: F:\17-6821 - 260 Acre Tract along Hwy 40, O'Fallon, MO\AutoCAD Drawings\6821 - Plan Sheets\Construction Drawings\PH3 Residential Plans\09_Grading Plan Phase 3.dwg LAYOUT TAB: GRADING PH3-2 PLOTTED ON: Jun 23, 2021 - 4:02pm PLOTTED BY: isconwe