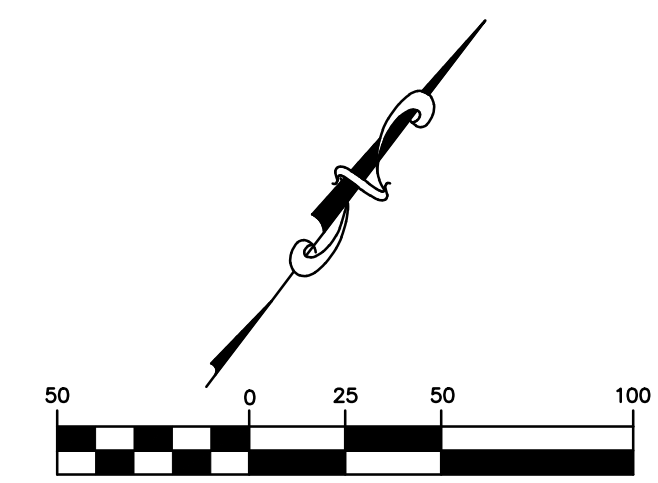
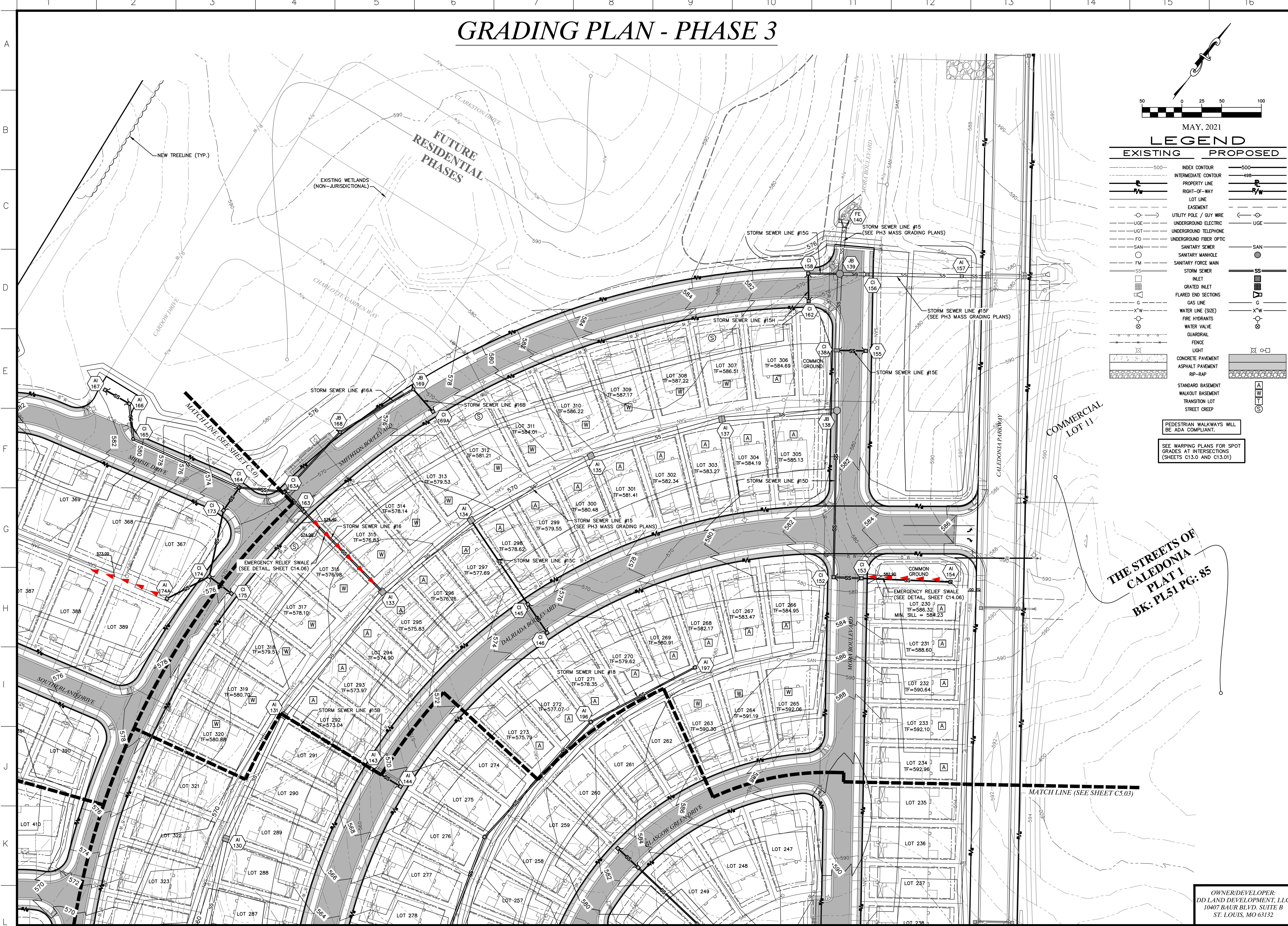


GRADING PLAN - PHASE 3



MAY, 2021

LEGEND

EXISTING	PROPOSED
— 500 —	INDEX CONTOUR
— 498 —	INTERMEDIATE CONTOUR
— P —	PROPERTY LINE
— R/W —	RIGHT-OF-WAY
— L —	LOT LINE
— E —	EASEMENT
— U —	UTILITY POLE / GUY WIRE
— UGE —	UNDERGROUND ELECTRIC
— UGT —	UNDERGROUND TELEPHONE
— FO —	UNDERGROUND FIBER OPTIC
— SAN —	SANITARY SEWER
— S —	SANITARY MANHOLE
— FM —	SANITARY FORCE MAIN
— SS —	STORM SEWER
— I —	INLET
— G —	GRADED INLET
— FL —	FLARED END SECTIONS
— G —	GAS LINE
— W —	WATER LINE (SIZE)
— X —	FIRE HYDRANTS
— V —	WATER VALVE
— G —	GUARDRAIL
— F —	FENCE
— L —	LIGHT
— C —	CONCRETE PAVEMENT
— A —	ASPHALT PAVEMENT
— R —	RIP-RAP
— S —	STANDARD BASEMENT
— W —	WALKOUT BASEMENT
— T —	TRANSITION LOT
— S —	STREET CREEP

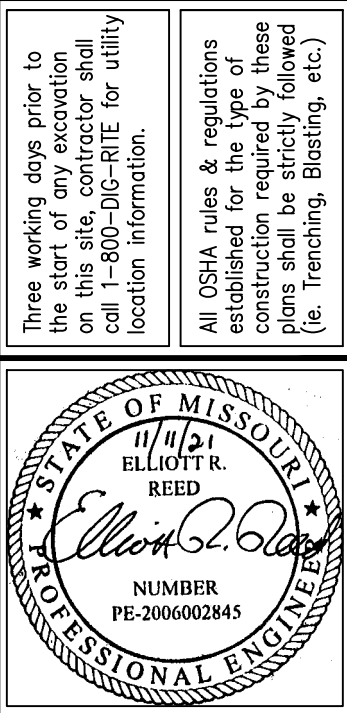
PEDESTRIAN WALKWAYS WILL BE ADA COMPLIANT.

SEE WARPING PLANS FOR SPOT GRADES AT INTERSECTIONS (SHEETS C13.0 AND C13.01)

636-584-0540 (tel.)
636-584-0512 (fax)
mail@ochran.com

CHORAN
Civil Engineering
Land Surveying
Architecture
Site Development
General Consulting
Master Planning

Missouri State Certificate of Authority Numbers:
Survey: 000380
Engineering: 001655
Architecture: 2002014240



THE STREETS OF CALEDONIA
PHASE 3 RESIDENTIAL
O'FALLON, MISSOURI

THE STREETS OF CALEDONIA
PLAT 1
BK: PL.51 PG: 85

GRADING PLAN - PHASE 3

DATE	BY	REVISION
11-11-21	JMM	1 SITE CHANGE ORDER #1

DATE: MAY 25, 2021
SCALE: 1" = 50'
PROJ. NO.: 17-6821
DWG. NO.: C5.02

OWNER/DEVELOPER:
DD LAND DEVELOPMENT, LLC
10407 BAUR BLVD, SUITE B
ST. LOUIS, MO 63132

DWG NAME: F:\17-6821 - 260 Acre Tract along Hwy 40, O'Fallon, MO\AutoCad Drawings\PH3 Residential Plans\09_Grading Plan\09_Grading Plan Phase 3.dwg LAYOUT TAB: GRADING PH3-3 PLOTTED ON: Nov 11, 2021 - 12:58pm PLOTTED BY: jmeier