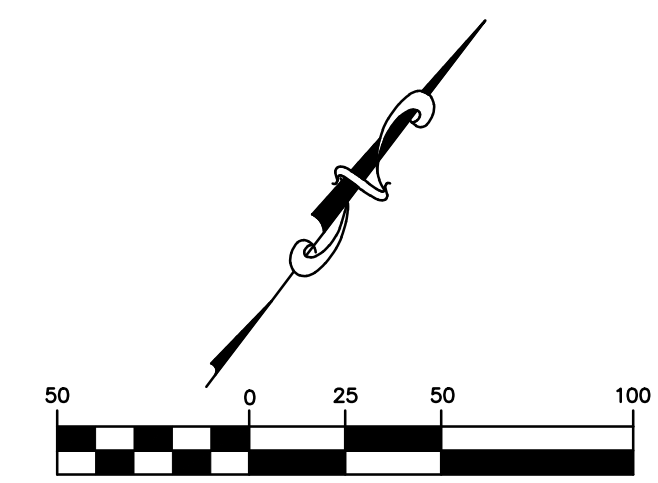
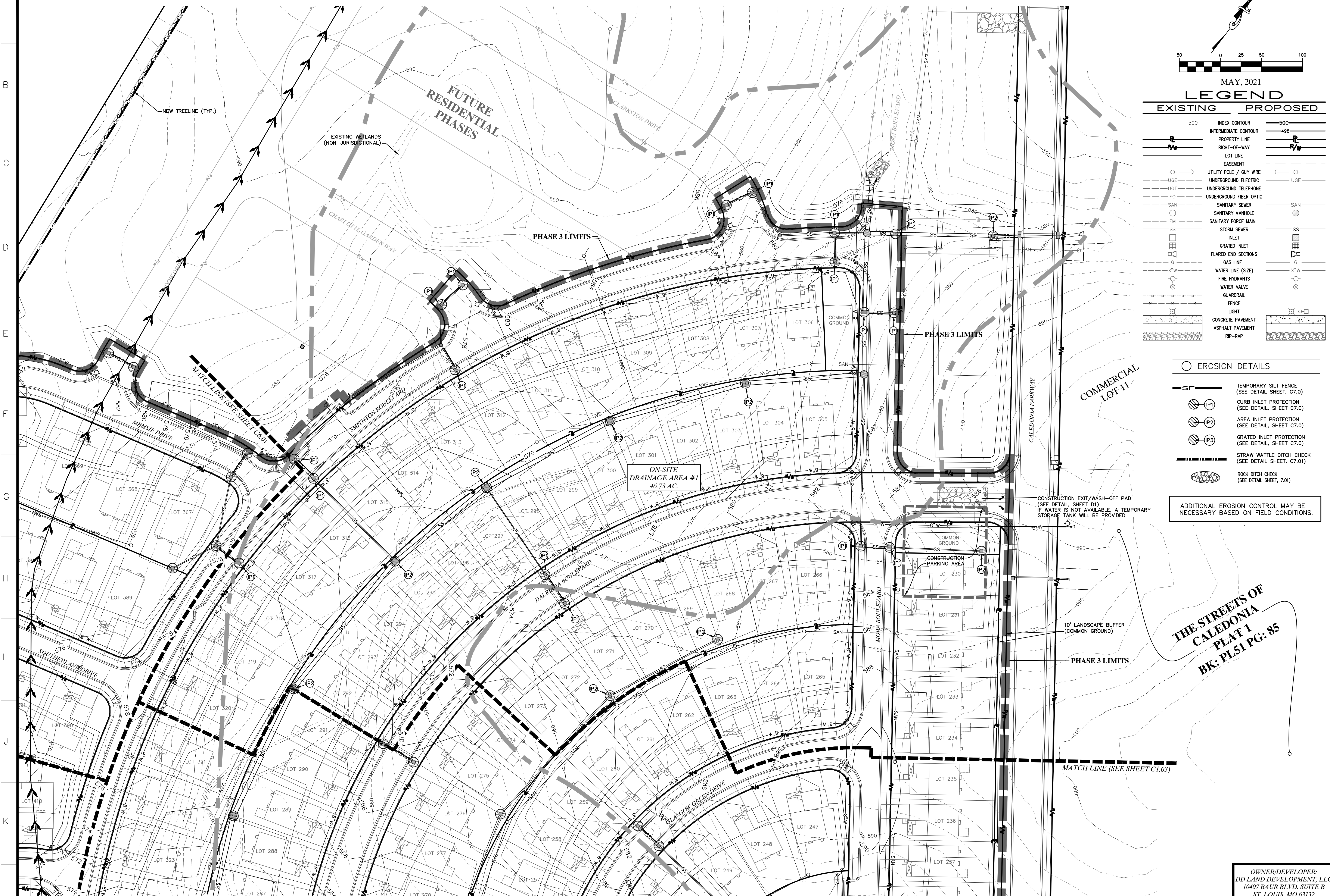


S.W.P.P.P. - PHASE 3



MAY, 2021

LEGEND

EXISTING	PROPOSED
500	INDEX CONTOUR
498	INTERMEDIATE CONTOUR
---	PROPERTY LINE
---	RIGHT-OF-WAY
---	LOT LINE
---	EASEMENT
○	UTILITY POLE / CUY WIRE
---	UNDERGROUND ELECTRIC
---	UNDERGROUND TELEPHONE
---	UNDERGROUND FIBER OPTIC
---	SANITARY SEWER
○	SANITARY MANHOLE
---	SANITARY FORCE MAIN
---	STORM SEWER
---	INLET
---	GRATED INLET
---	FLARED END SECTIONS
---	GAS LINE
---	WATER LINE (SIZE)
---	FIRE HYDRANTS
---	WATER VALVE
---	GUARDRAIL
---	FENCE
---	LIGHT
---	CONCRETE PAVEMENT
---	ASPHALT PAVEMENT
---	RP-RAP

EROSION DETAILS

---	TEMPORARY SILT FENCE (SEE DETAIL SHEET, C7.0)
○ P1	CURB INLET PROTECTION (SEE DETAIL, SHEET C7.0)
○ P2	AREA INLET PROTECTION (SEE DETAIL, SHEET C7.0)
○ P3	GRATED INLET PROTECTION (SEE DETAIL, SHEET C7.0)
---	STRAW WATTLE DITCH CHECK (SEE DETAIL SHEET, C7.01)
---	ROCK DITCH CHECK (SEE DETAIL SHEET, 7.01)

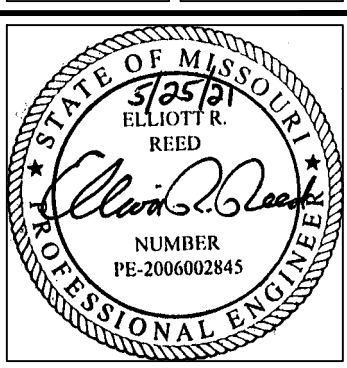
ADDITIONAL EROSION CONTROL MAY BE NECESSARY BASED ON FIELD CONDITIONS.

636-584-0540 (tel.)
636-584-0512 (fax)
mail@ochran.com

CHORAN

- Civil Engineering
- Land Surveying
- Architecture
- Site Development
- General Consulting
- Master Planning

Missouri State Certificate of Authority Numbers:
Survey: 000380
Engineering: 001655
Architecture: 2002014240



THE STREETS OF CALEDONIA
PHASE 3 RESIDENTIAL
O'FALLON, MISSOURI

THE STREETS OF CALEDONIA
PLAT 1
BK: PL51 PG: 85

OWNER/DEVELOPER:
DD LAND DEVELOPMENT, LLC
10407 BAUR BLVD, SUITE B
ST. LOUIS, MO 63132

S.W.P.P.P. - PHASE

DATE	BY	APP'D BY
JUN 01, 2021	JMM	ERR
MAY 25, 2021	JMM	ERR
SCALE:	1" = 50'	
PROJ NO:	17-6821	
DWG NO:	C6.02	

DWG NAME: F:\17-6821 - 260 Acre Tract along Hwy 40, O'Fallon, MO\AutoCad Drawings\6821 - Plan Sheets\Construction Drawings\PH3 Residential\PH3-3 SWPPP PH3-3 PLOTTED ON: May 25, 2021 - 2:37pm PLOTTED BY: tschow