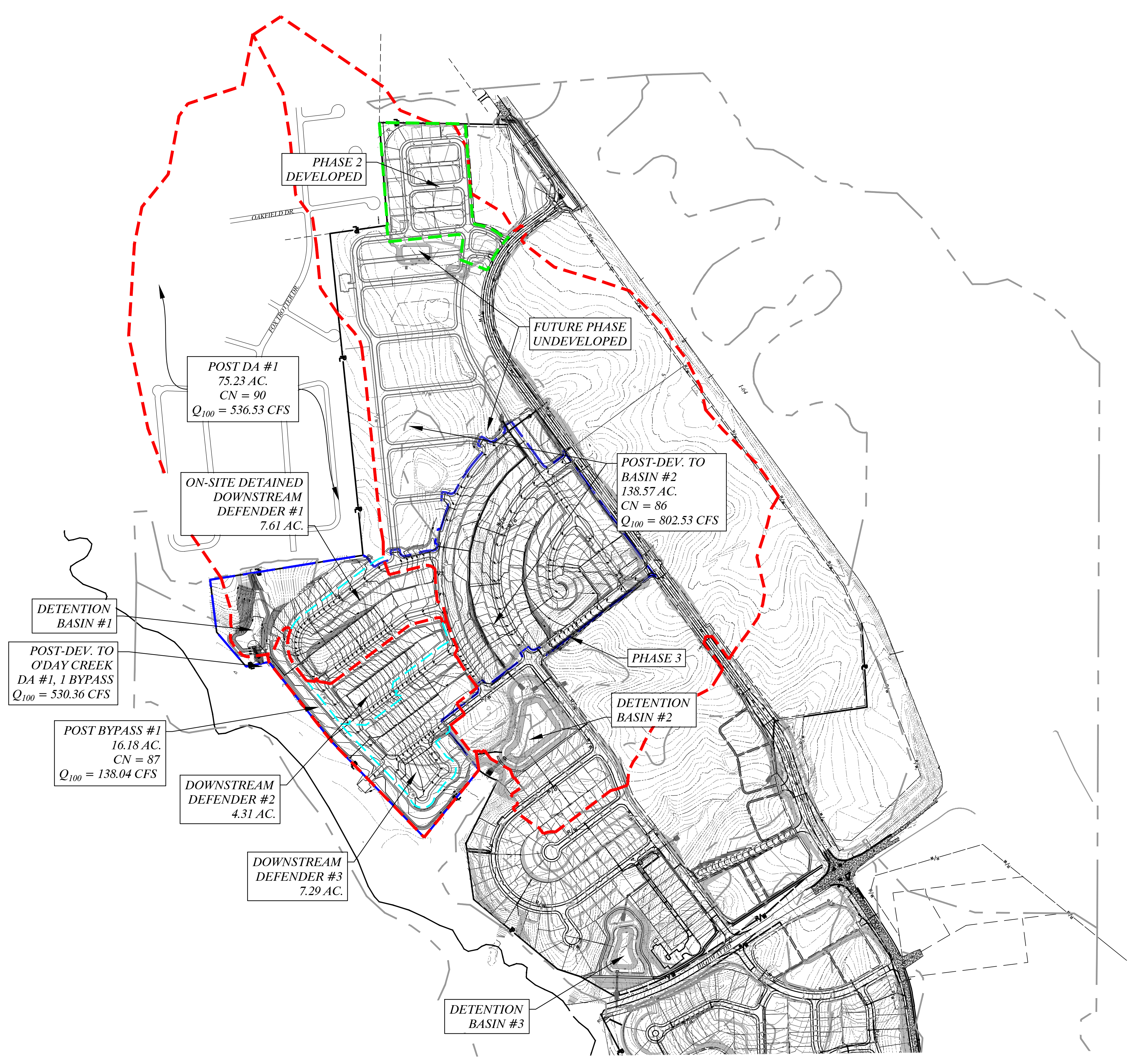
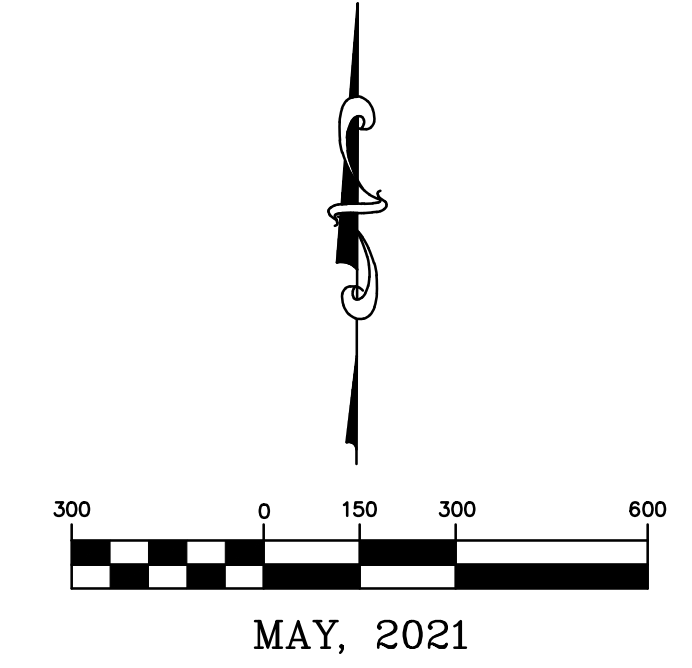


PROPOSED DRAINAGE AREA MAP

PHASE 3



Post-Developed Drainage Area #1		
	Area (Ac.)	CN
Pavement	0.0	98.0
Residential 1/8 Acre	67.1	91.8
Residential 1/4 Acre	0.0	75.0
Streets	0.0	89.0
Open Space	4.4	71.6
Row Crops	0.0	75.0
Pasture	0.0	69.0
Woods	3.7	79.0
Total	75.2	90.0
Post-Developed Drainage Area #1 Bypass		
	Area (Ac.)	CN
Pavement	0.0	98.0
Commercial	0.0	92.0
Residential 1/8 Acre	15.4	88.2
Streets	0.0	89.0
Open Space	0.8	67.5
Row Crops	0.0	75.0
Pasture	0.0	69.0
Woods	0.0	60.0
Total	16.2	87.1
Post-Dev. DA #2 Phase 3 Completion		
	Area (Ac.)	CN
Pavement	1.3	98.0
Commercial	0.7	95.0
Residential 1/8 Acre	49.2	91.5
Streets	5.6	92.8
Open Space	4.6	73.7
Row Crops	27.1	85.6
Pasture	24.2	84.0
Woods	25.8	77.7
Total	138.6	86.0

POST DA #1
75.23 AC.
CN = 90
 $Q_{100} = 536.53$ CFS

ON-SITE DETAINED
DOWNSTREAM
DEFENDER #1
7.61 AC.

POST-DEV. TO
BASIN #2
138.57 AC.
CN = 86
 $Q_{100} = 802.53$ CFS

DETENTION
BASIN #1

POST-DEV. TO
O'DAY CREEK
DA #1, 1 BYPASS
 $Q_{100} = 530.36$ CFS

POST BYPASS #1
16.18 AC.
CN = 87
 $Q_{100} = 138.04$ CFS

DOWNSTREAM
DEFENDER #2
4.31 AC.

DOWNSTREAM
DEFENDER #3
7.29 AC.

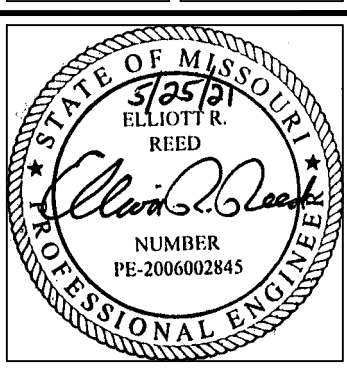
DETENTION
BASIN #3

636-584-0540 (tel.)
636-584-0512 (fax)
mail@ochran.com



Missouri State Certificate
of Authority Numbers:
Survey : 000380
Engineering : 001655
Architecture : 2002014240

Three working days prior to
the start of any excavation
work, the contractor shall
call 1-800-UGC-RTTE for utility
location information.
All OSHA rules & regulations
and state rules shall be strictly followed
during construction (e.g. trenching,
blasting, etc.).



THE STREETS OF CALEDONIA
PHASE 3 RESIDENTIAL
O'FALLON, MISSOURI

DATE	BY	APP'D. BY
	TES	ERR
DATE:	MAY 25, 2021	
SCALE:	1" = 300'	
PROJ. NO.:	17-6821	
DWG. NO.:	C8.01	

OWNER/DEVELOPER:
DD LAND DEVELOPMENT, LLC
10407 BAUR BLVD, SUITE B
ST. LOUIS, MO 63132