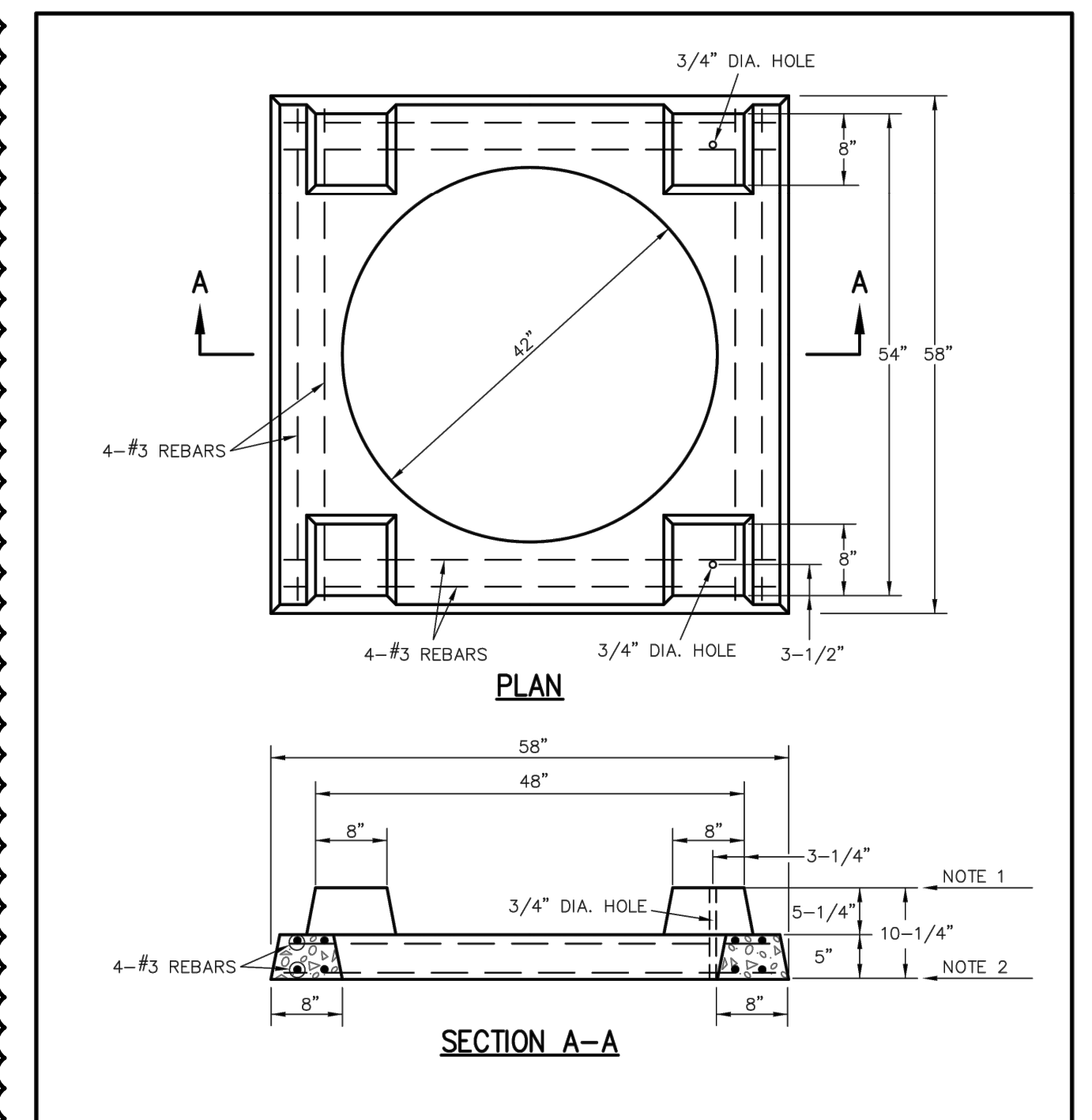
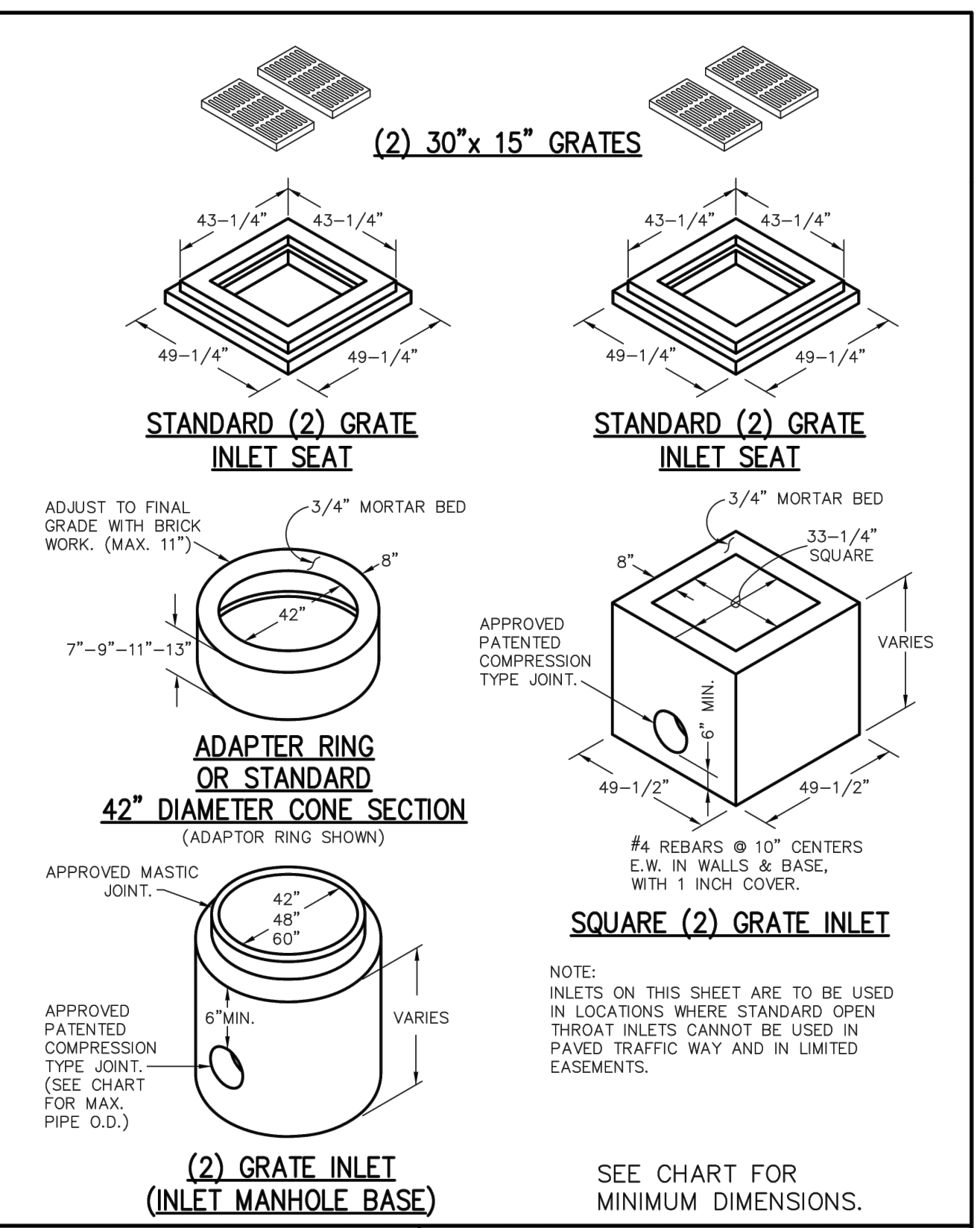


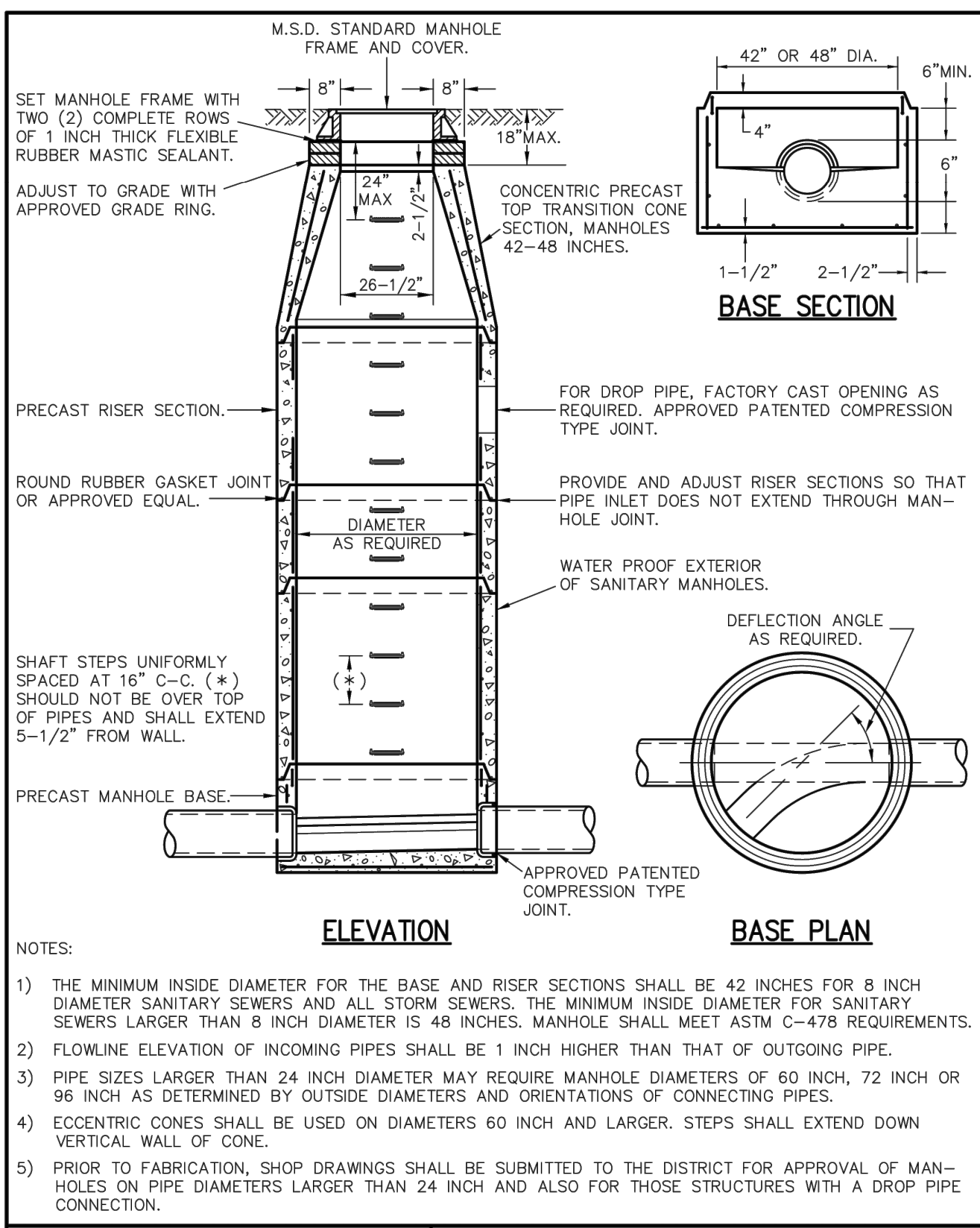
AREA INLET PRECAST CONCRETE	METROPOLITAN ST. LOUIS SEWER DISTRICT <i>Standard Details of Sewer Construction</i>
Dr. JLG/SAM Ch. J.C.K.	2009 SHEET 34



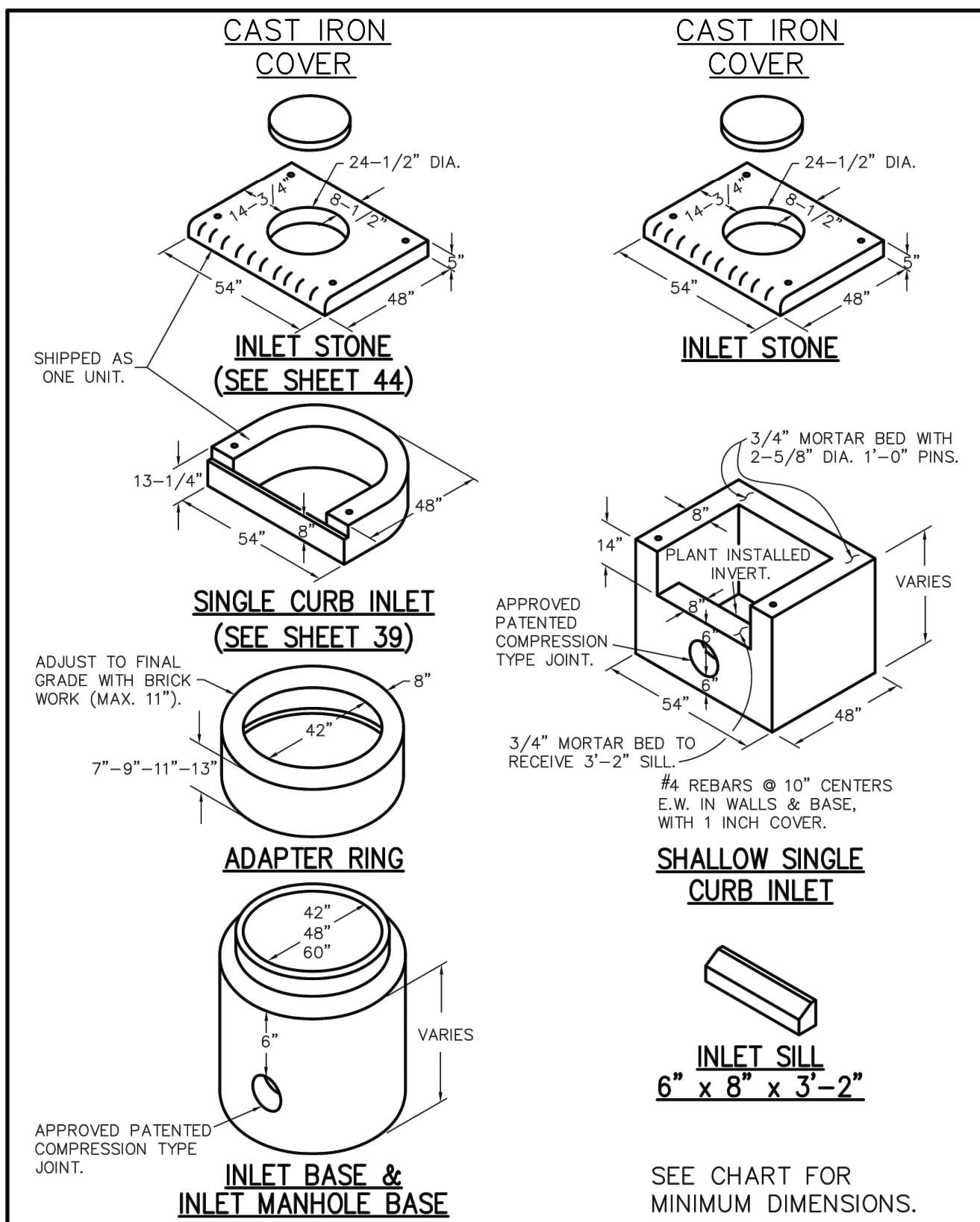
PRECAST CONCRETE UNIT FOR 4 WAY AREA INLET	METROPOLITAN ST. LOUIS SEWER DISTRICT <i>Standard Details of Sewer Construction</i>
Dr. DAB/SAM Ch. J.C.K.	2009 SHEET 40



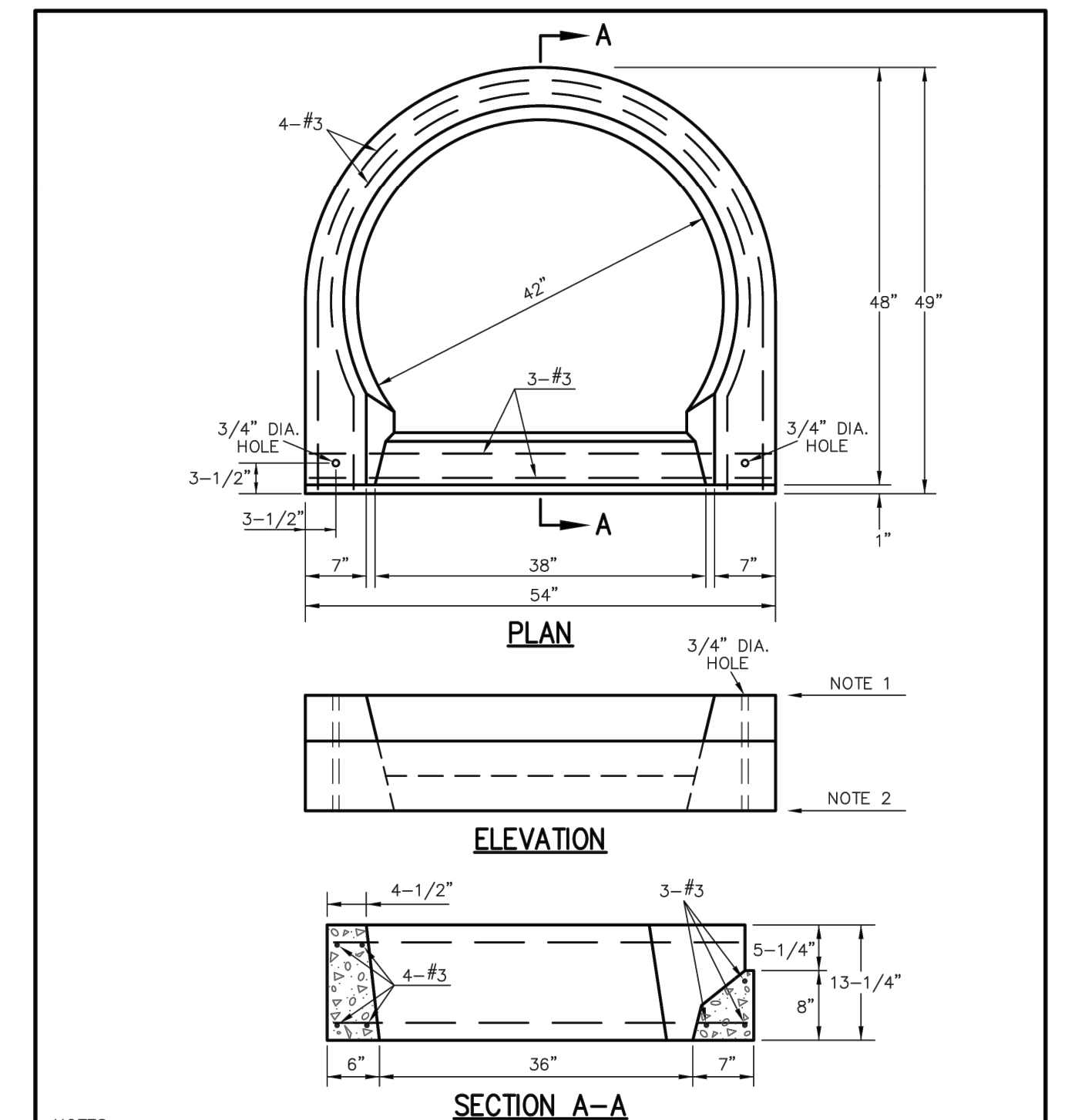
2 GRATE INLETS PRECAST CONCRETE	METROPOLITAN ST. LOUIS SEWER DISTRICT <i>Standard Details of Sewer Construction</i>
Dr. JLG/SAM Ch. J.C.K.	2009 SHEET 35



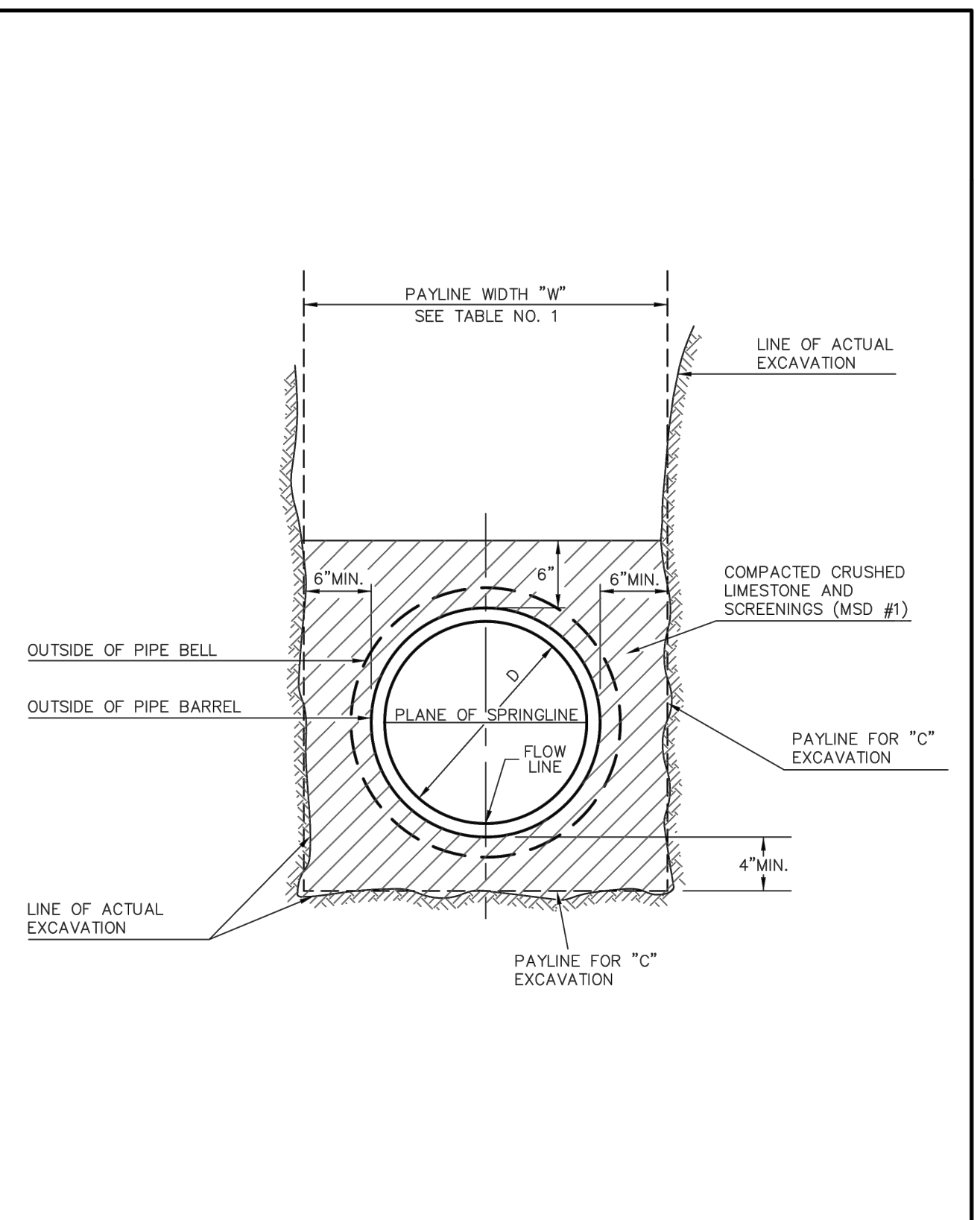
PRECAST CONCRETE MANHOLE	METROPOLITAN ST. LOUIS SEWER DISTRICT <i>Standard Details of Sewer Construction</i>
Dr. WSH/SAM Ch. J.C.K.	2009 SHEET 21 (REV)



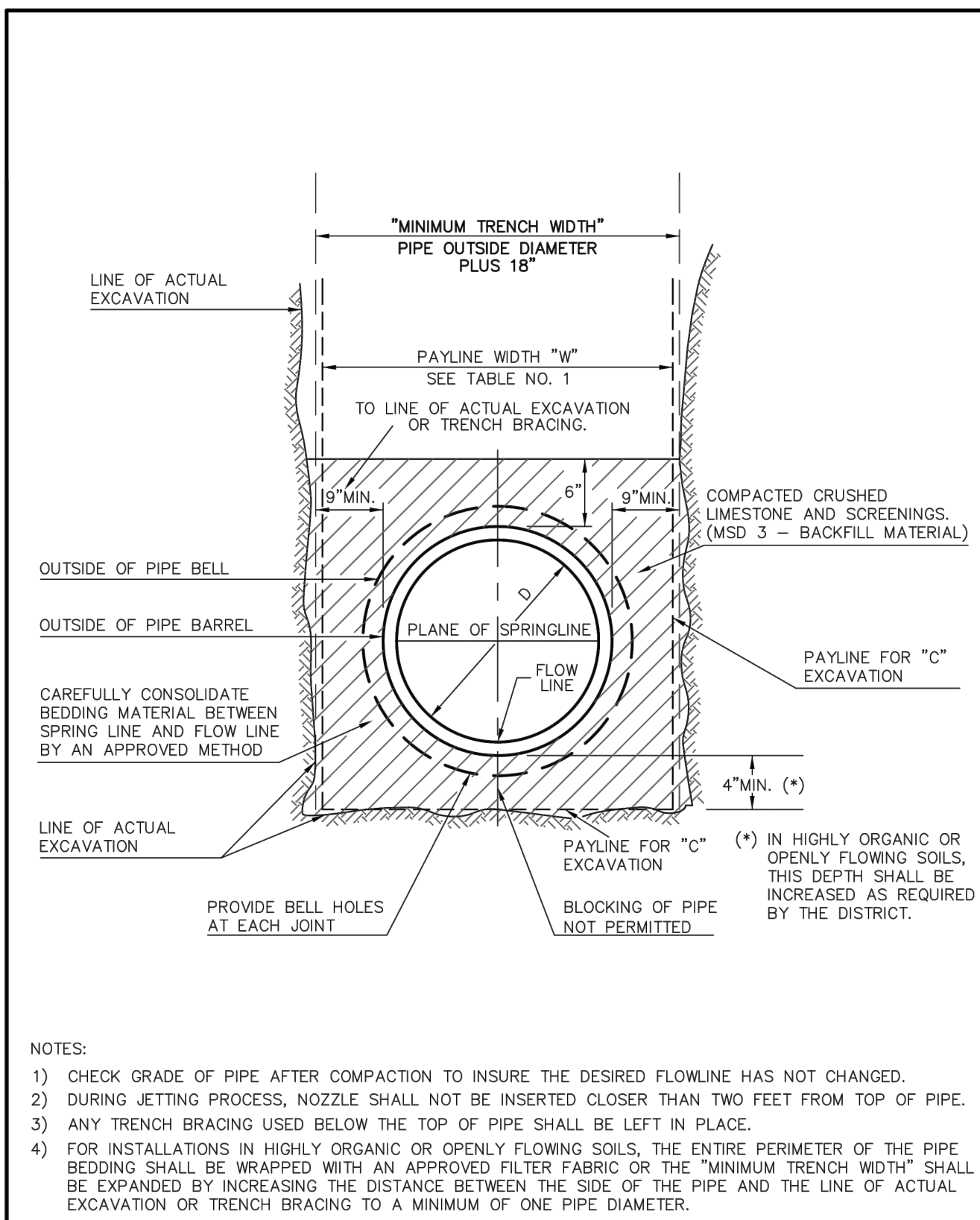
SINGLE STREET INLETS PRECAST CONCRETE	METROPOLITAN ST. LOUIS SEWER DISTRICT <i>Standard Details of Sewer Construction</i>
Dr. JLG/SAM Ch. J.C.K.	2009 SHEET 36



PRECAST CONCRETE UNIT FOR SINGLE STREET INLET	METROPOLITAN ST. LOUIS SEWER DISTRICT <i>Standard Details of Sewer Construction</i>
Dr. WSH/SAM Ch. J.C.K.	2009 SHEET 39



PIPE BEDDING CLASS "C" (FOR ALL 6" TO 18" PIPE EXCEPT REINFORCED CONCRETE PIPE)	METROPOLITAN ST. LOUIS SEWER DISTRICT <i>Standard Details of Sewer Construction</i>
Dr. W.S.H. Ch. J.C.K.	2009 SHEET 4



PIPE BEDDING FOR FLEXIBLE PIPE 21" - 48" DIAMETER	METROPOLITAN ST. LOUIS SEWER DISTRICT <i>Standard Details of Sewer Construction</i>
Dr. P.T.K. Ch. D.R.M.	2009 SHEET 6

* All other Storm or Sanitary Sewer Details will be by M.S.D. Standards and Specifications.
 ** All inlets shall have 5/8" trash bar centered with the opening(s).

636-594-0540 (tel.)
636-594-0512 (fax)
mailto:ochran@ochran.com
630A E. Independence Dr.
Union, Missouri 63084

OC HRAN
Civil Engineering
Land Surveying
Architecture
Site Development
General Consulting
Master Planning

Missouri State Certificate of Authority Numbers:
Survey: 000380
Engineering: 001655
Architecture: 2002014240

Three working days prior to the start of any excavation call 1-800-468-ARTE for utility location information.

All OSHA rules & regulations apply. Construction required by these plans shall be strictly followed (i.e. trenching, blasting, etc.).

STATE OF MISSOURI
TIMOTHY SCHOWB
Professional Engineer
NUMBER PE-201800268
7-19-22

THE STREETS OF CALEDONIA
PHASE 4 RESIDENTIAL
O'FALLON, MISSOURI

DATE: 07-13-22	REVISION: SITE CHANGE DIRECTIVE #	DATE: 07-13-22	REVISION: SITE CHANGE DIRECTIVE #
APP'D BY: JMM	APP'D BY: JMM	APP'D BY: JMM	APP'D BY: JMM
DATE: MAY 09, 2022	SCALE: NO SCALE	DATE: MAY 09, 2022	SCALE: NO SCALE
PROJ. NO: 17-6821	DRWG. NO: C14.04	PROJ. NO: 17-6821	DRWG. NO: C14.04

OWNER/DEVELOPER:
DD LAND DEVELOPMENT, LLC
10407 BAUR BLVD, SUITE B
ST. LOUIS, MO 63132

C14.04

Drawing name: F:\17-6821 - 260 Acre Tract along Hwy 40, O'Fallon, MO\AutoCad Drawings\6821 - Plan Sheets\Construction Drawings\PH4 Residential\PH4 Detail Sheet - Phase 4.dwg Plotted on: Jul 19, 2022 - 6:24am Plotted by: Jpreyer