

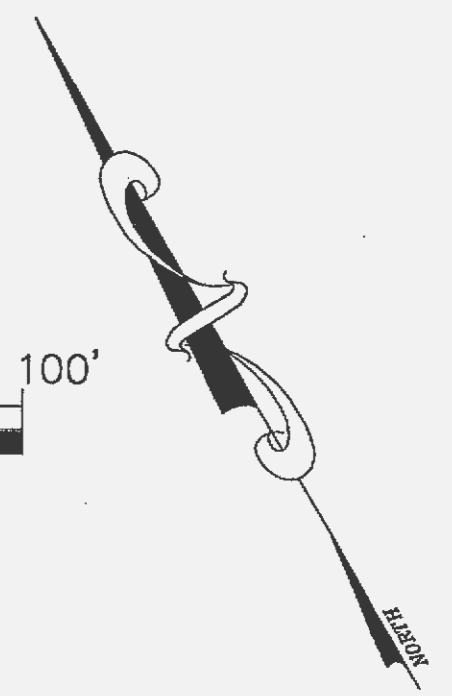
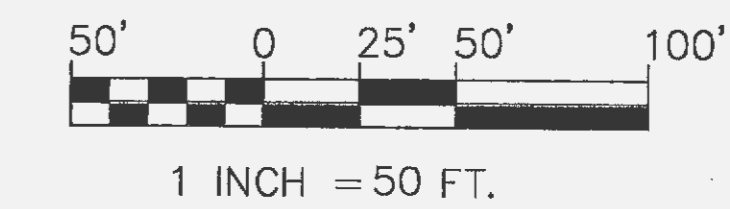
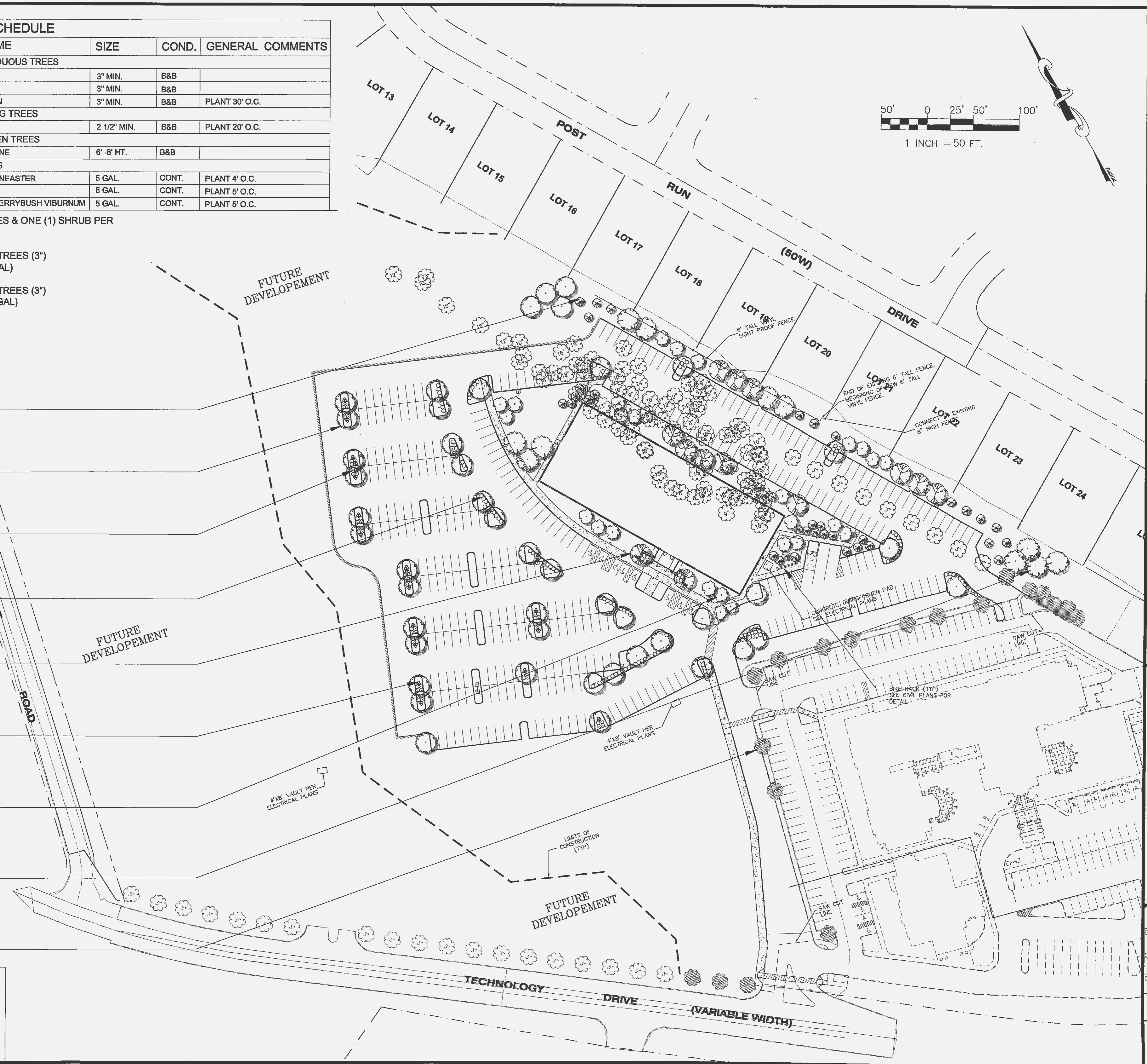
PLANTING SCHEDULE						
QTY	GENUS	SPECIES	COMMON NAME	SIZE	COND.	GENERAL COMMENTS
LARGE DECIDUOUS TREES						
46	FRAXINUS	PENNSYLVANICA	GREEN ASH	3" MIN.	B&B	
11	QUERCUS	RUBRA	RED OAK	3" MIN.	B&B	
13	TILIA	CORDATA	LITTLELEAF LINDEN	3" MIN.	B&B	PLANT 30' O.C.
FLOWERING TREES						
25	CERCIS	CANADENSIS	EASTERN REDBUD	2 1/2" MIN.	B&B	PLANT 20' O.C.
EVERGREEN TREES						
38	PINUS	STROBUS	EASTERN WHITE PINE	6' - 8' HT.	B&B	
SHRUBS						
62	COTONEASTER	APICULATUS	CRANBERRY COTONEASTER	5 GAL.	CONT.	PLANT 4' O.C.
64	SPIRAEA	THUNBERGII	THUNBERG SPIREA	5 GAL.	CONT.	PLANT 5' O.C.
154	VIBURNUM	OPULUS 'COMPACTUM'	EUROPEAN CRANBERRYBUSH VIBURNUM	5 GAL.	CONT.	PLANT 5' O.C.

REQUIRED PER ORDINANCE: MIN. OF TWO (2) DECIDUOUS TREES & ONE (1) SHRUB PER PARKING LOT ISLAND

REQUIRED: 25 ISLANDS = 50 DECIDUOUS TREES (3")  
= 25 SHRUBS (5 GAL)

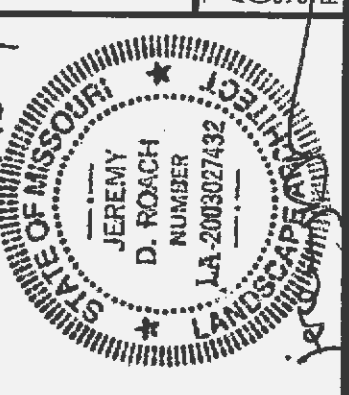
PROPOSED: 25 ISLANDS = 90 DECIDUOUS TREES (3")  
= 258 SHRUBS (5 GAL)  
TOTAL TREES = 133  
TOTAL SHRUBS = 280

- PINUS STROBUS (TYP.)
- FRAXINUS PENNSYLVANICA (TYP.)
- SPIRAEA THUNBERGII (TYP.)
- VIBURNUM DENTATUM (TYP.)
- TILIA CORDATA (TYP.)
- COTONEASTER APICULATUS (TYP.)
- CERCIS CANADENSIS (TYP.)
- QUERCUS RUBRA (TYP.)
- EXISTING TREE TO REMAIN (TYP.)



DATE	DESC.	BY
7/19/2006	FINAL CITY COMMENTS	
8/27/2006	OWNER COMMENTS	
11/17/2007	OWNER COMMENTS	

DEVELOPER/OWNER:  
**MC EAGLE PROPERTIES, LLC**  
 1001 BOARDWALK SPRINGS PLACE  
 O'FALLON, MO 63366  
 (636) 561-9300



**SUMMIT PLACE I**  
 TECHNOLOGY DRIVE AND POST ROAD  
 O'FALLON, MISSOURI  
 LANDSCAPE PLAN

planning • engineering • surveying • landscape architecture  
**Cole**  
 and ASSOCIATES  
 INCORPORATED  
 10777 sunset office dr. suite 10  
 saint louis, missouri 63127  
 p: 314 984 9887 f: 314 984 0687

DESIGNED BY: JCH  
 DRAWN BY: RTH  
 CHECKED BY: JDR  
 DATE: 08/23/2006  
 Job Number: **06-123**  
 Sheet Number: **L1.0**

L:\PROJECTS\06-123 SUMMIT PLACE I\04\_LANDSCAPE PLAN\06-123 LANDSCAPE PLAN.dwg  
 08/23/2006 10:45:12 AM JCH  
 PLOT: 08/23/2006 10:45:12 AM JCH