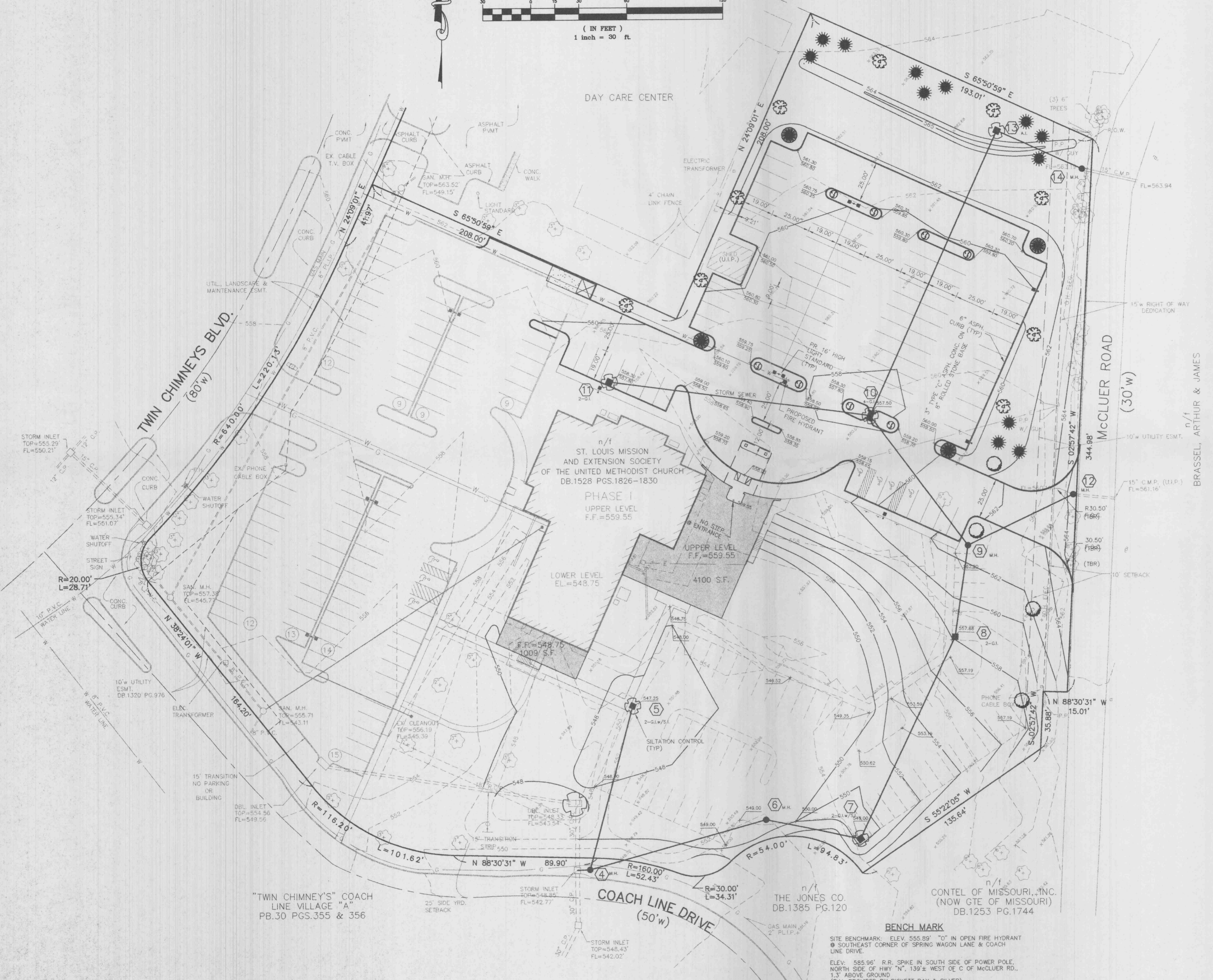
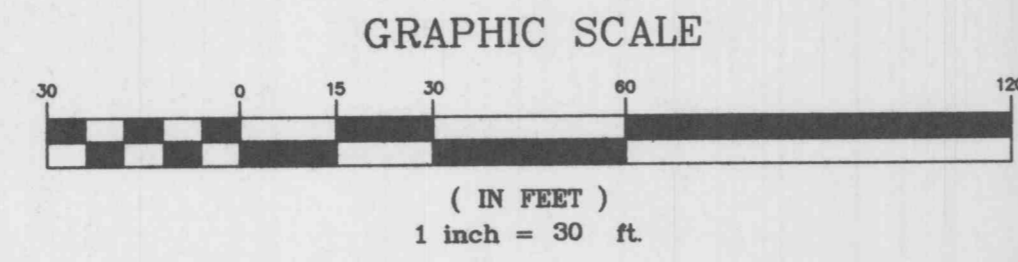
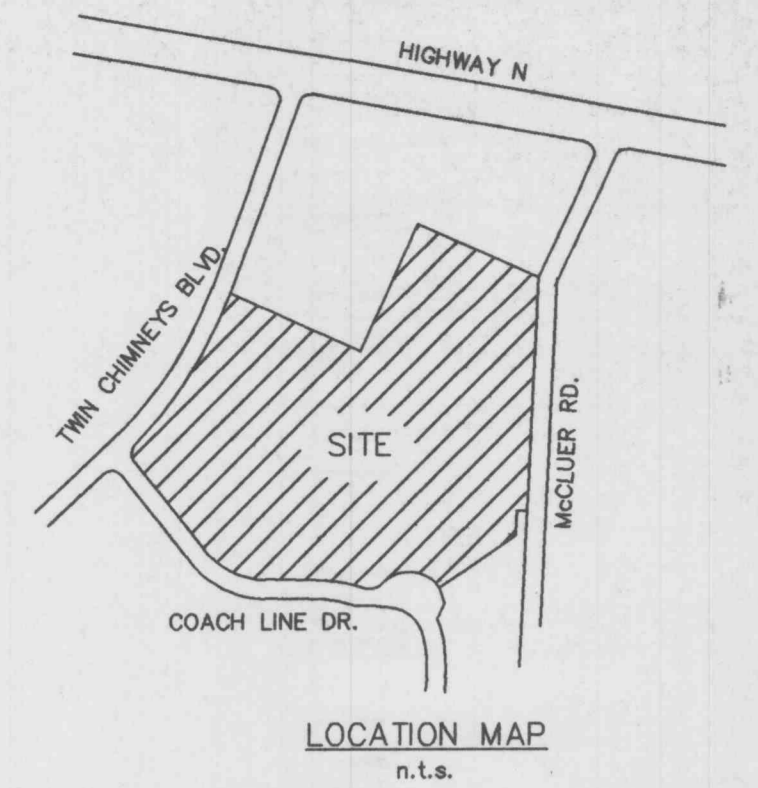


# SITE DEVELOPMENT PLAN

A TRACT OF LAND BEING PART OF FRACTIONAL SECTION 8,  
TOWNSHIP 46 NORTH, RANGE 3 EAST, OF THE FIFTH PRINCIPAL MERIDIAN,  
ST. CHARLES COUNTY, MISSOURI



LANDSCAPING CALCULATIONS:  
ONE TREE FOR EVERY (40) FORTY FEET OF STREET FRONTAGE AND ONE TREE FOR EVERY 4,000 S.F. OF LANDSCAPED OPEN SPACE. (ART. 23.04.B.3)

STREET FRONTAGE (McCLUER ROAD) = 381' = 10 TREES REQUIRED  
LANDSCAPED OPEN SPACE (PHASE I) = 25,962 S.F.± = 7 TREES REQUIRED  
TOTAL TREES REQUIRED = 17 TREES  
TOTAL TREES PROVIDED = 29 TREES

## LANDSCAPE LEGEND

SYMBOL	QUANTITY	NAME	SIZE
○	4	GREENSPIRE LINDEN	3-3 1/2"
⊗	9	RED SUNSET MAPLE	3-3 1/2"
●	4	SUMMIT ASH	3-3 1/2"
⊙	12	WHITE PINE	8'-10'
⊗	8	ANDORA JUNIPER UPRIGHT JUNIPER YEW	

NOTE: ALL LANDSCAPED AREAS TO BE SEEDED.

SUNRISE UNITED METHODIST CHURCH  
LANDSCAPE PLAN

**STOCK & ASSOCIATES CONSULTING ENGINEERS, INC.**

425 NORTH NEW BALLAS ROAD  
SUITE 185  
ST. LOUIS, MO. 63141  
PH. (314) 432-8100  
FAX (314) 432-8171  
e-mail: general@stockassoc.com

DRAWN BY:	DATE:	CHECKED BY:	DATE:	JOB NUMBER:	SHEET:
D.B.	09/17/98	G.S.	09/17/98	98-1633	C2 of 3

P:\DPM\1600\981533\SDP-2-LAND.DWG Thu Sep 17 10:57:22 1998