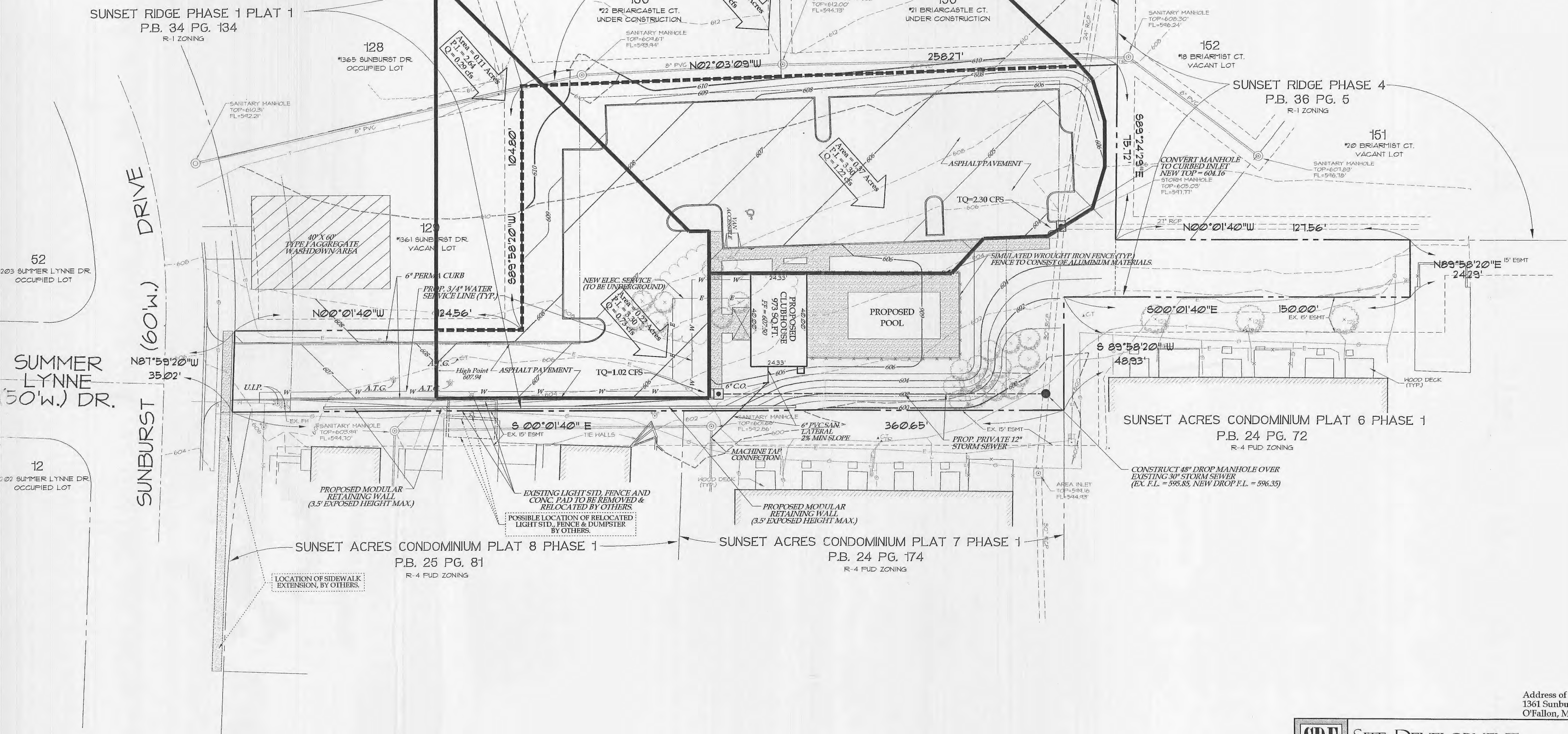
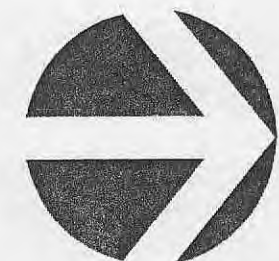


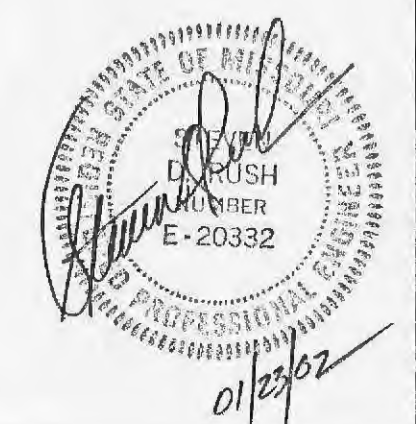
COMMON GROUND OF SUNSET RIDGE ESTATES PHASE I PLAT 1 & PHASE 4,
PART OF SECTION 36, TOWNSHIP 47 NORTH, RANGE 2 EAST,
AS RECORDED IN PLAT BOOK 34, PAGE 134 AND PLAT BOOK 36, PAGE 5,
CITY OF O'FALLON, ST. CHARLES COUNTY, MISSOURI



CAUTION!!!
CONTRACTOR SHALL EXERCISE EXTREME CAUTION DURING EXCAVATION OPERATIONS TO AVOID AND PROTECT EXISTING UNDERGROUND UTILITIES.

The underground utilities shown herein were plotted from available information and do not necessarily reflect the actual existence, nonexistence, size, type, number, or location of these or other utilities. The general contractor shall be responsible for verifying the actual location of all underground utilities, shown or not shown, and said utilities shall be located in the field prior to any grading, excavation, or construction of improvements. These provisions shall in no way absolve any party from complying with the Underground Facility Safety and Damage Prevention Act, Chapter 319, RSMo.

NOTE : THIS PLAN IS FOR THE CALCULATION OF DRAINAGE AREAS ONLY, AND IS NOT TO BE USED AS A CONSTRUCTION PLAN!!!!



SDE
SITE DEVELOPMENT ENGINEERING, INC.
PLANNING • SURVEYING • CIVIL ENGINEERING

12221 Big Bend Road
St. Louis, Missouri 63122
314-822-4800
Fax 314-822-9268

Common Ground Amenities at Sunset Ridge Estates

DATE: July 25, 2001
CHECKED BY: SDR

DRAWN BY: JJA
JOB NO.: 201-023
SCALE: 1" = 20'

DRAINAGE AREA MAP

REV.: December 18, 2001 City of O'Fallon Comments
January 4, 2002 City of O'Fallon Comments
January 23, 2002 City of O'Fallon Comments

SHEET: C9

Address of Site:
1361 Sunburst Drive
O'Fallon, MO 63366