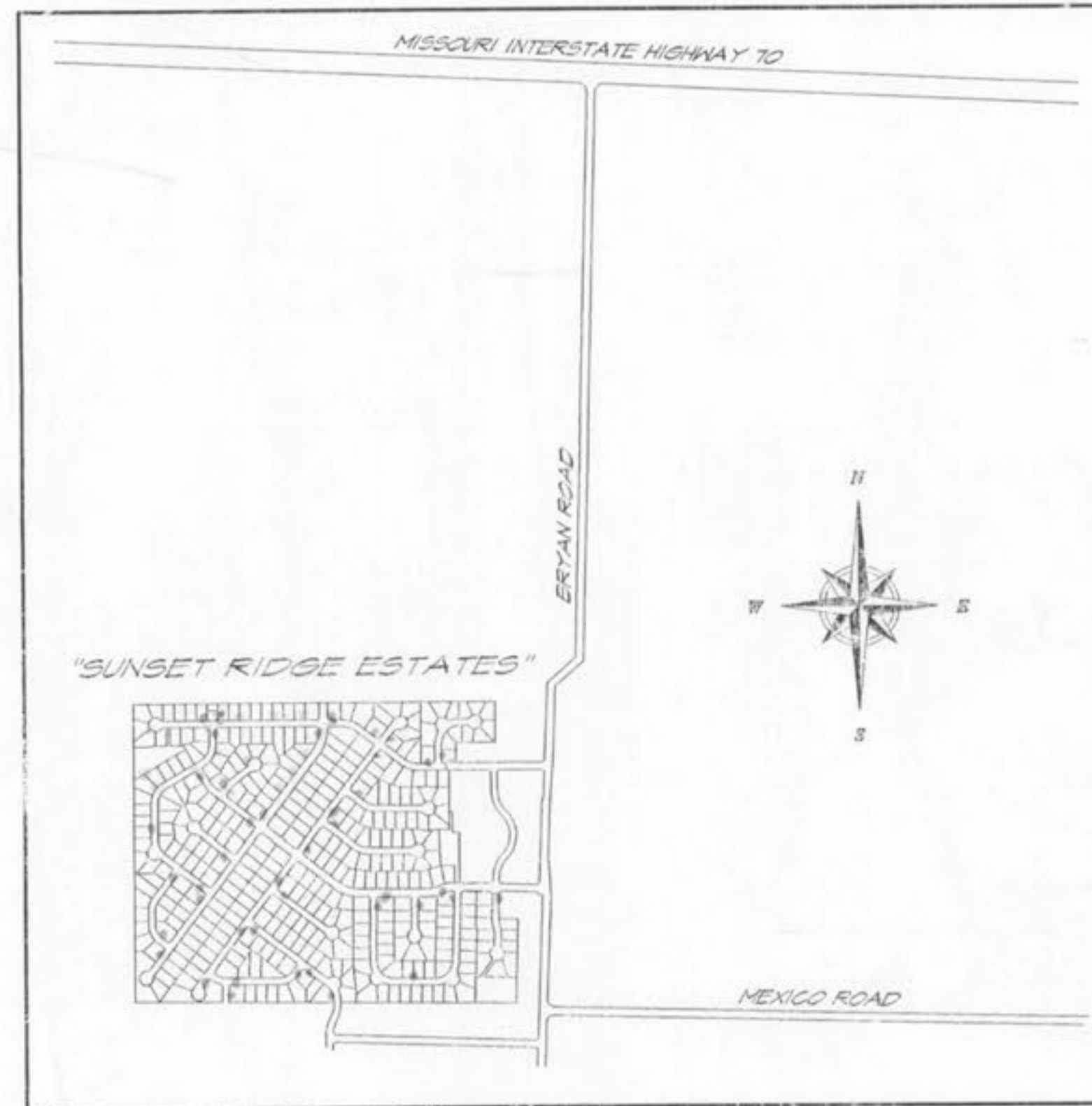


SUNSET RIDGE ESTATES

A TRACT OF LAND BEING PART OF
SECTION 36, TOWNSHIP 47 NORTH, RANGE 2 EAST,
CITY OF O'FALLON, ST. CHARLES COUNTY, MISSOURI

IMPROVEMENT PLANS



LOCATION MAP
(NTS)

PREPARED FOR:

NOTHUM HOMES, INC.

GLENN NOTHUM
7321 S. LINDBERGH
SUITE 310
ST. LOUIS, MISSOURI 63125
(314) 894-7768

CIVIL ENGINEER:

SITE DEVELOPMENT ENGINEERING, INC.

4400 SOUTH LINDBERGH BOULEVARD - SUITE 5
ST. LOUIS, MISSOURI 63127
PHONE (314) 849-7900

Sunset Ridge

File Copy
APPROVED

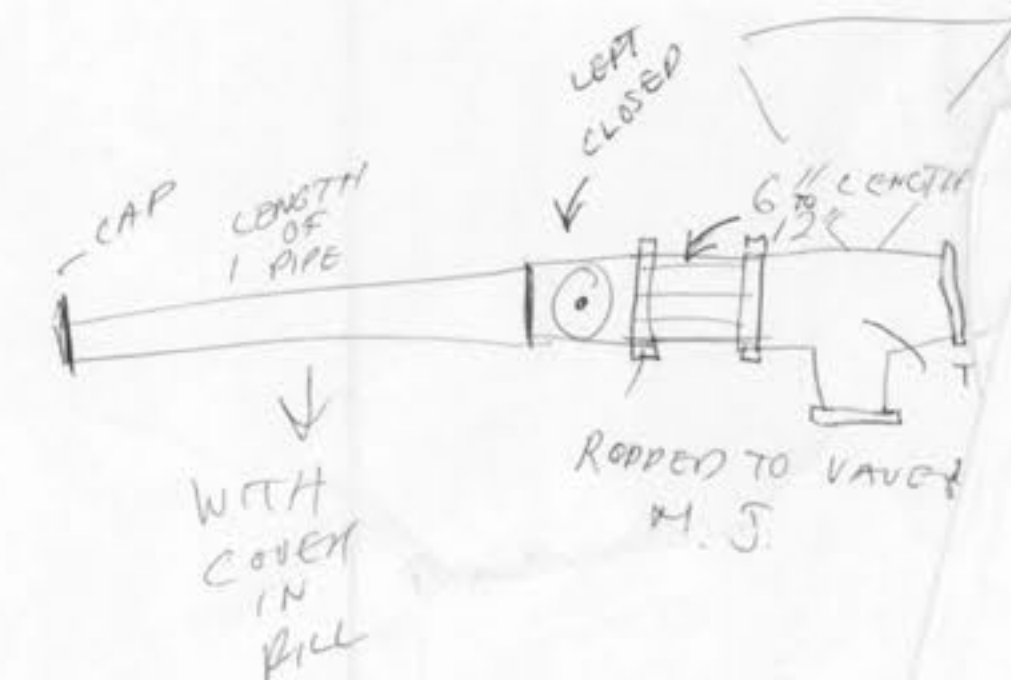
Contingent upon:

1. Moving the water valve in front of Lot 268 to the other side of the tee near Lot 267,
2. Providing rip-rap with energy dissipaters at FE 1, FE 350, + FE 150, and
3. Changing the pipe size from 115 to 107 from 21" to 24" RCP.

12/20/96

Colleen Kramme

~~Approved with a~~
~~color line~~



Streetlights

SITE DEVELOPMENT ENGINEERING, INC. <small>1400 SOUTH LINDBERGH BLVD. - SUITE 5, ST. LOUIS, MISSOURI</small>	
SUNSET RIDGE ESTATES	
DATE: 1-10-96 DESIGN: JOY	JOB NO.: 95-541
TITLE SHEET	
<small>REF: 4-24-95 per CITY OF O'FALLON 8-30-85 per CITY OF O'FALLON 10-23-85 per CITY OF O'FALLON</small>	

