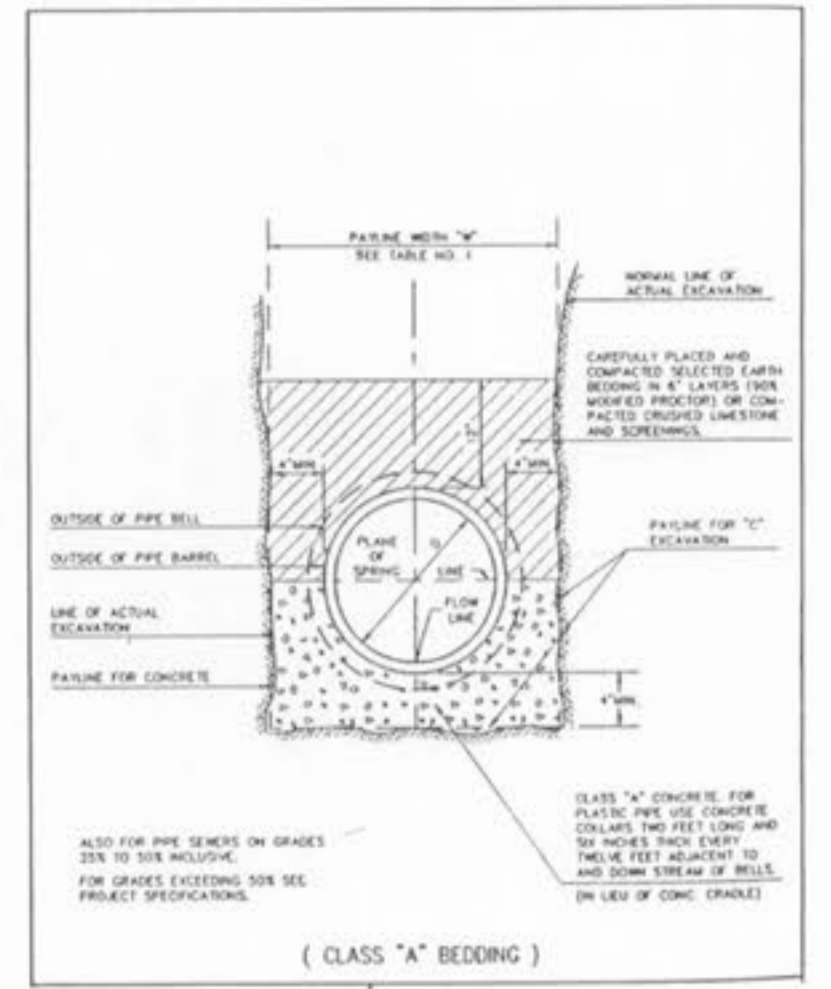
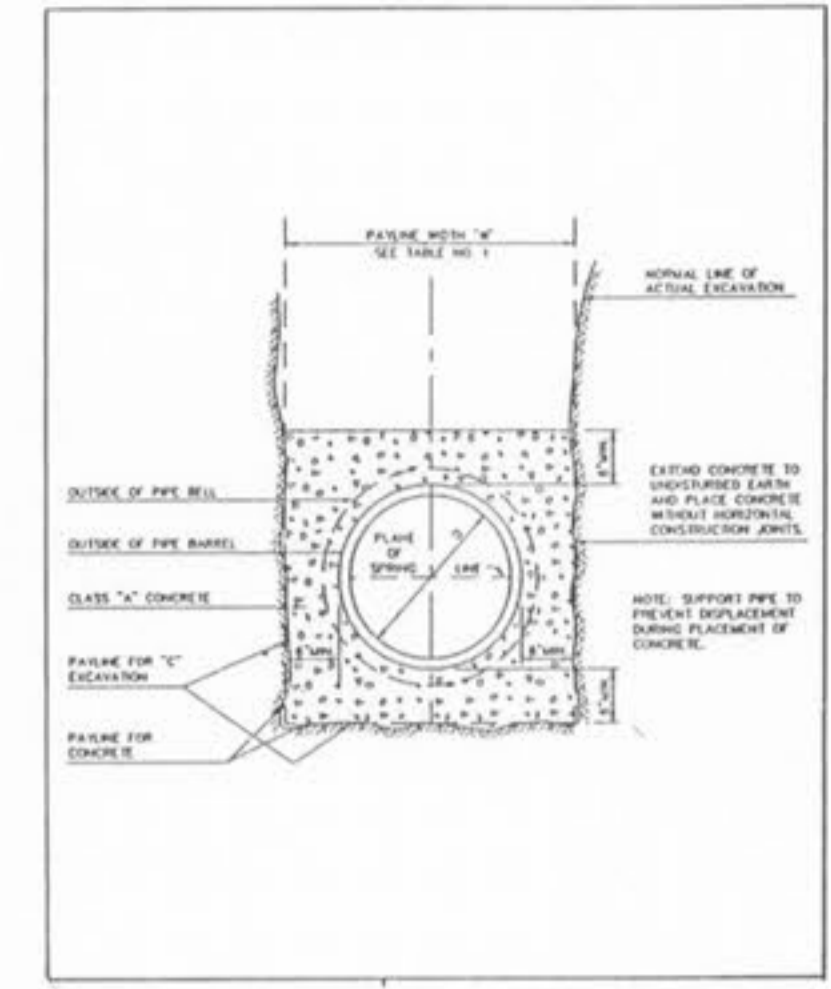


| ROUND PIPE | | | | HORIZONTAL ELLIPTICAL PIPE | | | |
|-------------|-------------------------------|-----------------------------|----------------------------|-------------------------------|-----------------------------|----------------------------|-----------------------------------|
| PIPE NUMBER | PIPE WIDTH OF TRENCH (INCHES) | PIPE WIDTH OF TRENCH (FEET) | PAVING ENCASEMENT (INCHES) | PIPE WIDTH OF TRENCH (INCHES) | PIPE WIDTH OF TRENCH (FEET) | PAVING ENCASEMENT (INCHES) | REMARKS TO BE NOTED BY CONTRACTOR |
| 1 | 30 | 3.00 | 3.00 | | | | |
| 2 | 30 | 3.00 | 3.00 | | | | |
| 3 | 30 | 3.00 | 3.00 | | | | |
| 4 | 30 | 3.00 | 3.00 | | | | |
| 5 | 30 | 3.00 | 3.00 | | | | |
| 6 | 30 | 3.00 | 3.00 | | | | |
| 7 | 30 | 3.00 | 3.00 | | | | |
| 8 | 30 | 3.00 | 3.00 | | | | |
| 9 | 30 | 3.00 | 3.00 | | | | |
| 10 | 30 | 3.00 | 3.00 | | | | |
| 11 | 30 | 3.00 | 3.00 | | | | |
| 12 | 30 | 3.00 | 3.00 | | | | |
| 13 | 30 | 3.00 | 3.00 | | | | |
| 14 | 30 | 3.00 | 3.00 | | | | |
| 15 | 30 | 3.00 | 3.00 | | | | |
| 16 | 30 | 3.00 | 3.00 | | | | |
| 17 | 30 | 3.00 | 3.00 | | | | |
| 18 | 30 | 3.00 | 3.00 | | | | |
| 19 | 30 | 3.00 | 3.00 | | | | |
| 20 | 30 | 3.00 | 3.00 | | | | |
| 21 | 30 | 3.00 | 3.00 | | | | |
| 22 | 30 | 3.00 | 3.00 | | | | |
| 23 | 30 | 3.00 | 3.00 | | | | |
| 24 | 30 | 3.00 | 3.00 | | | | |
| 25 | 30 | 3.00 | 3.00 | | | | |
| 26 | 30 | 3.00 | 3.00 | | | | |
| 27 | 30 | 3.00 | 3.00 | | | | |
| 28 | 30 | 3.00 | 3.00 | | | | |
| 29 | 30 | 3.00 | 3.00 | | | | |
| 30 | 30 | 3.00 | 3.00 | | | | |
| 31 | 30 | 3.00 | 3.00 | | | | |
| 32 | 30 | 3.00 | 3.00 | | | | |
| 33 | 30 | 3.00 | 3.00 | | | | |
| 34 | 30 | 3.00 | 3.00 | | | | |
| 35 | 30 | 3.00 | 3.00 | | | | |
| 36 | 30 | 3.00 | 3.00 | | | | |
| 37 | 30 | 3.00 | 3.00 | | | | |
| 38 | 30 | 3.00 | 3.00 | | | | |
| 39 | 30 | 3.00 | 3.00 | | | | |
| 40 | 30 | 3.00 | 3.00 | | | | |
| 41 | 30 | 3.00 | 3.00 | | | | |
| 42 | 30 | 3.00 | 3.00 | | | | |
| 43 | 30 | 3.00 | 3.00 | | | | |
| 44 | 30 | 3.00 | 3.00 | | | | |
| 45 | 30 | 3.00 | 3.00 | | | | |
| 46 | 30 | 3.00 | 3.00 | | | | |
| 47 | 30 | 3.00 | 3.00 | | | | |
| 48 | 30 | 3.00 | 3.00 | | | | |
| 49 | 30 | 3.00 | 3.00 | | | | |
| 50 | 30 | 3.00 | 3.00 | | | | |
| 51 | 30 | 3.00 | 3.00 | | | | |
| 52 | 30 | 3.00 | 3.00 | | | | |
| 53 | 30 | 3.00 | 3.00 | | | | |
| 54 | 30 | 3.00 | 3.00 | | | | |
| 55 | 30 | 3.00 | 3.00 | | | | |
| 56 | 30 | 3.00 | 3.00 | | | | |
| 57 | 30 | 3.00 | 3.00 | | | | |
| 58 | 30 | 3.00 | 3.00 | | | | |
| 59 | 30 | 3.00 | 3.00 | | | | |
| 60 | 30 | 3.00 | 3.00 | | | | |
| 61 | 30 | 3.00 | 3.00 | | | | |
| 62 | 30 | 3.00 | 3.00 | | | | |
| 63 | 30 | 3.00 | 3.00 | | | | |
| 64 | 30 | 3.00 | 3.00 | | | | |
| 65 | 30 | 3.00 | 3.00 | | | | |
| 66 | 30 | 3.00 | 3.00 | | | | |
| 67 | 30 | 3.00 | 3.00 | | | | |
| 68 | 30 | 3.00 | 3.00 | | | | |
| 69 | 30 | 3.00 | 3.00 | | | | |
| 70 | 30 | 3.00 | 3.00 | | | | |
| 71 | 30 | 3.00 | 3.00 | | | | |
| 72 | 30 | 3.00 | 3.00 | | | | |
| 73 | 30 | 3.00 | 3.00 | | | | |
| 74 | 30 | 3.00 | 3.00 | | | | |
| 75 | 30 | 3.00 | 3.00 | | | | |
| 76 | 30 | 3.00 | 3.00 | | | | |
| 77 | 30 | 3.00 | 3.00 | | | | |
| 78 | 30 | 3.00 | 3.00 | | | | |
| 79 | 30 | 3.00 | 3.00 | | | | |
| 80 | 30 | 3.00 | 3.00 | | | | |
| 81 | 30 | 3.00 | 3.00 | | | | |
| 82 | 30 | 3.00 | 3.00 | | | | |
| 83 | 30 | 3.00 | 3.00 | | | | |
| 84 | 30 | 3.00 | 3.00 | | | | |
| 85 | 30 | 3.00 | 3.00 | | | | |
| 86 | 30 | 3.00 | 3.00 | | | | |
| 87 | 30 | 3.00 | 3.00 | | | | |
| 88 | 30 | 3.00 | 3.00 | | | | |
| 89 | 30 | 3.00 | 3.00 | | | | |
| 90 | 30 | 3.00 | 3.00 | | | | |
| 91 | 30 | 3.00 | 3.00 | | | | |
| 92 | 30 | 3.00 | 3.00 | | | | |
| 93 | 30 | 3.00 | 3.00 | | | | |
| 94 | 30 | 3.00 | 3.00 | | | | |
| 95 | 30 | 3.00 | 3.00 | | | | |
| 96 | 30 | 3.00 | 3.00 | | | | |
| 97 | 30 | 3.00 | 3.00 | | | | |
| 98 | 30 | 3.00 | 3.00 | | | | |
| 99 | 30 | 3.00 | 3.00 | | | | |
| 100 | 30 | 3.00 | 3.00 | | | | |

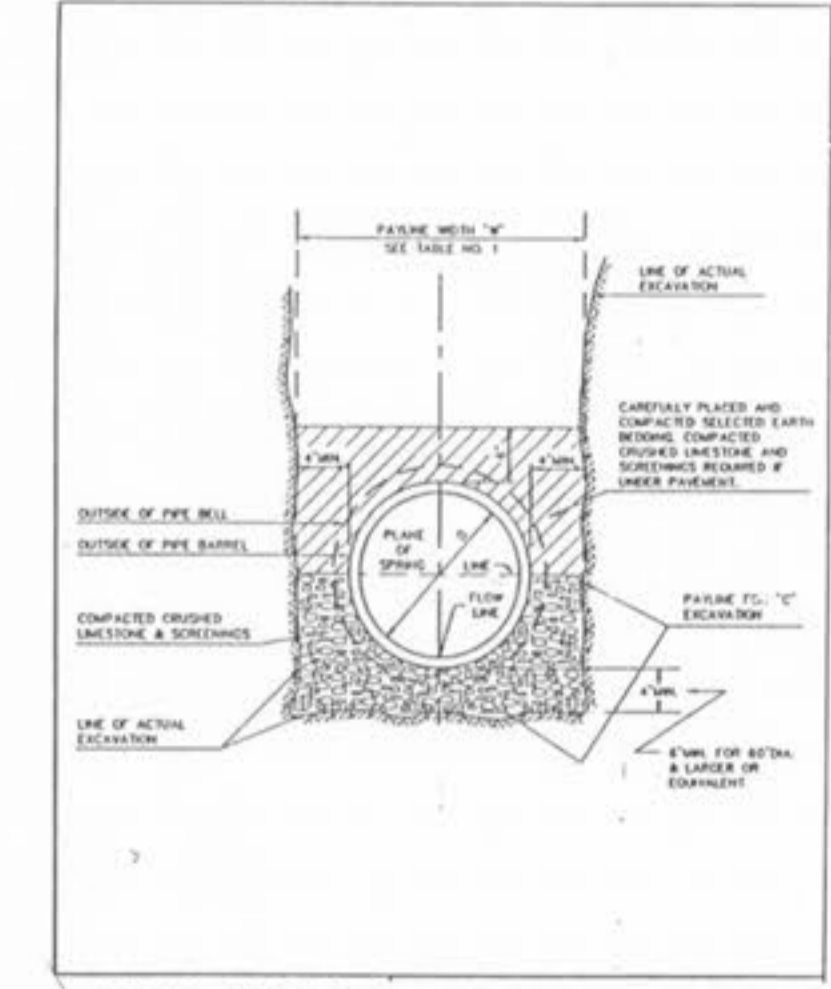
TABLE 1
PAYLINE WIDTHS OF TRENCH
AND PAY-QUANTITIES
OF CONCRETE



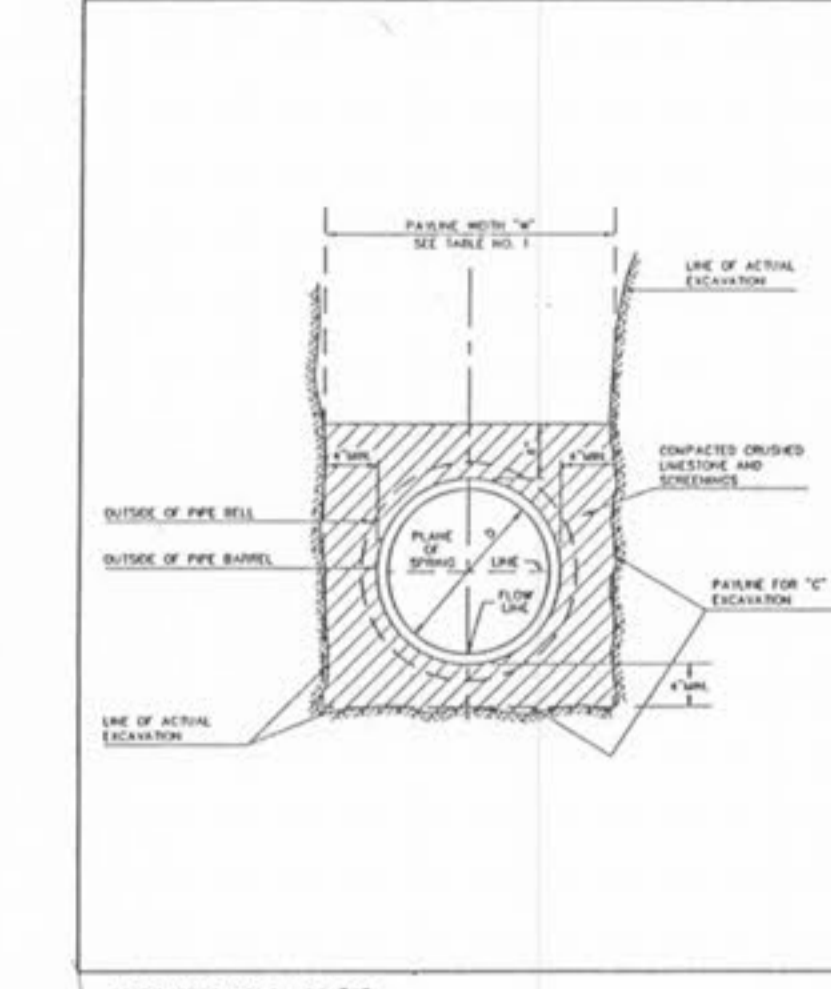
CONCRETE GRADE
(CLASS "A" BEDDING)



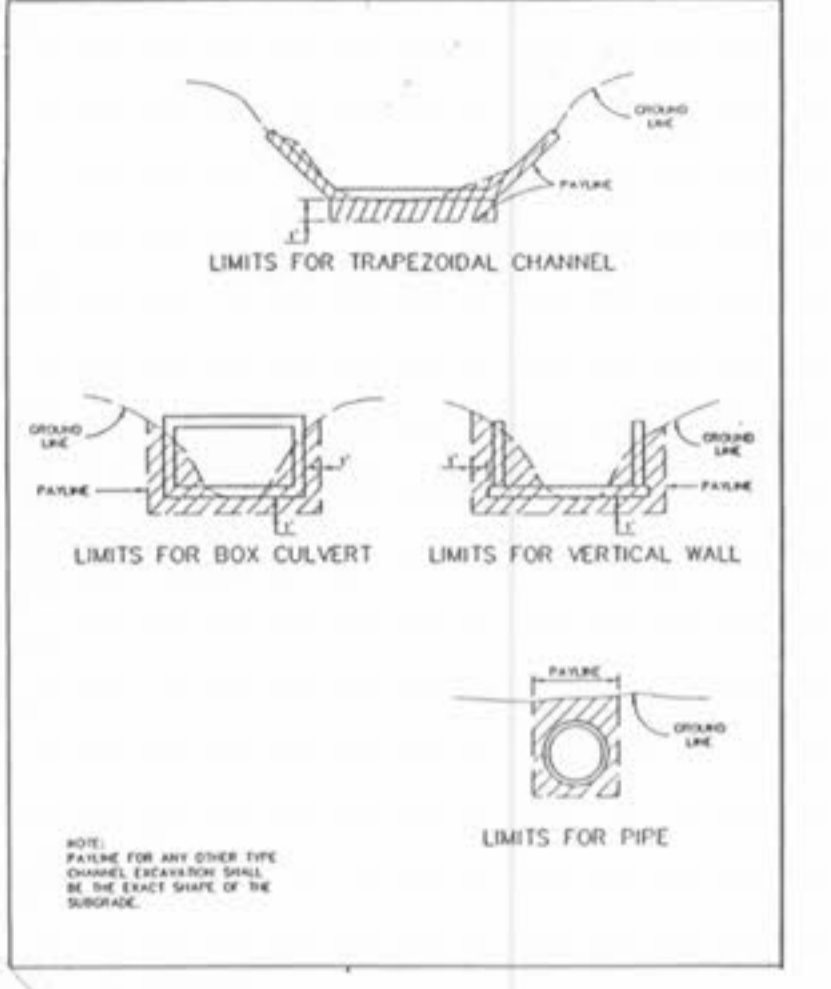
CONCRETE ENCASUREMENT



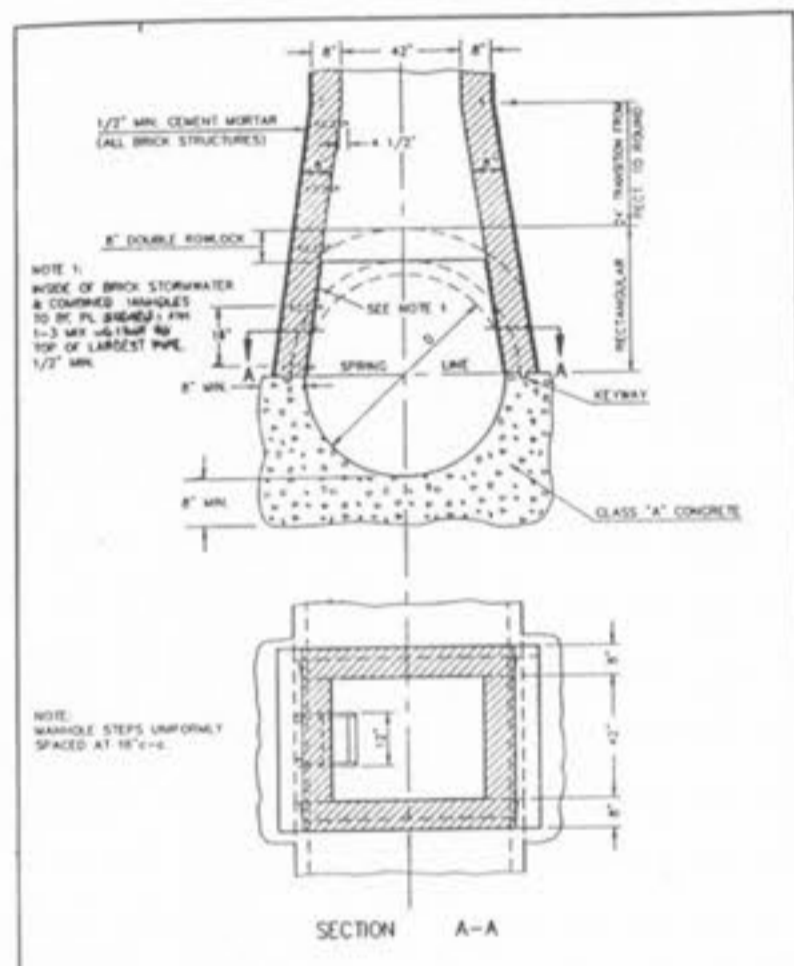
PIPE BEDDING CLASS "C"
(MODIFIED FOR REINFORCED
CONCRETE PIPE)



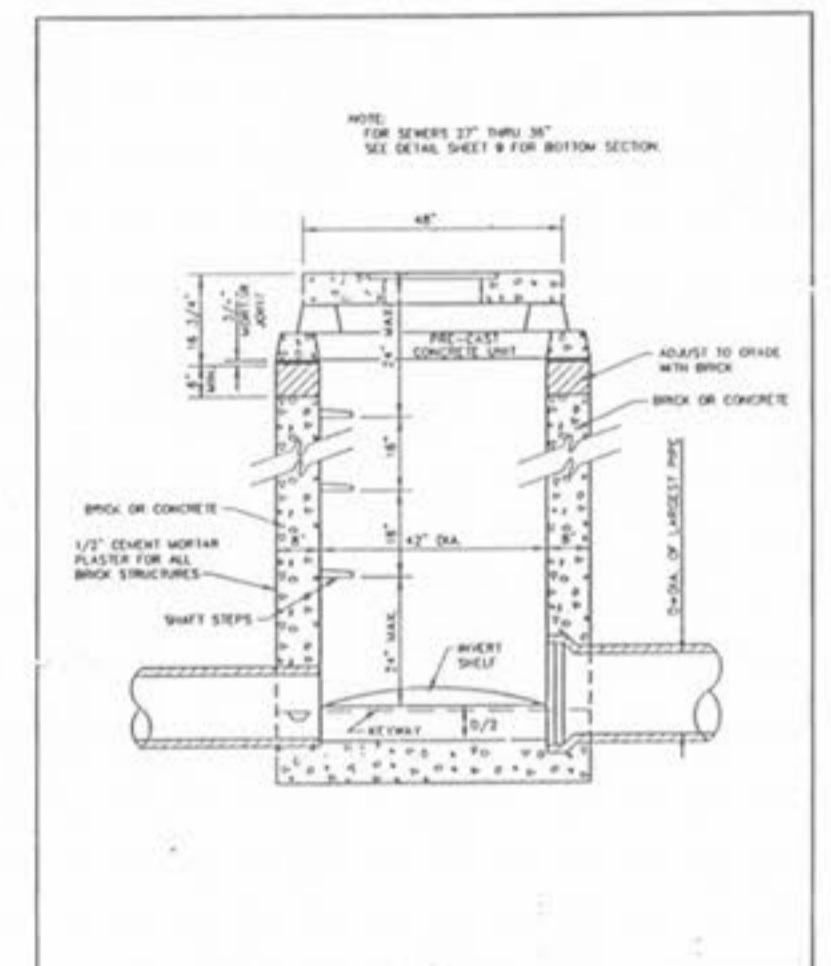
PIPE BEDDING CLASS "C"
(FOR ALL PIPE EXCEPT
REINFORCED CONCRETE PIPE)



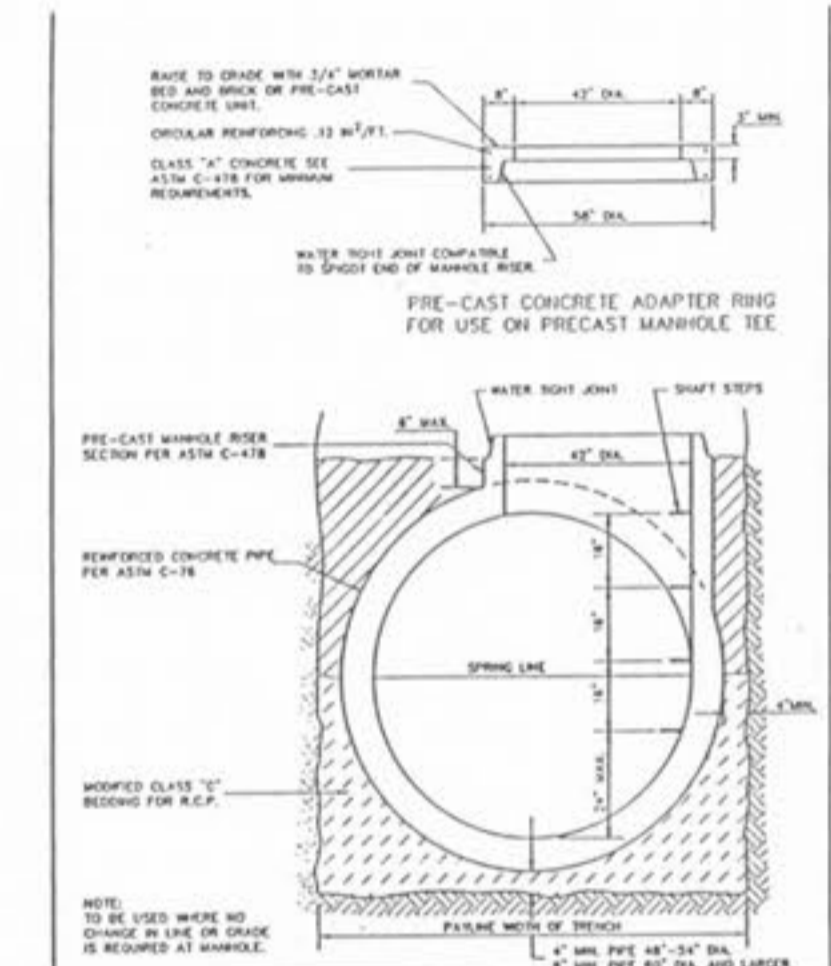
PAYLINE LIMITS
FOR EXCAVATION



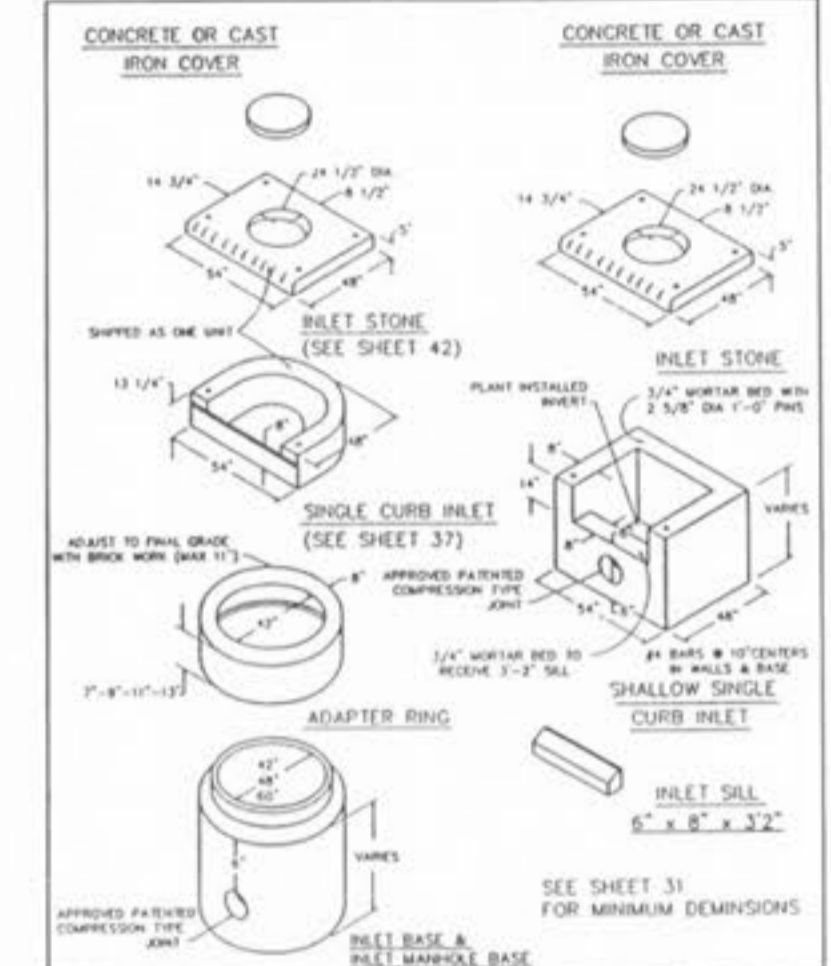
MANHOLE ON CONCRETE PIPE
SEWERS 39" THRU 54" DIAMETER



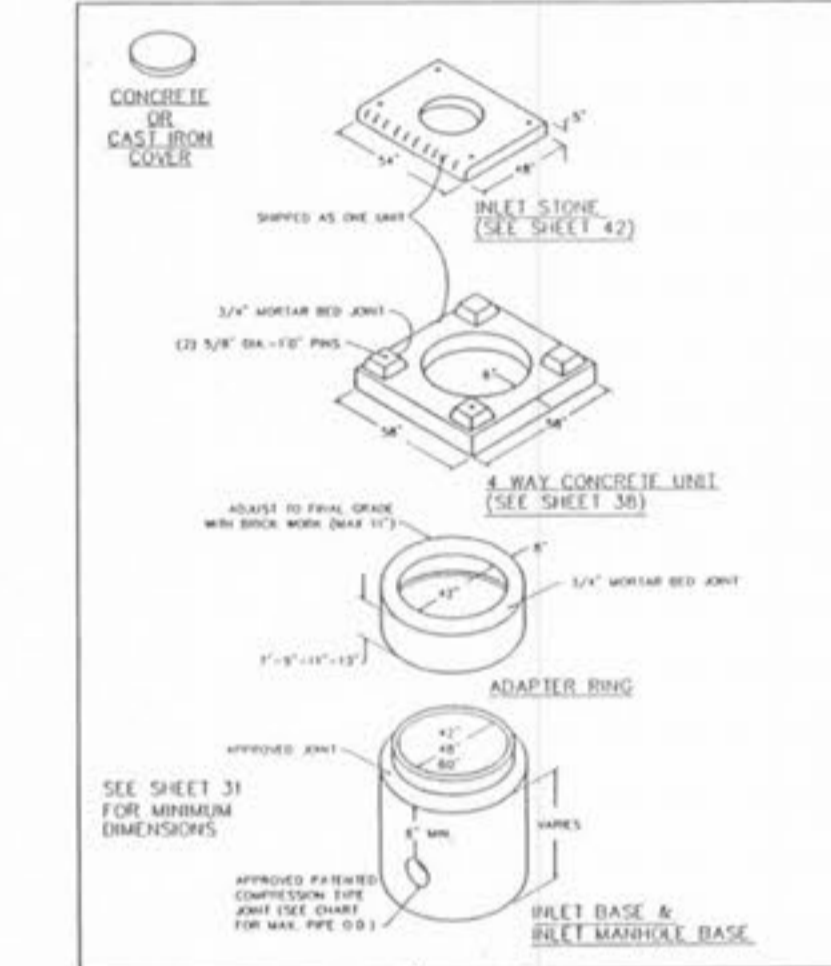
AREA INLET MANHOLE
(12" THRU 24")



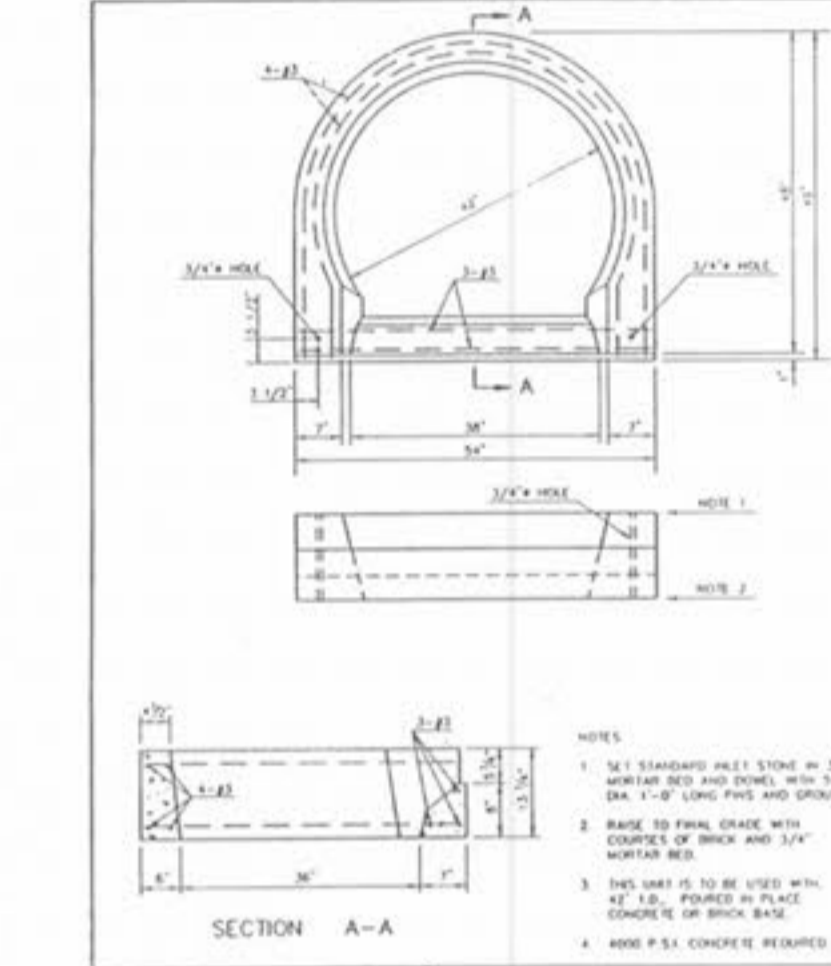
TYPICAL PRE-CAST MANHOLE TEE
FOR REINFORCED CONCRETE
PIPE SEWERS 48" AND
LARGER IN DIAMETER



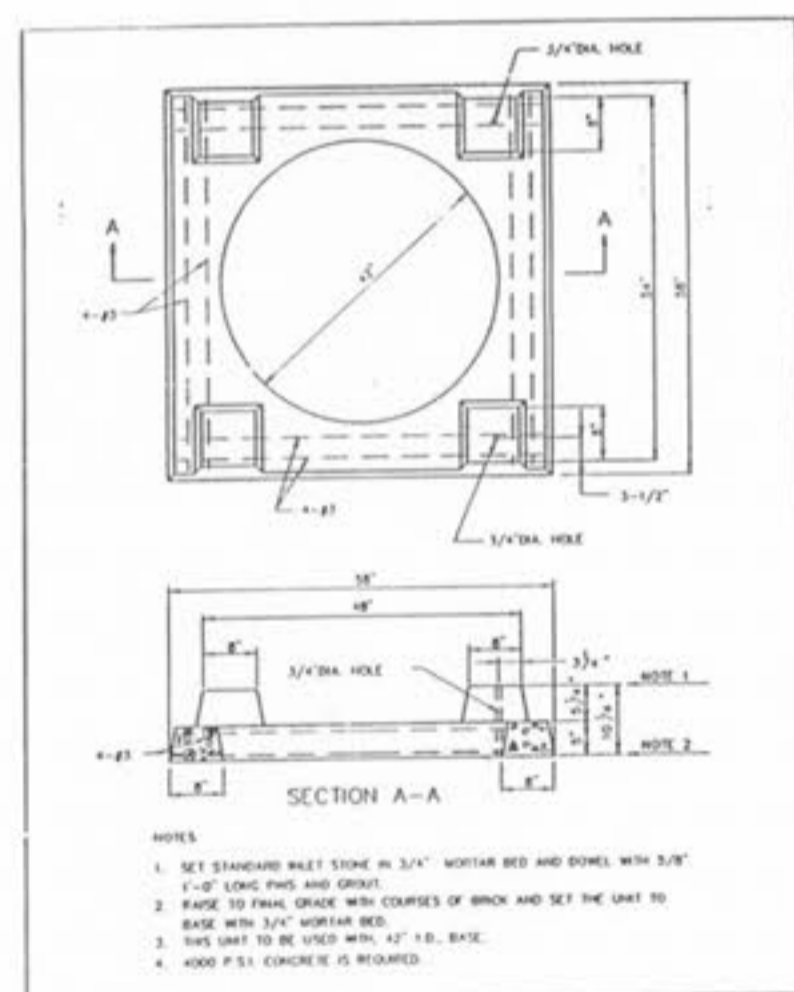
SINGLE STREET INLETS
PRECAST CONCRETE



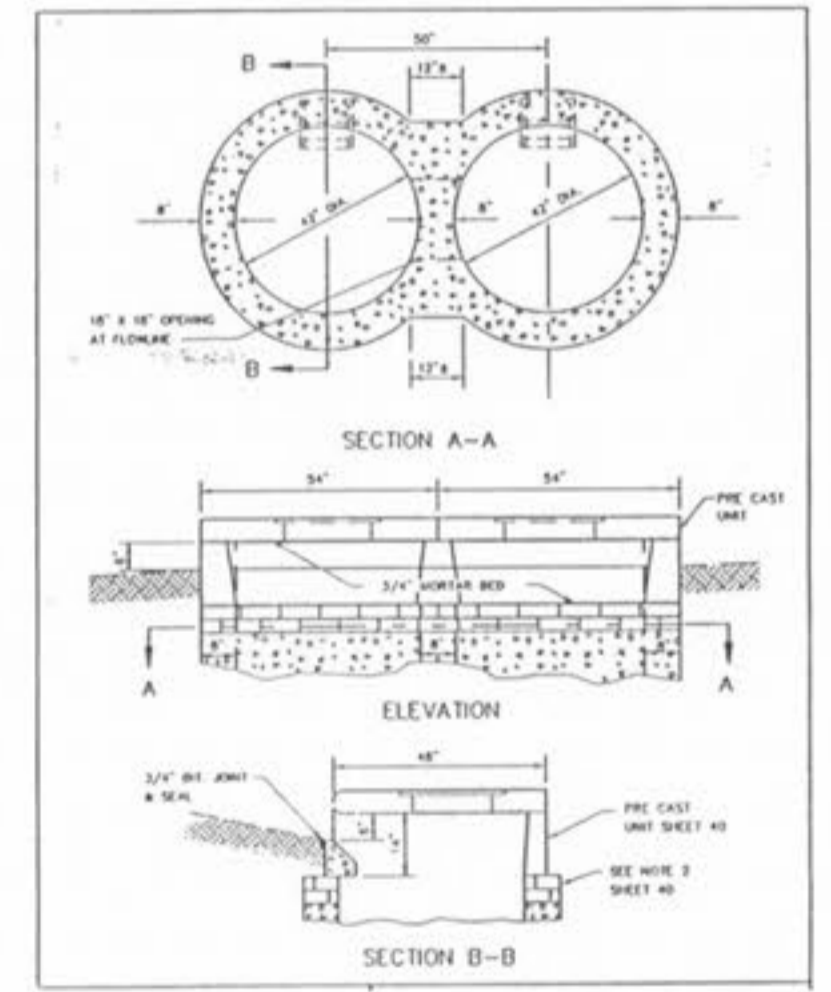
AREA INLET
PRECAST CONCRETE



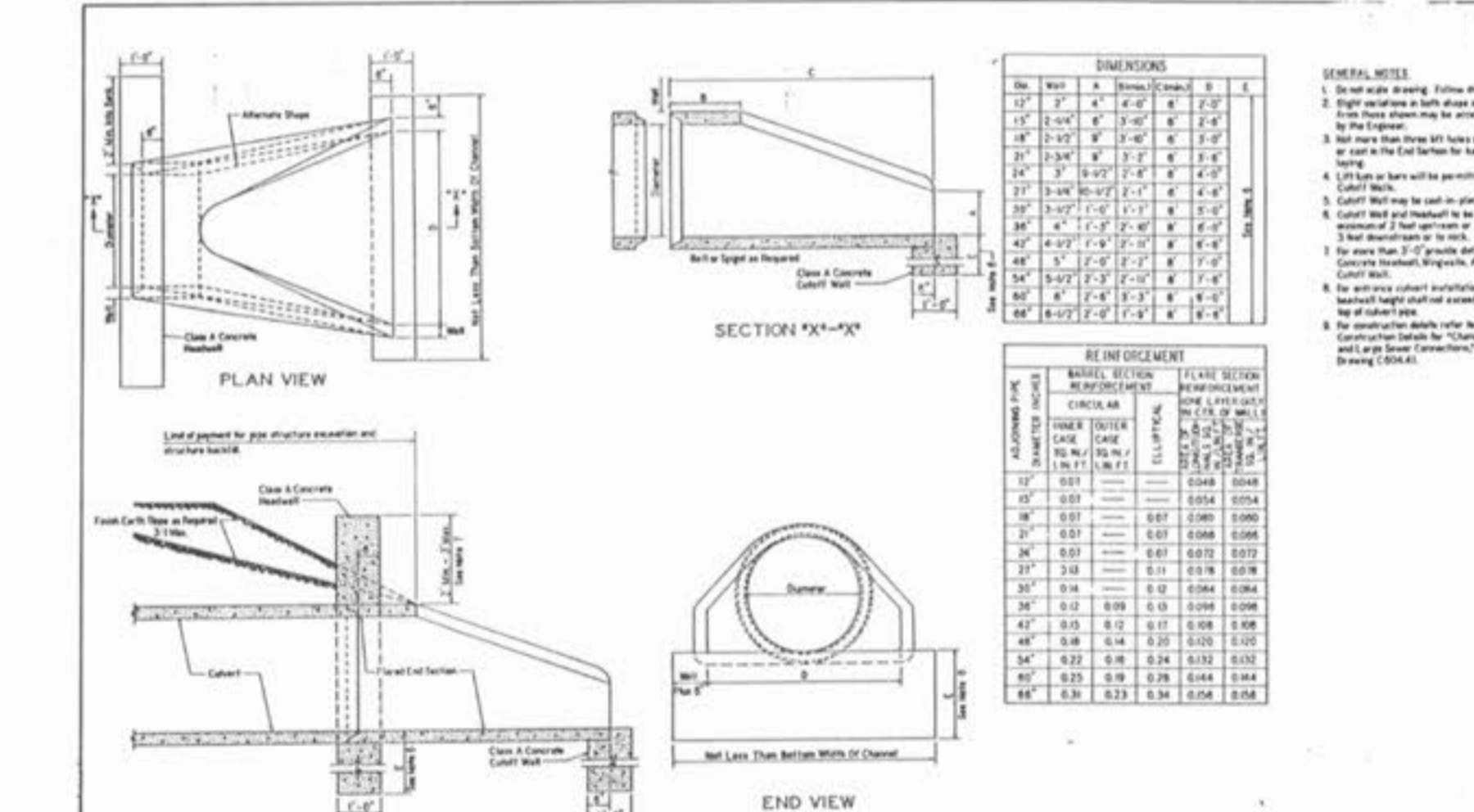
PRE-CAST CONCRETE UNIT
FOR SINGLE STREET INLET



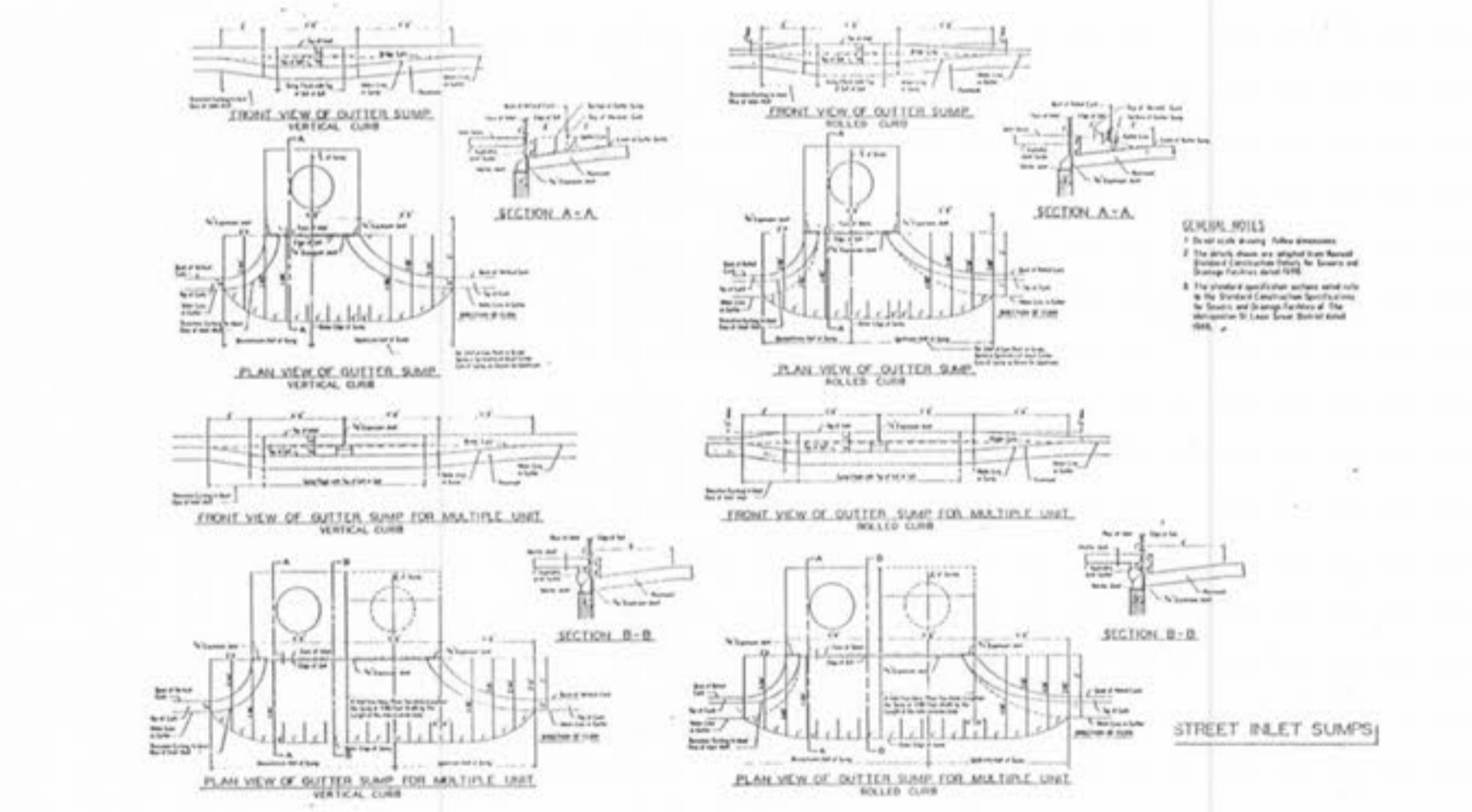
PRE-CAST CONCRETE UNIT
FOR
4 WAY AREA INLET



CONCRETE DOUBLE
STREET INLET W/PRE CAST
CONCRETE UNIT A



INSTALLATION DETAILS



STREET INLET SUMPS

PLANNING
SURVEYING
CIVIL ENGINEERING

SUNSET RIDGE ESTATES

DATE: 4/10/88 JOB NO.: 95-541 DRAWN BY: TWF
DESIGN: JOY SCALE: NONE

DETAIL SHEET

REV: - SHEET: 54 OF 55

4-12-86