

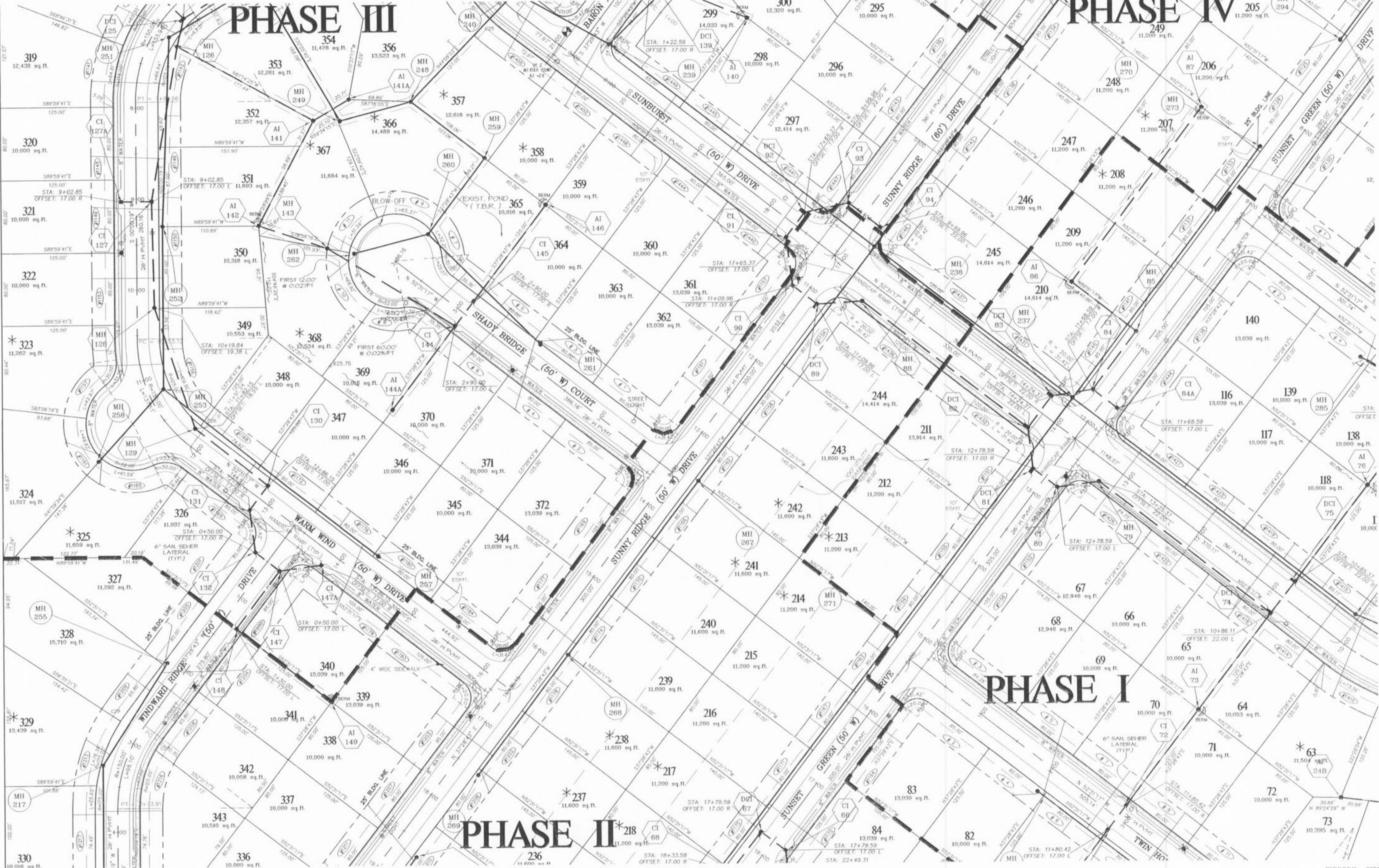
LAKE FOREST MANOR, INC.
1632/1445
"SR-1"

PHASE III

PHASE IV

PHASE I

PHASE II



CITY OF LAKE ST. LOUIS
"SR-1"

N/F
LAKE ST. LOUIS
COMMUNITY ASSOCIATION
805/1092

ZIP CODE: 63366



- PLAN-Pg 8 GRADING-Pg 14
- PLAN-Pg 7 GRADING-Pg 13
- PLAN-Pg 6 GRADING-Pg 12
- PLAN-Pg 3 GRADING-Pg 9
- PLAN-Pg 4 GRADING-Pg 10
- PLAN-Pg 5 GRADING-Pg 11

* - THESE LOTS ARE SUSCEPTIBLE TO STREET CREEP

The underground utilities shown herein were plotted from available information and do not necessarily reflect the actual existence, nonexistence, size, type, number, or location of these or other utilities. The general contractor shall be responsible for verifying the actual location of all underground utilities, shown or not shown, and said utilities shall be located in the field prior to any grading, excavation, or construction of improvements. These provisions shall in no way absolve any party from complying with the Underground Facility Safety and Damage Prevention Act, Chapter 309, RSMo.



SITE DEVELOPMENT ENGINEERING, INC.
12221 BIG BEND ROAD, ST. LOUIS, MISSOURI 63122 (314) 822-4800

SUNSET RIDGE ESTATES

DATE: 4/10/86 JOB NO.: 95-541 DRAWN BY: TWF
DESIGN: JOY SCALE: 1" = 80'

PLAN SHEET

REV: 8/30/86 per CLIENT REVISIONS
9/23/86 per CITY COMMENTS
11/21/86 per CITY COMMENTS
9/17/88 per CLIENT REVISIONS

SHEET 7 OF 56