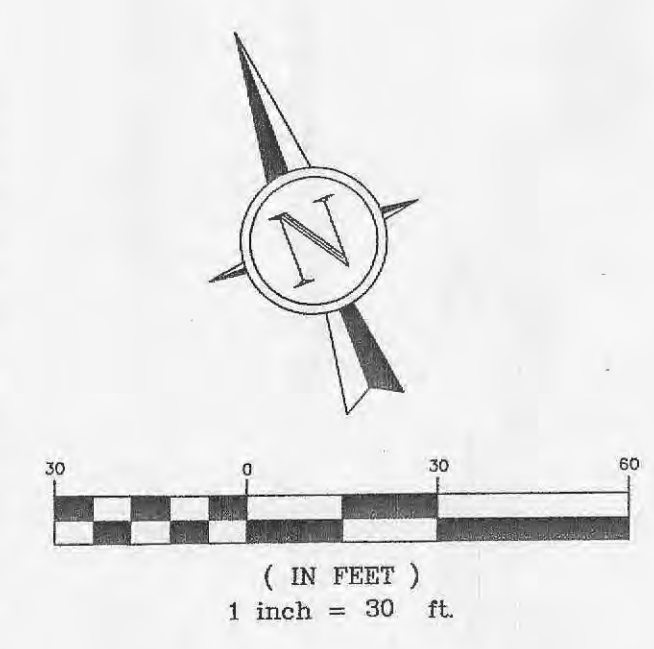
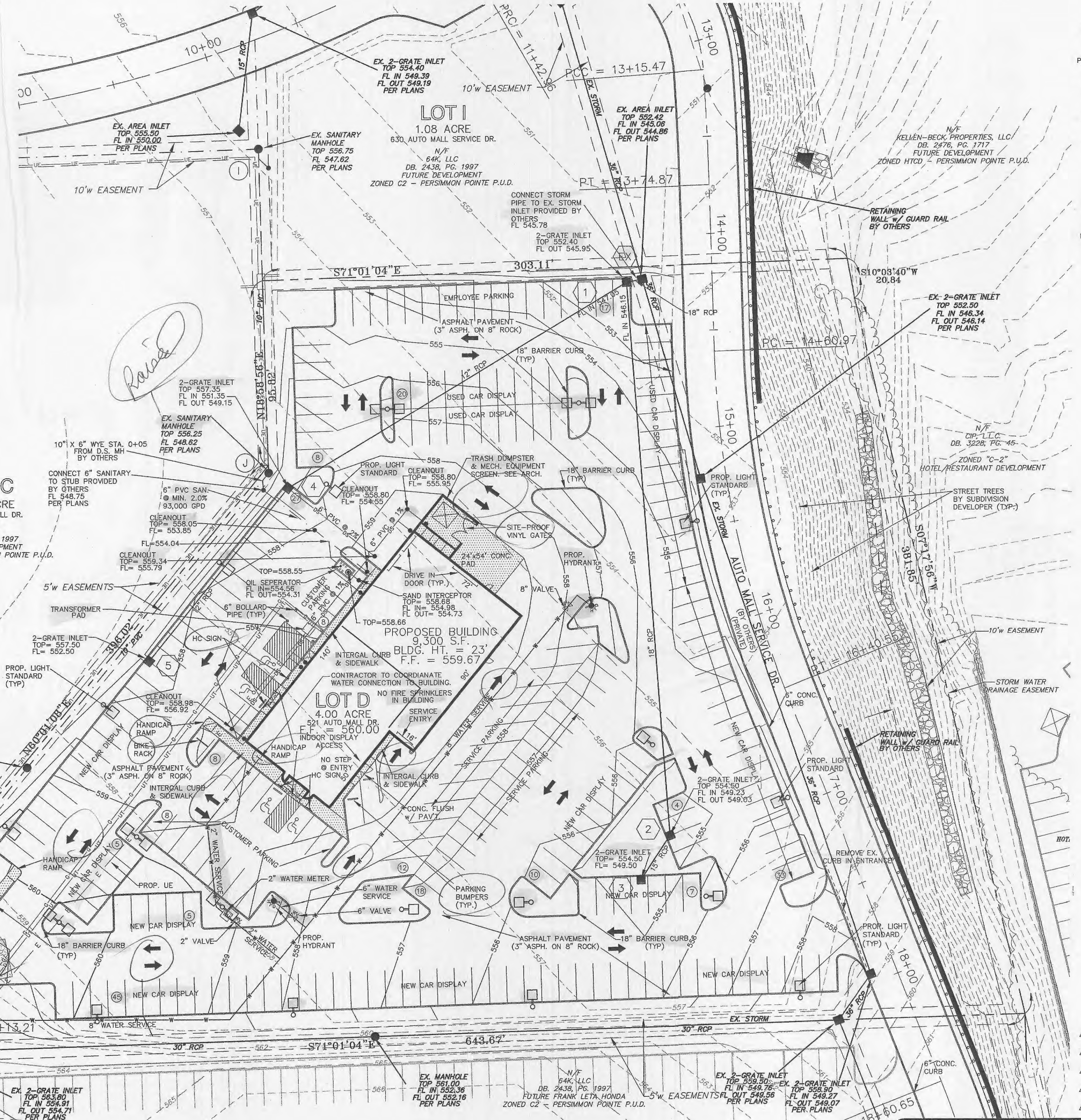


ENTRANCE DETAIL
ENTRANCE FROM AUTO MALL DRIVE
1" = 10'



PREPARED FOR:
SUNTRUP AUTOMOTIVE GROUP
CONTACT: CHRIS SUNTRUP
14410 MANCHESTER RD.
MANCHESTER, MO 63011
PH: (636) 227-8303
FAX: (636) 227-6209



PARKING CALCULATIONS

PARKING:			
1 PER 3,000 S.F. OF DISPLAY LOT	95,129 S.F.	=	32 SPACES
1 PER EMPLOYEE	25 EMPLOYEES	=	25 SPACES
1 PER 500 S.F. OF SERVICE AREA	6,480 S.F.	=	13 SPACES
1 PER 400 S.F. INDOOR DISPLAY	2,800 S.F.	=	7 SPACES
TOTAL REQUIRED		=	77 SPACES
TOTAL PROVIDED		=	79 SPACES
DISPLAY STALLS PROVIDED		=	156 SPACES
TOTAL STALLS PROVIDED		=	235 SPACES
H.C. ACCESSIBLE:			
TOTAL REQUIRED		=	4 SPACES
TOTAL PROVIDED		=	4 SPACES
BICYCLE:			
1 FOR 15 PARKING SPACES		=	5 SPACES
77 P.S.		=	5 SPACES
TOTAL REQUIRED		=	5 SPACES
TOTAL PROVIDED		=	5 SPACES

- Ⓐ 02/10/06 PER CITY COMMENTS
- Ⓐ 12/19/05 PER CITY COMMENTS
- Ⓐ 10/18/05 PER FIRE MARSHALL COMMENTS
- Ⓐ 10/11/05 PER CITY COMMENTS
- Ⓐ 09/12/05 PER DUCKETT CREEK SANITARY DISTRICT COMMENTS



SUNTRUP VOLVO
SITE PLAN

J. R. GRIMES
CONSULTING ENGINEERS, INC.

12300 OLD TESSON ROAD
SUITE 3000
ST. LOUIS, MO. 63128
PH. (314) 849-6100
FAX (314) 849-6010

DRAWN BY:	DATE:	CHECKED BY:	DATE:	JOB NUMBER:	SHEET:
JSK	08/05/05	LJM	08/05/05	1499	C4