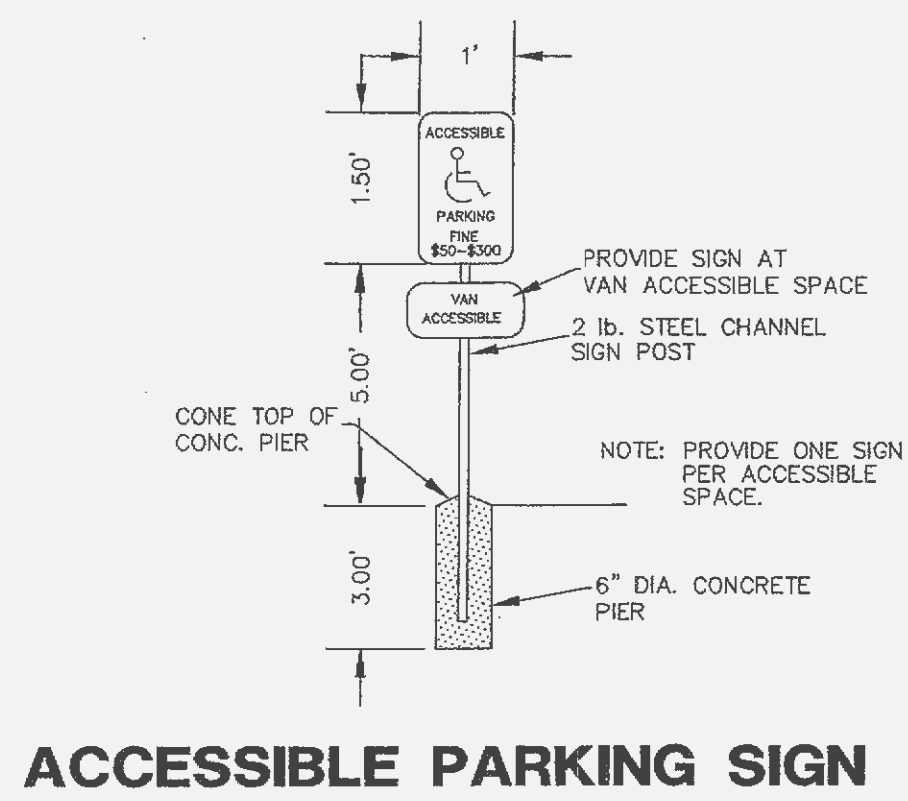
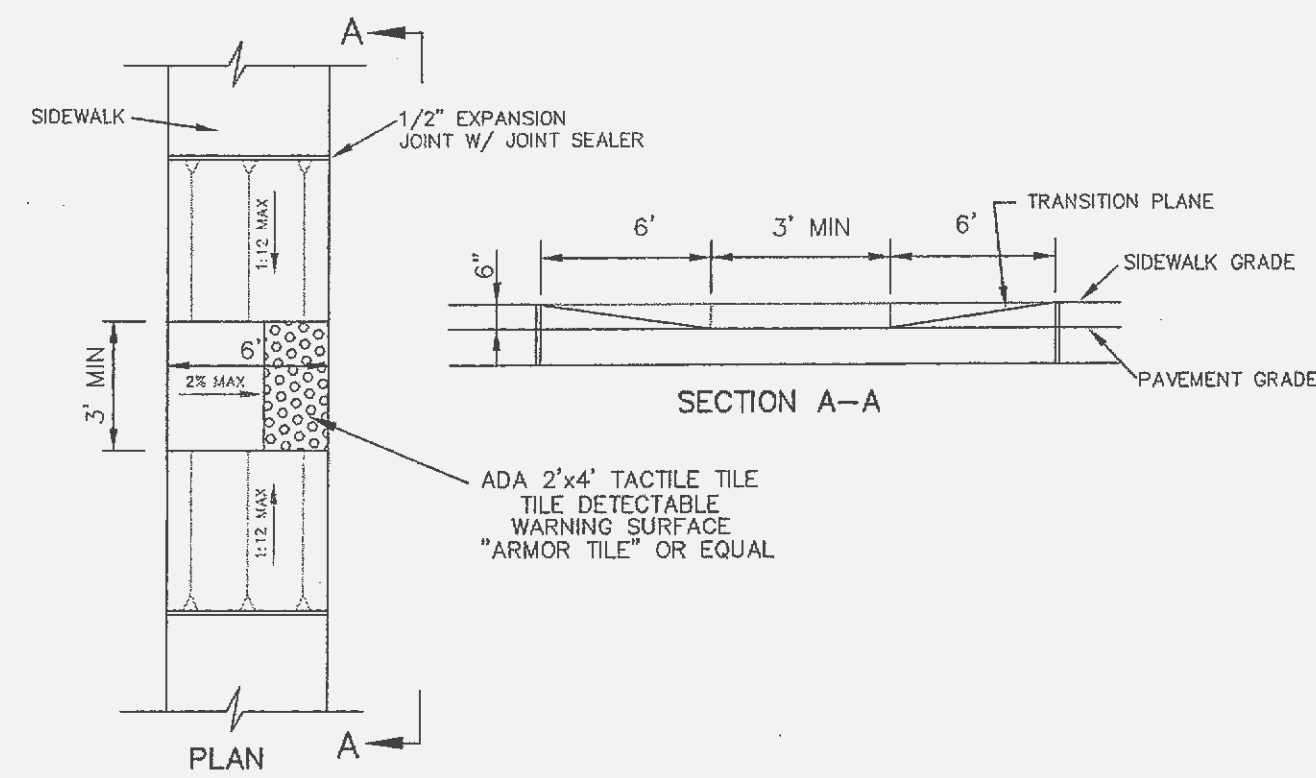


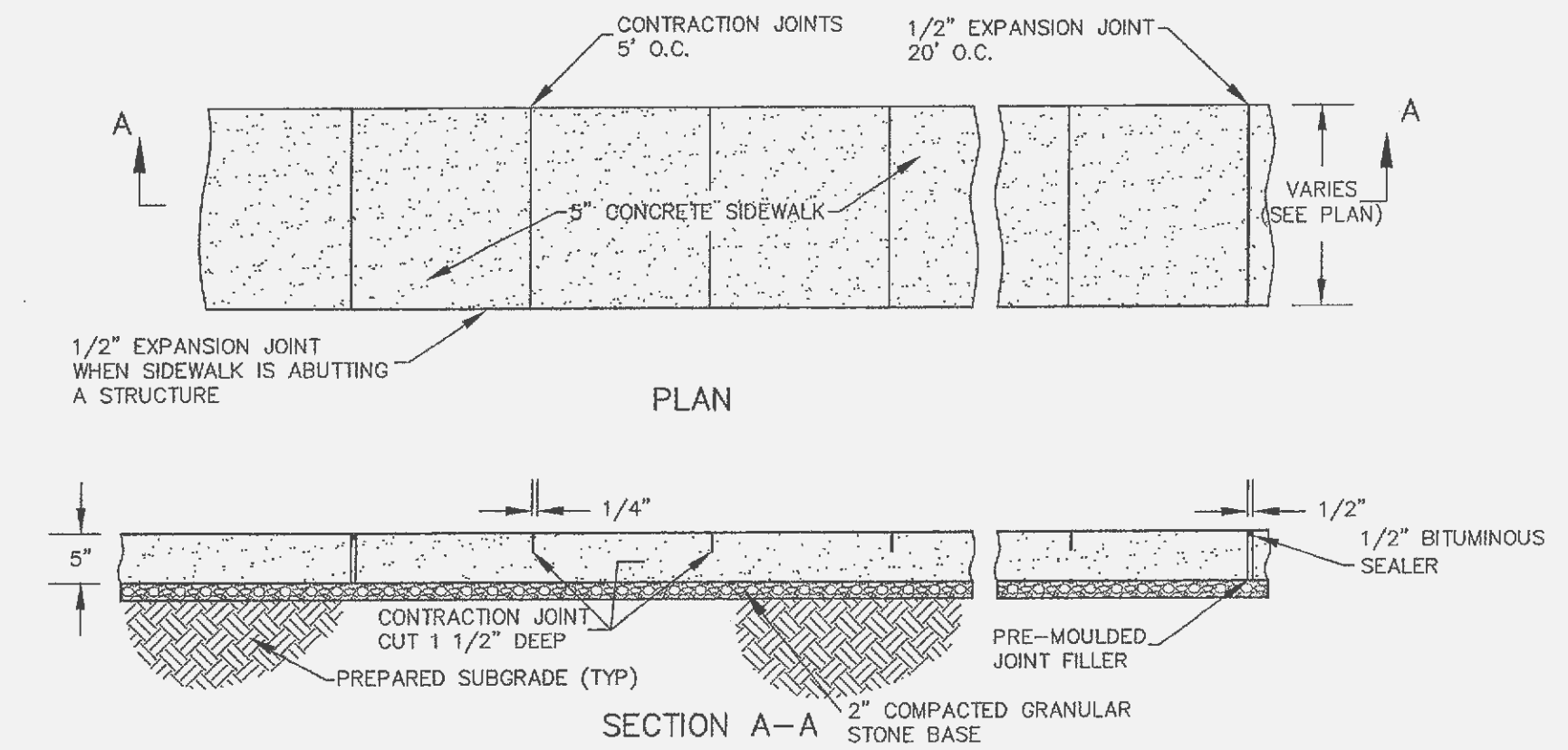
TYPICAL PARKING STALLS



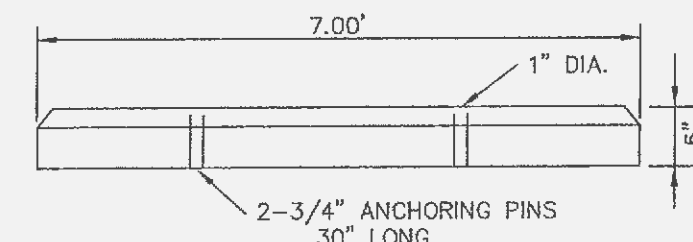
ACCESSIBLE PARKING SIGN



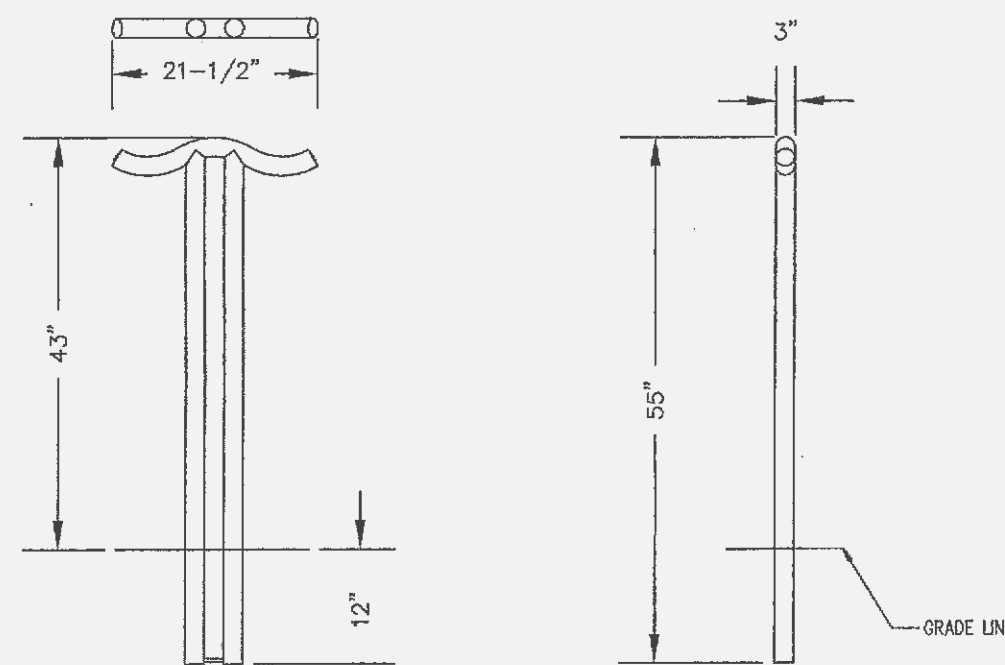
ACCESSIBLE RAMP DETAIL W/ TRUNCATED DOMES



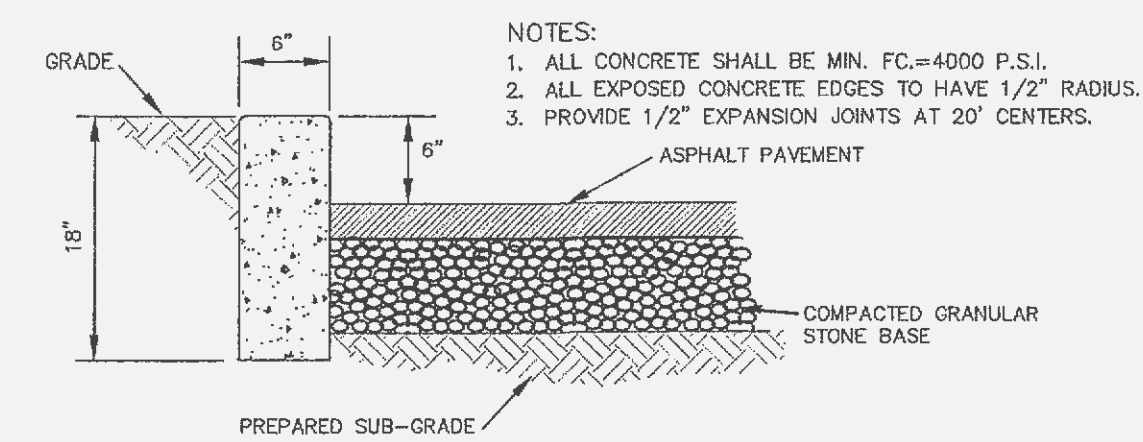
DETAIL OF CONCRETE SIDEWALK



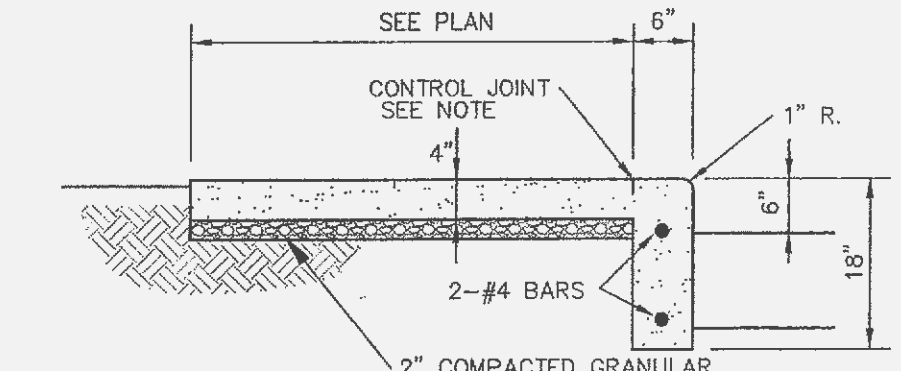
PRE-CAST PARKING BUMPER



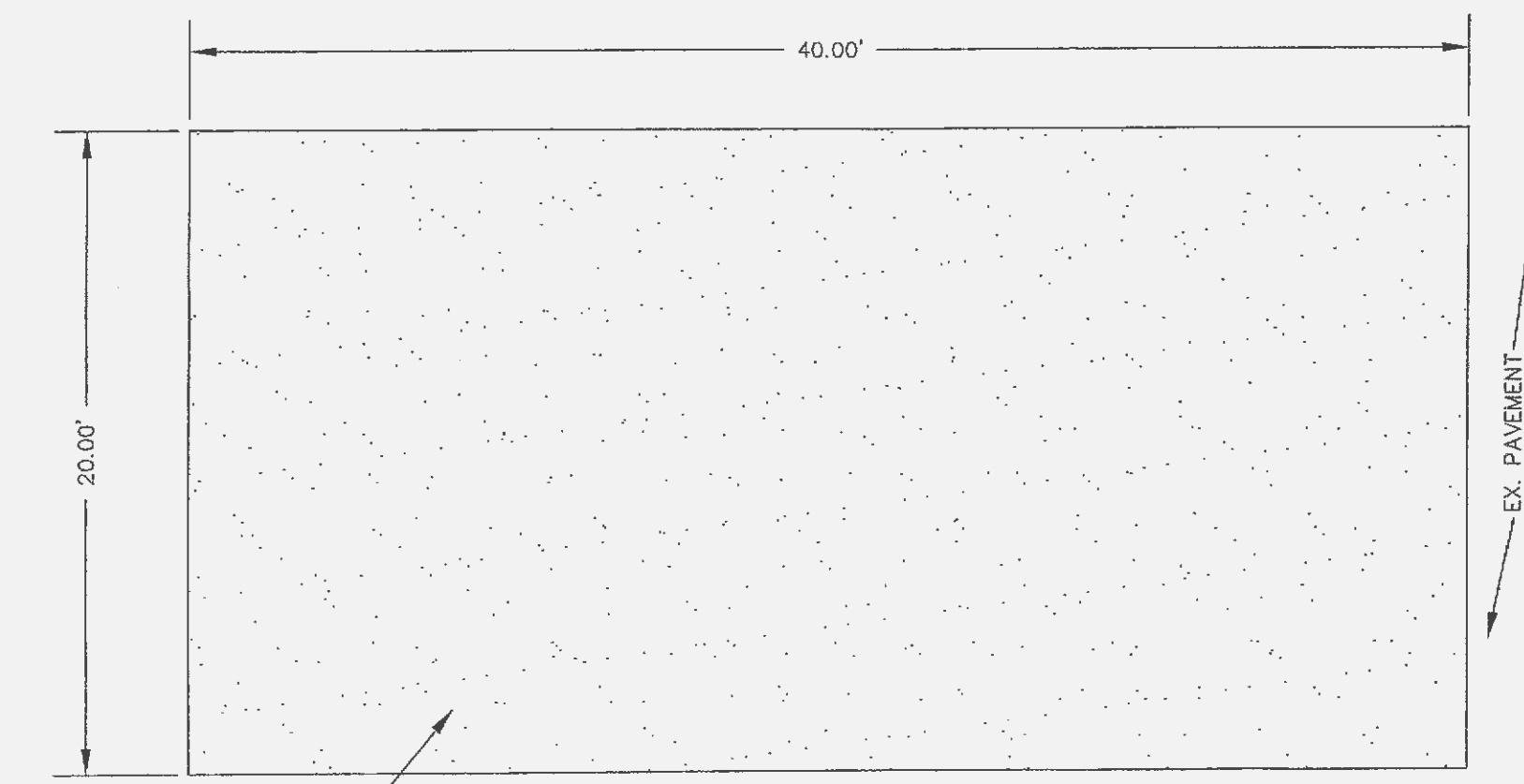
BICYCLE RACK



18\"/>

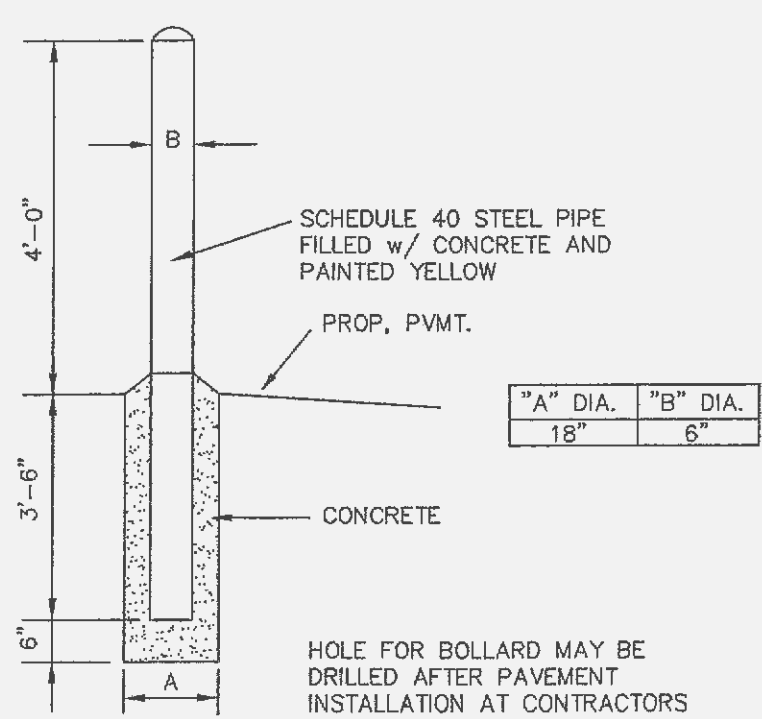


INTEGRAL SIDEWALK & CURB

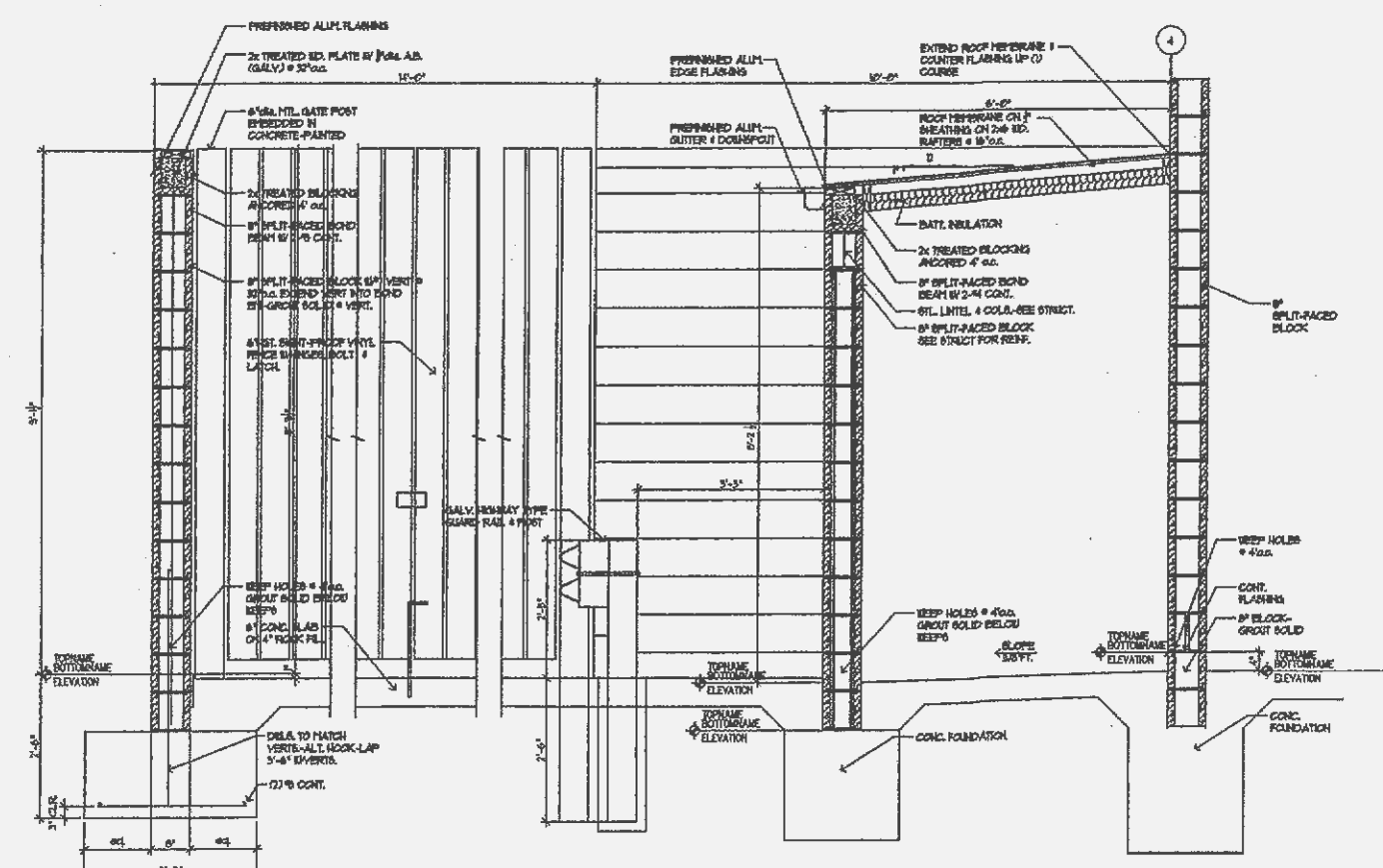


TEMPORARY WASHDOWN AREA

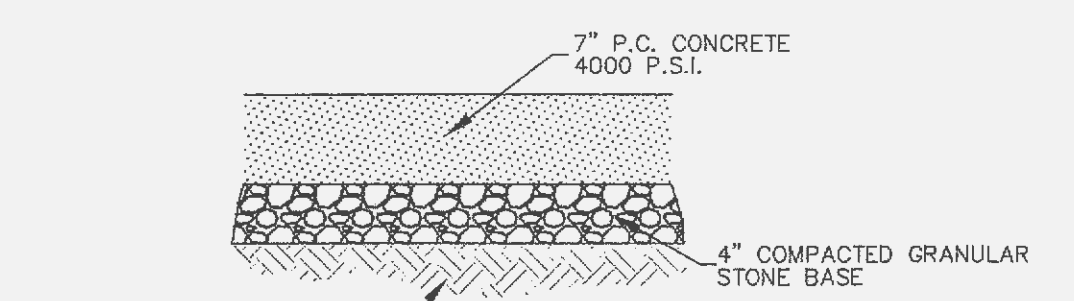
Landscapeforms
 TITLE: 21-1/2" W X 43" H - PI RACK - EMBEDDED
 DESIGN: PI RACK OR APPROVED EQUAL



PIPE BOLLARD



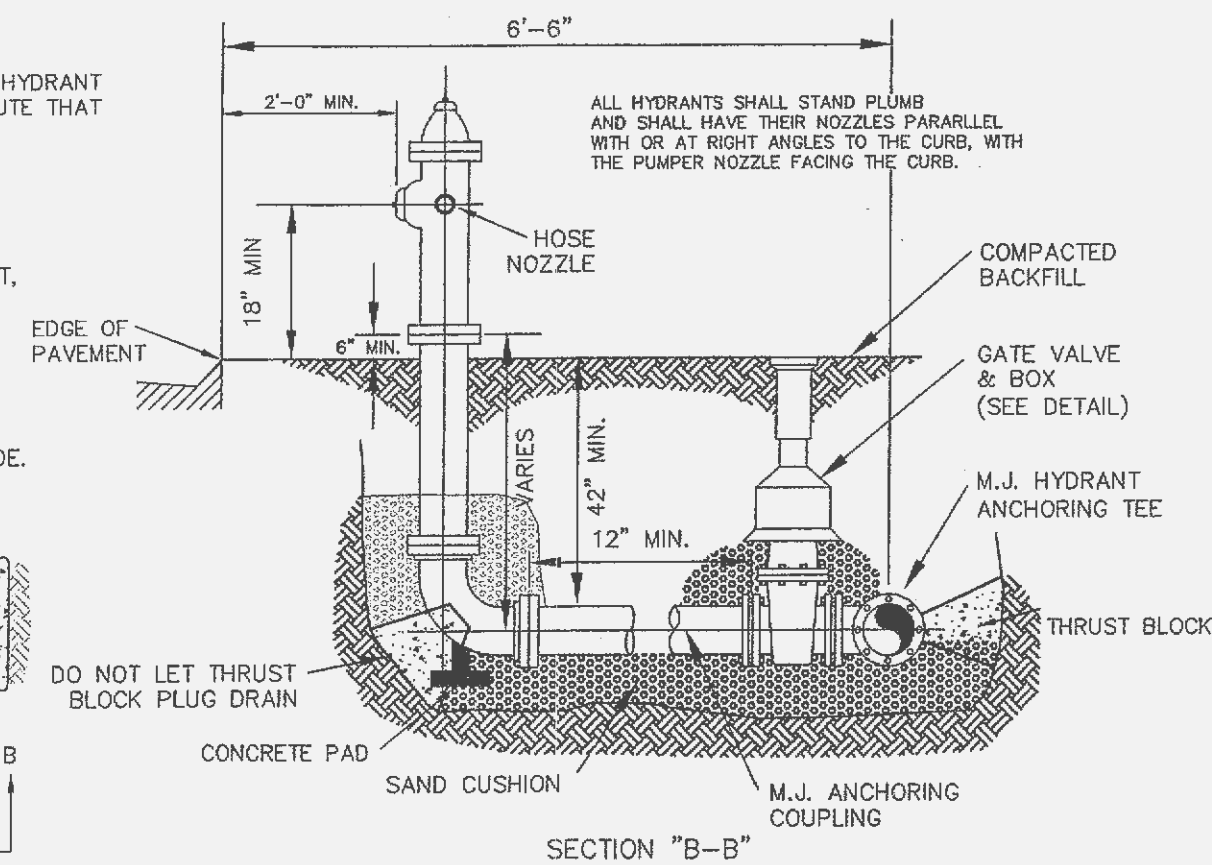
TRASH ENCLOSURE DETAIL



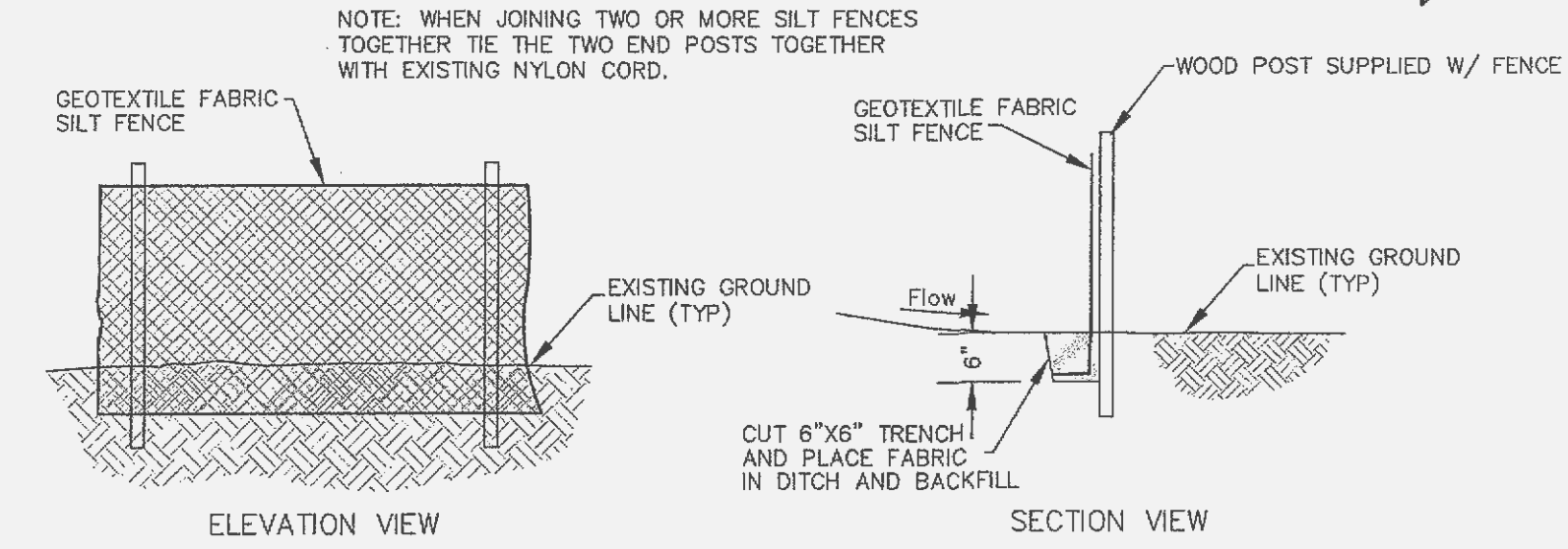
CONCRETE PAVEMENT DETAIL

FIRE HYDRANTS SHALL MEET THE FOLLOWING REQUIREMENTS:

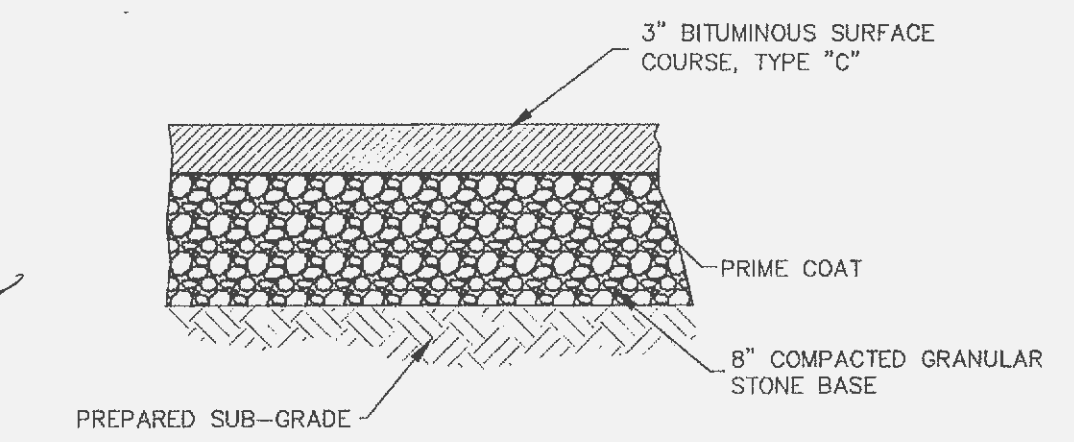
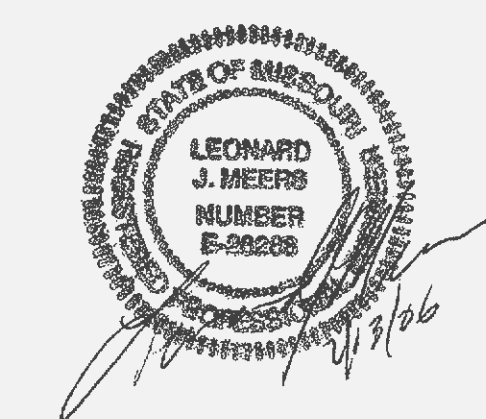
- CENTERLINE OF THE 4 1/2 INCH HYDRANT OUTLET SHALL BE A MINIMUM OF 16 INCHES AND A MAXIMUM OF 36 INCHES ABOVE FINISH GRADE.
- THE TYPE AND DESIGN OF THE FIRE HYDRANT SHALL BE APPROVED, IF DIFFERENT THAN THE ALREADY APPROVED TYPE AND DESIGN THAT IS BEING USED BY THE LOCAL FIRE PROTECTION DISTRICT THE FIRE HYDRANT SHALL BE PROVIDED WITH TWO 1/2" HOSE NOZZLES AND ONE 4 1/2" PUMPER NOZZLE, ALL HAVING NATIONAL STANDARD HOSE THREADS. NOZZLES SHALL HAVE CAPS ATTACHED BY CHAINS. OPERATING NUTS SHALL BE ANWA STANDARD (PENTAGONAL, MEASURING 1 1/2" POINT TO FLAT). HYDRANT SHALL HAVE A 5 1/4" VALVE AND 6" BARREL.
- ALL PUBLIC FIRE HYDRANT BARRELS ARE TO BE PAINTED YELLOW. ALL FIRE HYDRANT BONNETS ARE TO BE PAINTED BASED ON THE GALLONS OF WATER PER MINUTE THAT THEY WILL FLOW. THESE COLORS ARE PER N.F.P.A.
 A) RED = 500 OR LESS GALLONS
 B) ORANGE = 501 TO 1000 GALLONS
 C) GREEN = 1001 TO 1500 GALLONS
 D) BLUE = 1501 GALLONS OR GREATER
- FIRE HYDRANTS SHALL BE SET BACK FROM THE CURB OF THE PAVEMENT, THE SET BACK SHALL NOT EXCEED 12 FEET.
- FIRE HYDRANTS SHALL NOT BE OBSTRUCTED BY PLANTINGS, BUSHES, TREES, SIGNS, LIGHT STANDARDS, FENCING, ETC. WITHIN 6 FEET OF ANY HYDRANT IN ALL DIRECTIONS.
- THE MINIMUM FIRE FLOW FROM A SINGLE FIRE HYDRANT SHALL BE IN ACCORDANCE WITH APPENDIX "B" OF THE 2003 INTERNATIONAL FIRE CODE. (2000 GPM @ 20 PSI IF BUILDING HAS NO SPRINKLER SYSTEM OR 1500 GPM @ 20 PSI IF BUILDING HAS SPRINKLER SYSTEM.)



FIRE HYDRANT DETAILS



SILTATION CONTROL SILTFENCE DETAIL



ASPHALT PAVEMENT DETAIL

- 02/10/06 PER CITY COMMENTS
- 10/18/05 PER FIRE MARSHALL COMMENTS
- 10/11/05 PER CITY COMMENTS

PREPARED FOR:
 SUNTRUP AUTOMOTIVE GROUP
 CONTACT: CHRIS SUNTRUP
 14410 MANCHESTER RD.
 MANCHESTER, MO 63011
 PH: (636) 227-8303
 FAX: (636) 227-6209

SUNTRUP VOLVO
 DETAILS

J. R. GRIMES
 CONSULTING ENGINEERS, INC.

12300 OLD TESSON ROAD
 SUITE 3000
 ST. LOUIS, MO. 63128
 PH. (314) 849-6100
 FAX (314) 849-6010

DRAWN BY: JSK	DATE: 08/05/05	CHECKED BY: LJM	DATE: 08/05/05	JOB NUMBER: 1499	SHEET: C7
---------------	----------------	-----------------	----------------	------------------	-----------