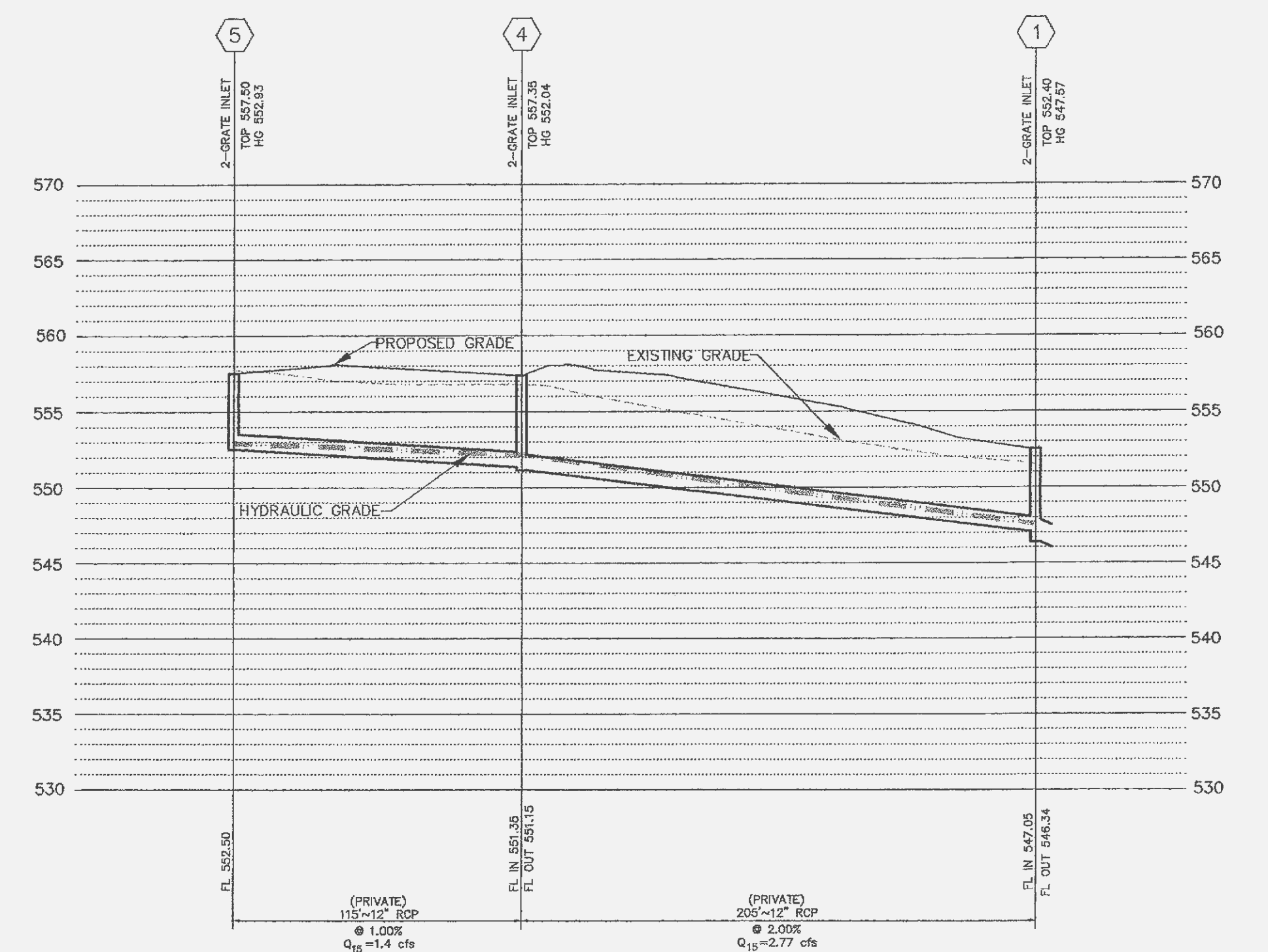
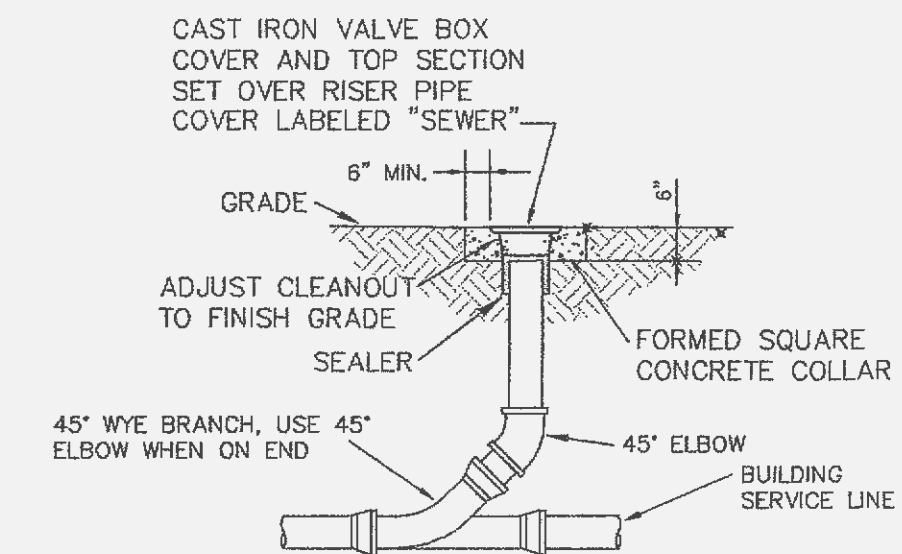


5 VERT.
30 HORIZ.
SCALE:



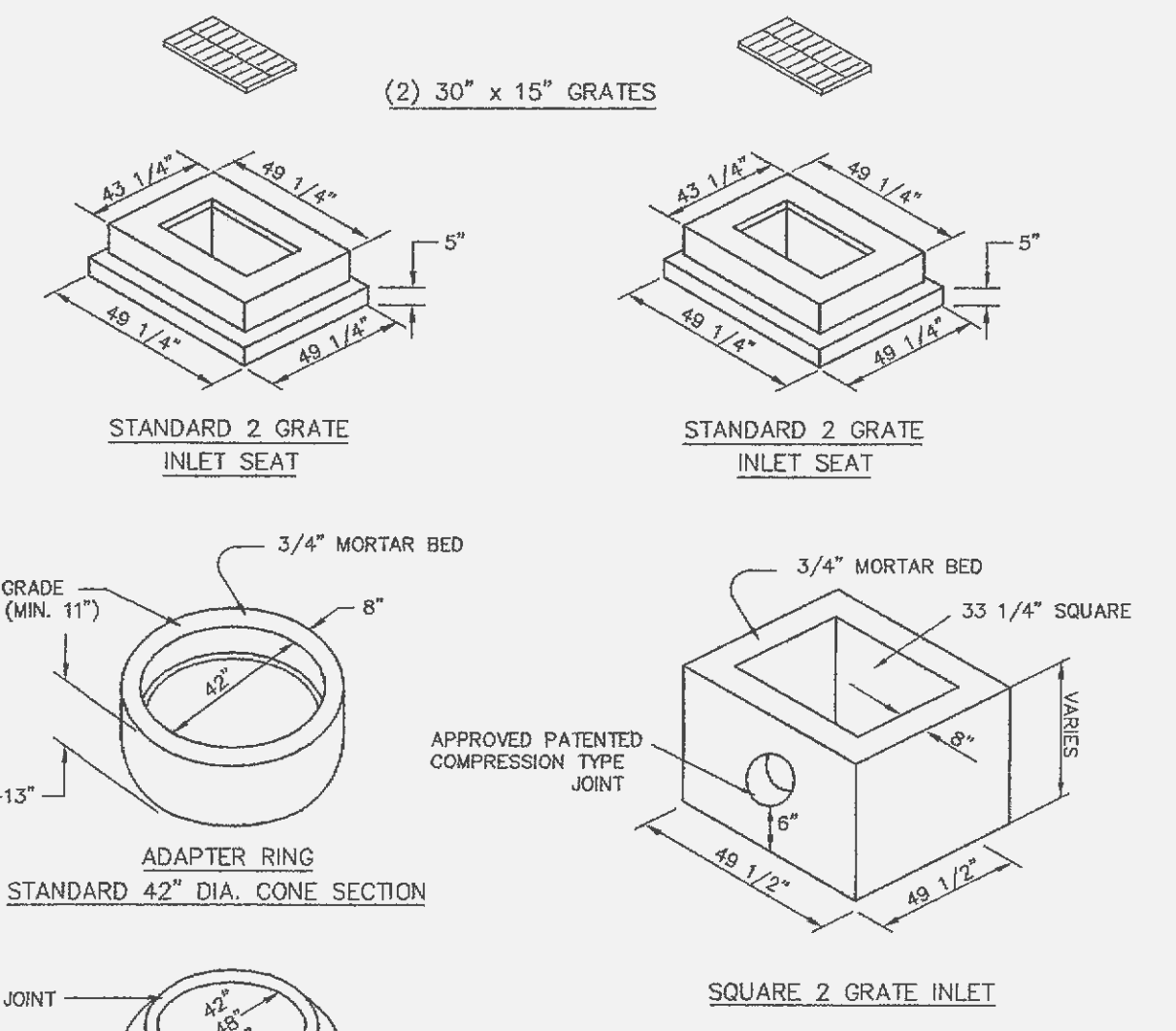
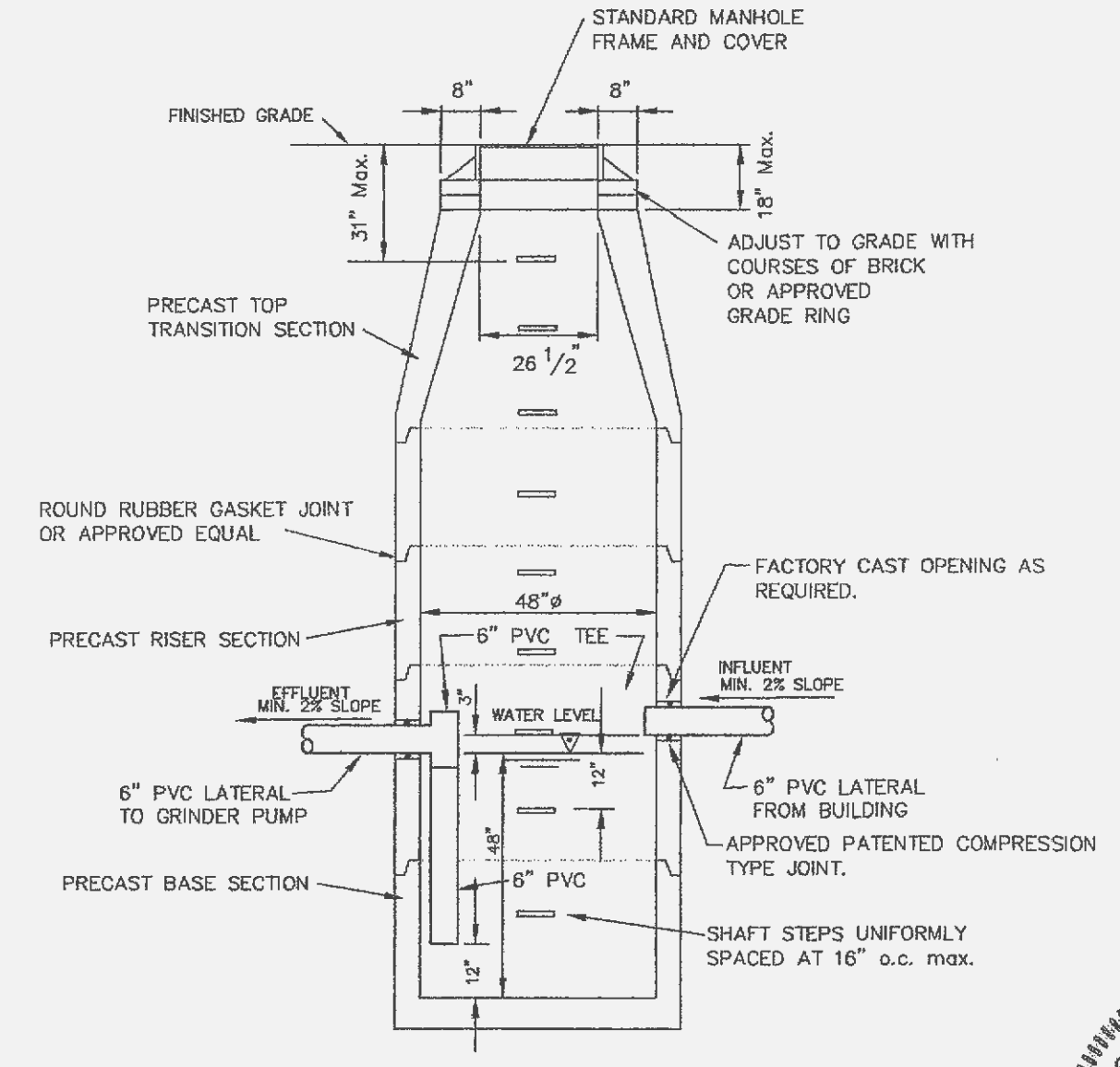
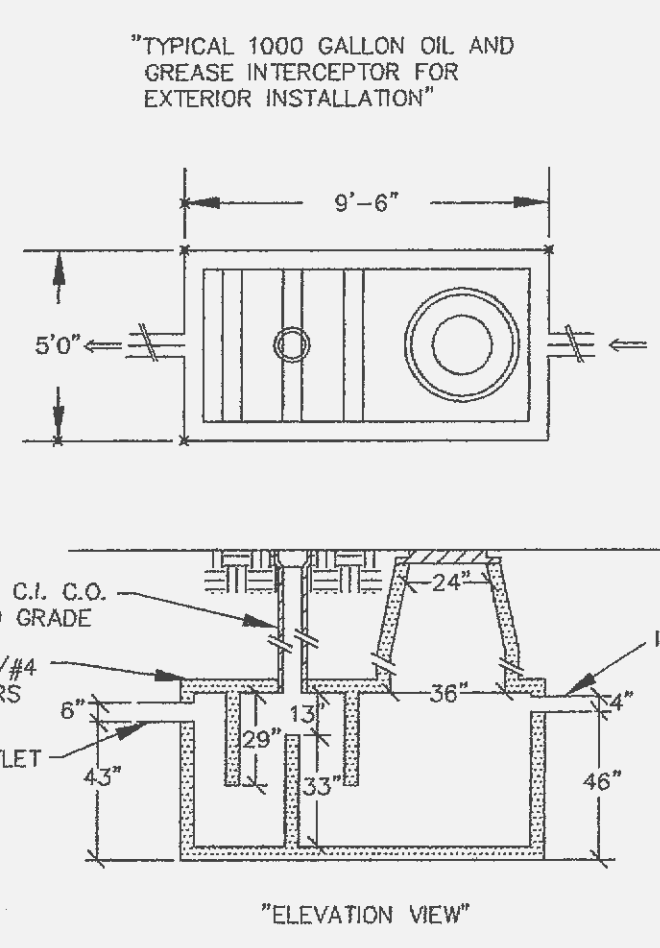
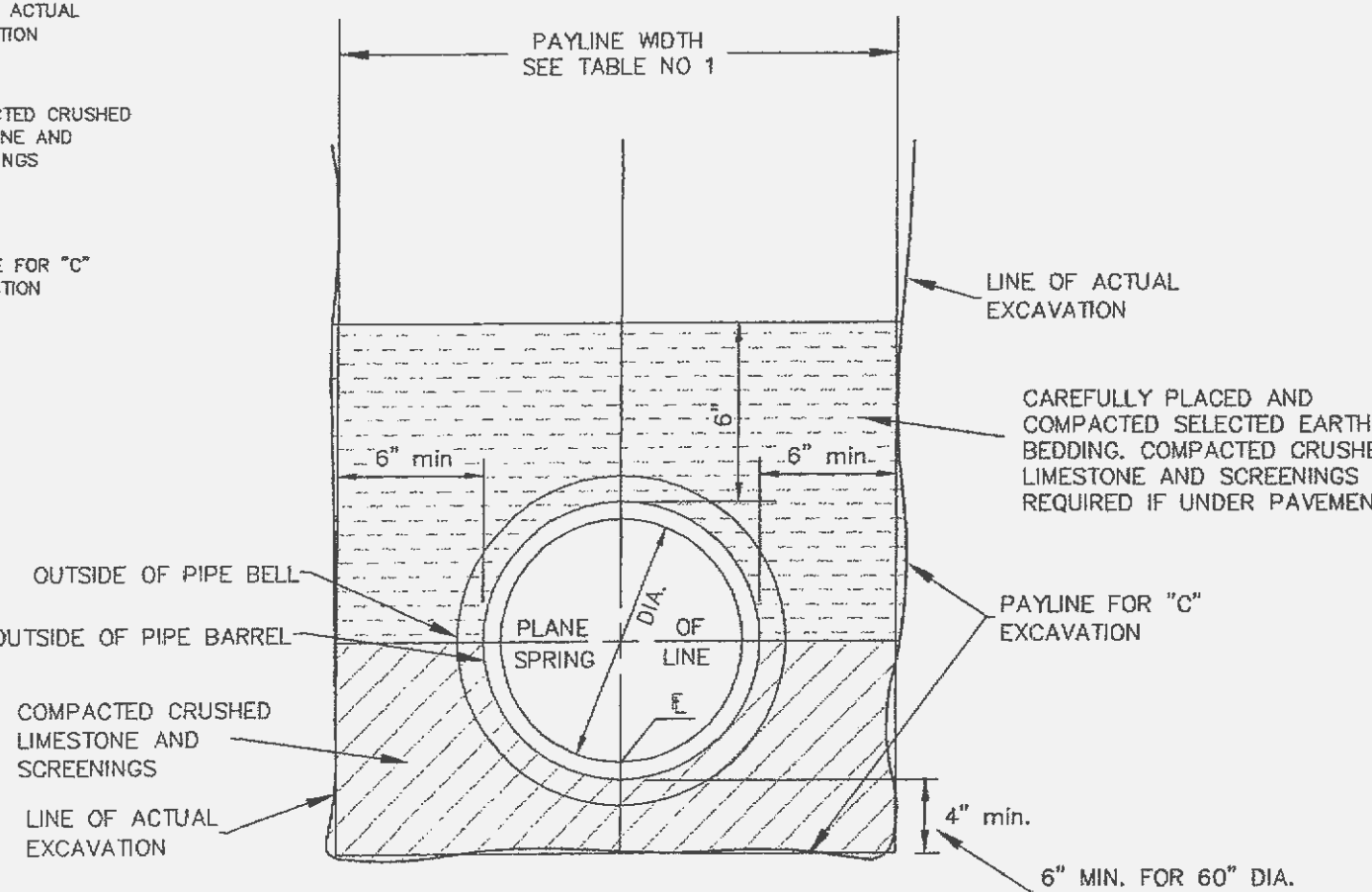
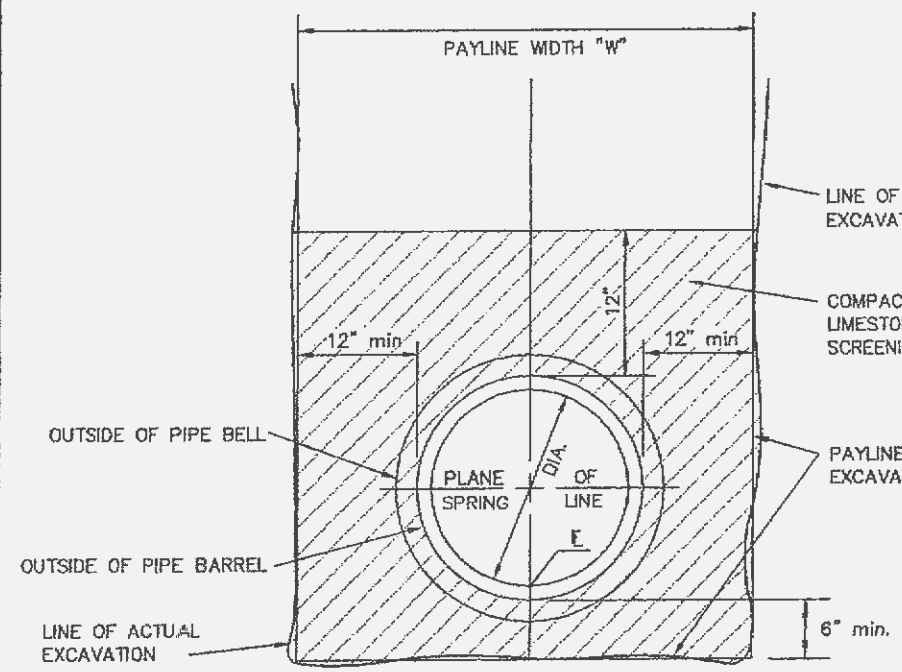
J.R. GRIMES
CONSULTING ENGINEERS, INC.

SUNTRUP VOLVO

CALC. BY: JSK
DATE: 8/12/2005
REVISED: 10/10/2005

VER. 3.0

STRUCTURE	UPR	LOWER	FLOWLINE LOWER	LENGTH FT.	GRADE ft. / ft.	PIPE SIZE	"n"	Q	TOTAL Q	V f.p.s.	Vh ft.	PIPE LOSSES (ft.)				STRUCTURE LOSSES (ft.)		HYD. ELEV.		LOWEST	FREEBOARD	PIPE CAPACITY	Q/CAP.	DEPTH IN PIPE	FULL FLOW VELOCITY f.p.s.	GIVEN LOWER HYD. ELEV.		
												FRICT. LOSS	CURVE LOSS	TOTAL PIPE LOSSES	JUNC. LOSS	BEND LOSS	TOTAL STRUC. LOSSES	UPPER	LOWER								ft. / ft.	OPENING
HYDRAULIC DATA 15 YEAR STORM																												
1	EX		545.95	545.79	8	0.0200	18	0.013	5.75	11.12	6.92	0.74	0.11	0.00	0.11	0.72	0.54	1.26	550.92	549.55	0.01356	552.40	1.48	14.86	0.75	0.95	6.29	549.55
2	1		549.03	546.15	288	0.0100	18	0.013	0.97	5.37	3.04	0.14	0.75	0.00	0.75	0.11	0.12	0.24	551.91	550.92	0.00261	554.50	2.59	10.50	0.51	0.75	3.04	
3	2		549.50	549.23	27	0.0100	15	0.013	4.40	4.40	3.87	0.23	0.15	0.00	0.15	0.00	0.00	0.00	552.05	551.91	0.00541	554.50	2.45	6.46	0.68	0.75	3.59	
4	1		551.15	547.05	205	0.0200	12	0.013	1.37	2.77	3.60	0.20	1.29	0.00	1.29	0.20	0.17	0.37	552.04	547.57	0.00629	557.35	5.31	5.04	0.55	0.52	3.53	
5	4		552.50	551.35	115	0.0100	12	0.013	1.40	1.40	1.66	0.04	0.15	0.00	0.15	0.00	0.00	0.00	552.93	552.04	0.00134	557.50	4.58	3.56	0.39	0.43	1.78	



NOTE: INLETS ON THIS SHEET ARE TO BE USED IN LOCATIONS WHERE STANDARD OPEN THROAT INLETS CAN NOT BE USED, IN PAVED TRAFFIC WAY AND IN LIMITED EASEMENTS.

NOTE: PROVIDE MARKING ON ALL STORM SEWER INLETS. EPOXY TO BE USED AS ADHESIVE. EITHER THE ACP INTERNATIONAL (WWW.ACPINTERNATIONAL.COM) CRYSTAL CAP STYLE "NO DUMPING DRAINS TO WATERWAYS" PART# SD-W-CC OR DAS MANUFACTURING, INC. (WWW.DASMANUFACTURING.COM) STANDARD STYLE "NO DUMPING, DRAINS TO STREAM" PART# SDS WILL BE APPROVED.

PREPARED FOR:
SUNTRUP AUTOMOTIVE GROUP
CONTACT: CHRIS SUNTRUP
14410 MANCHESTER RD.
MANCHESTER, MO 63011
PH: (636) 227-8303
FAX: (636) 227-6209

10/11/05 PER CITY COMMENTS

SUNTRUP VOLVO
PROFILES

J. R. GRIMES
CONSULTING ENGINEERS, INC.

12300 OLD TESSON ROAD
SUITE 300D
ST. LOUIS, MO. 63128
PH. (314) 648-6100
FAX (314) 648-6010

DRAWN BY: JSK DATE: 08/05/05 CHECKED BY: LJM DATE: 08/05/05 JOB NUMBER: 1499 SHEET: C8

