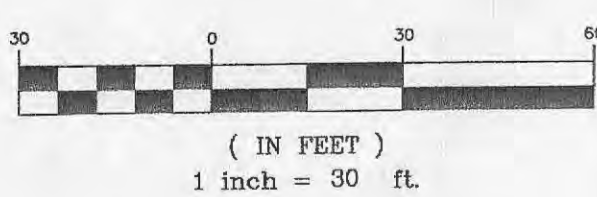
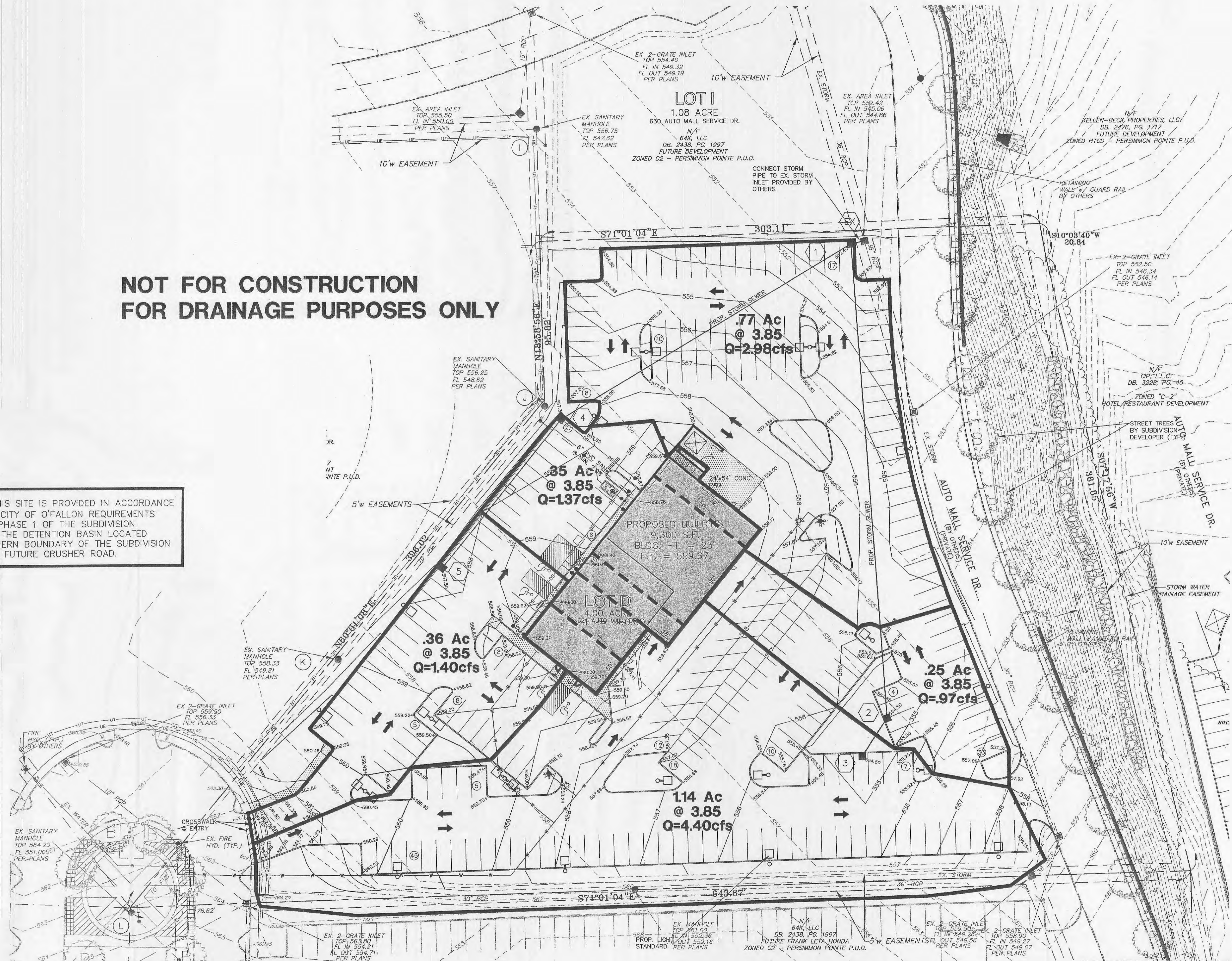
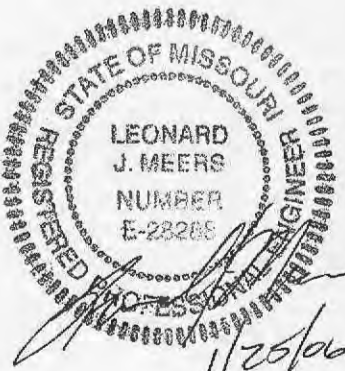


**NOT FOR CONSTRUCTION
FOR DRAINAGE PURPOSES ONLY**

DETENTION FOR THIS SITE IS PROVIDED IN ACCORDANCE WITH THE LATEST CITY OF O'FALLON REQUIREMENTS CONSTRUCTED IN PHASE 1 OF THE SUBDIVISION CONSTRUCTION IN THE DETENTION BASIN LOCATED ALONG THE NORTHERN BOUNDARY OF THE SUBDIVISION ADJACENT TO THE FUTURE CRUSHER ROAD.



PREPARED FOR:
SUNTRUP AUTOMOTIVE GROUP
CONTACT: CHRIS SUNTRUP
14410 MANCHESTER RD.
MANCHESTER, MO 63011
PH: (636) 227-8303
FAX: (636) 227-6209



1 01/23/06 PER CITY COMMENTS
2 10/11/05 PER CITY COMMENTS

SUNTRUP VOLVO			
DRAINAGE AREA MAP			
J. R. GRIMES		CONSULTING ENGINEERS, INC.	
DRAWN BY:	DATE:	CHECKED BY:	DATE:
JSK	08/05/05	LJM	08/05/05
JOB NUMBER: 1499		SHEET: C9	

12300 OLD TESSON ROAD
SUITE 3000
ST. LOUIS, MO. 63128
PH. (314) 849-6100
FAX (314) 849-6010

3:\1499\PLANS\SITE-CD\S.dwg, CP-DWM, 1/23/2006 9:55:10 AM, jahnk