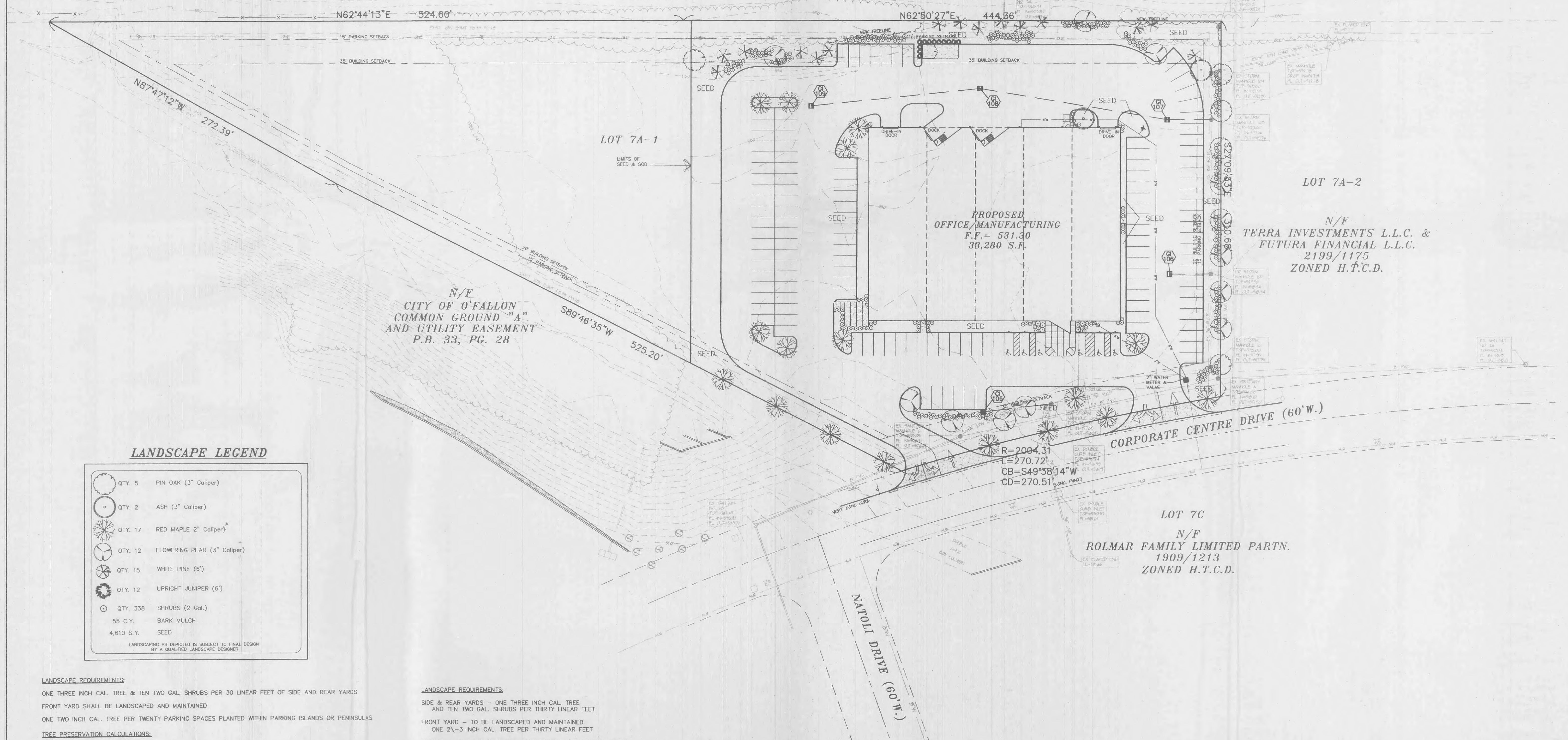


N/F  
**UNGERBOECK DEVELOPMENT L.C.**  
2268/1853  
ST. CHARLES COUNTY  
ZONED BUSINESS PARK



**LANDSCAPE LEGEND**

|  |            |                             |
|--|------------|-----------------------------|
|  | QTY. 5     | PIN OAK (3" Caliper)        |
|  | QTY. 2     | ASH (3" Caliper)            |
|  | QTY. 17    | RED MAPLE (2" Caliper)      |
|  | QTY. 12    | FLOWERING PEAR (3" Caliper) |
|  | QTY. 15    | WHITE PINE (6')             |
|  | QTY. 12    | UPRIGHT JUNIPER (6')        |
|  | QTY. 338   | SHRUBS (2 Gal.)             |
|  | 55 C.Y.    | BARK MULCH                  |
|  | 4,610 S.Y. | SEED                        |

LANDSCAPING AS DEPICTED IS SUBJECT TO FINAL DESIGN BY A QUALIFIED LANDSCAPE DESIGNER

**LANDSCAPE REQUIREMENTS:**  
ONE THREE INCH CAL. TREE & TEN TWO GAL. SHRUBS PER 30 LINEAR FEET OF SIDE AND REAR YARDS  
FRONT YARD SHALL BE LANDSCAPED AND MAINTAINED  
ONE TWO INCH CAL. TREE PER TWENTY PARKING SPACES PLANTED WITHIN PARKING ISLANDS OR PENINSULAS

**TREE PRESERVATION CALCULATIONS:**  
FIFTEEN TREES (TWO INCH CAL. OR EIGHT FEET HT.) PER ACRE  
2,128 SQ. FT. = .73 OR ONE REPLACEMENT TREE

**LANDSCAPE REQUIREMENTS:**  
SIDE & REAR YARDS - ONE THREE INCH CAL. TREE AND TEN TWO GAL. SHRUBS PER THIRTY LINEAR FEET  
FRONT YARD - TO BE LANDSCAPED AND MAINTAINED ONE 2-3 INCH CAL. TREE PER THIRTY LINEAR FEET  
PARKING - ONE TWO INCH CAL. TREE PER TWENTY PARKING SPACES PLANT WITHIN PLANTING ISLANDS OR PENINSULAS