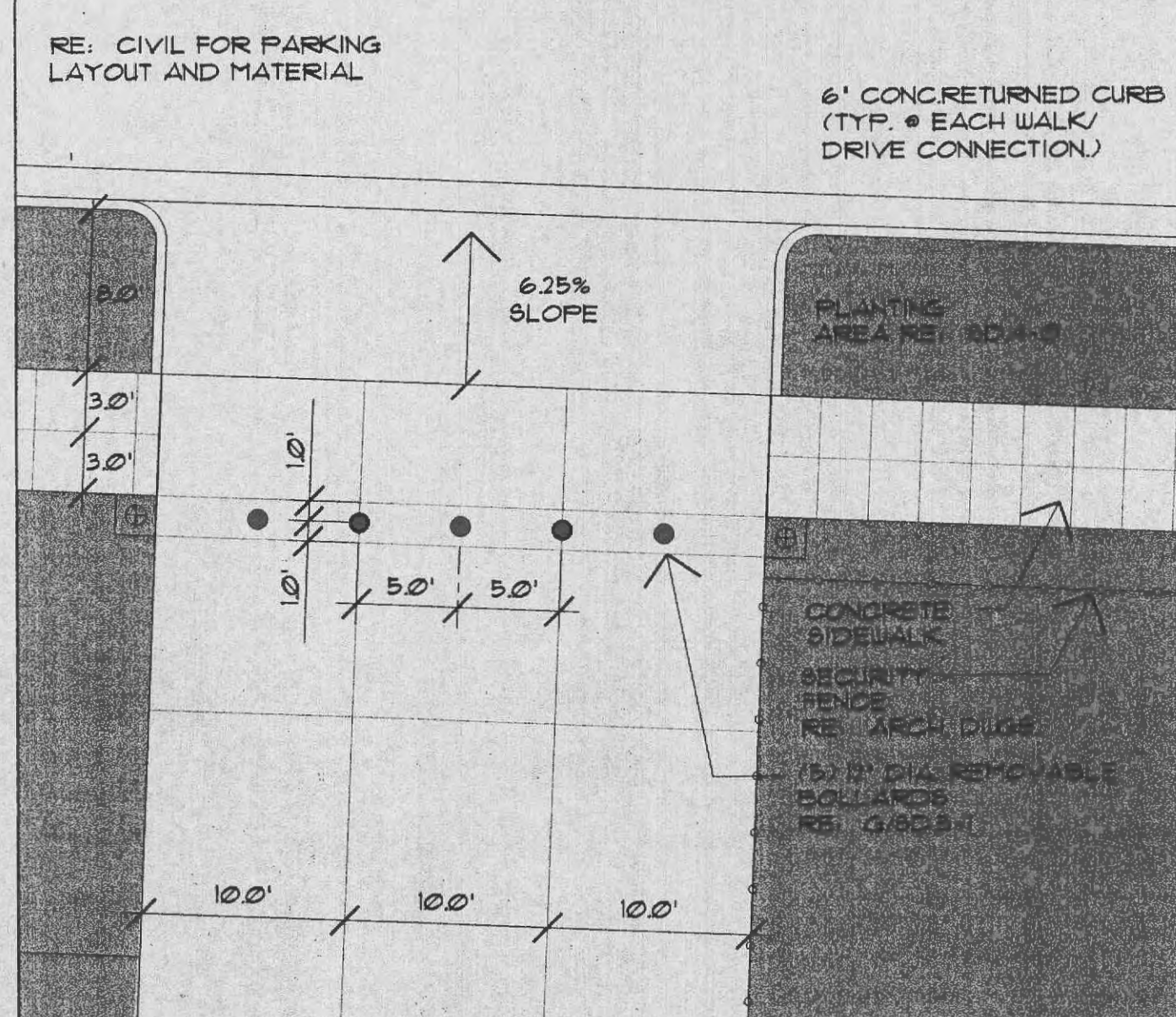
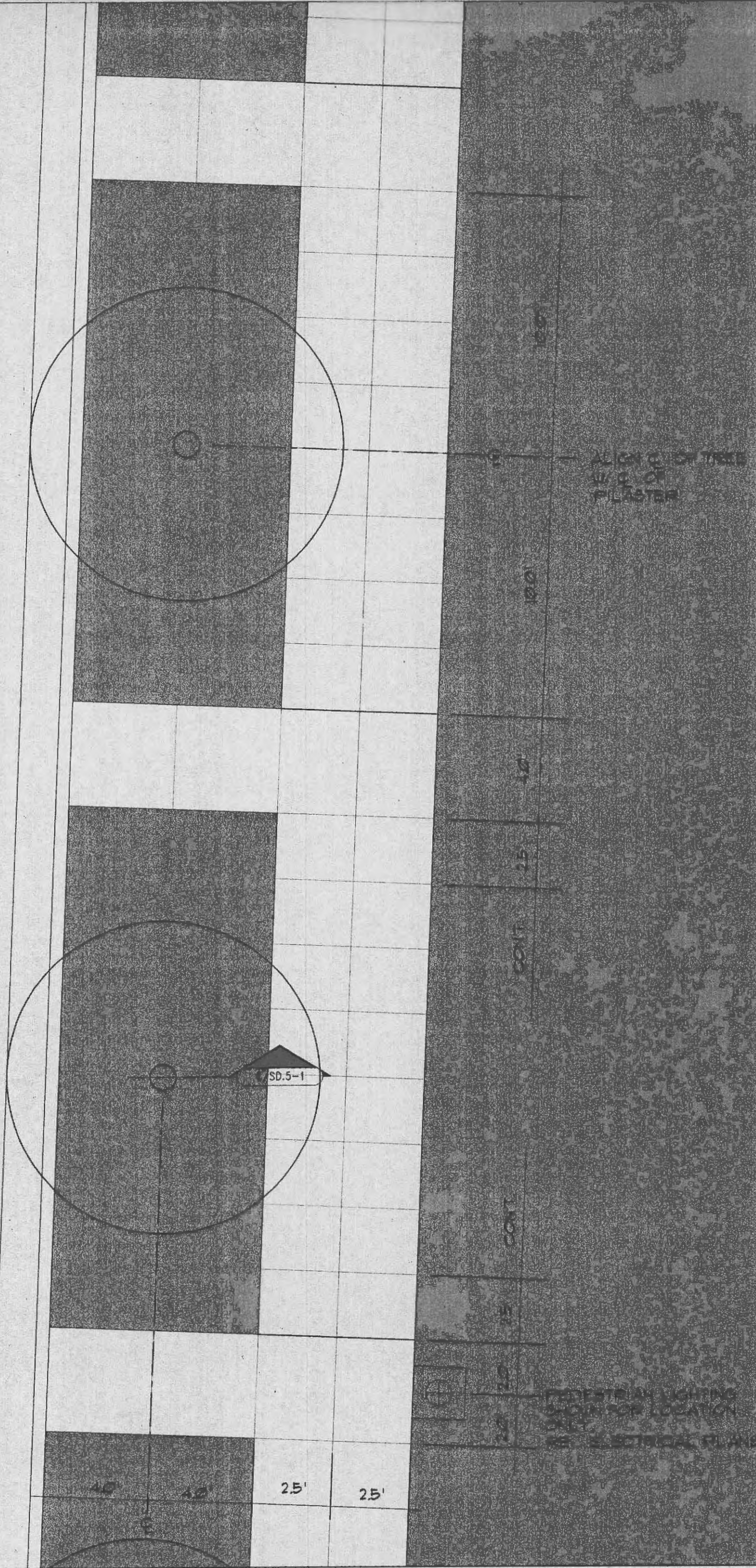


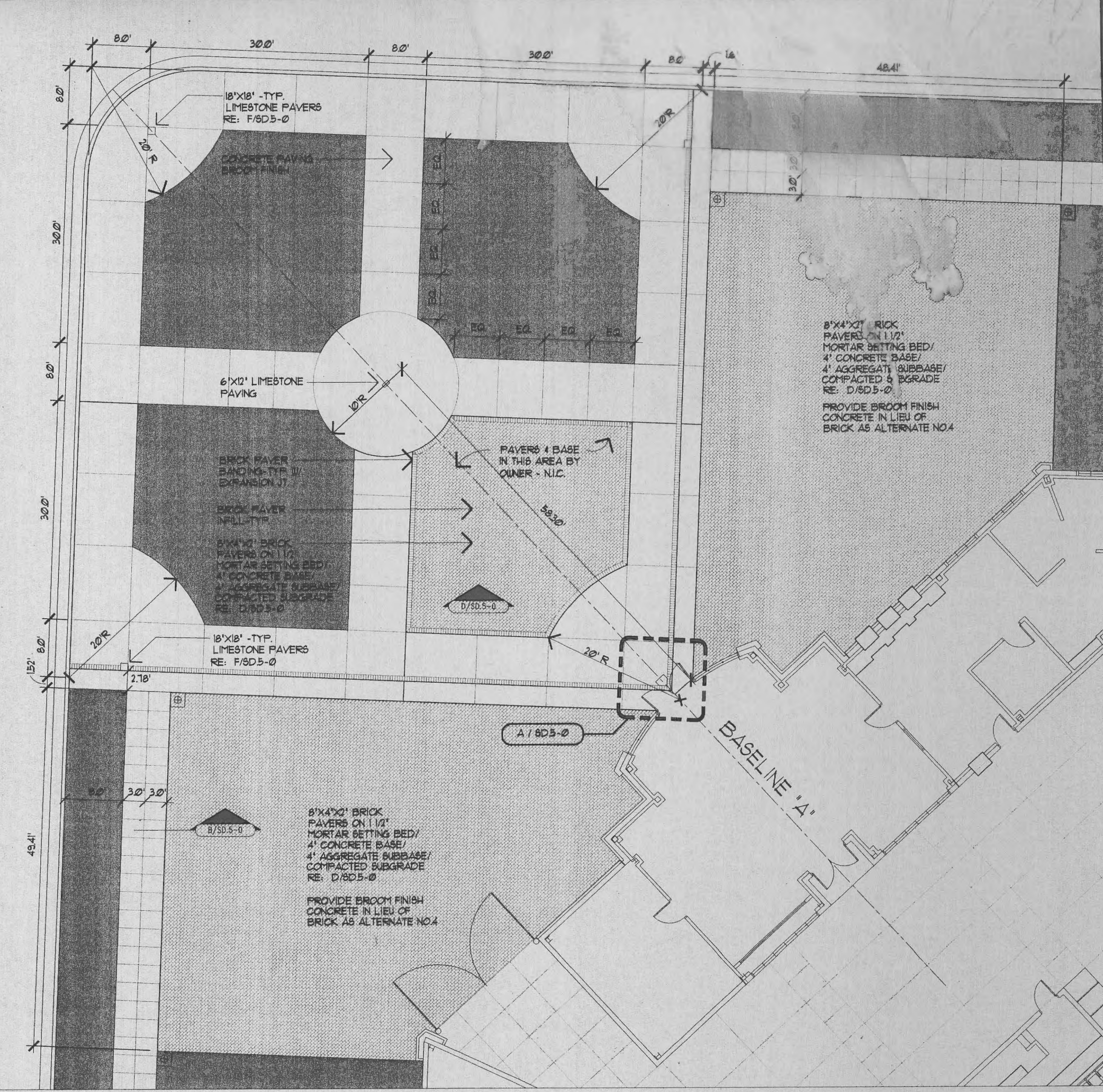
H TYPICAL CONCOURSE SCORING
PLAN SCALE: 1/8"=1'-0"



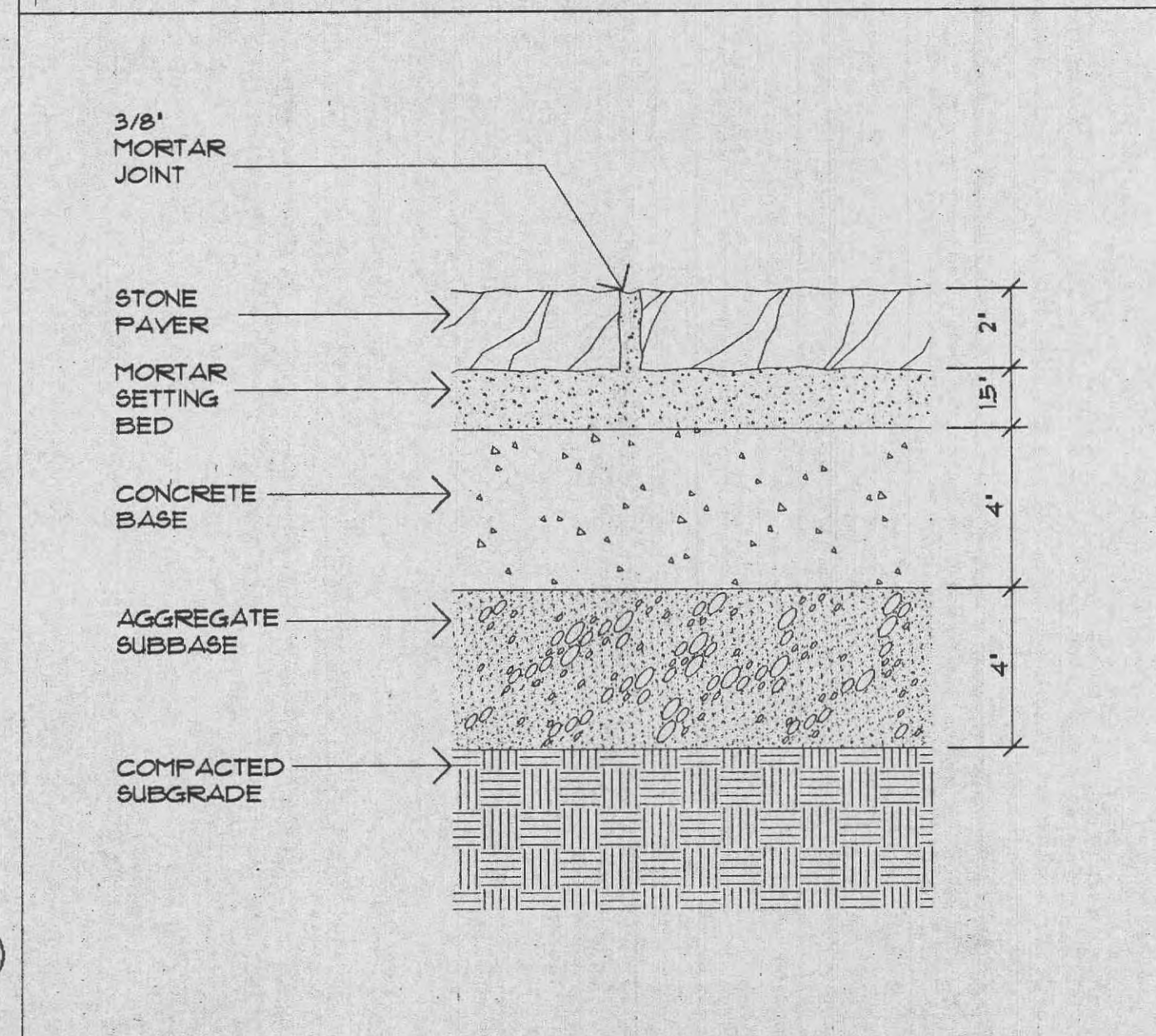
G ENLARGED PLAN
LAYOUT & MATERIALS PLAN SCALE: 1/8"=1'-0"



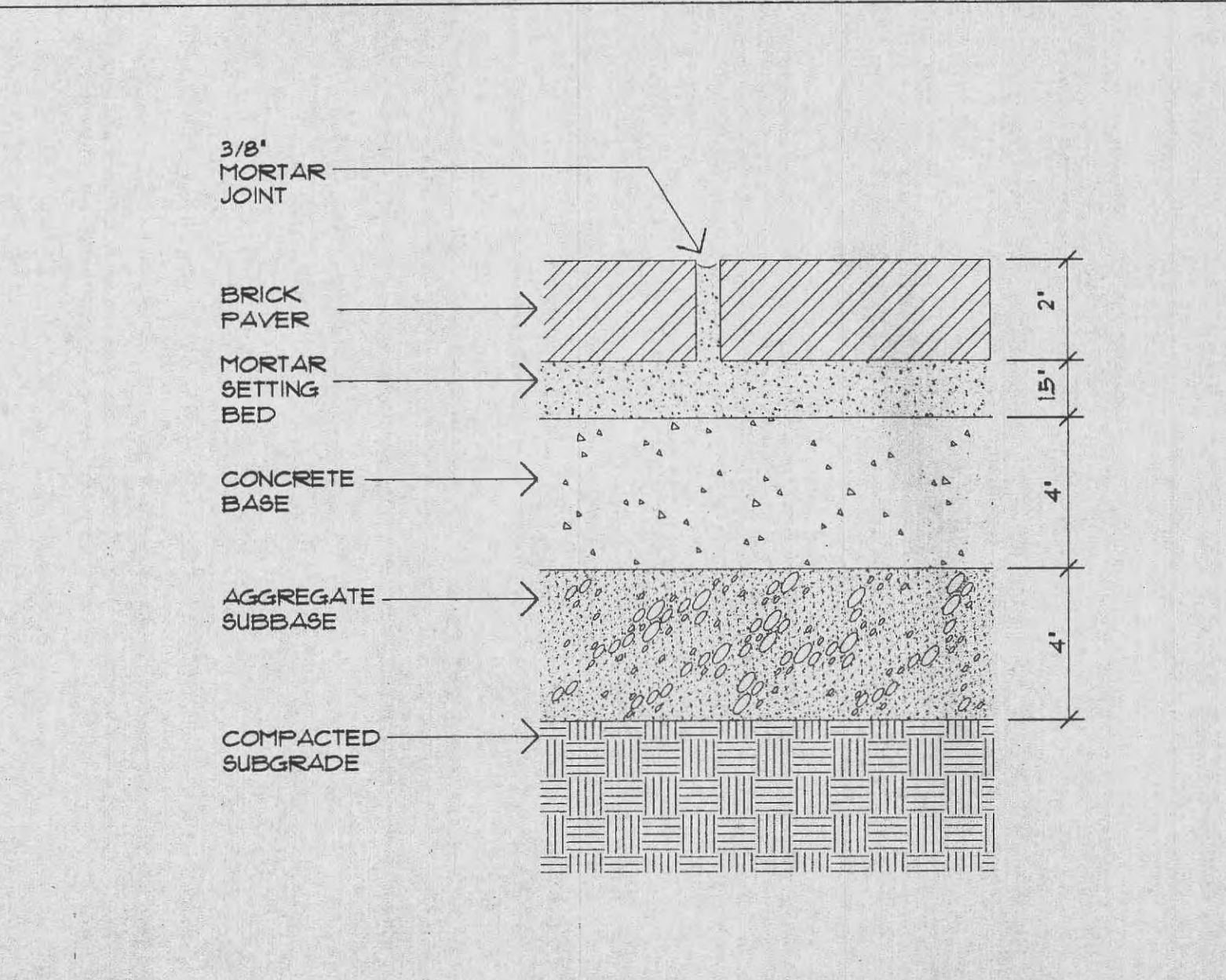
E TYPICAL CONCRETE PEDESTRIAN WALK
LAYOUT & MATERIALS PLAN SCALE: 1/4"=1'-0"



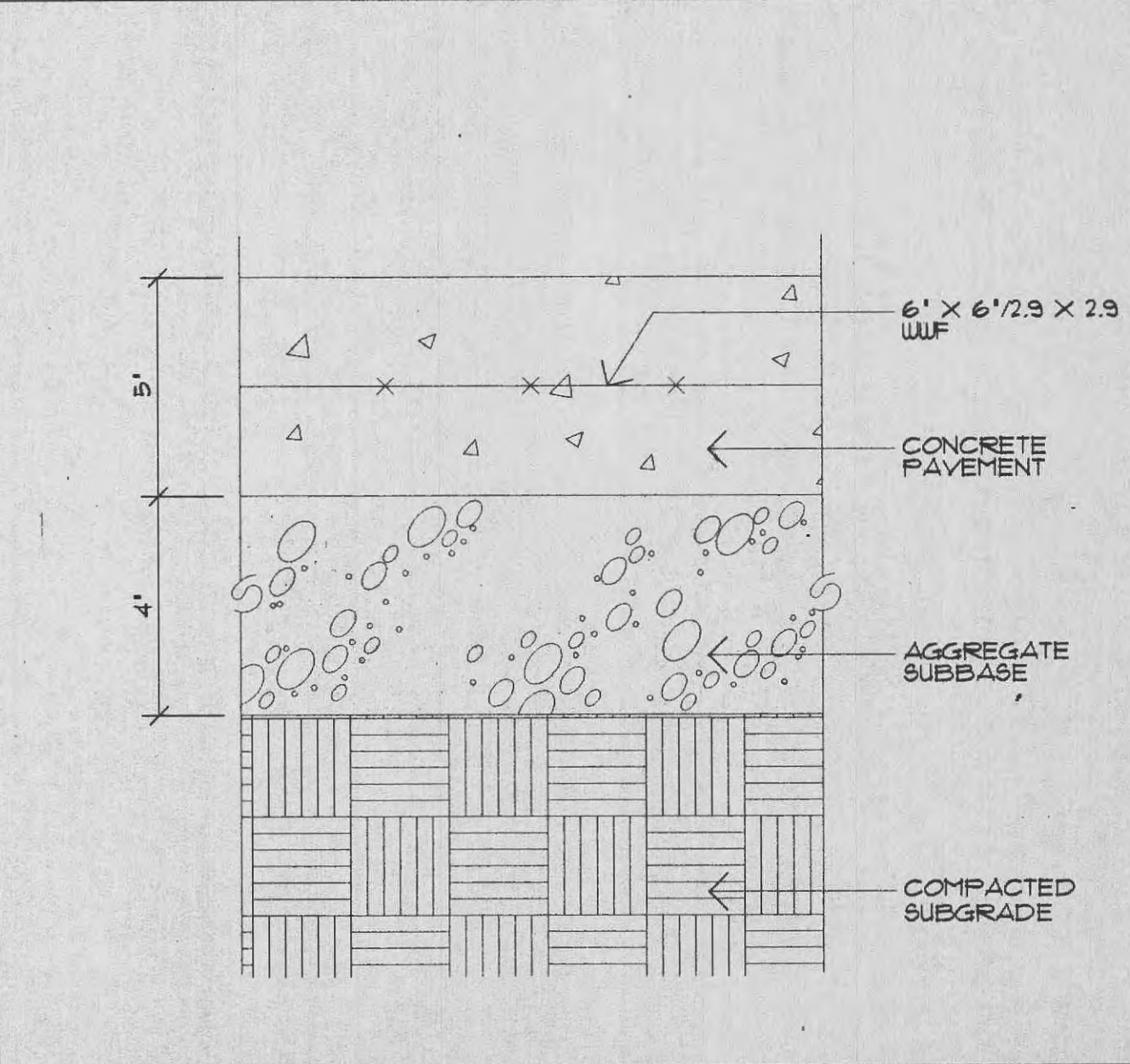
C PLAZA ENTRY
LAYOUT & MATERIALS PLAN SCALE: 1"=10'-0"



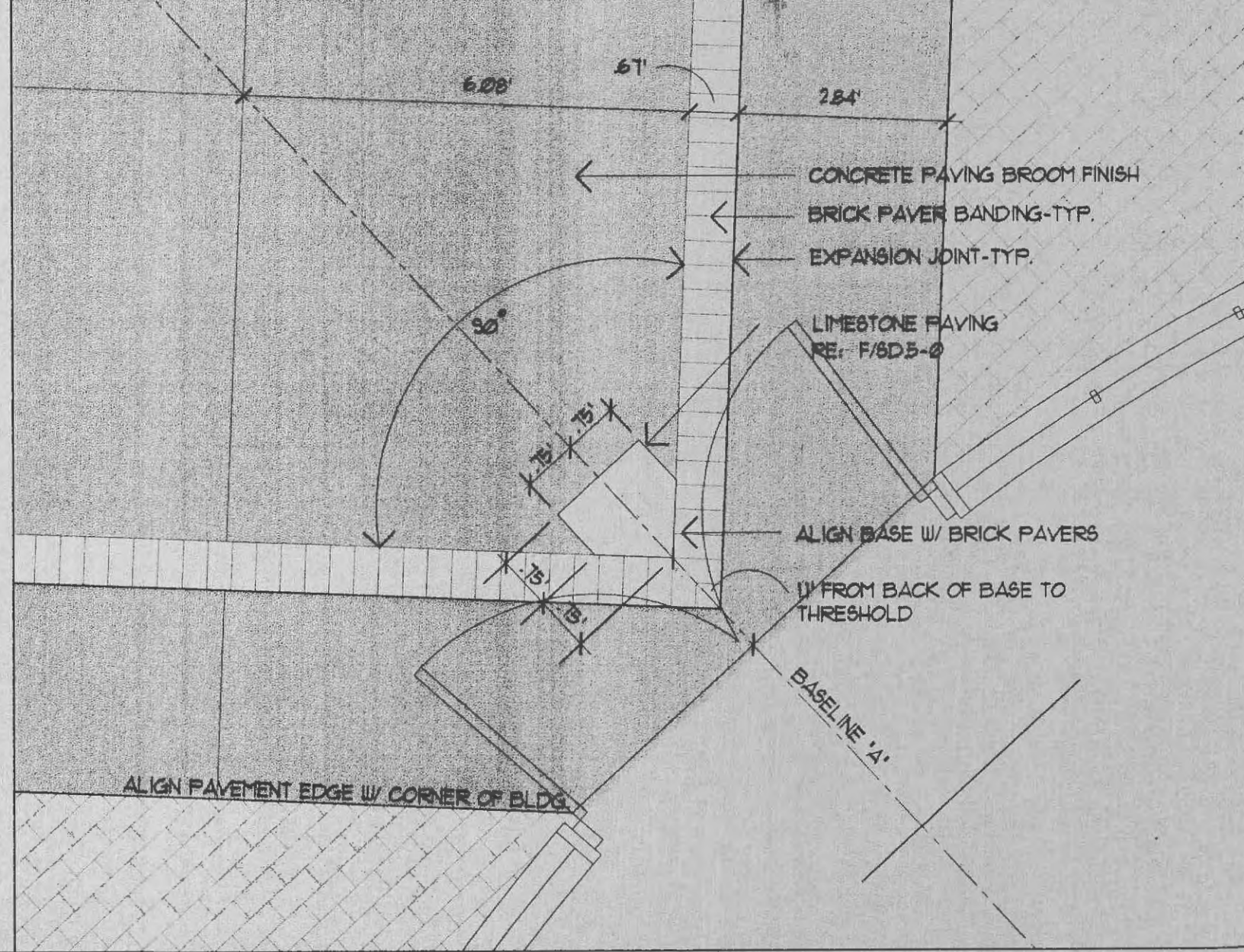
F STONE PAVING
SECTION SCALE: 1 1/2"=1'-0"



D BRICK PAVING
SECTION SCALE: 1 1/2"=1'-0"



B CONCRETE PAVEMENT
SECTION NTS



A PLAZA ENTRY
HOMEPLATE ENTRY LAYOUT SCALE: 1/2"=1'-0"

h+k
SPORT
HELLMUTH OBATA & KASSABAUM,
Architecture, Engineering, Planning,
Interiors, Facility Programming
323 West 8th Street, Suite 700
Kansas City, Missouri 64105

STRUCTURAL ENGINEER
Kerr Conrad Graham Associates
801 Walnut - Suite 301
Kansas City, Missouri 64106

MECHANICAL/ELECTRICAL/PLUMBING
Bredon & Associates
9500 63rd Super - Suite 214
Raytown, Missouri 64133

CIVIL ENGINEER
George Huder Associates, Inc.
225 South Main Street - Suite 200
O'Fallon, Missouri 63366-2992

T. R. HUGHES BALLPARK
AT THE OZZIE SMITH SPORTS COMPLEX

for the River City Rascals

PACKAGE	REVISIONS	NO.	DATE	DESCRIPTION

PROJECT NO. 97-0761-00	ISSUED BY: HOK SPORT
DRAWN BY:	REVIEWED BY:
ISSUED: JULY 7, 1998	
SHEET TITLE	

SITE
DETAILS & ENLARGED
PLANS

CATEGORY - SUB-CATEGORY - SH
SD.5-0