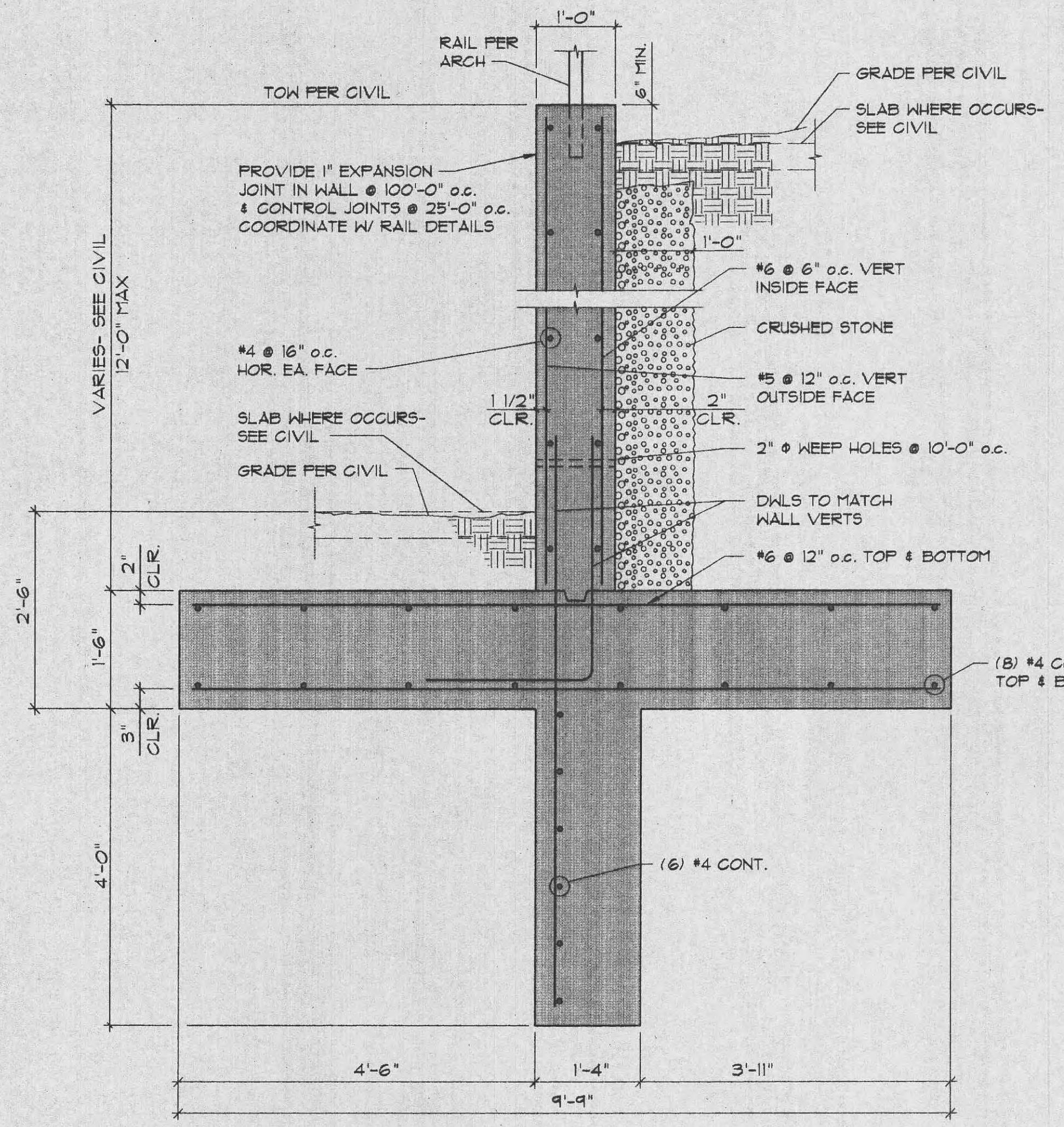
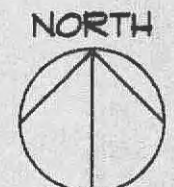


SECT 1
3/4" = 1'-0" S2.1A



SECT 2
3/4" = 1'-0" S2.1A

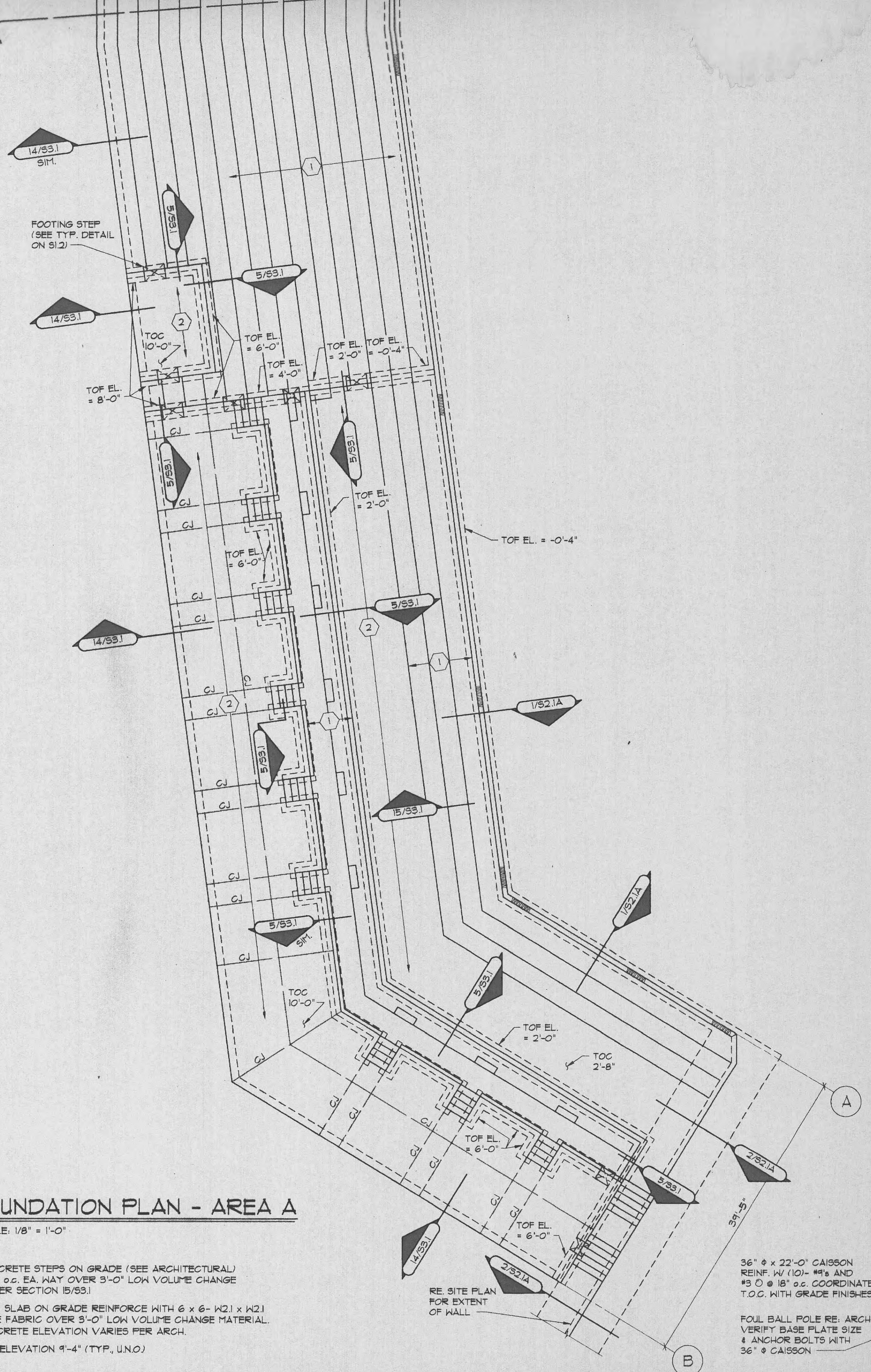


FOUNDATION PLAN - AREA A

SCALE: 1/8" = 1'-0"

PLAN NOTES:

1. 5" (MIN) CONCRETE STEPS ON GRADE (SEE ARCHITECTURAL) WITH #3 @ 18" o.c. EA. WAY OVER 3'-0" LOW VOLUME CHANGE MATERIAL. PER SECTION 15/53.1
2. 4" CONCRETE SLAB ON GRADE REINFORCE WITH 6 x 6- W2.1 x W2.1 WELDED WIRE FABRIC OVER 3'-0" LOW VOLUME CHANGE MATERIAL. TOP OF CONCRETE ELEVATION VARIES PER ARCH.
3. TOP OF FTG. ELEVATION 9'-4" (TYP. U.N.O.)



P:\87420\500\808552-1A.dwg 07 07 1998 at 10:54

Kerr Conrad Graham ASSOCIATES
 CONSULTING ENGINEERS, INC.
 8008 FLOYD OVERLAND PARK, KANSAS 66204
 913-341-5833
 744-213-3411-9222
 THIS DRAWING SHALL NOT BE REPRODUCED OR MODIFIED FOR USE AS A SHOP DRAWING
 Copyright © 1998

HOK SPORT
 HELLMUTH OBATA & KASSABAUM, INC.
 Architecture, Engineering, Planning, Interiors, Facility Programming
 323 West 8th Street, Suite 700
 Kansas City, Missouri 64105

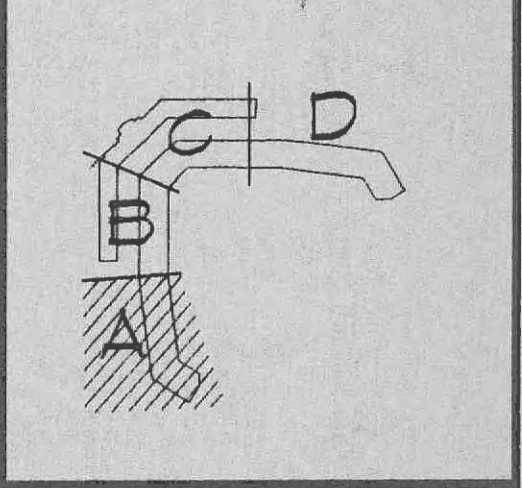
STRUCTURAL ENGINEER
 Kerr Conrad Graham Associates
 901 Walnut - Suite 302
 Kansas City, Missouri 64105

MECHANICAL/ELECTRICAL/PLUMBING
 Bredon & Associates
 6808 83rd Street - Suite 214
 Raytown, Missouri 64133

CIVIL ENGINEER
 George Butler Associates, Inc.
 225 South Main Street - Suite 200
 O'Fallon, Missouri 63366-0666

T. R. HUGHES BALLPARK
 AT THE OZZIE SMITH SPORTS COMPLEX
 FOR THE RIVER CITY RASCALS
 O'FALLON, MO.

PACKAGE NO.	REVISIONS	DATE	DESCRIPTION



PROJECT NO. 97-0761-00	ISSUED BY: HOK SPORT
DRAWN BY:	REVIEWED BY:

ISSUED: 07-7-98

FOUNDATION PLAN AREA A

CATEGORY - SUB-CATEGORY - SHEET
S 21 A