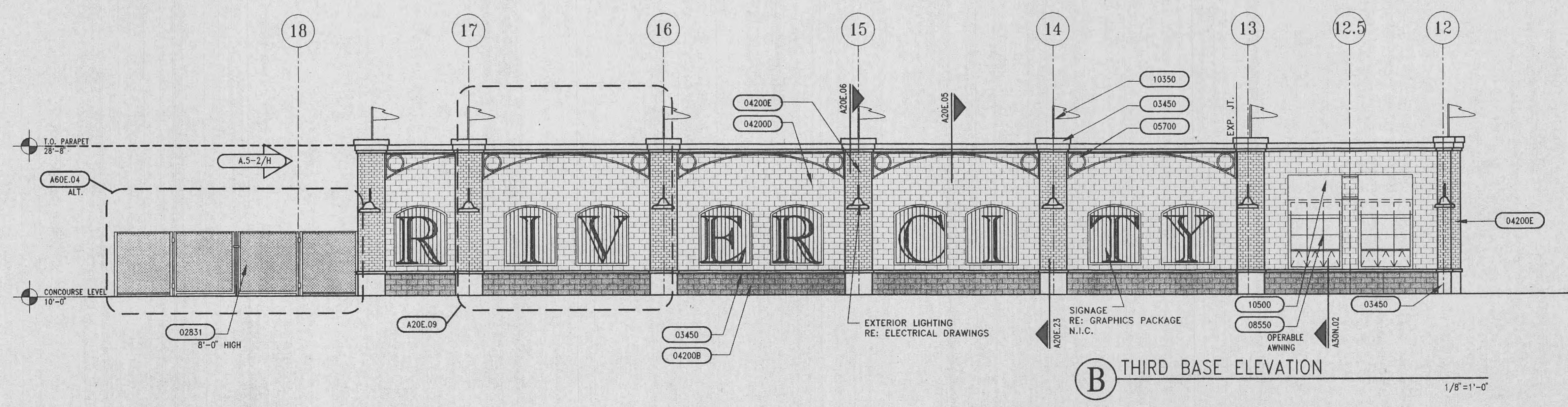
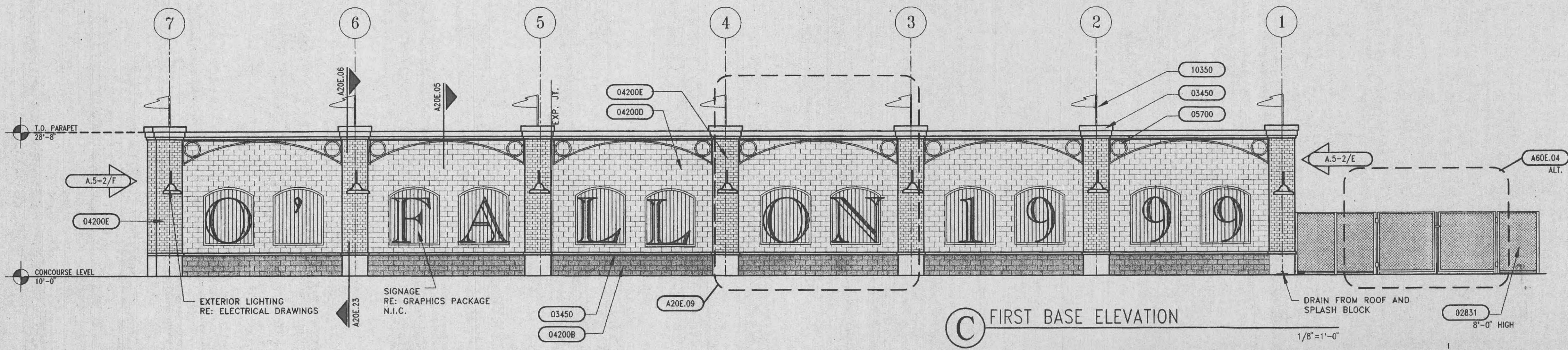


A HOME PLATE ELEVATION
1/8"=1'-0"



B THIRD BASE ELEVATION
1/8"=1'-0"



C FIRST BASE ELEVATION
1/8"=1'-0"

- KEYNOTES**
- DIVISION 2
 - 02200 EARTHWORK
 - 02282 TERMITE CONTROL
 - 02320 PORTLAND CEMENT CONCRETE PAVING
 - 02521 IMPRINTED CONCRETE PAVING
 - 02780 UNIT PAVERS
 - 02831 CHAIN LINK FENCES AND GATE
 - 02910 NATURAL TURF PLAYING FIELD SYSTEM
 - DIVISION 3
 - 03300 CAST IN PLACE CONCRETE
 - 03350 CONCRETE TOPPING
 - 03450 ARCHITECTURAL PRECAST CONCRETE
 - DIVISION 4
 - 04200A UNIT MASONRY
 - 04200B UNIT MASONRY
 - 04200C UNIT MASONRY
 - 04200E UNIT MASONRY
 - DIVISION 5
 - 05120 STRUCTURAL STEEL
 - 05210 STEEL JOIST
 - 05310 METAL DECKING
 - 05400 COLD-FORMED METAL FRAMING
 - 05400 METAL FABRICATION
 - 05521 PIPE RAILINGS
 - 05530 GRATING
 - 05700 ORNAMENTAL METALWORK
 - 05720 ORNAMENTAL HANDRAILS AND RAILINGS
 - 05810 EXPANSION JOINT COVER ASSEMBLIES
 - DIVISION 6
 - 06105 MISC. CARPENTRY
 - 06400 ARCHITECTURAL WOODWORK
 - DIVISION 7
 - 07160 BITUMINOUS DAMPROOFING
 - 07180 WATER REPELLENTS
 - 07210 BUILDING INSULATION
 - 07521 EPDM SINGLE PLY MEMBRANE ROOFING
 - 07620 SHEET METAL FLASHING AND TRIM
 - 07710 MANUFACTURED ROOF SPECIALTIES
 - 07720 ROOF ACCESSORIES
 - 07901 JOINT SEALANTS
 - DIVISION 8
 - 08110 STEEL DOORS AND FRAMES
 - 08211 FLUSH WOOD DOORS
 - 08200 ACCESS DOORS
 - 08330 OVERHEAD COILING DOORS
 - 08333 OVERHEAD COILING SHUTTERS
 - 08410 ALUMINUM ENTRANCES AND STOREFRONT
 - 08520 ALUMINUM WINDOWS
 - 08550 WOOD WINDOWS
 - 08665 SECURITY WINDOWS
 - 08710 FINISH HARDWARE
 - 08800 GLAZING
 - 08830 MIRRORRED GLASS
 - DIVISION 9
 - 09255 GYPSUM BOARD ASSEMBLIES
 - 09310 CERAMIC TILE
 - 09510 ACOUSTICAL CEILINGS
 - 09635 RESILIENT WALL BASE AND ACCESSORIES
 - 09680 CARPET
 - 09780 FLOOR SEALERS
 - 09800 SPECIAL COATINGS
 - 09810 FERROUS METAL SPECIAL COATINGS
 - 09815 HAZARD STRIPING
 - 09900 PAINTING
 - DIVISION 10
 - 10135 TOILET COMPARTMENTS
 - 10350 FLAGPOLES
 - 10500 CANOPIES
 - 10522 FIRE EXTINGUISHERS, CABINETS & ACCESSORIES
 - 10800 TOILET ACCESSORIES
 - DIVISION 11
 - 11452 RESIDENTIAL EQUIPMENT
 - 11480 STADIUM GAME EQUIPMENT
 - 11481 FIELDWALL PADS
 - 11485 SCOREBOARDS
 - 11486 VIDEO BOARDS
 - DIVISION 12
 - 12810 STADIUM CHAIRS
 - 12820 BENCH SEATING
 - DIVISION 13
 - NONE INCLUDED
 - DIVISION 14
 - 14420 WHEELCHAIR LIFTS

h+k

SPORT

HELLMUTH OBATA & KASSABAUM, INC.
Architecture, Engineering, Planning,
Interiors, Facility Programming
323 West 8th Street, Suite 700
Kansas City, Missouri 64105

STRUCTURAL ENGINEER
Ken Conrad GmbH Associates
801 Walker - Suite 301
Kansas City, Missouri 64106

MECHANICAL/ELECTRICAL PLUMBING
Readman & Associates
9303 53rd Avenue - Suite 214
Raytown, Missouri 64133

CIVIL ENGINEER
George Decker Associates, Inc.
223 South Main Street - Suite 200
O'Fallon, Missouri 63366-2992

T. R. HUGHES BALLPARK
AT THE OZZIE SMITH SPORTS COMPLEX

for the River City Rascals
OF FALLON, MO.

BID PACKAGE #1

PACKAGE REVISIONS	NO.	DATE	DESCRIPTION

PROJECT NO. 97-0761-00 ISSUED BY: HOK SPORT
DRAWN BY: REVIEWED BY:

ISSUED: July 7, 1998
SHEET TITLE

BUILDING ELEVATIONS

CATEGORY - SUB-CATEGORY - SHEET

A.5-1