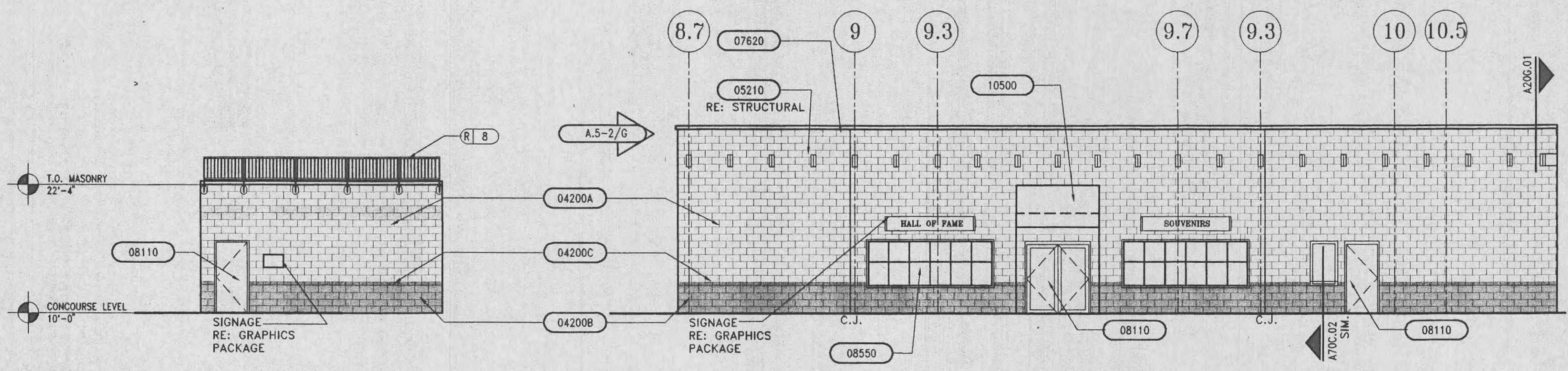
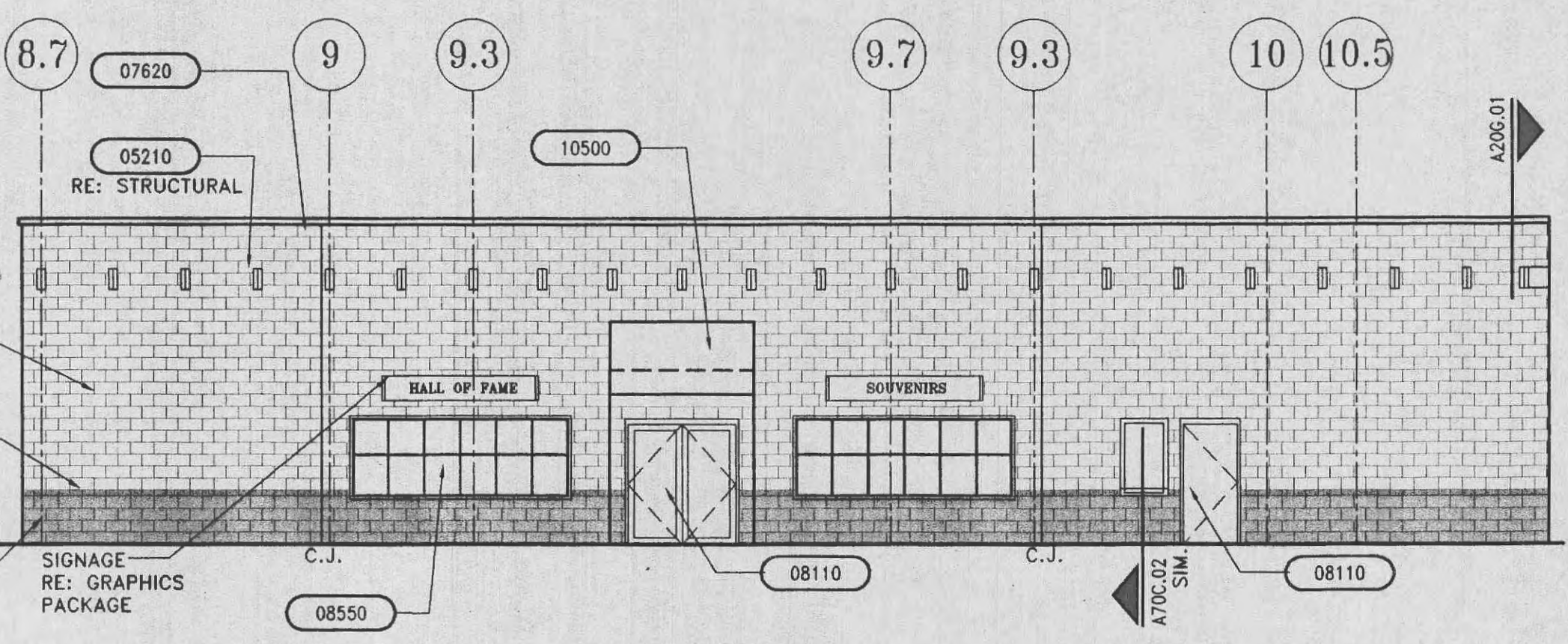


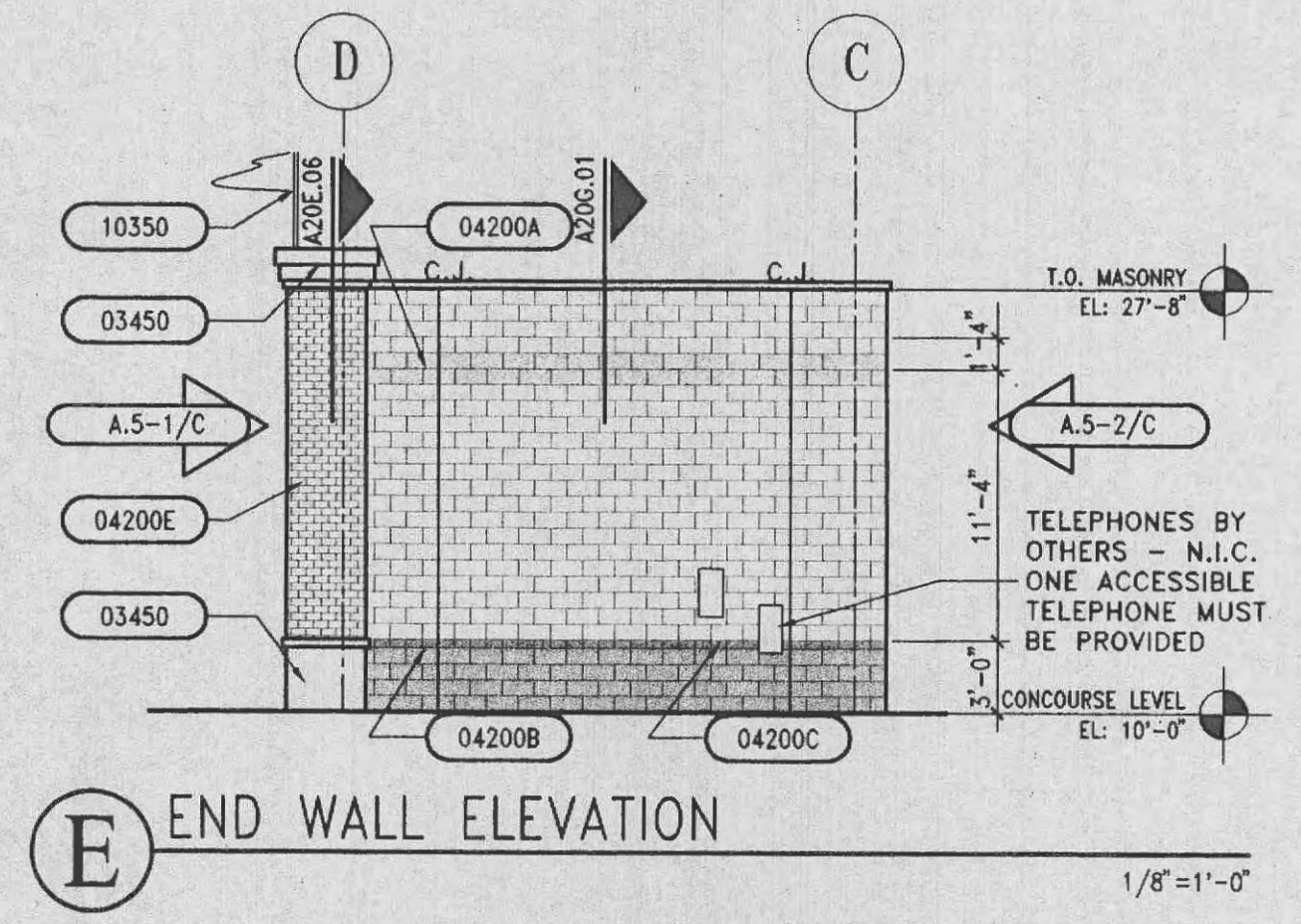
**A** CONCOURSE ELEVATION @ FIRST BASE  
1/8"=1'-0"



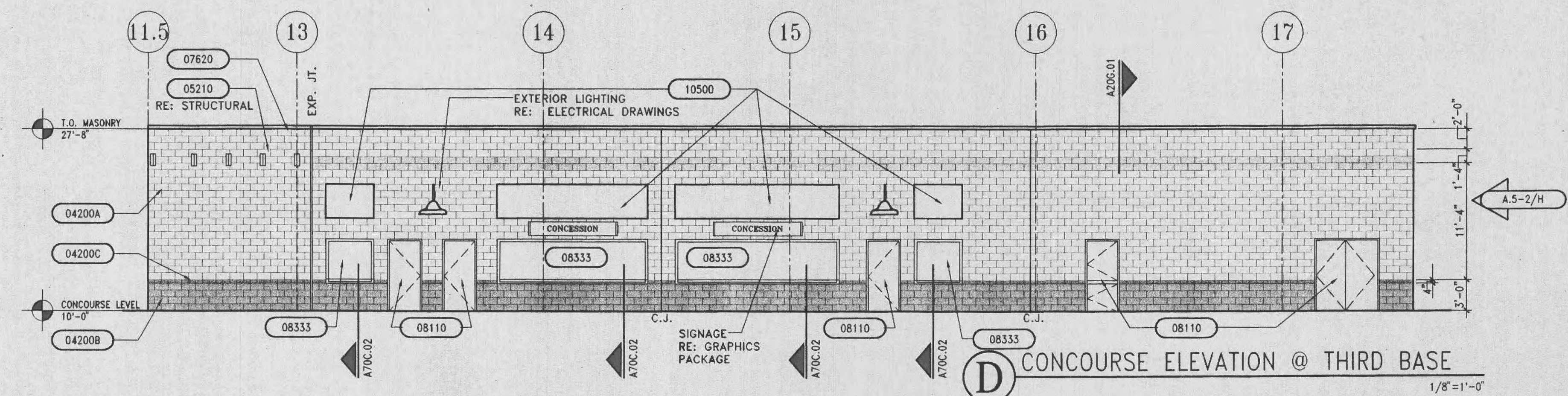
**B** PRESS BOOTH ELEVATION  
1/8"=1'-0"



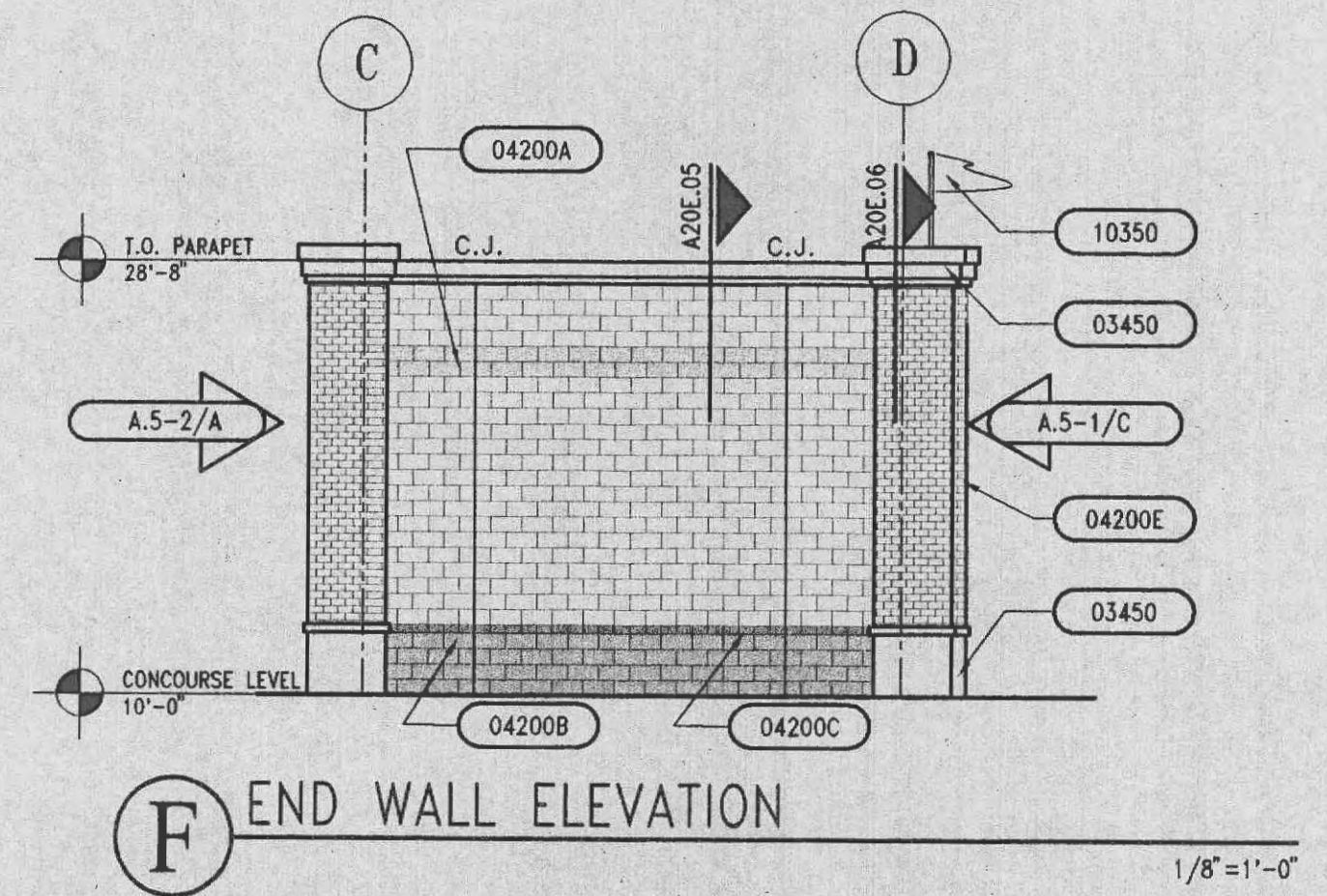
**C** HALL OF FAME ELEVATION  
1/8"=1'-0"



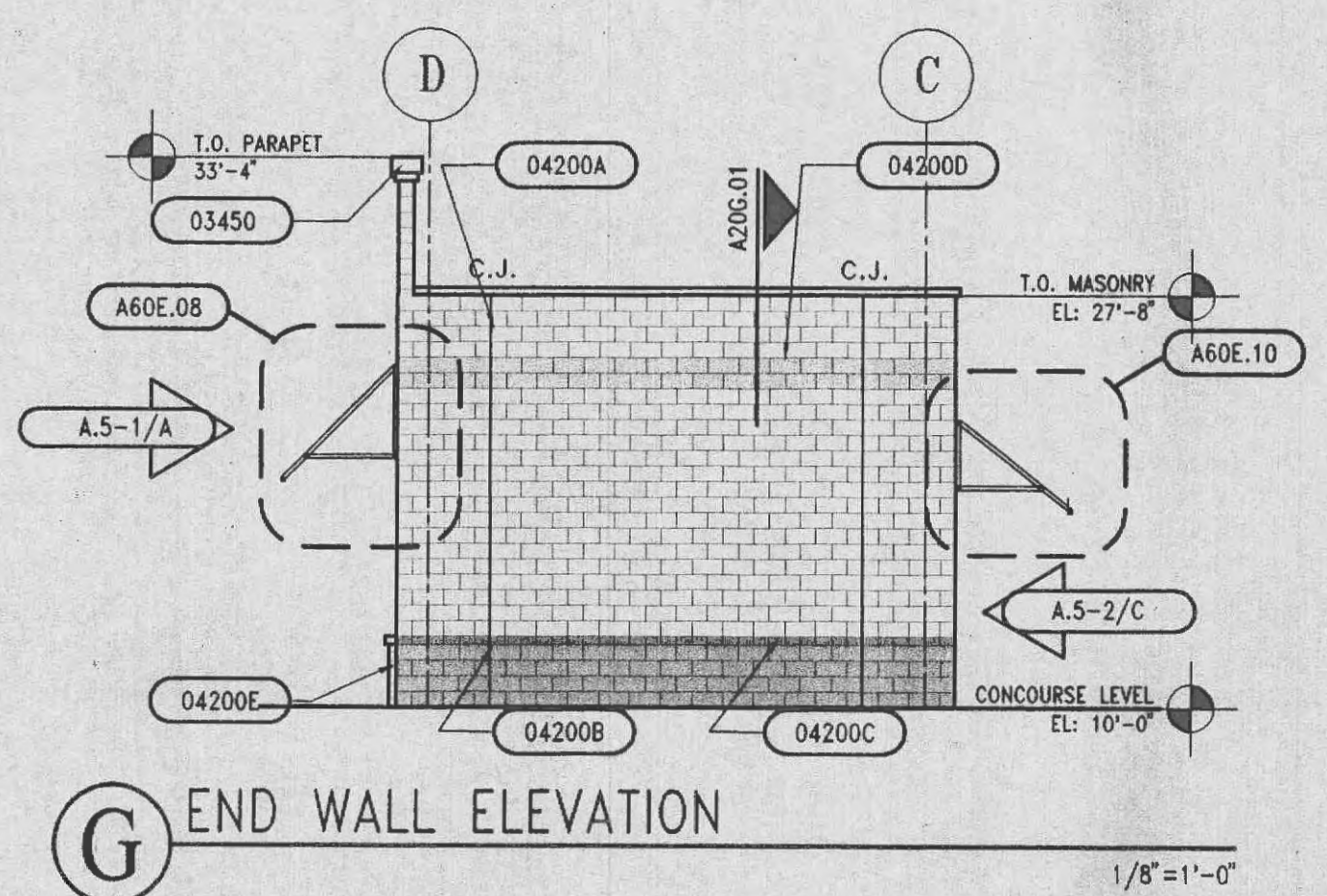
**E** END WALL ELEVATION  
1/8"=1'-0"



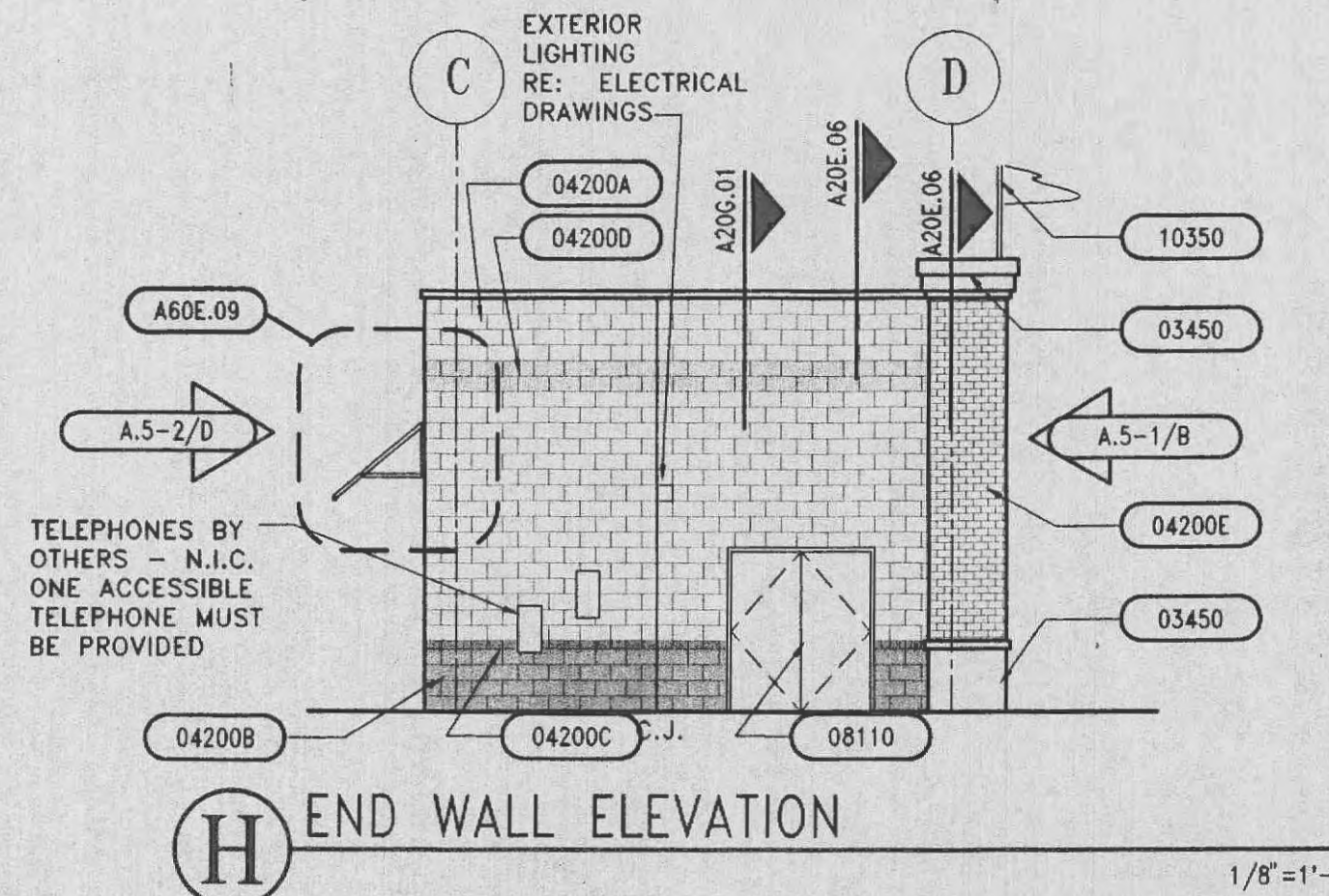
**D** CONCOURSE ELEVATION @ THIRD BASE  
1/8"=1'-0"



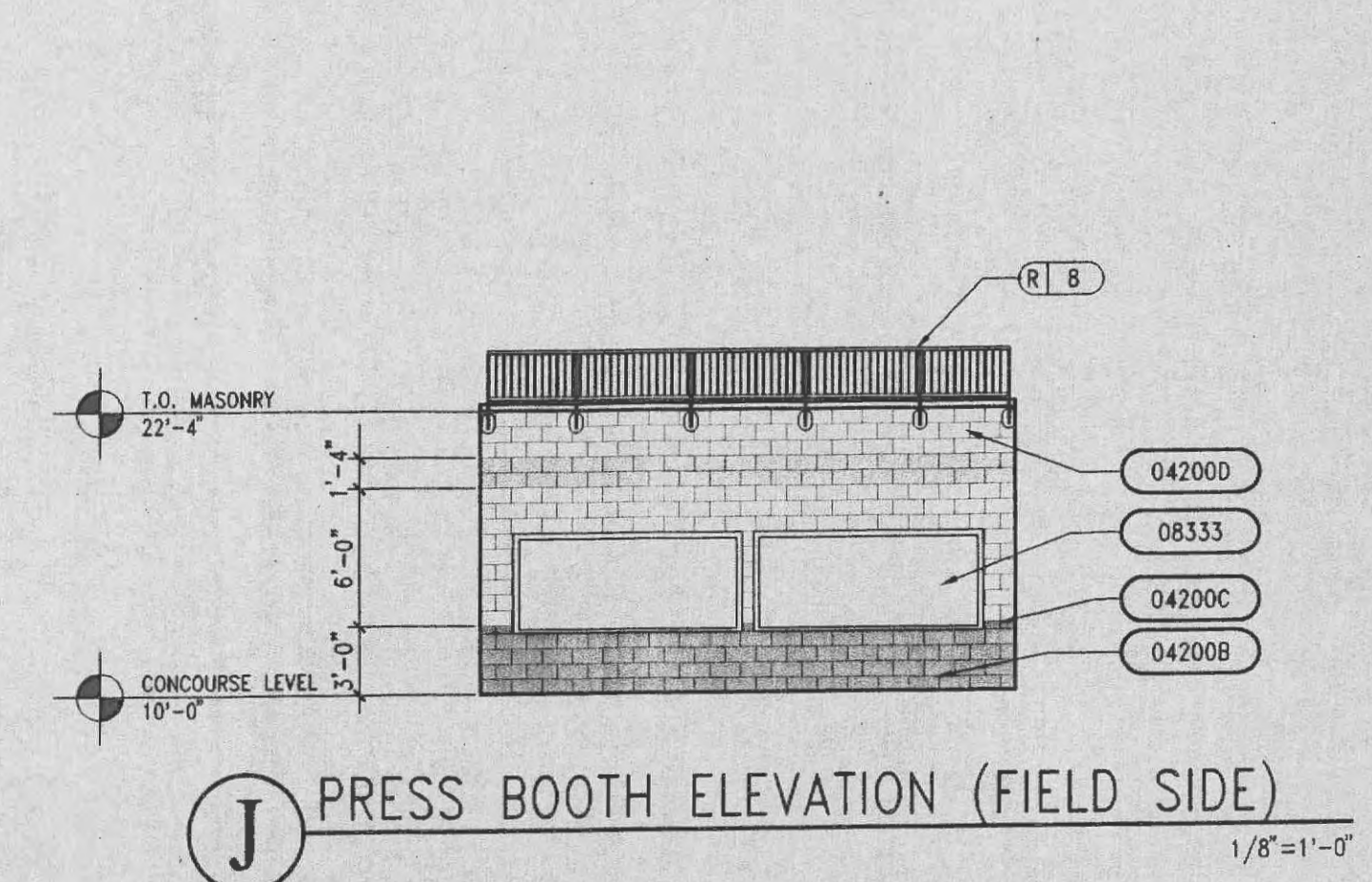
**F** END WALL ELEVATION  
1/8"=1'-0"



**G** END WALL ELEVATION  
1/8"=1'-0"



**H** END WALL ELEVATION  
1/8"=1'-0"



**J** PRESS BOOTH ELEVATION (FIELD SIDE)  
1/8"=1'-0"

**KEYNOTES**

**DIVISION 2**

- 02200 EARTHWORK
- 02282 TERMITE CONTROL
- 02520 PORTLAND CEMENT CONCRETE PAVING
- 02521 IMPRINTED CONCRETE PAVING
- 02780 UNIT PAVERS
- 02831 CHAIN LINK FENCES AND GATE
- 02910 NATURAL TURF PLAYING FIELD SYSTEM

**DIVISION 3**

- 03300 CAST IN PLACE CONCRETE
- 03350 CONCRETE TOPPING
- 03450 ARCHITECTURAL PRECAST CONCRETE

**DIVISION 4**

- 04200A UNIT MASONRY
- 04200B UNIT MASONRY
- 04200C UNIT MASONRY
- 04200D UNIT MASONRY
- 04200E UNIT MASONRY

**DIVISION 5**

- 05120 STRUCTURAL STEEL
- 05210 STEEL JOIST
- 05310 METAL DECKING
- 05400 COLD-FORMED METAL FRAMING
- 05500 METAL FABRICATION
- 05521 PIPE RAILINGS
- 05530 GRATINGS
- 05700 ORNAMENTAL METALWORK
- 05720 ORNAMENTAL HANDRAILS AND RAILINGS
- 05810 EXPANSION JOINT COVER ASSEMBLIES

**DIVISION 6**

- 06105 MISC. CARPENTRY
- 06400 ARCHITECTURAL WOODWORK

**DIVISION 7**

- 07160 BITUMINOUS DAMPROOFING
- 07180 WATER REPELLENTS
- 07210 BUILDING INSULATION
- 07531 EPDM SINGLE PLY MEMBRANE ROOFING
- 07620 SHEET METAL FLASHING AND TRIM
- 07710 MANUFACTURED ROOF SPECIALTIES
- 07720 ROOF ACCESSORIES
- 07901 JOINT SEALANTS

**DIVISION 8**

- 08110 STEEL DOORS AND FRAMES
- 08211 FLUSH WOOD DOORS
- 08305 ACCESS DOORS
- 08330 OVERHEAD COILING DOORS
- 08333 OVERHEAD COILING SHUTTERS
- 08410 ALUMINUM ENTRANCES AND STOREFRONT
- 08520 ALUMINUM WINDOWS
- 08550 WOOD WINDOWS
- 08685 SECURITY WINDOWS
- 08710 FINISH HARDWARE
- 08800 GLAZING
- 08830 MIRROR GLASS

**DIVISION 9**

- 09255 GYPSUM BOARD ASSEMBLIES
- 09310 CERAMIC TILE
- 09510 ACOUSTICAL CEILINGS
- 09635 RESILIENT WALL BASE AND ACCESSORIES
- 09880 CARPET
- 09780 FLOOR SEALERS
- 09800 SPECIAL COATINGS
- 09810 FERROUS METAL SPECIAL COATINGS
- 09815 HAZARD STRIPPING
- 09900 PAINTING

**DIVISION 10**

- 10155 TOILET COMPARTMENTS
- 10350 FLAGPOLES
- 10500 CANOPIES
- 10522 FIRE EXTINGUISHERS, CABINETS & ACCESSORIES
- 10800 TOILET ACCESSORIES

**DIVISION 11**

- 11452 RESIDENTIAL EQUIPMENT
- 11480 STADIUM GAME EQUIPMENT
- 11481 FIELDWALL PADS
- 11485 SCOREBOARDS
- 11486 VIDEO BOARDS

**DIVISION 12**

- 12810 STADIUM CHAIRS
- 12820 BENCH SEATING

**DIVISION 13**

- NONE INCLUDED

**DIVISION 14**

- 14420 WHEELCHAIR LIFTS

**HOK**  
**h+k**

**SPORT**

HELLMUTH OBATA & KASSABAUM, INC.  
Architecture, Engineering, Planning,  
Interiors, Facility Programming  
323 West 8th Street, Suite 700  
Kansas City, Missouri 64105

STRUCTURAL ENGINEER  
Kerr Conrad Chasen Associates  
801 Walnut - Suite 301  
Kansas City, Missouri 64106

MECHANICAL/ELECTRICAL/PLUMBING  
Bridges & Associates  
3908 Kiah Street - Suite 214  
Raytown, Missouri 64133

CIVIL ENGINEER  
George Butler Associates, Inc.  
223 South Main Street - Suite 200  
O'Fallon, Missouri 63366-2892

**T. R. HUGHES BALLPARK**  
**AT THE OZZIE SMITH SPORTS COMPLEX**

for the River City Rascals  
O'FALLON, MO.

BID PACKAGE #1

NO.	DATE	DESCRIPTION

PROJECT NO. 97-0761-00	ISSUED BY: HOK SPORT
DRAWN BY:	REVIEWED BY:
ISSUED: JUNE 22, 1998	
SHEET TITLE	

CONCOURSE ELEVATIONS

CATEGORY - SUB-CATEGORY - SHEET

**A.5-2**