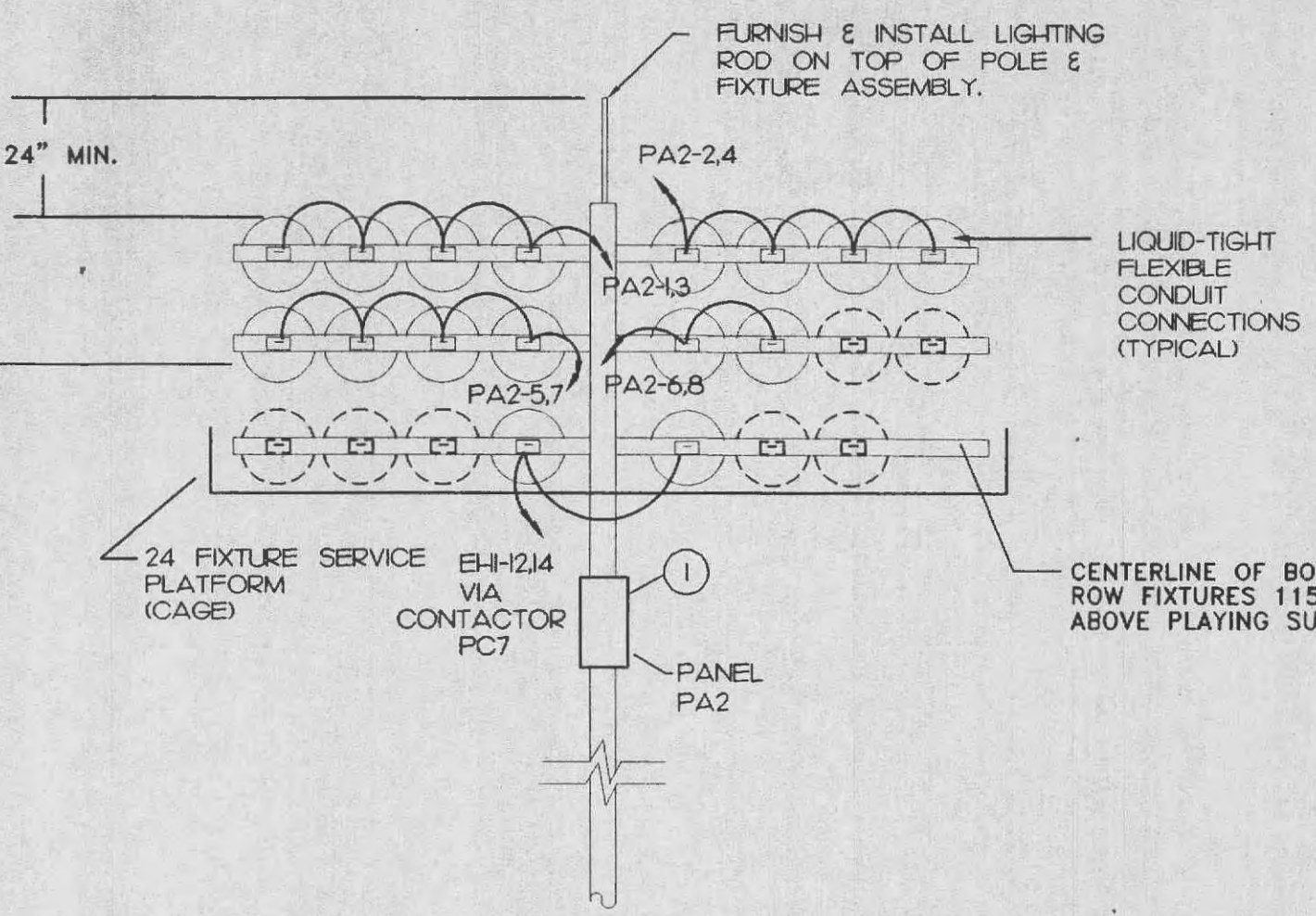
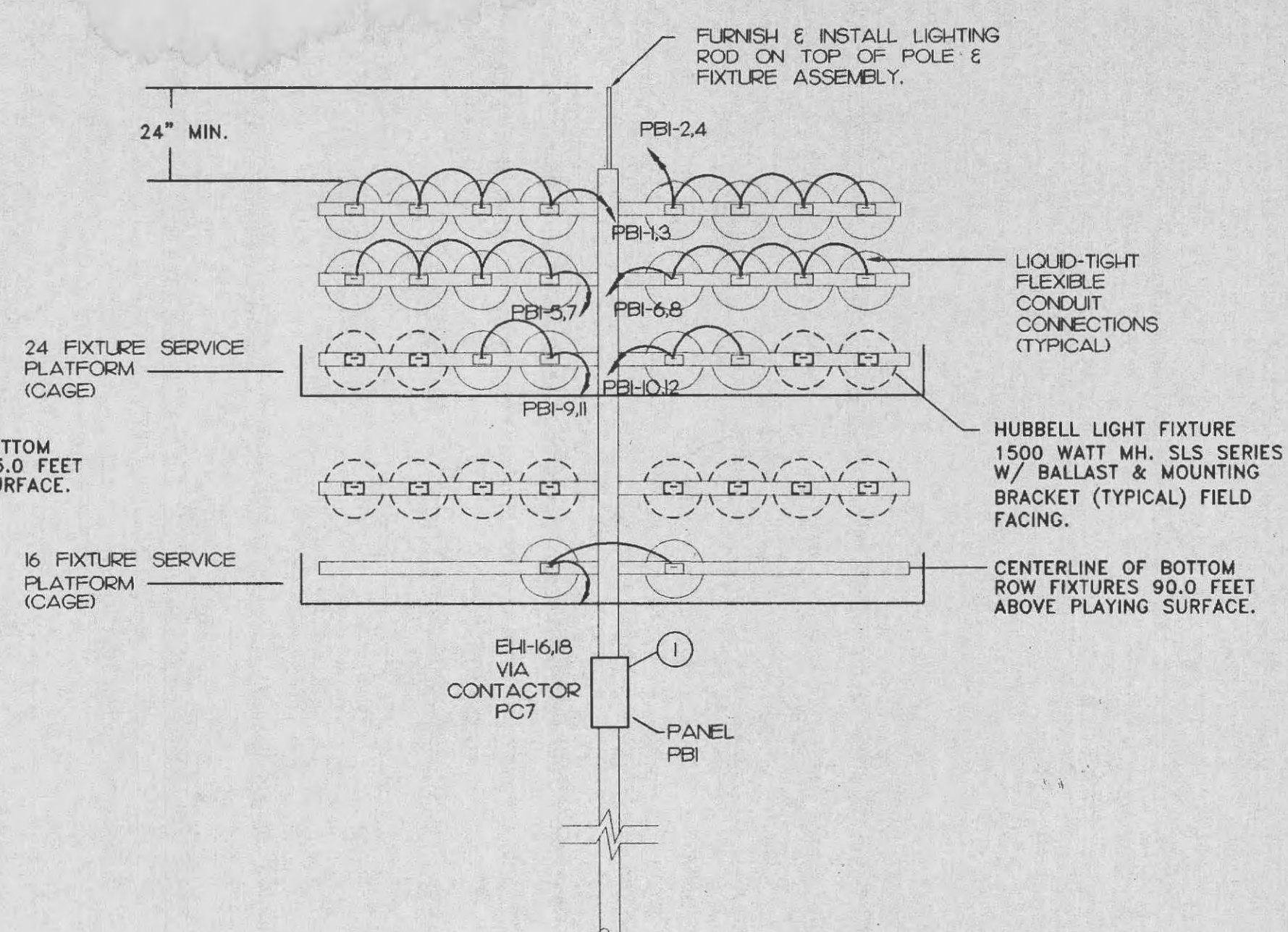


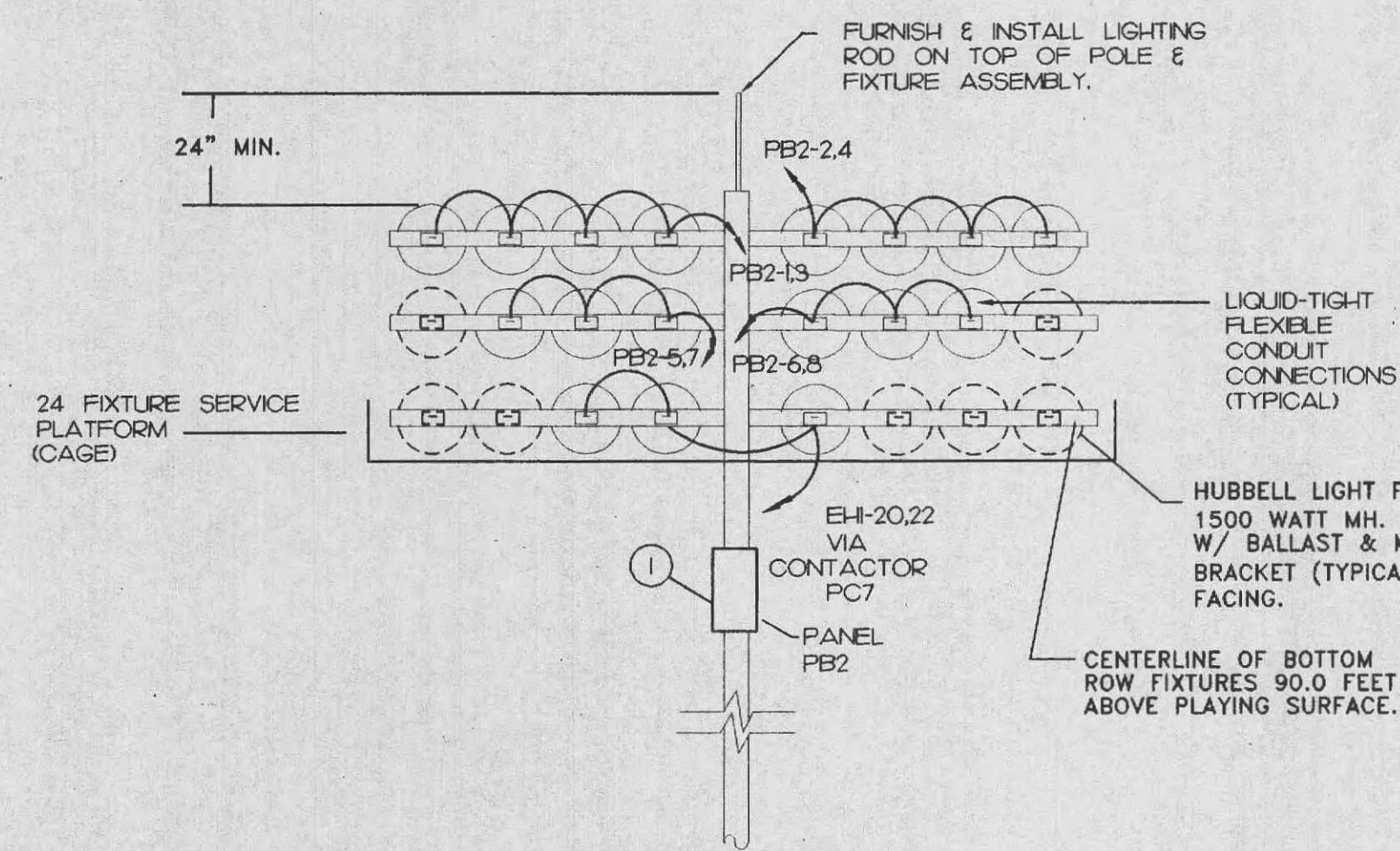
"A1" POLE (BACK)
NOT TO SCALE



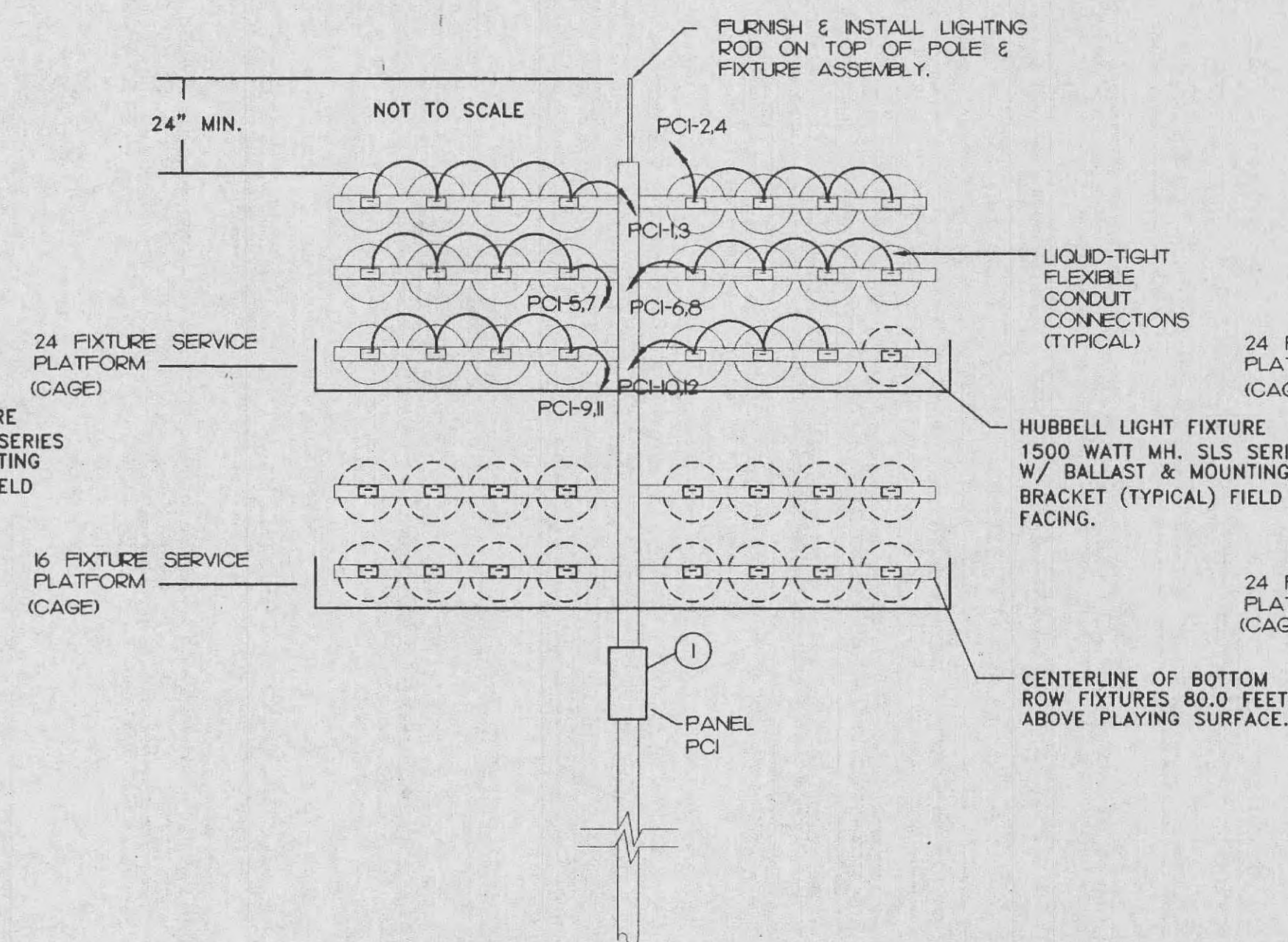
"A2" POLE (BACK)
NOT TO SCALE



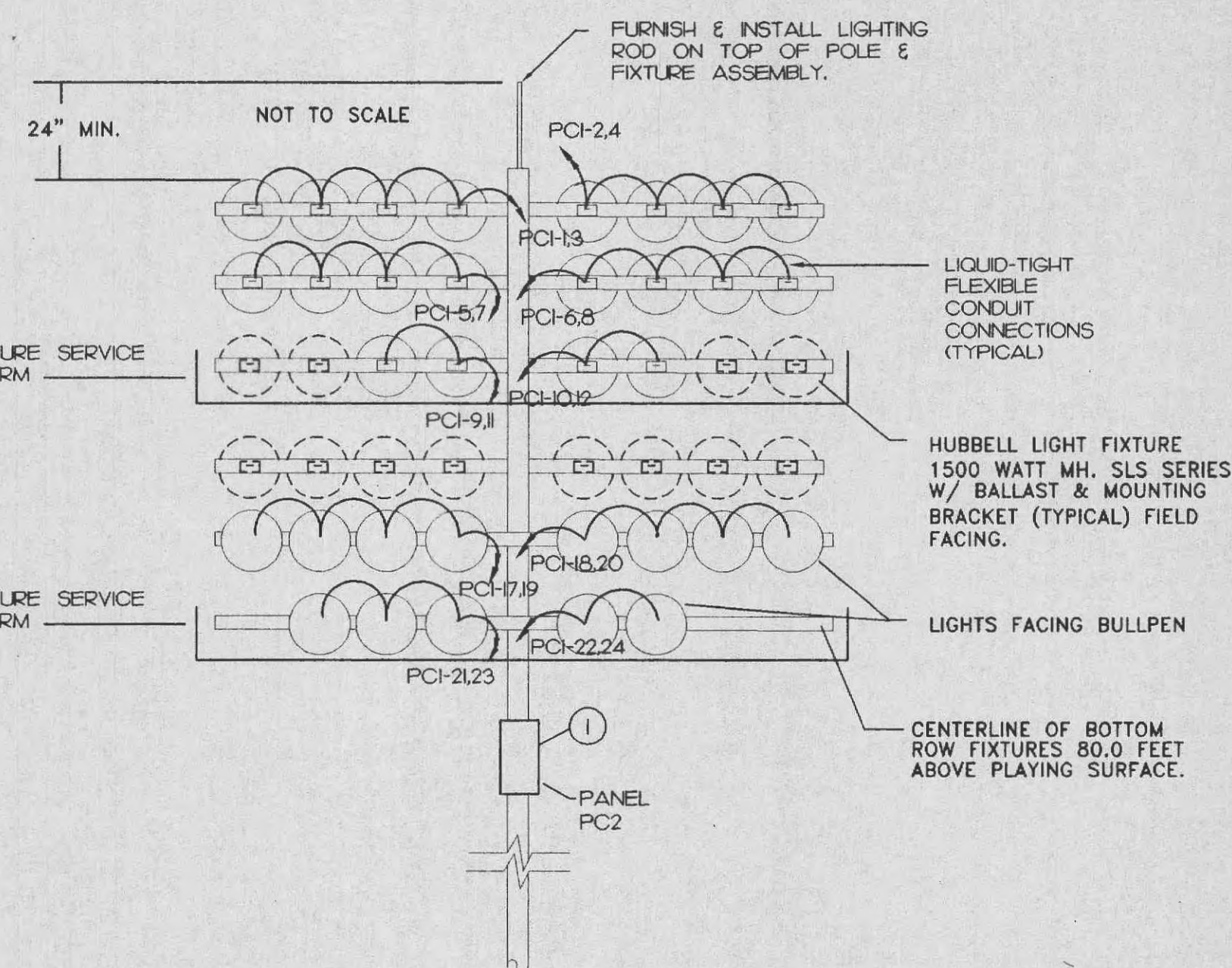
"B1" POLE (BACK)



"B2" POLE (BACK)
NOT TO SCALE



"C1" POLE (BACK)
NOT TO SCALE



"C2" POLE (BACK)
NOT TO SCALE

GENERAL NOTES:

1. NON-EMERGENCY FIXTURES ARE HUBBELL "SLS" SERIES USING 1500 WATT METAL HALIDE LAMPS AT 480 VOLTS.
2. ALL EMERGENCY FIXTURES SHALL BE HUBBELL "HOT RESTRIKE SPORTS LITER" SERIES, USING A 1500 WATT METAL HALIDE LAMP AT 480 VOLTS. THE EMERGENCY FIXTURE SHALL ALSO BE USED TO MAINTAIN NON-EMERGENCY LIGHTING LEVELS.
3. CLIMBING RUNGS AND SAFETY CABLE SHALL NOT BE OBSCURED OR BLOCKED BY ANY TYPE OF EQUIPMENT WHICH WOULD PREVENT A PERSON OR PERSONS FROM BLIMBERG A LIGHT POLE UNOBSTRUCTED.
4. NO CONDUIT SHALL BE ROUTED THRU PLAYING FIELD.
5. FIELD VERIFY EXACT FIXTURE LOCATIONS ON LIGHT STRUCTURE SYSTEM & SYSTEM LAYOUT WITH MANUFACTURER.
6. SEE ELECTRICAL RISER FOR ADDITIONAL FEEDER INFORMATION.
7. SEE CONTACTOR SCHEDULE FOR ADDITIONAL INFORMATION.
8. DASHED FIXTURES INDICATE ALTERNATE FIXTURES. REFER TO ALTERNATE FIELD LIGHTING SHEET IF ALTERNATE IS SELECTED.
9. CONDUCTORS SHALL BE SIZED IN ACCORDANCE WITH NEC TO ALLOW FOR VOLTAGE DROP.

ELECTRICAL NOTES:

1. PANELBOARD, ACTUAL LOCATION SHALL BE MOUNTED TO BACK OF SERVICE PLATFORM. ELECTRICAL CONTRACTOR SHALL MAINTAIN REQUIRED PANELBOARD CLEARANCE IN ACCORDANCE WITH NEC. SEE ELECTRICAL RISER FOR ADDITIONAL INFORMATION.

PANELBOARD "PC1" LOCATION: POLE C1											
AMPS: 100MAINS: 100A. MB 277/480V. 3PH. 4W. .GR. MOUNTING: SURFACE											
BREAKER	LOAD	WATTS	CKT NO	PHASE LOADS			CKT NO	WATTS	LOAD	BREAKER	P A
				A	B	C					
20	2 FIELD LTG	3300	1	6600			2	3300	FIELD LTG	2	20
--	--	3300	3		6600		4	3300		--	--
20	2 FIELD LTG	3300	5			6600	6	3300	FIELD LTG	2	20
--	--	3300	7	6600			8	3300		--	--
20	2 FIELD LTG	3300	9		5775		10	2475	FIELD LTG	2	20
--	--	3300	11			5775	12	2475		--	--
20	2 SPARE		13	0			14		SPARE	2	20
--	--		15		0		16			--	--
20	2 SPARE		17			0	18		SPARE	2	20
--	--		19				20			--	--
20	2 SPARE		21	0			22		SPARE	2	20
--	--		23				24			--	--
--	SPACE		25	0			26		SPACE	--	--
--	SPACE		27		0		28		SPACE	--	--
--	SPACE		29			0	30		SPACE	--	--
TOTAL LOAD		37.95 KW		13200	12375	12375					
		45.72 AMPS					I.C. 14000 RMS SYM. AMPS				

PANELBOARD "PC2" LOCATION: POLE C2											
AMPS: 125MAINS: 125A. MB 277/480V. 3PH. 4W. .GR. MOUNTING: SURFACE											
BREAKER	LOAD	WATTS	CKT NO	PHASE LOADS			CKT NO	WATTS	LOAD	BREAKER	P A
				A	B	C					
20	2 FIELD LTG	3300	1	6600			2	3300	FIELD LTG	2	20
--	--	3300	3		6600		4	3300		--	--
20	2 FIELD LTG	3300	5			6600	6	3300	FIELD LTG	2	20
--	--	3300	7	6600			8	3300		--	--
20	2 FIELD LTG	1650	9		3300		10	1650	FIELD LTG	2	20
--	--	1650	11			3300	12	1650		--	--
20	2 SPARE		13	0			14		SPARE	2	20
--	--		15				16			--	--
20	2 FIELD LTG	3300	17			6600	18	3300	FIELD LTG	2	20
--	--	3300	19			6600	20	3300		--	--
20	2 FIELD LTG	2475	21		4125		22	1650	FIELD LTG	2	20
--	--	2475	23			4125	24	1650		--	--
20	2 SPARE		25	0			26		SPARE	2	20
--	--		27			0	28			--	--
--	SPACE		29			0	30		SPACE	--	--
TOTAL LOAD		54.45 KW		19800	14025	20625					
		65.60 AMPS					I.C. 14000RMS SYM. AMPS				

Disclaimer of Responsibility

I hereby specify that the documents intended to be authenticated by my seal are limited to drawings and specifications containing my seal with signature and date, and I hereby disclaim any responsibility for all other plans, specifications, estimates, reports or other documents or instruments relating to or intended to be used for any part or parts of the architectural or engineering project or survey.

h+k

SPORT

HELLMUTH OBATA & KASSABAUM, INC.
Architecture, Engineering, Planning,
Interiors, Facility Programming
323 West 8th Street, Suite 700
Kansas City, Missouri 64105

STRUCTURAL ENGINEER
Ker Conrad Orlin Associate
811 Walker - Suite 301
Kansas City, Missouri 64106
MECHANICAL/ELECTRICAL PLUMBING
Brodus & Associates
980 6th Street - Suite 214
Raytown, Missouri 64133
CIVIL ENGINEER
George Butler Associates, Inc.
225 South Main Street - Suite 200
O'Fallon, Missouri 63366-3392

T. R. HUGHES BALLPARK
AT THE OZZIE SMITH SPORTS COMPLEX



for the River City Rascals
OF FALLON, MO.

PACKAGE REVISIONS		
NO.	DATE	DESCRIPTION

PROJECT NO. 97-0761-00	ISSUED BY: HOK SPORT
DRAWN BY: JLD	REVIEWED BY: AJO
ISSUED: 7-7-98	
SHEET TITLE	

FIELD LIGHTING
70/50 FC LEVEL

CATEGORY - SUB-CATEGORY - SHEET

E.1-4