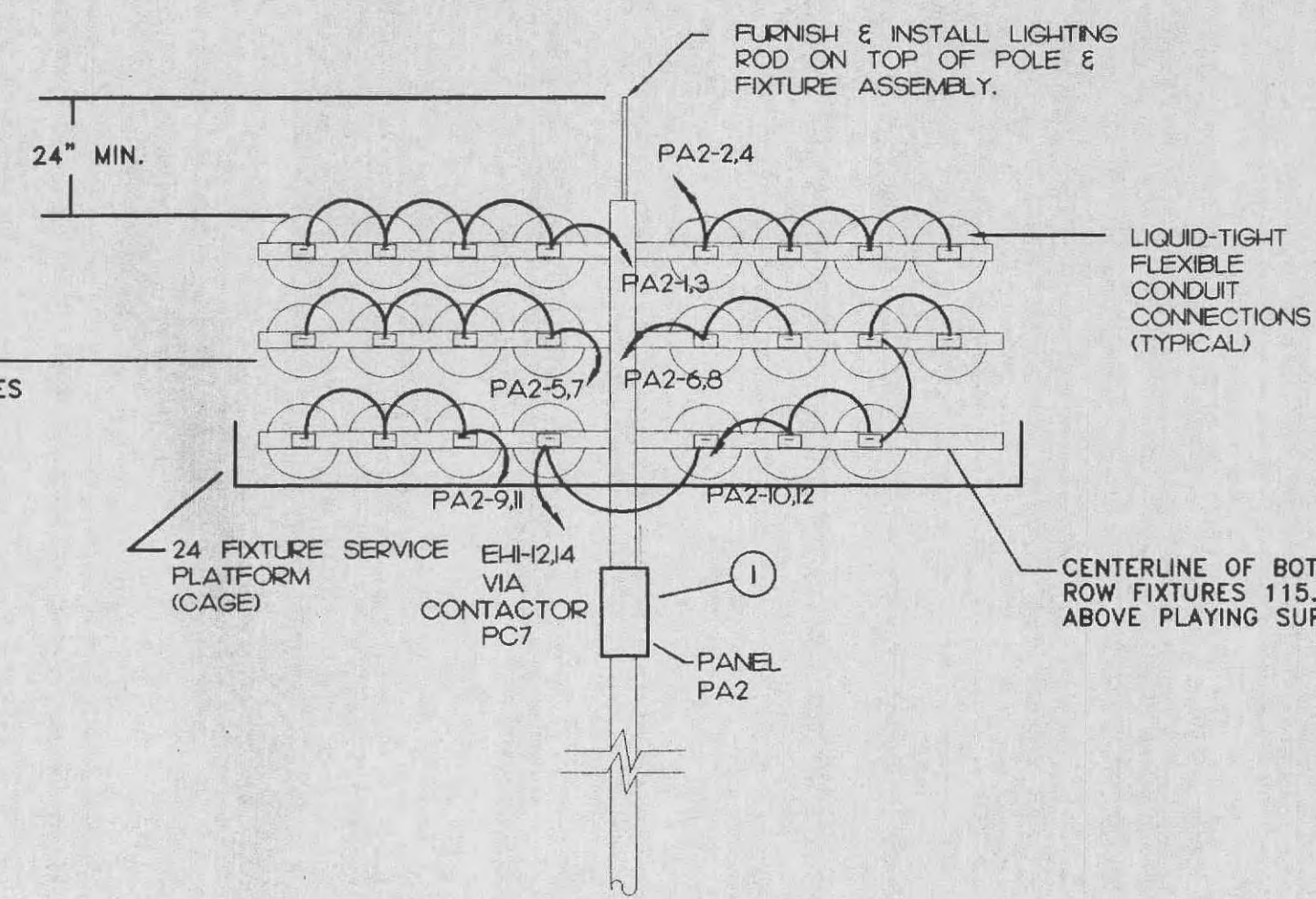
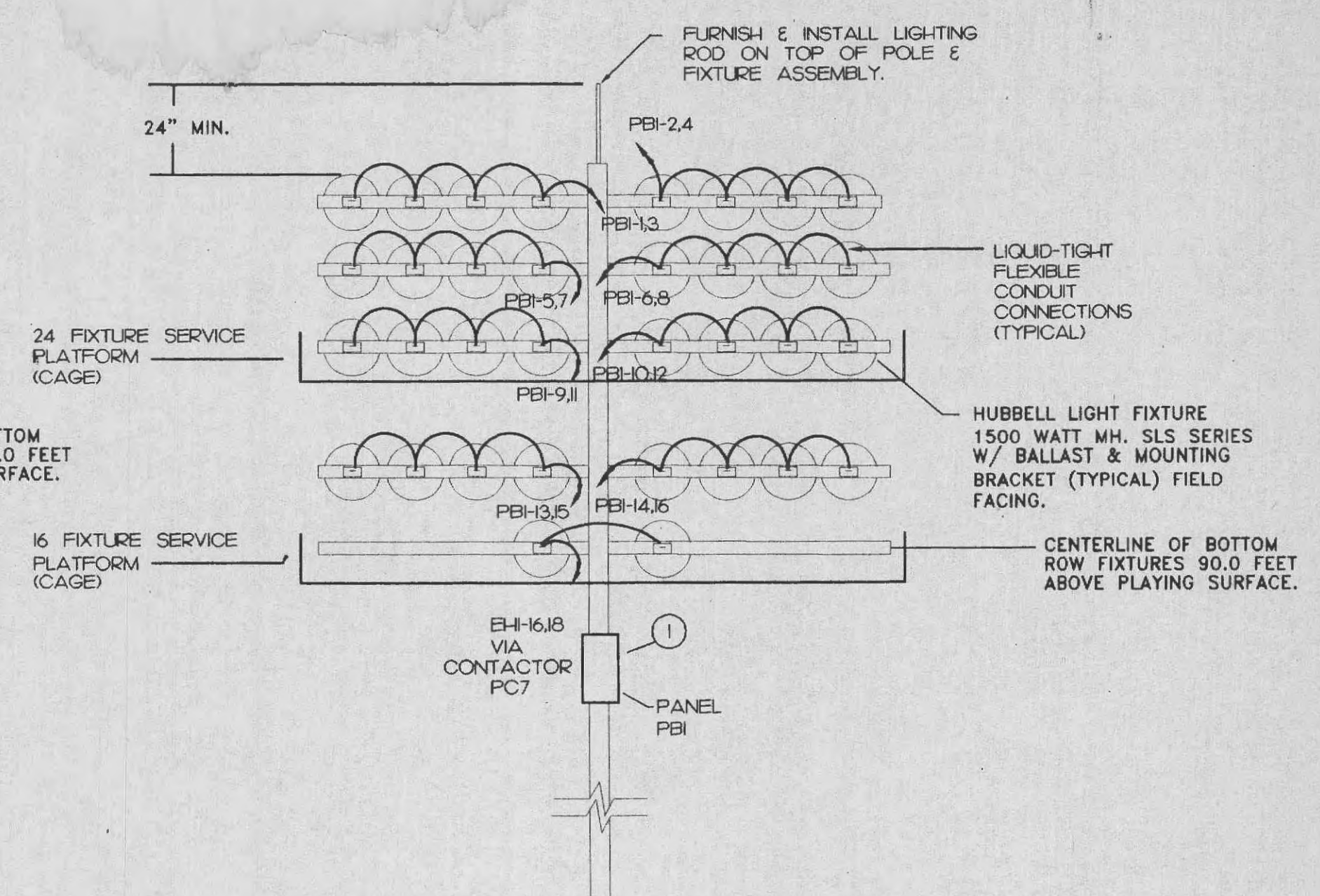


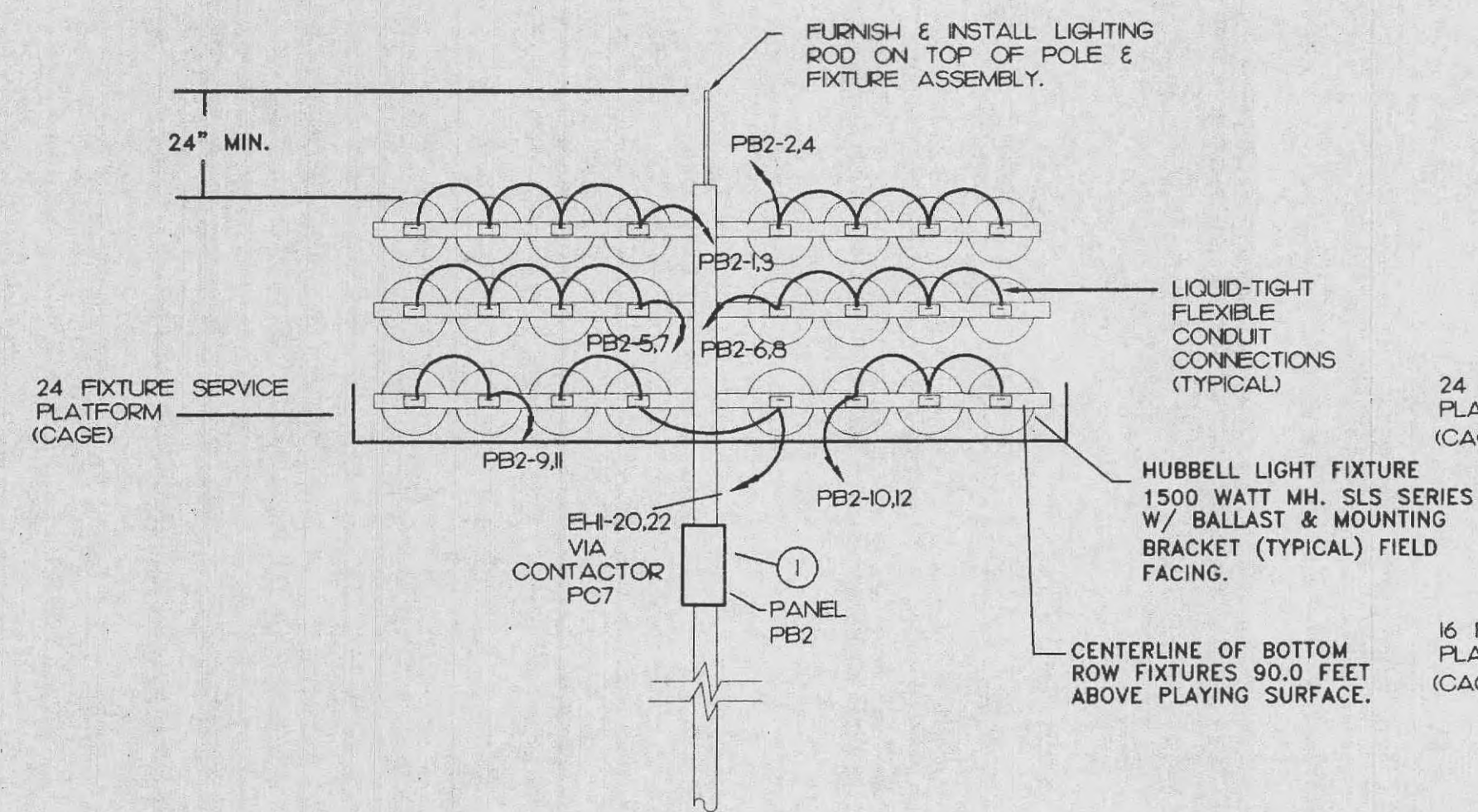
"A1" POLE (BACK)  
NOT TO SCALE



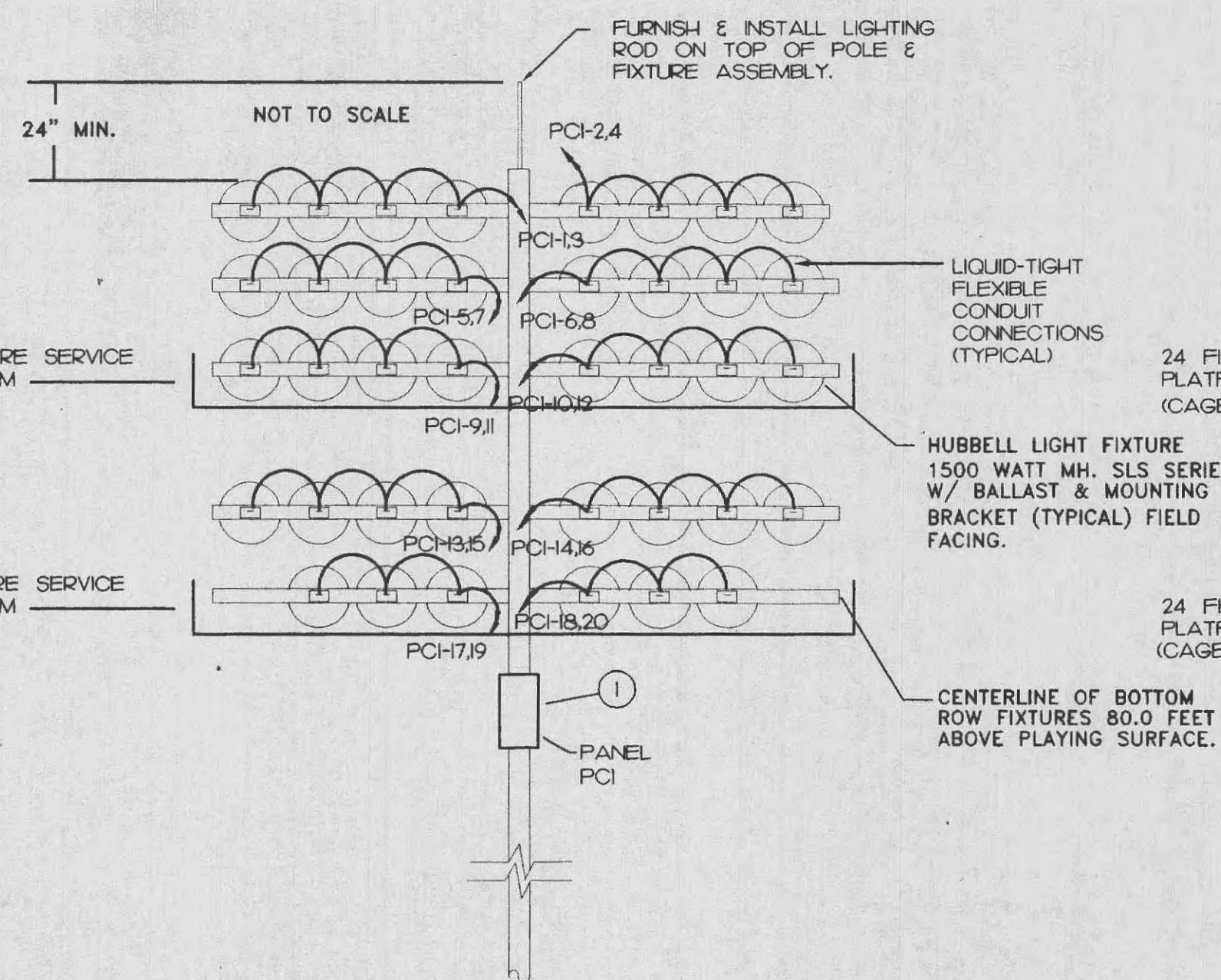
"A2" POLE (BACK)  
NOT TO SCALE



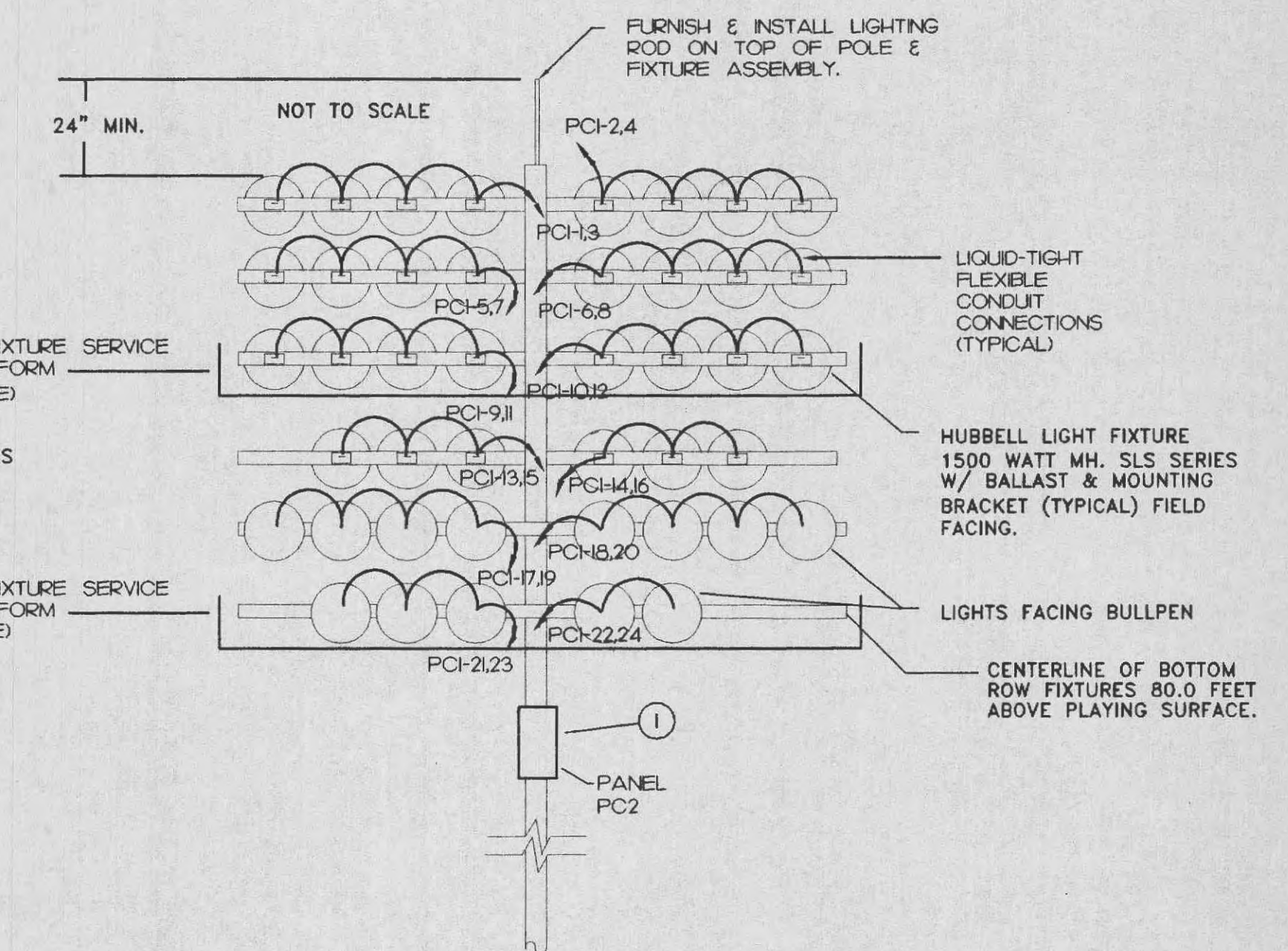
"B1" POLE (BACK)



"B2" POLE (BACK)  
NOT TO SCALE



"C1" POLE (BACK)  
NOT TO SCALE



"C2" POLE (BACK)  
NOT TO SCALE

GENERAL NOTES:

- NON-EMERGENCY FIXTURES ARE HUBBELL "SLS" SERIES USING 1500 WATT METAL HALIDE LAMPS AT 480 VOLTS.
- ALL EMERGENCY FIXTURES SHALL BE HUBBELL "HOT RESTRIKE SPORTS LITER" SERIES, USING A 1500 WATT METAL HALIDE LAMP AT 480 VOLTS. THE EMERGENCY FIXTURE SHALL ALSO BE USED TO MAINTAIN NON-EMERGENCY LIGHTING LEVELS.
- CLIMBING RINGS AND SAFETY CABLE SHALL NOT BE OBSOURED OR BLOCKED BY ANY TYPE OF EQUIPMENT WHICH WOULD PREVENT A PERSON OR PERSONS FROM CLIMBING A LIGHT POLE UNOBSTRUCTED.
- NO CONDUIT SHALL BE ROUTED THRU PLAYING FIELD.
- FIELD VERIFY EXACT FIXTURE LOCATIONS ON LIGHT STRUCTURE SYSTEM & SYSTEM LAYOUT WITH MANUFACTURER.
- SEE ELECTRICAL RISER FOR ADDITIONAL FEEDER INFORMATION.
- SEE CONTACTOR SCHEDULE FOR ADDITIONAL INFORMATION.
- CONDUCTORS SHALL BE SIZED IN ACCORDANCE WITH NEC TO ALLOW FOR VOLTAGE DROP.

ELECTRICAL NOTES:

- PANELBOARD, ACTUAL LOCATION SHALL BE MOUNTED TO BACK OF SERVICE PLATFORM. ELECTRICAL CONTRACTOR SHALL MAINTAIN REQUIRED PANELBOARD CLEARANCE IN ACCORDANCE WITH NEC. SEE ELECTRICAL RISER FOR ADDITIONAL INFORMATION.

PANELBOARD PC1" LOCATION: POLE C1

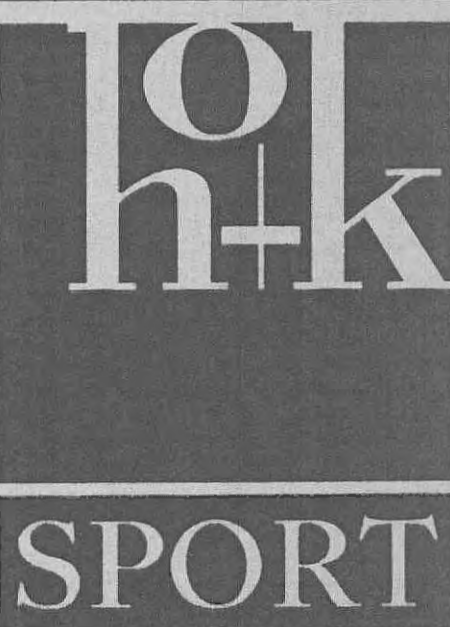
AMPS:		100MAINS: 100A. MB			277/480V, 3PH, 4W, .GR.			MOUNTING: SURFACE	
BREAKER	LOAD	WATTS	PHASE LOADS			WATTS	LOAD	BREAKER	
A	P		A	B	C		P	A	
20	2	3300	1	6600		2	3300	FIELD LTG	2 20
--	--	3300	3	6600		4	3300		-- --
20	2	3300	5	6600	6600	6	3300	FIELD LTG	2 20
--	--	3300	7			8	3300		-- --
20	2	3300	9	5775	5775	12	2475	FIELD LTG	2 20
--	--	3300	11			14	3300		-- --
20	2	3300	15	3300		16	3300	FIELD LTG	2 20
--	--	3300	13			16	3300		-- --
20	2	2475	17	4950	4950	18	2475	FIELD LTG	2 20
--	--	2475	19			20	2475		-- --
20	2	3300	21	3300		24		SPARE	2 20
--	--	3300	23			26			-- --
--	--		25	0		26		SPACE	-- --
--	--		27	0		28		SPACE	-- --
--	--		29		0	30		SPACE	-- --
TOTAL LOAD		61.05 KV	21450	18975	20625			1. C. 14000 RMS SYM. AMPS	

PANELBOARD PC2" LOCATION: POLE C2

AMPS:		MAINS: 125A. MB			277/480V, 3PH, 4W, .GR.			MOUNTING: SURFACE	
BREAKER	LOAD	WATTS	PHASE LOADS			WATTS	LOAD	BREAKER	
A	P		A	B	C		P	A	
20	2	3300	1	6600		2	3300	FIELD LTG	2 20
--	--	3300	3	6600		4	3300		-- --
20	2	3300	5	6600	6600	6	3300	FIELD LTG	2 20
--	--	3300	7			8	3300		-- --
20	2	3300	9	6600	6600	10	3300	FIELD LTG	2 20
--	--	3300	11			12	3300		-- --
20	2	2475	13	4950	4950	14	2475	FIELD LTG	2 20
--	--	2475	15			16	2475		-- --
20	2	3300	17	6600	6600	18	3300	FIELD LTG	2 20
--	--	3300	19			20	3300		-- --
20	2	2475	21	4125	4125	22	1650	FIELD LTG	2 20
--	--	2475	23			24	1650		-- --
20	2		25	0		26		SPARE	2 20
--	--		27	0		28			-- --
--	--		29		0	30		SPACE	-- --
TOTAL LOAD		70.95 KV	24750	22275	23925			1. C. 14000RMS SYM. AMPS	

Disclaimer of Responsibility

I hereby specify that the documents intended to be authenticated by my seal are limited to drawings and specifications containing my seal with signature and date, and I hereby disclaim any responsibility for all other plans, specifications, estimates, reports or other documents or instruments relating to or intended to be used for any part or parts of the architectural or engineering project or survey.



HELLMUTH OBATA & KASSABAUM, INC.  
Architecture, Engineering, Planning,  
Interiors, Facility Programming  
323 West 8th Street, Suite 700  
Kansas City, Missouri 64105

STRUCTURAL ENGINEER  
East Central Union Associates  
801 Walnut - Suite 301  
Kansas City, Missouri 64106

MECHANICAL/ELECTRICAL/PLUMBING

Brookman & Associates  
9903 Shawnee - Suite 214  
Raytown, Missouri 64133

CIVIL ENGINEER  
George Butler Associates, Inc.  
225 South Main Street - Suite 200  
O'Fallon, Missouri 63366-3892

T. R. HUGHES BALLPARK  
AT THE OZZIE SMITH SPORTS COMPLEX



for the River City Rascals  
O'FALLON, MO

PACKAGE REVISIONS

NO.	DATE	DESCRIPTION

PROJECT NO. 97-0761-00  
ISSUED BY: HOK SPORT  
DRAWN BY: JLD  
REVIEWED BY: AJO  
ISSUED: 7-7-98  
SHEET TITLE

FIELD LIGHTING  
ALTERNATE 100/75 FC

CATEGORY - SUB-CATEGORY - SHEET

E.1-6