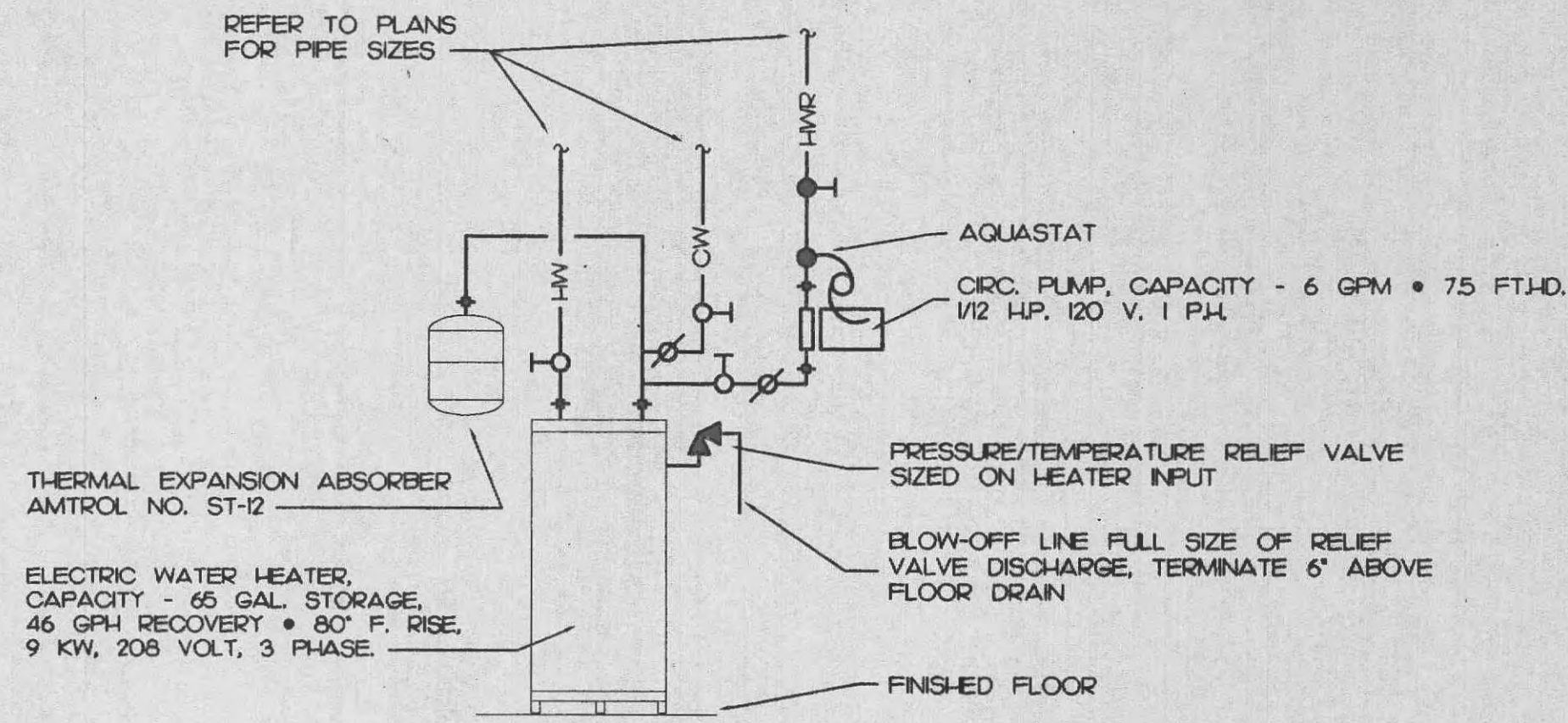


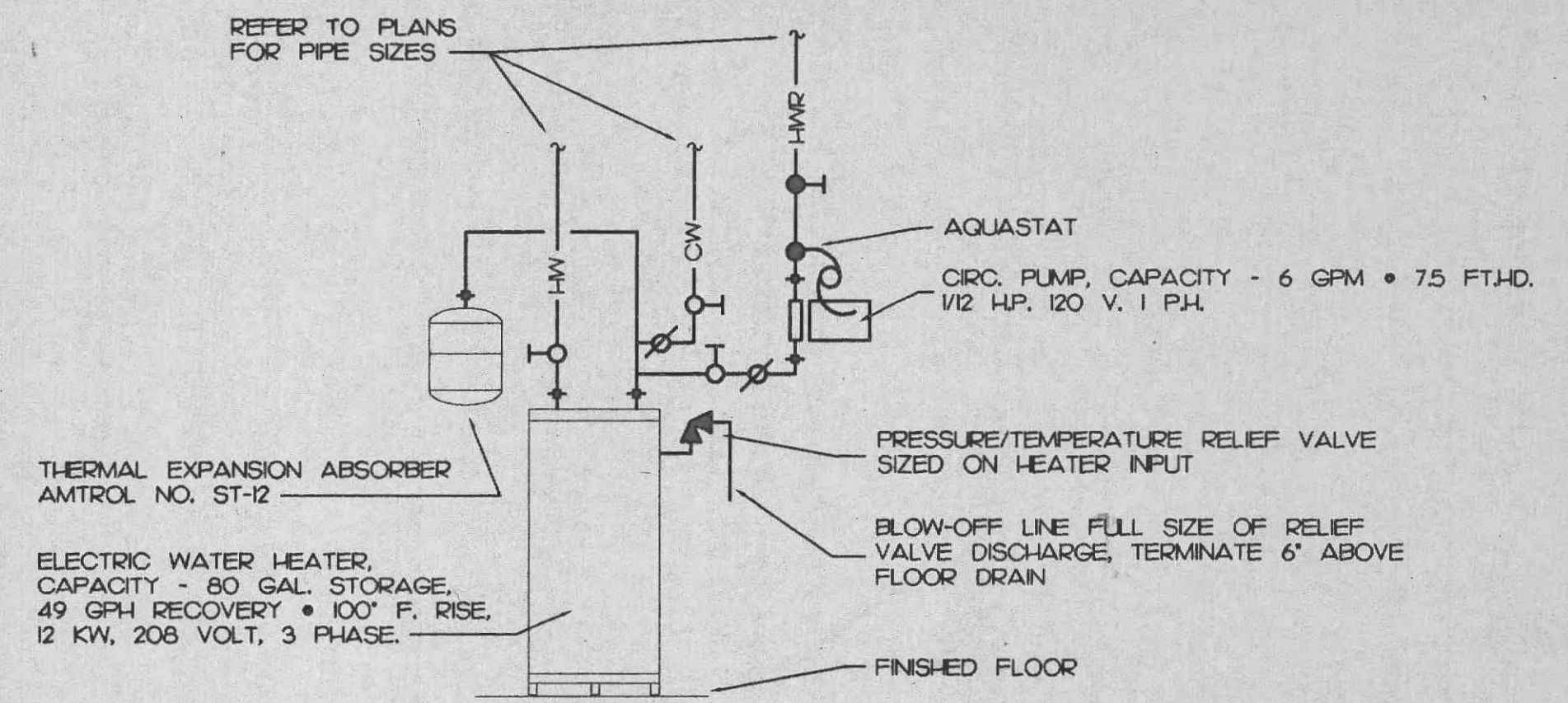
PLUMBING EQUIPMENT SCHEDULE						
ITEM NO.	DESCRIPTION	PIPE SIZE CONNECTIONS				REMARKS
		CW	H-W	W	V	
(A1)	WASH FOUNTAIN	3/4"	3/4"	2"	1 1/2"	
(A2)	HAND SINK	1/2"	1/2"	1 1/2"	1 1/4"	
(B)	WATER CLOSET	1"	-	4"	2"	
(B2)	WATER CLOSET DISABLED	1"	-	4"	2"	
(C)	URINAL	3/4"	-	2"	1 1/2"	
(C2)	URINAL DISABLED	3/4"	-	2"	1 1/2"	
(D)	JANITOR BASIN	1/2"	1/2"	3"	1 1/2"	
(F)	DRINKING FOUNTAIN	1/2"	-	1 1/4"	1 1/4"	

PLUMBING SYMBOLS:

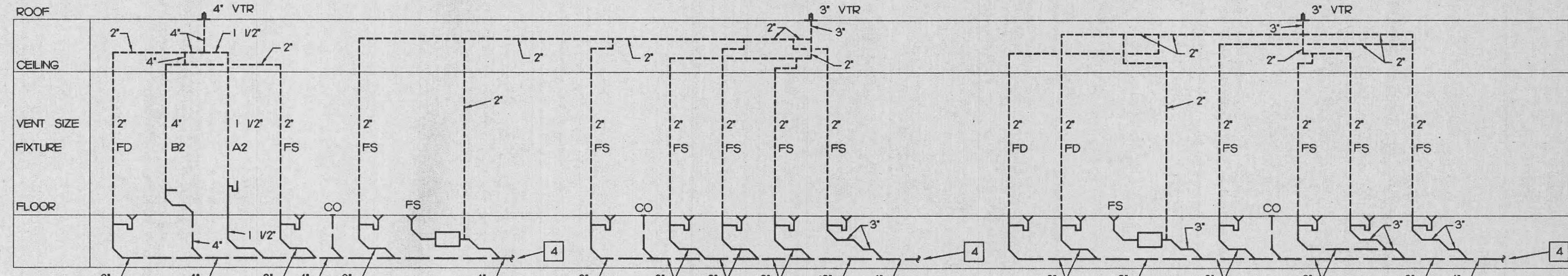
- COLD WATER
- HOT WATER
- HOT WATER RETURN
- SW --- STORM WATER ABOVE GRADE
- SANITARY WASTE ABOVE GRADE
- SW --- STORM WATER BELOW GRADE
- SANITARY WASTE BELOW GRADE
- SANITARY VENT
- +--- GATE VALVE
- +--- CHECK VALVE
- +--- UNION
- CO --- CLEANOUT IN-LINE, OR FLOOR TYPE
- HB, WHL --- HOSE BIBB, WALL HYDRANT
- FD □ AD FLOOR DRAIN, AREA DRAIN
- RD □ OFD ROOF DRAIN, OVERFLOW DRAIN
- RFD □ FS RECESSED FLOOR DRAIN, FLOOR SINK
- WD WASHER DRAIN
- AFF. ABOVE FINISHED FLOOR
- VTR VENT THRU ROOF



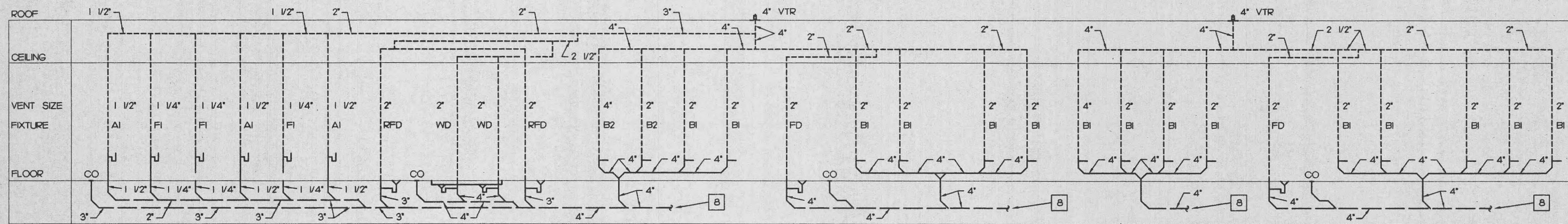
WATER HEATER "A" DETAIL
NOT TO SCALE



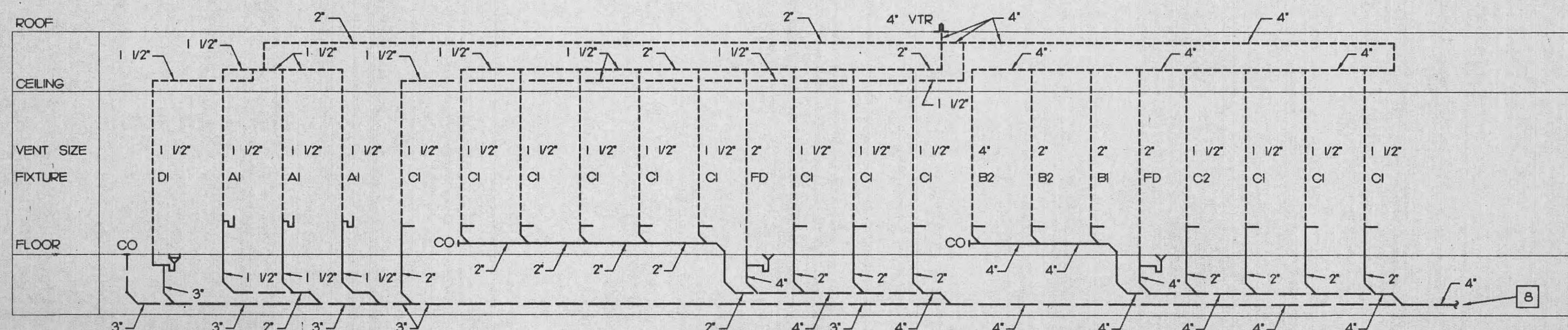
WATER HEATER "B" DETAIL
NOT TO SCALE



CONCESSION/COMMISSARY VENTING DIAGRAM



WOMEN'S RESTROOM VENTING DIAGRAM



MEN'S RESTROOM VENTING DIAGRAM

Disclaimer of Responsibility

I hereby specify that the documents intended to be authenticated by my seal are limited to drawings and specifications containing my seal with signature and date, and I hereby disclaim any responsibility for all other plans, specifications, estimates, reports or other documents or instruments relating to or intended to be used for any part or parts of the architectural or engineering project or survey.

HOK
h+k

SPORT

HELLMUTH OBATA & KASSABAUM, INC.
Architecture, Engineering, Planning,
Interiors, Facility Programming
323 West 8th Street, Suite 700
Kansas City, Missouri 64105

STRUCTURAL ENGINEER
Kerr-Corral Graham Associates
807 Walnut - Suite 301
Kansas City, Missouri 64106

MECHANICAL/ELECTRICAL PLUMBING

Brook & Associates
9505 43rd Street - Suite 214
Raytown, Missouri 64133

CIVIL ENGINEER
George Butler Associates, Inc.
225 South Main Street - Suite 200
O'Fallon, Missouri 63366-2893

T. R. HUGHES BALLPARK
AT THE OZZIE SMITH SPORTS COMPLEX



for the River City Rascals
OFALLON, MO.

PACKAGE REVISIONS		
NO.	DATE	DESCRIPTION

PROJECT NO. 97-0761-00	ISSUED BY: HOK SPORT
DRAWN BY: EBRD	REVIEWED BY: GDK
ISSUED: 7-7-98	
SHEET TITLE	

PLUMBING VENTING
DIAGRAM
SYMBOLS AND DETAILS

CATEGORY - SUB-CATEGORY - SHEET

P.1