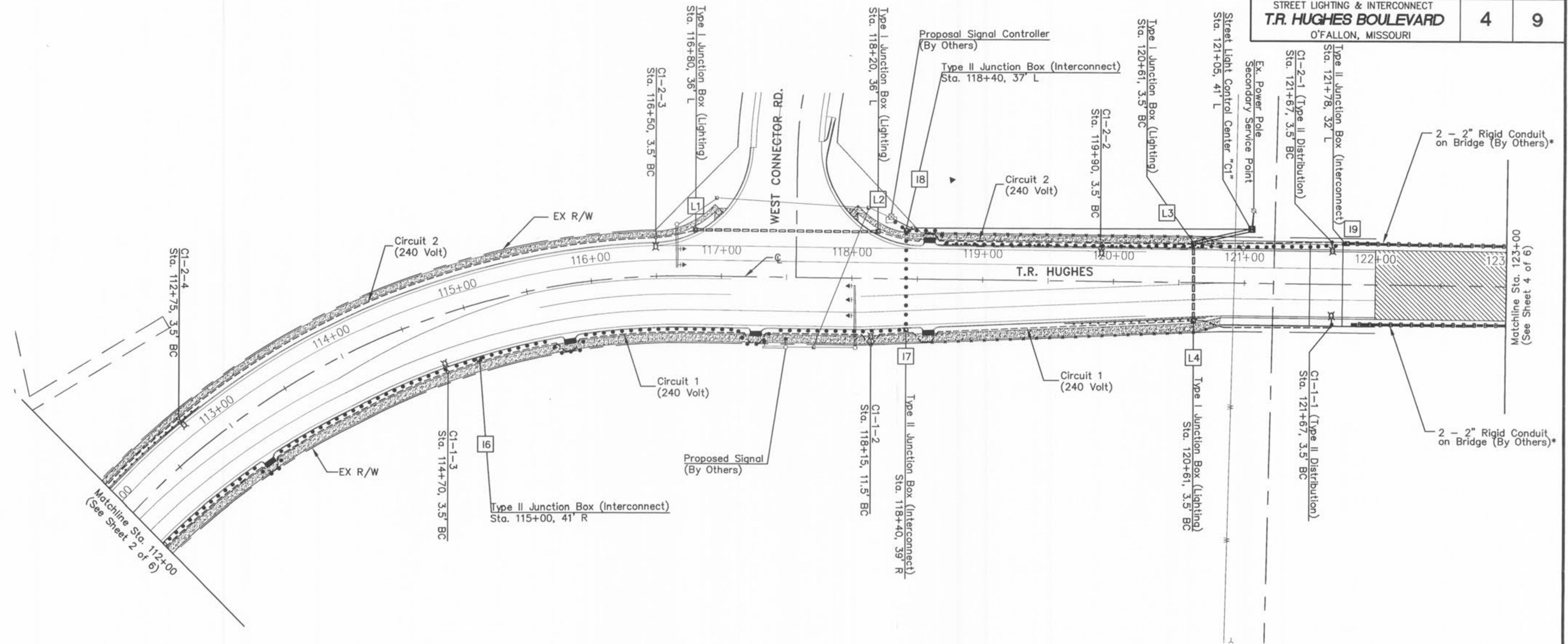


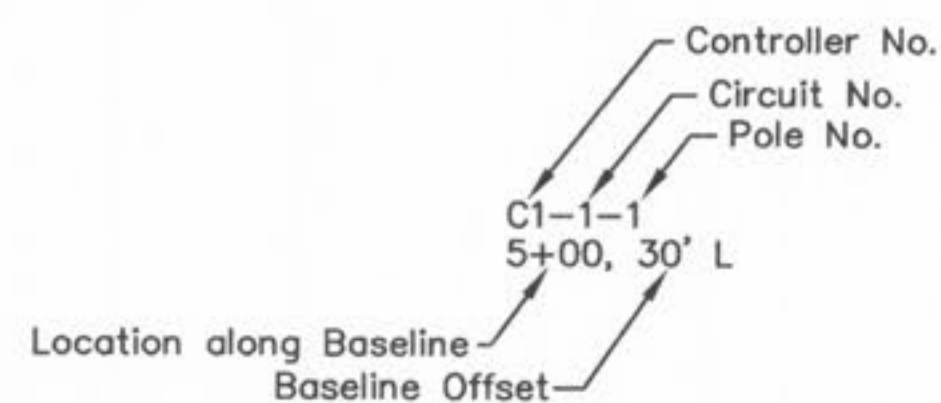
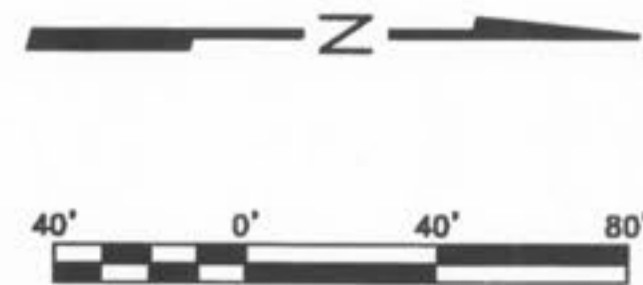
STREET LIGHTING & INTERCONNECT
T.R. HUGHES BOULEVARD
 O'FALLON, MISSOURI



LEGEND

- ⊗ 250W HPS Luminaire
- Junction Box
- ⊠ Street Light Control Center
- ∅ Secondary Service Point
- 2" Trenched PVC Conduit
- - - Direct Bury Street Light Cable (3-1c#6 AWG, Type USE)
- ▬▬▬ 3" Pushed PVC Conduit
- ▬▬▬ 2" Bridge PVC Conduit (By Others)
- 2" PVC Conduit w/24 Mode Fiber Optic Cable (18 Single/6 Multi)

* Location of proposed bridge is based on plans produced by Shafer, Kline, and Warren, Inc. dated 5/6/2003. Two, 2" PVC conduits to be placed in barrier wall during bridge construction, by others.



WIRING DETAILS

