

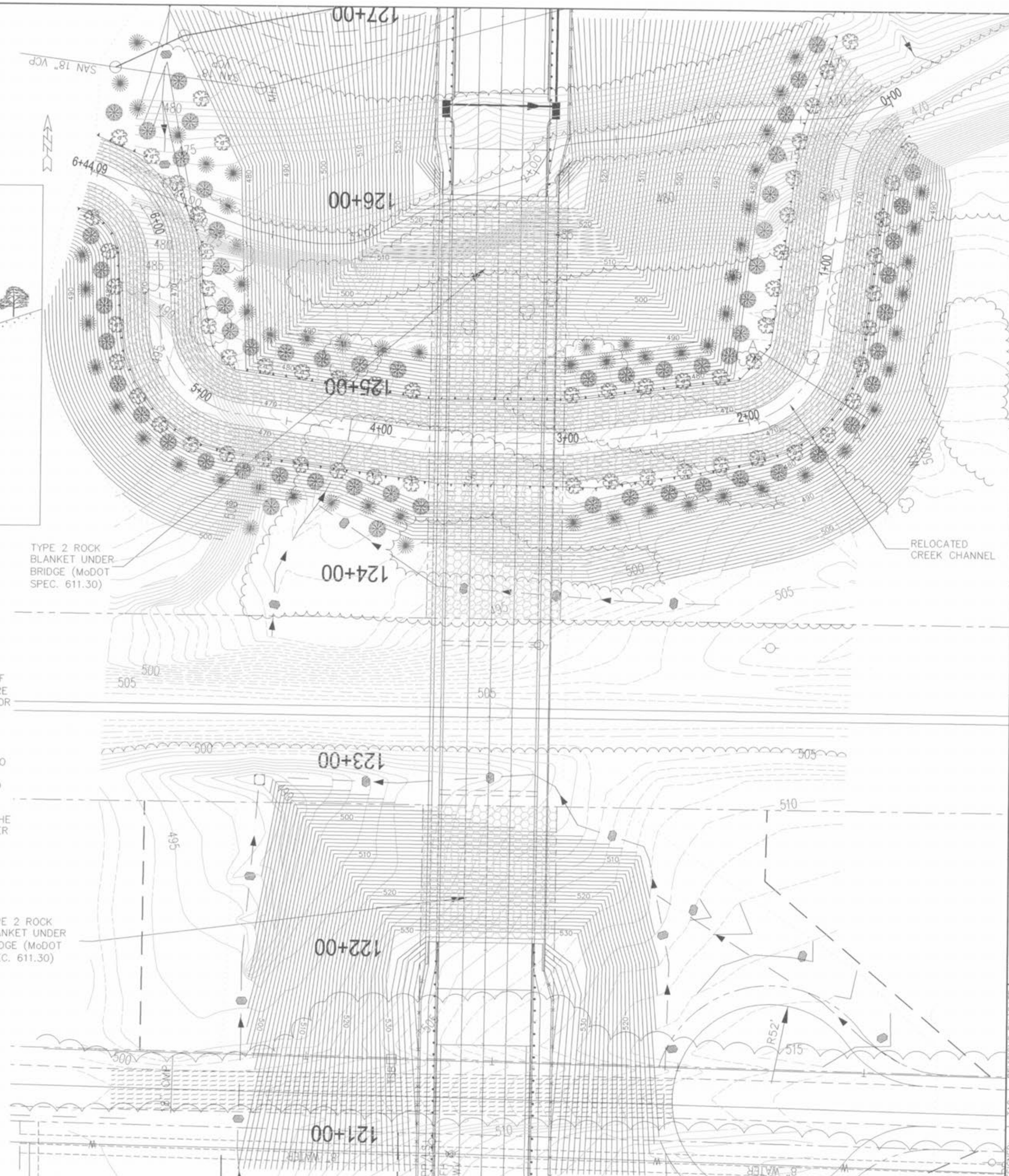
**EROSION CONTROL GENERAL NOTES**

1. ALL TEMPORARY EROSION CONTROL ITEMS SHALL CONFORM TO THE MISSOURI DEPARTMENT OF TRANSPORTATION STANDARD DRAWINGS M806.10.
2. THE CONTRACTOR SHALL EXERCISE BEST MANAGEMENT PRACTICES THROUGHOUT THE LIFE OF THE PROJECT TO CONTROL WATER POLLUTION. CONSTRUCTION OF PERMANENT DRAINAGE FACILITIES AS WELL AS PERFORMANCE OF OTHER CONTRACT WORK WHICH MAY CONTRIBUTE TO THE CONTROL OF SILTATION SHALL BE ACCOMPLISHED AT THE EARLIEST PRACTICABLE TIME.
3. THE EROSION CONTROL MEASURES SHOWN ON THESE PLANS ARE NOT ALWAYS APPLICABLE FOR A GIVEN STAGE OF CONSTRUCTION. IT IS THE CONTRACTOR'S RESPONSIBILITY TO INSURE THAT PROPER EROSION CONTROL MEASURES ARE IN PLACE DURING EACH CONSTRUCTION STAGE OF THIS PROJECT. THE ENGINEER MAY REQUIRE THAT THE CONTRACTOR CONSTRUCT ADDITIONAL EROSION CONTROL ITEMS (SILT FENCE, DITCH CHECKS AND ALIKE) IN ORDER TO PROPERLY CONTROL EROSION. THE CONTRACTOR WILL COMPLY WITH THE ENGINEER'S REQUIREMENTS; PAYMENT FOR THESE ADDITIONAL EROSION CONTROL ITEMS WILL BE MADE AT THE CONTRACT UNIT PRICE FOR EACH ITEM.
4. THE CONTRACTOR WILL MONITOR AND MAINTAIN ALL EROSION CONTROL MEASURES AT CONTRACTOR'S EXPENSE. NO GRADED AREAS ARE ALLOWED TO REMAIN BARE WITHOUT BEING SEEDED AND MULCHED, EITHER TEMPORARILY OR PERMANENTLY. IT IS THE CONTRACTOR'S RESPONSIBILITY TO PREVENT SOIL FROM DAMAGING ADJACENT PROPERTY TO THE SITE AND TO PREVENT THE DEPOSITION OF SILT IN EXISTING AND PROPOSED DOWNSTREAM DRAINAGE SYSTEMS.
5. THE EROSION CONTROL SHOWN HEREIN IS INTENDED TO PREVENT SOIL FROM DAMAGING ADJACENT PROPERTY TO THE SITE AND TO PREVENT THE DEPOSITION OF SILT IN EXISTING AND PROPOSED DOWNSTREAM DRAINAGE SYSTEMS. OTHER EROSION CONTROL MEASURES, NOT SHOWN HEREIN, WILL BE REQUIRED TO PREVENT DEPOSITION OF SILT ONTO THE TRAVELED WAY DURING THE VARIOUS PHASES OF THE PROJECT'S CONSTRUCTION. IT IS THE CONTRACTOR'S RESPONSIBILITY TO FURNISH, INSTALL, MONITOR AND MAINTAIN THIS EROSION CONTROL UNTIL THE PROJECT IS COMPLETED.

TREE SCHEDULE	
	PIN OAKS (60 TOTAL)
	MAPLES (60 TOTAL)
	WILLOWS (60 TOTAL)

LEGEND	
	SILT FENCE
	DITCH CHECK
	SILT FENCE
	PROP. DRAINAGE SWALE

**GRADING QUANTITIES**  
 (STA. 121+00 TO STA. 127+00)  
 EXCAVATION: 33,807 C.Y.  
 EMBANKMENT: 73,173 C.Y.



SHEET NUMBER	TOTAL SHEETS
11REV	103
T.R. HUGHES BLVD.	
PRELIMINARY CREEK REALIGNMENT	
CRISWELL ENGINEERING 1663 NORTH MAIN ST. O'FALLON, MO 63366 (636) 240-4031	
RECEIVED AUG 25 2003 ENGINEERING DEPARTMENT	
DISCLAIMER OF RESPONSIBILITY I HEREBY SPECIFY THAT THE DOCUMENTS INTENDED TO BE AUTHENTICATED BY MY SEAL ARE LIMITED TO THIS SHEET, AND I HEREBY DISCLAIM ANY RESPONSIBILITY FOR ALL OTHER DRAWINGS, SPECIFICATIONS, ESTIMATES, REPORTS OR OTHER DOCUMENTS OR INSTRUMENTS RELATING TO OR INTENDED TO BE USED FOR ANY PART OR PARTS OF THE ARCHITECTURAL OR ENGINEERING PROJECT OR SURVEY. I HEREBY ALSO DISCLAIM ANY RESPONSIBILITY FOR THE ACCURACY OF THE SURVEY HEREBY SHOWN. THE SURVEY HAS BEEN TAKEN FROM PLANS PREPARED BY PARSONS BRINCKERHOFF DATED 10/16/01.	
PRELIMINARY NOT FOR CONSTRUCTION	
DESIGNED BY: DATE	REVISIONS BY: DATE
CHECKED BY: DATE	DATE: APRIL-2003
APPROVED BY: DATE	FILE:

2x7766  
 4/26/03  
 K. AMES  
 SUNDAY 11:04 AM