

DESIGN DESIGNATION
 A.D.T. = 30,000 vpd (estimated)
 DESIGN SPEED = 40 MPH
 (T.R. Hughes Blvd.)

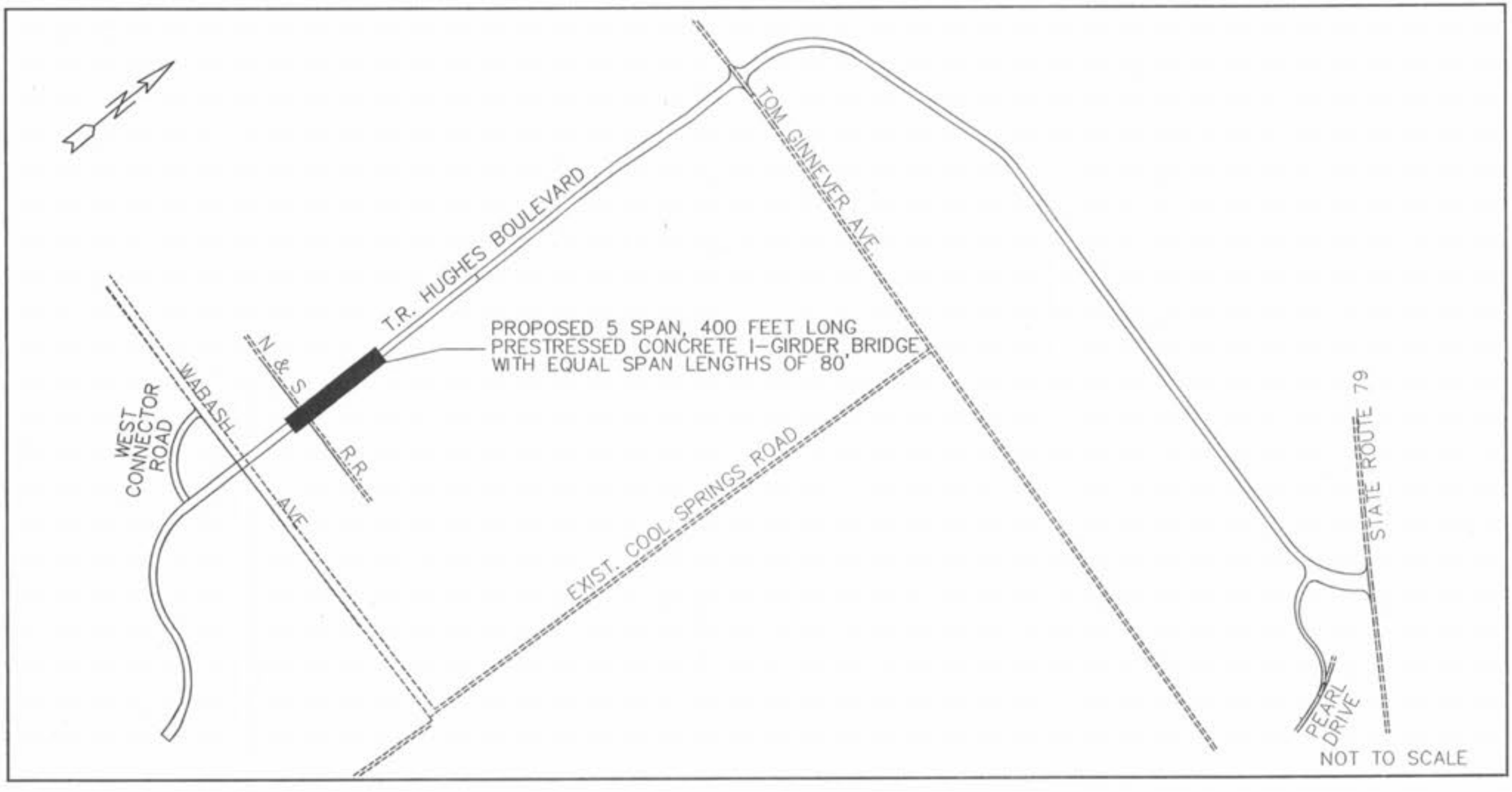
INDEX OF SHEETS

SHEET NO.	DESCRIPTION
1	COVER SHEET
2	ONE TO ONE
3	NOTES AND QUANTITIES
4-5	BORE DATA
6-7 & 16-17	END BENT DETAILS
8-15	INTERMEDIATE BENT DETAILS
18	PRESTRESSED I-GIRDER DETAILS
19-20	SLAB DETAILS
21-22	INTERMEDIATE DIAPHRAGM DETAILS
23	PRESTRESSED DECK PANEL DETAILS
24	SLAB DRAIN DETAILS
25	APPROACH SLAB DETAILS
26	VERTICAL DRAIN DETAILS
27-29	BARRIER CURB DETAILS
30	FENCE AND PAPAPET RAILING DETAILS
31-34	REINFORCING STEEL SHEETS
35	AS-BUILT PILE DATA SHEET

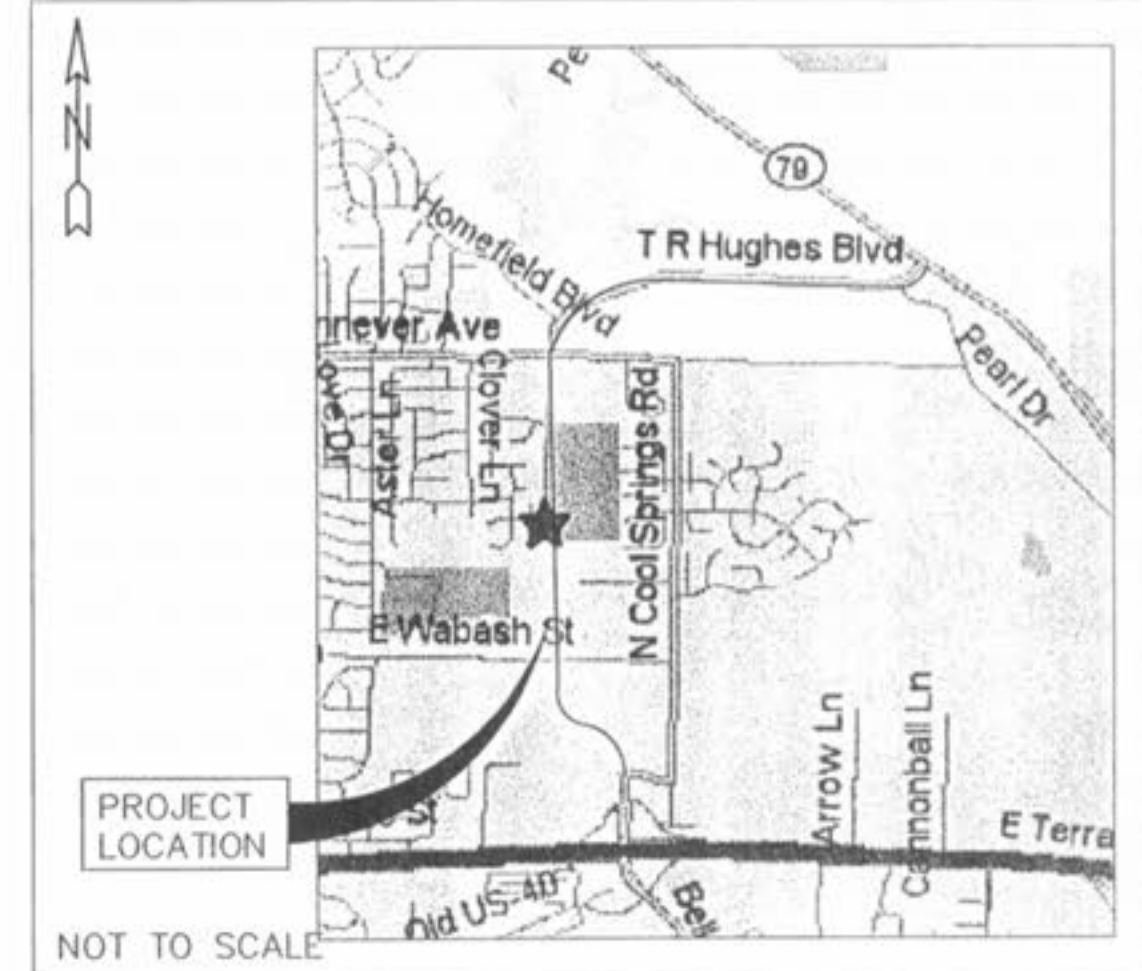
CITY OF O'FALLON

DEPARTMENT OF COMMUNITY DEVELOPMENT

CONSTRUCTION PLANS (FOR BRIDGE ONLY)



DISCLAIMER:
 THE ELEVATION DATUM USED TO DEVELOP THE DESIGN IS BASED ON THE DATUM PRESENTED ON THE CONSTRUCTION PLANS PRODUCED BY PARSONS BRINCKERHOFF AND SEALED ON 10/16/01. THE CONTRACTOR SHOULD VERIFY THE BENCHMARK AND RAILWAY ELEVATIONS PRIOR TO BEGINNING CONSTRUCTION.



T.R. HUGHES BOULEVARD EXTENSION

REVISED
 PLANS PER
 VALUE ENGINEERING
 DOES NOT CONTAIN
 BENT 4 MODIFICATION
 OR DECK VERTICAL
 CURB MODIFICATION
 CB
 12-13-07
 10-28-2003



DISCLAIMER:
 UNDERGROUND FACILITIES, STRUCTURES AND UTILITIES ARE NOT SHOWN ON THIS SET OF PLANS, AND ARE NOT THE RESPONSIBILITY OF SHAFER, KLINE AND WARREN, INC. SEE CIVIL DRAWINGS FOR THESE ITEMS AND BENCHMARK INFORMATION.

CITY OF O'FALLON
 DEPARTMENT OF COMMUNITY DEVELOPMENT
 O'FALLON, MISSOURI

APRIL 9, 2003

KEN MORGAN, P.E.
 MANAGING DIRECTOR OF COMMUNITY DEVELOPMENT

CHRISTINE LOOK, P.E.
 DIRECTOR OF PUBLIC WORKS



SHAFER, KLINE and WARREN, Inc.
 CONSULTING ENGINEERS
 107 BUTLER ST
 P.O. BOX 366
 MACON MO. 63552
 (660) 385-6441

200846