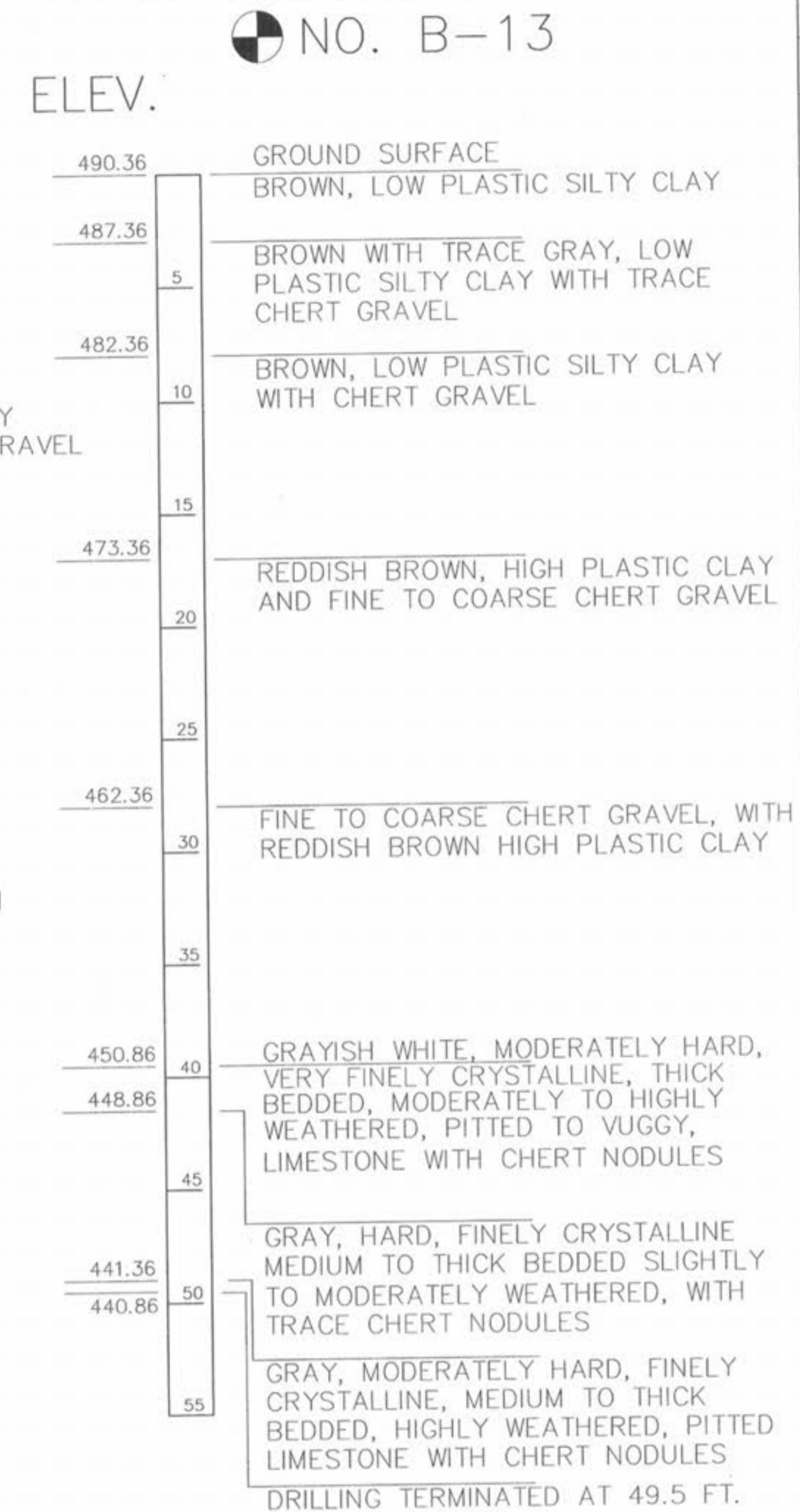
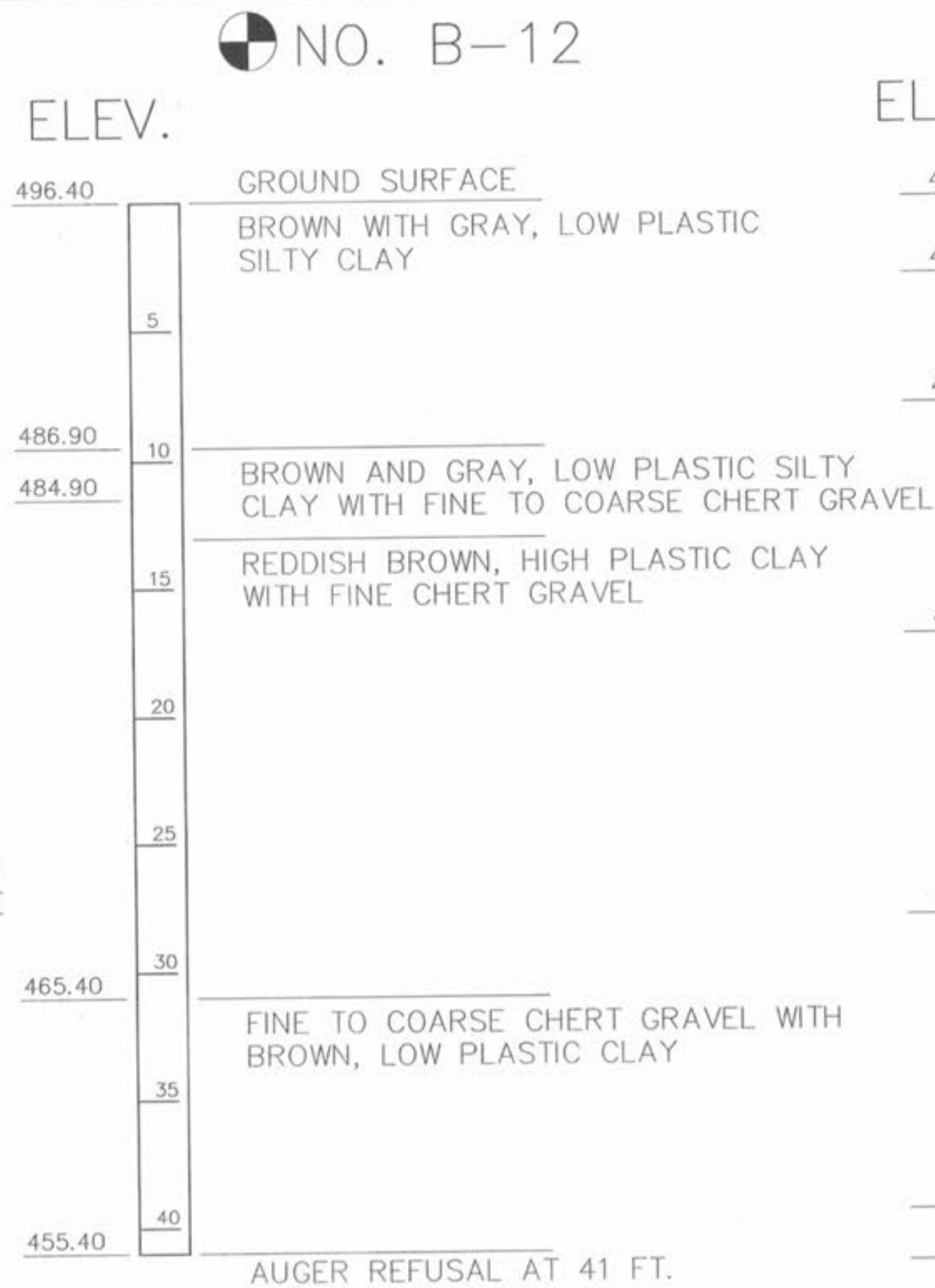
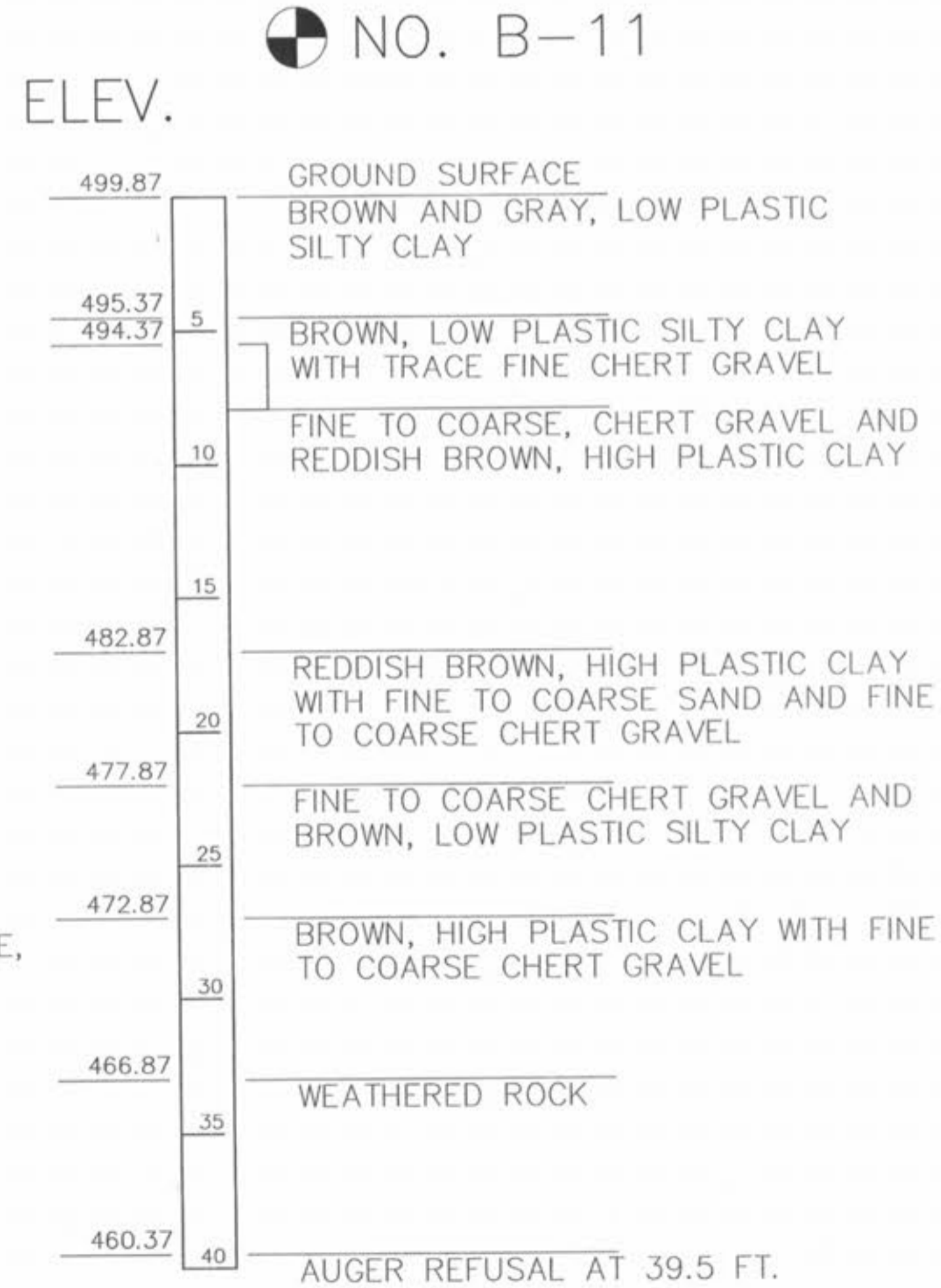
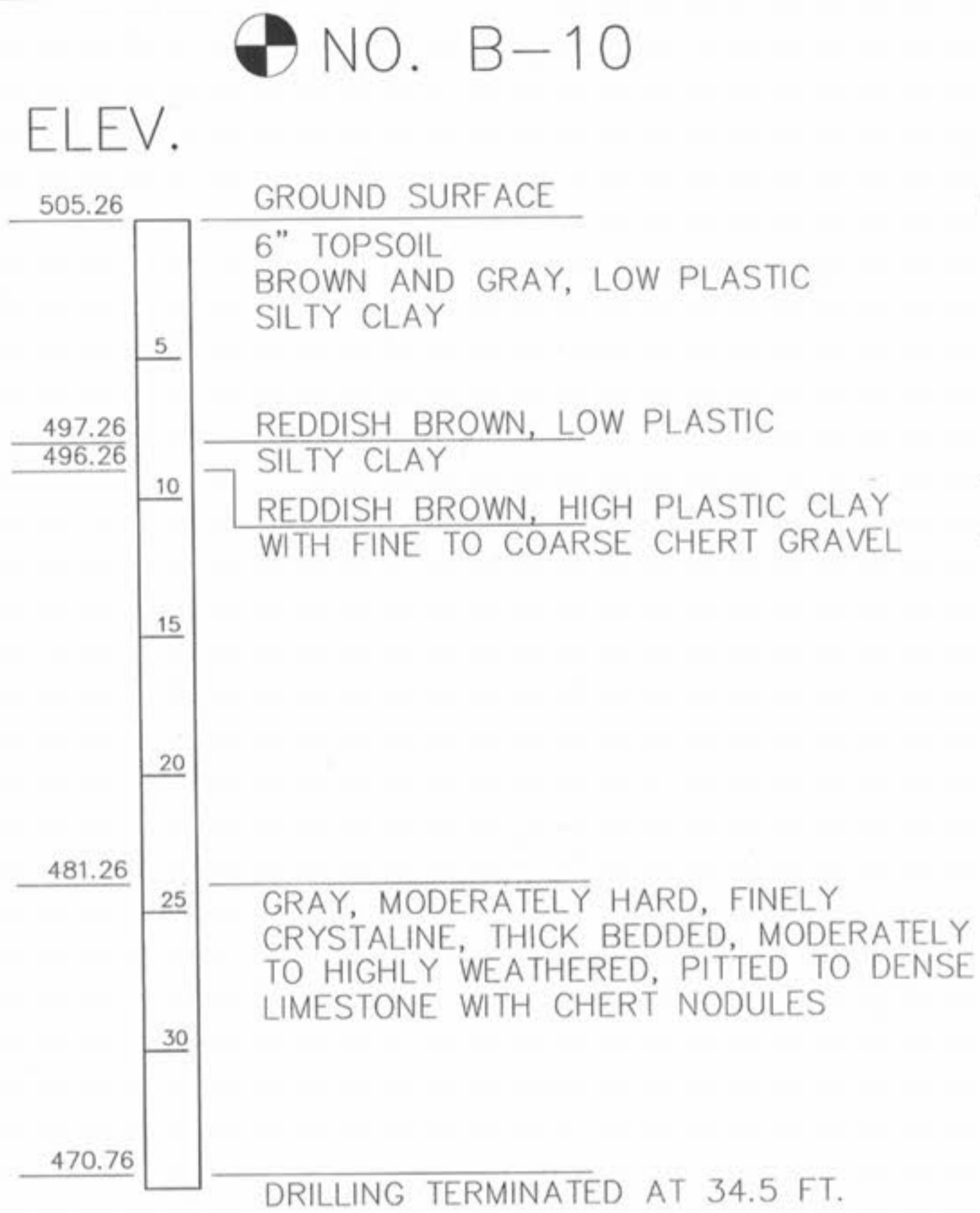
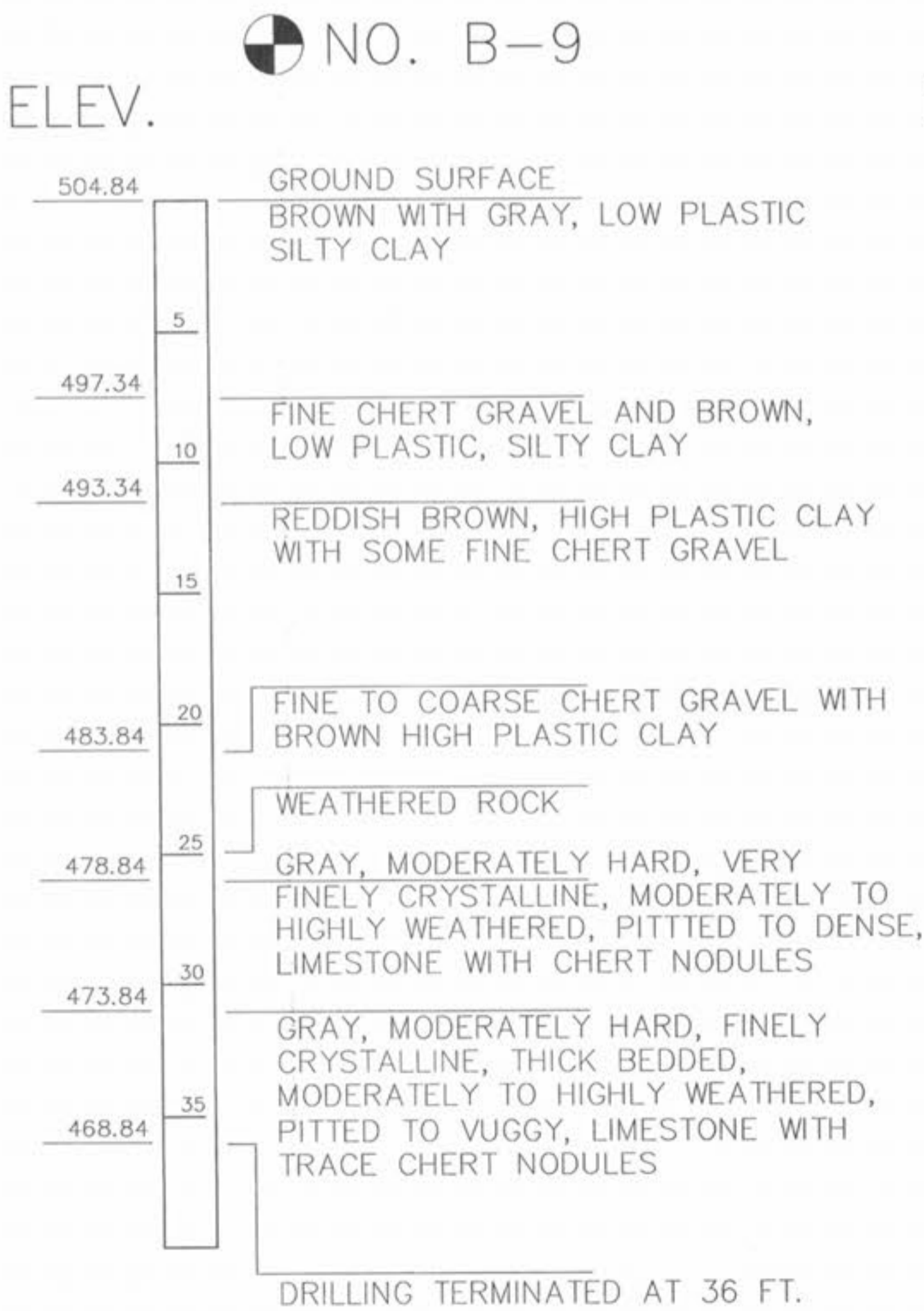
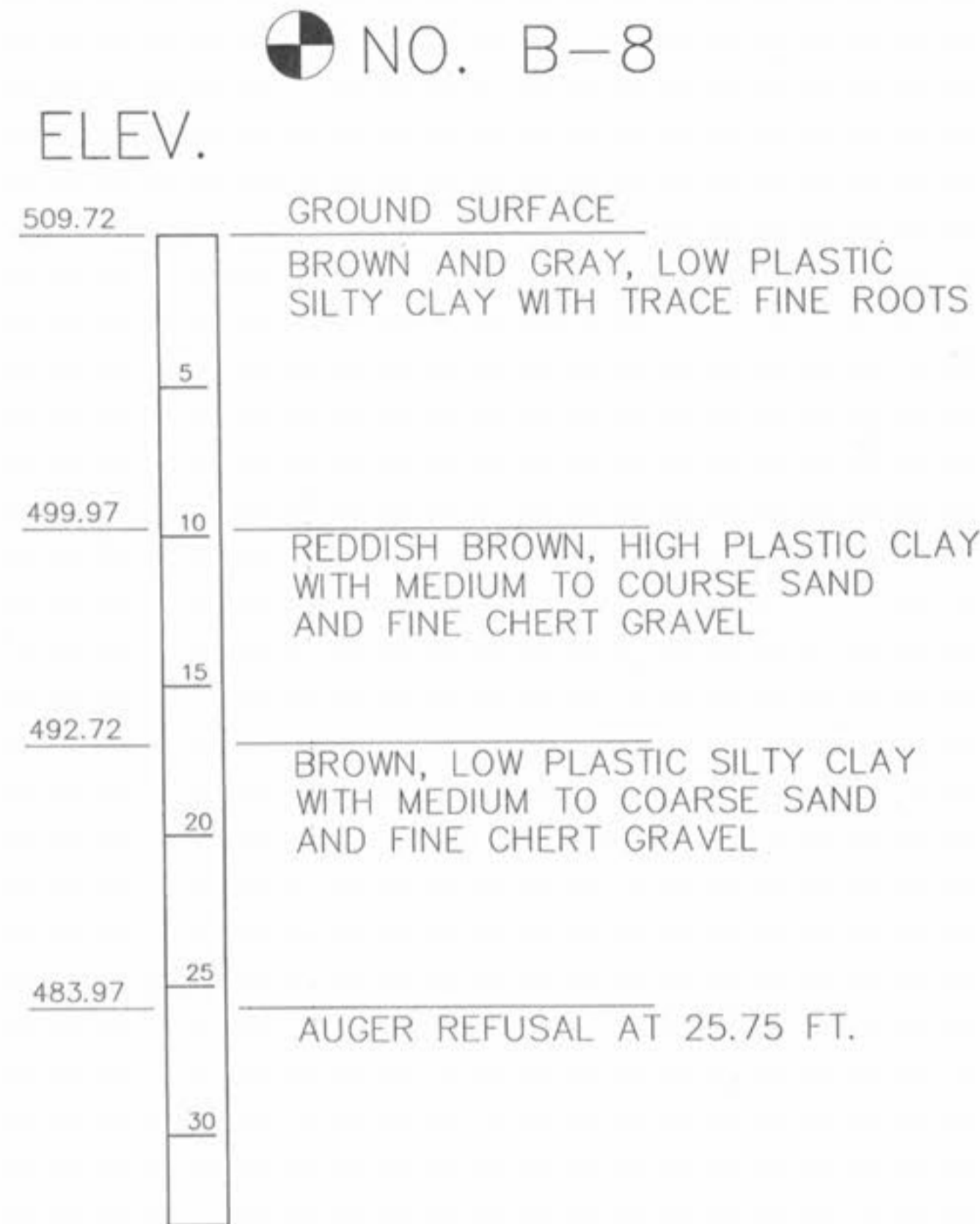


# BORING DATA

FOR LOCATION OF BORINGS, SEE SHEET 2.



SCI Engineering provided information for the following borings:

- B-8, B-9, B-10, B-11, B-12, B-13, B-14 and B-15.

ENGINEER'S AUTHENTICATION: The responsibility for professional engineering liability on this project is hereby limited to the set of plans authenticated by the seal, signature and date hereto attached. Responsibility is disclaimed for all other engineering plans involved in this project and specifically excludes revisions after this date, unless reauthenticated.



CITY OF O'FALLON PROJECT #210-005



T.R. HUGHES BLVD.  
CITY OF O'FALLON  
BORING DATA(1 of 2)

SHEET NO. 4 OF 35  
200846

Shafer, Kline and Warren, Inc.



107 BUTLER STREET  
P.O. BOX 366  
MACON, MO 63552

PHONE: (660) 385-6441  
FAX: (660) 385-6614

CIVIL ENGINEERS - ELECTRICAL ENGINEERS - MECHANICAL ENGINEERS - LAND SURVEYORS - LAND PLANNERS  
\*Full-Service-Engineering Co. founded 1958 • A.C. Kline & Associates Incorporated 1947 • Shafer, Kline & Warren, P.A. founded 1950  
Shaffer, Kline & Warren, Inc. founded 1978 • Registered Professional Engineers

Designed By	SIH
Drawn By	BW
Checked By	SIH
Issue Date:	

NO.	DATE	REVISIONS
6		
5		
4		
3		
2		
1		

BY: APP'D