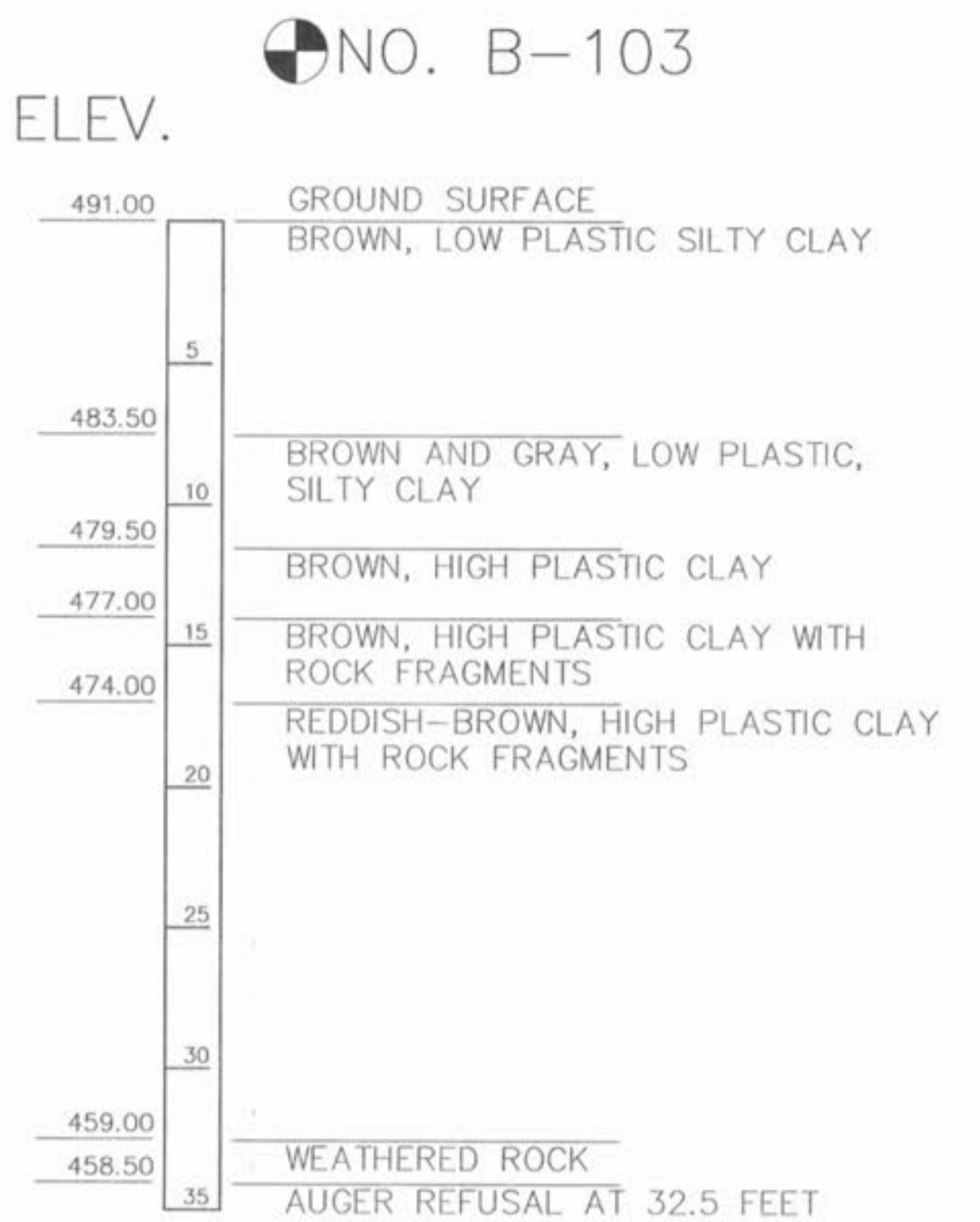
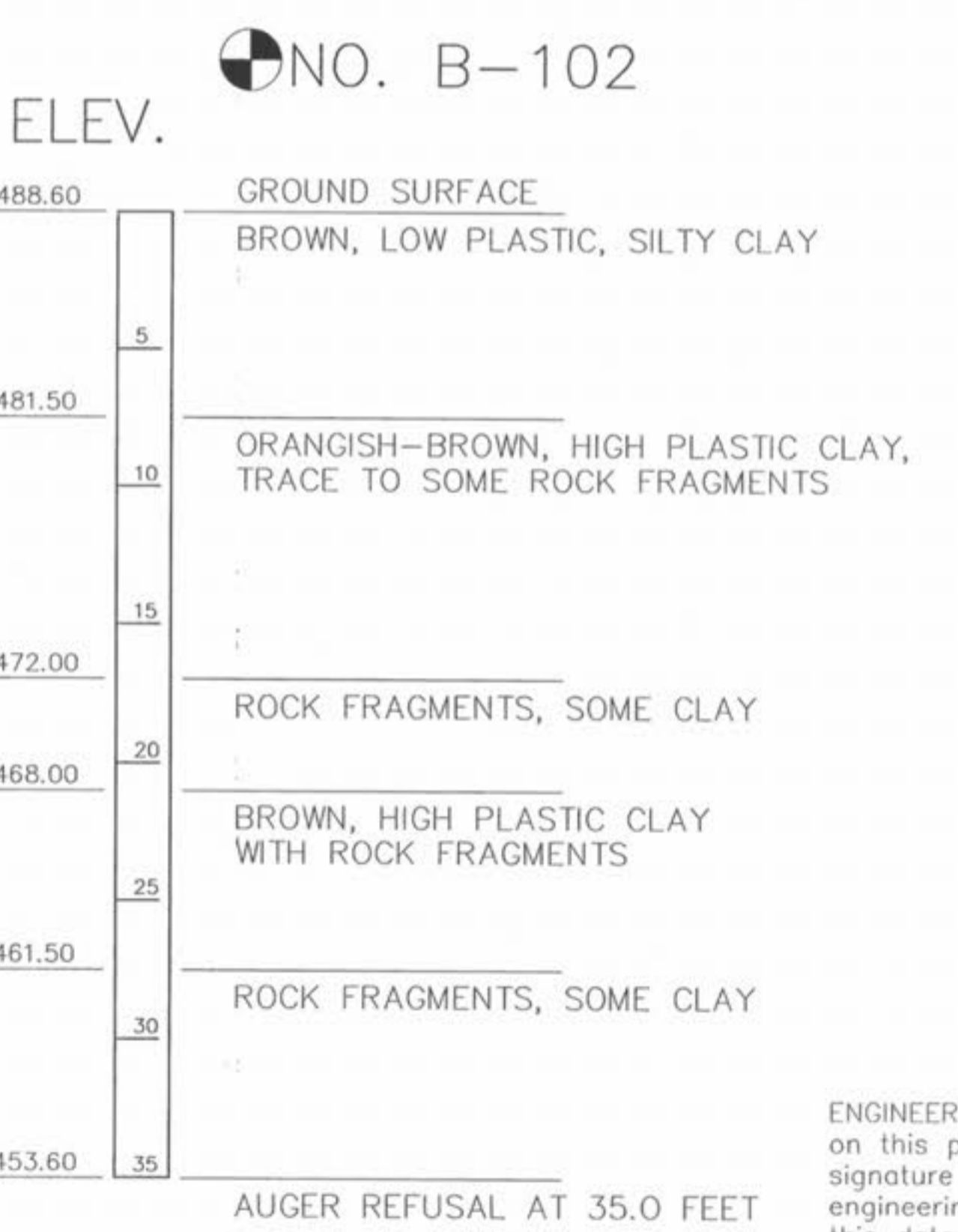
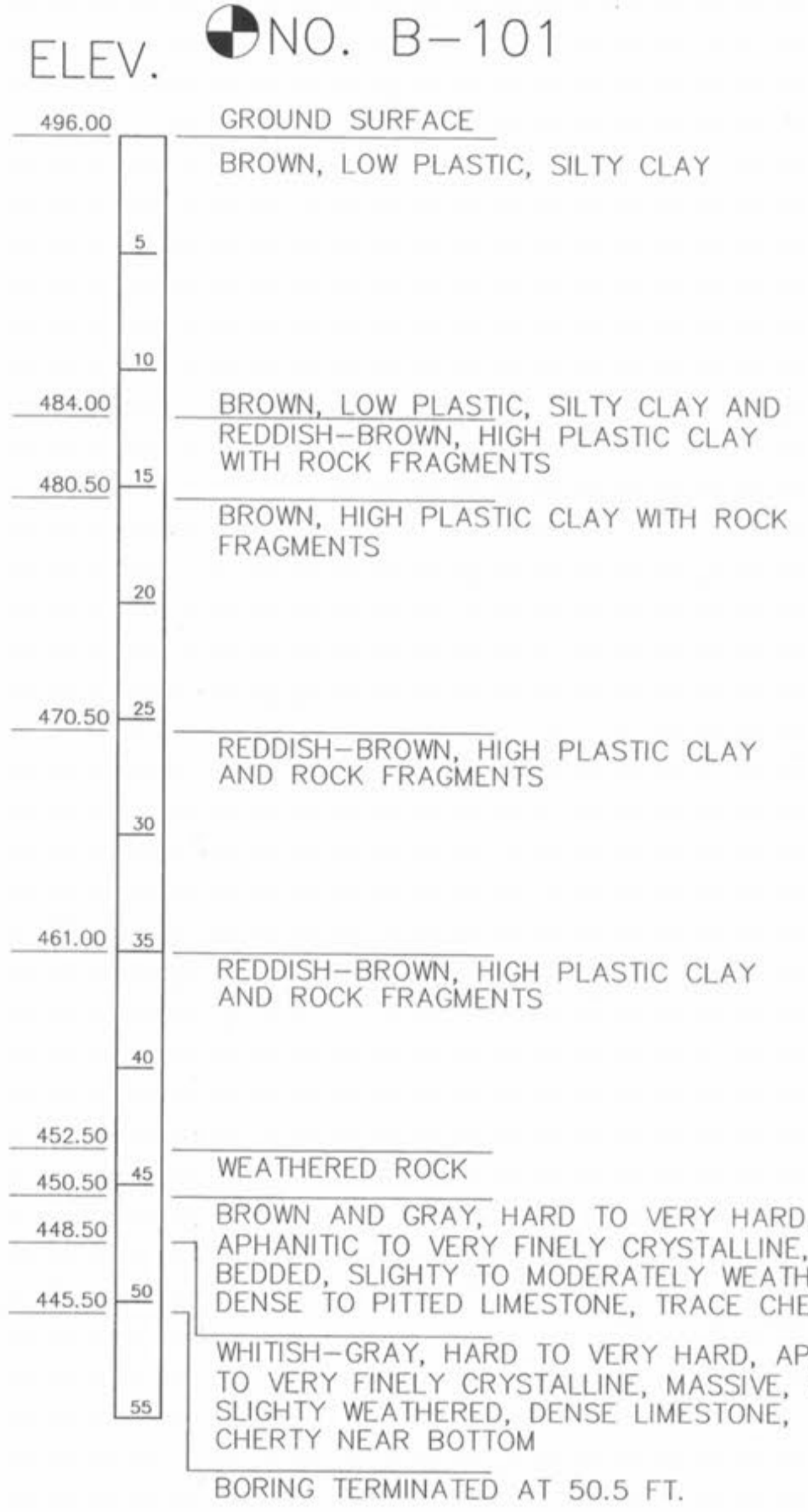
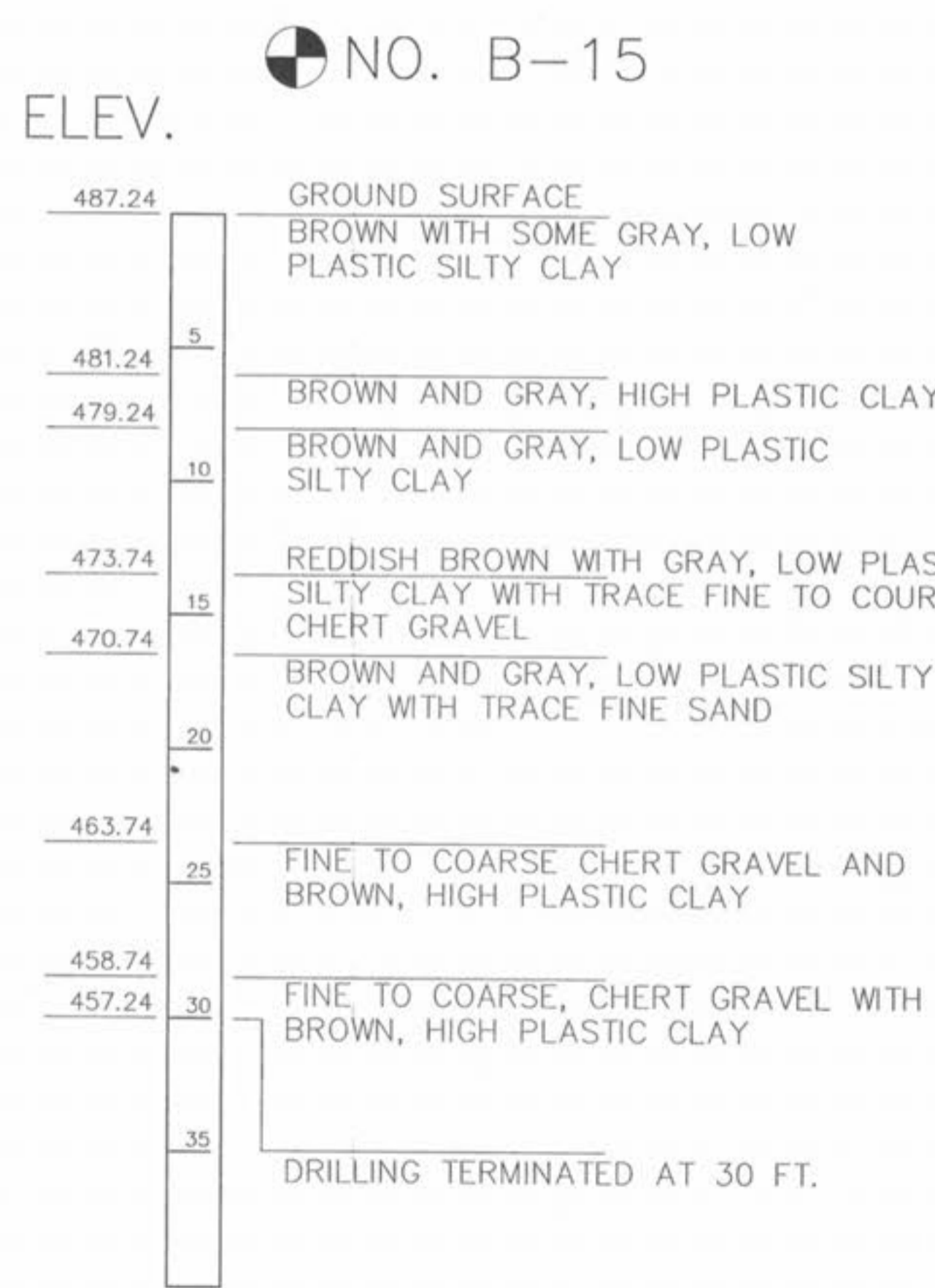
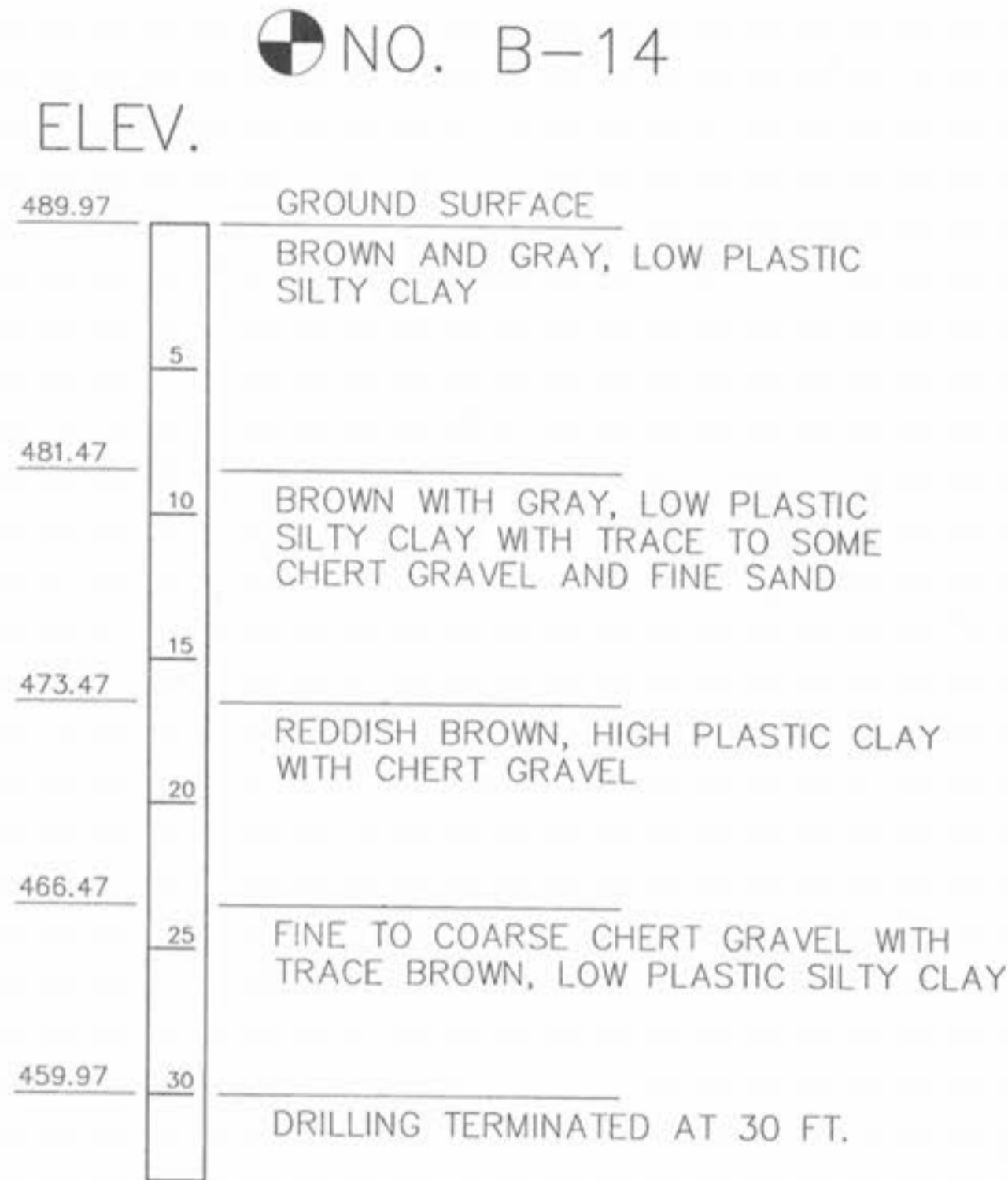


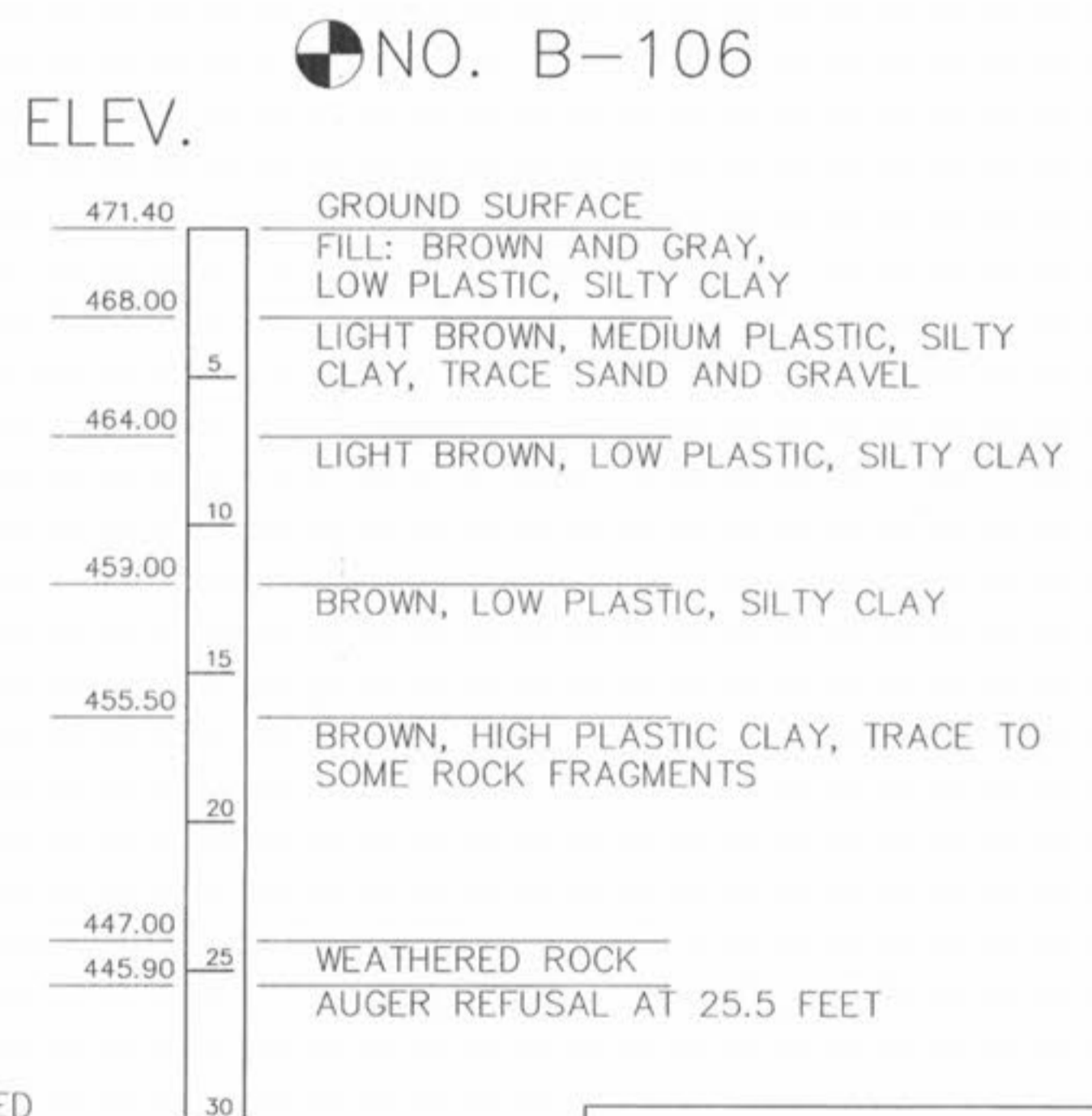
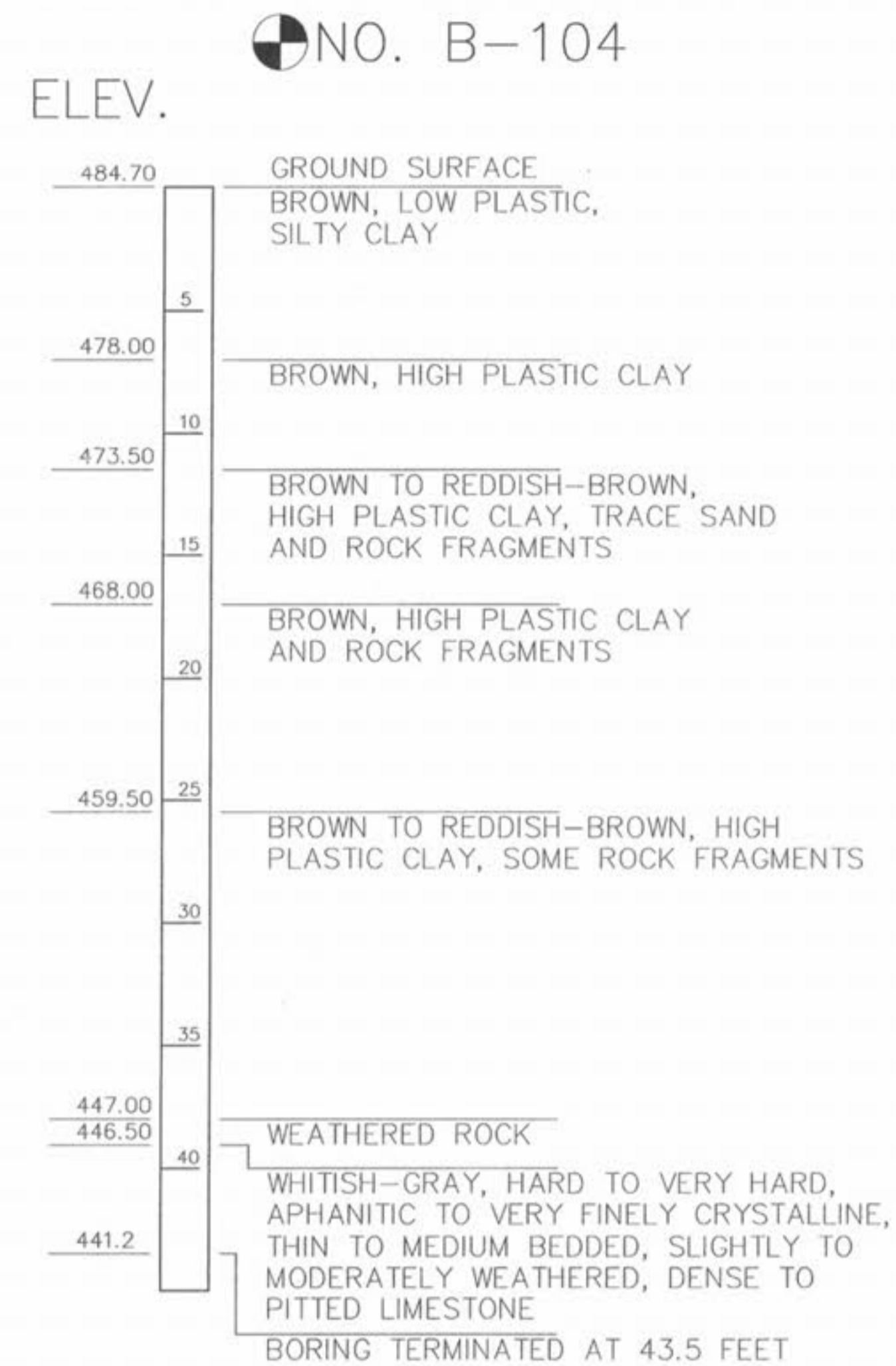
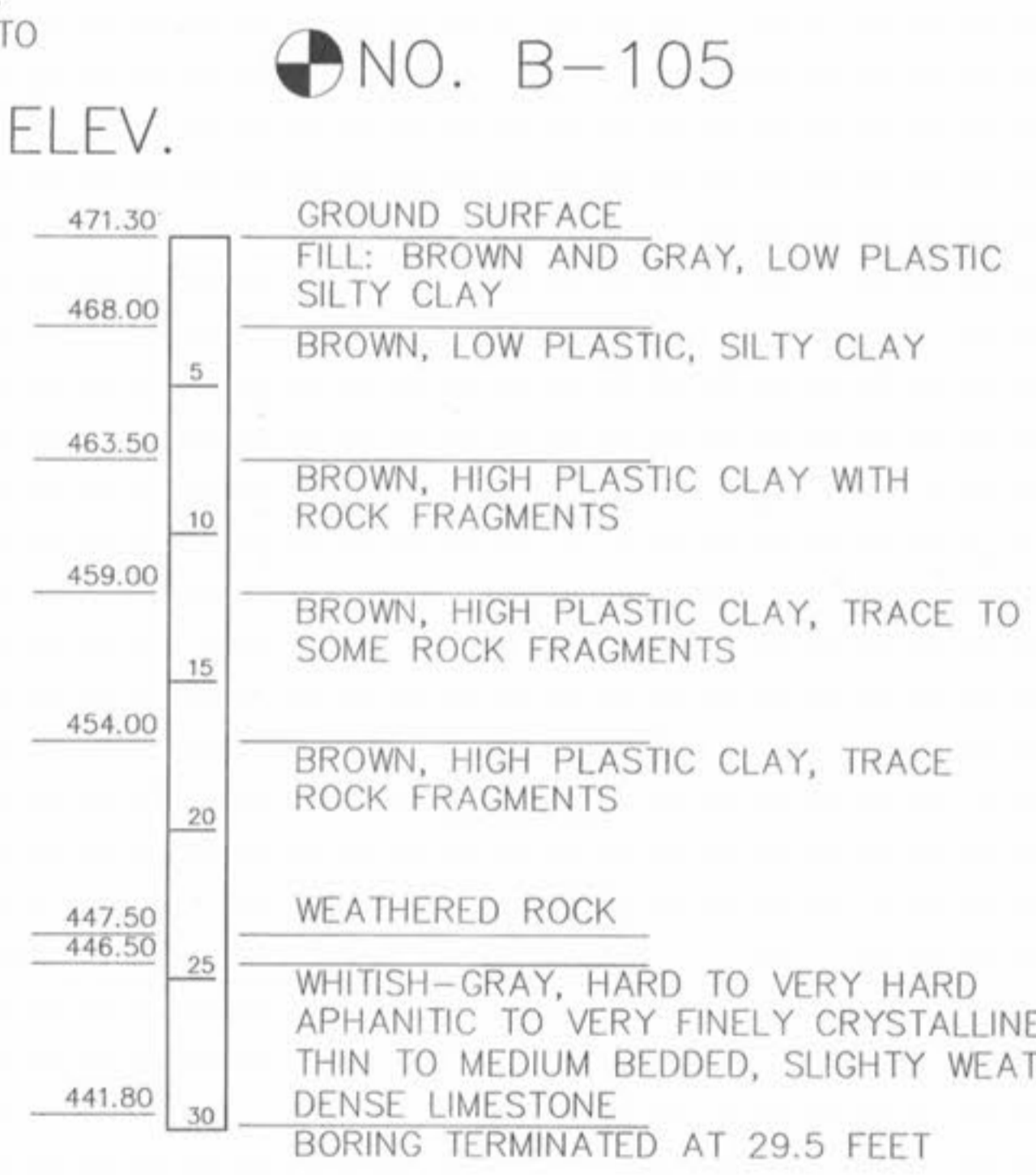
BORING DATA

FOR LOCATION OF BORINGS, SEE SHEET 2.



SCI Engineering provided information for the following borings:
B-8, B-9, B-10, B-11, B-12, B-13, B-14 and B-15.

Jacobi Geotechnical provided information for the following borings:
B-101, B-102, B-103, B-104, B-105 and B-106



AUTOCAD INFORMATION BLOCK
DRAWING: 20846BOR
BY: BJW
DATE: 5/6/03
PLOT SCALE: 10
XREF DWG: N/A

ENGINEER'S AUTHENTICATION: The responsibility for professional engineering liability on this project is hereby limited to the set of plans authenticated by the seal, signature and date hereto attached. Responsibility is disclaimed for all other engineering plans involved in this project and specifically excludes revisions after this date, unless reauthenticated.



CITY OF O'FALLON
PROJECT #210-005



DESIGNED BY: SJH		DRAWN BY: BJW		CHECKED BY: SJH		ISSUE DATE:	
6	5	4	3	2	1	NO.	DATE
<p>Shafer, Kline and Warren, Inc. 107 BUTLER STREET P.O. BOX 366 MACON, MO 63552 PHONE: (660) 385-6441 FAX: (660) 385-6614 CIVIL ENGINEERS - ELECTRICAL ENGINEERS - MECHANICAL ENGINEERS - LANDSCAPE ARCHITECTS - LAND PLANNERS Tuller-Kerr-Hoodwood Co. founded 1885 • A.C. Edwards & Associates founded 1947 • Shafer, Kline & Warren, P.A. founded 1980 Shaffer, Griffin, Shafer, Inc. founded 1948 • Hamilton & Associates, Inc. founded 1981</p>							
T.R. HUGHES BLVD.							
CITY OF O'FALLON							
BORING DATA(2 of 2)							
SHEET NO. 5 OF 35							
200846							