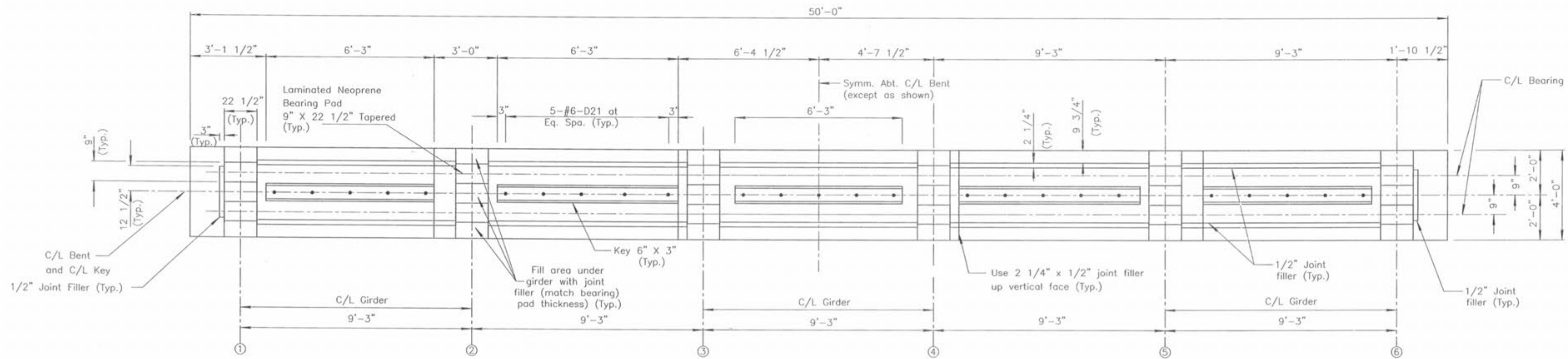
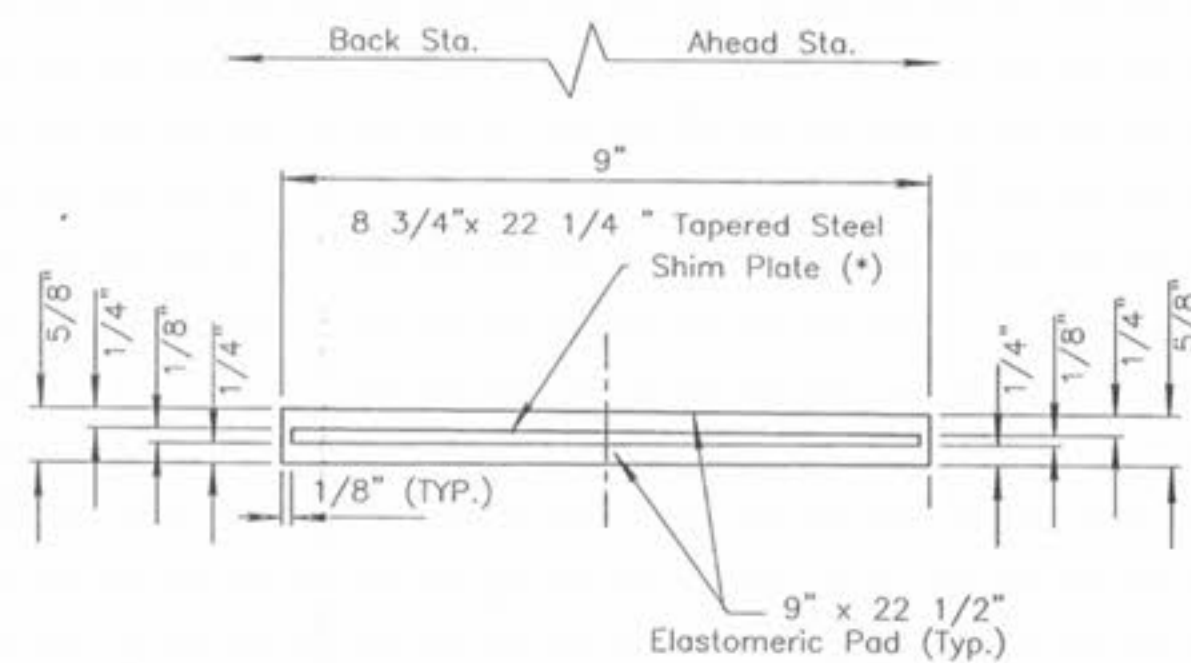


REVISION: UPDATED REINFORCING STEEL WEIGHT B/W 5/20/03

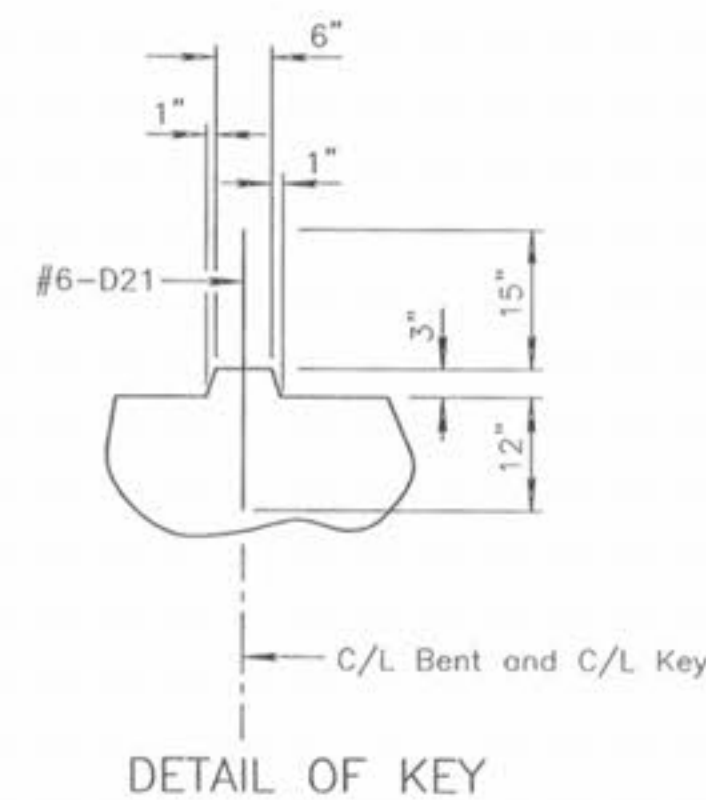


PLAN OF BEAM



DETAIL OF LAMINATED NEOPRENE BEARING PAD

(\*) The required shim plate shall be placed between the layers of elastomer and molded together to form an integral unit.

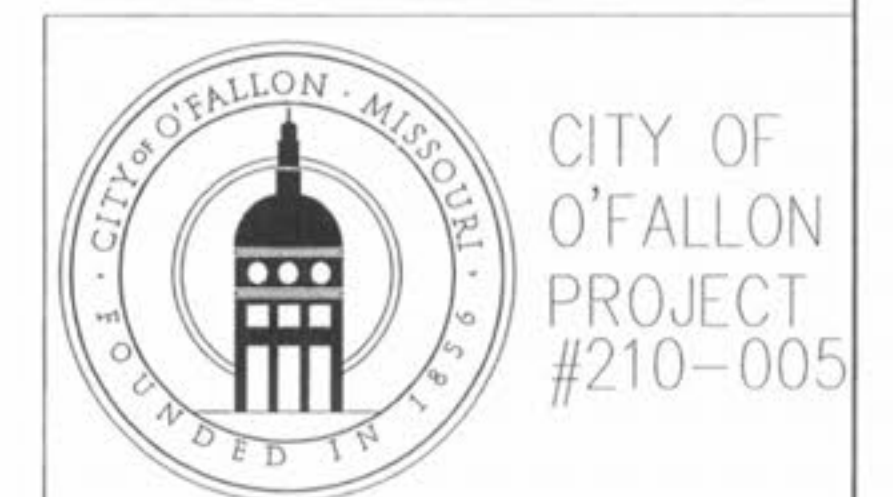


DETAIL OF KEY

SUBSTRUCTURE QUANTITY TABLE FOR BT. NO. 2		
ITEM		QUANTITY
Class 1 Excavation	cu. yd.	188
Structural Steel Piles (12 in)	lin. ft.	840
Pile Point Reinforcement	each	24
Class B Concrete (Substr)	cu. yd.	124.4
Reinforcing Steel (Substr)	lbs.	16,309

Note: These quantities are included in the Estimated Quantities table on Sheet No. 3.

ENGINEER'S AUTHENTICATION: The responsibility for professional engineering liability on this project is hereby limited to the set of plans authenticated by the seal, signature and date hereto attached. Responsibility is disclaimed for all other engineering plans involved in this project and specifically excludes revisions after this date, unless reauthenticated.



DETAILS INTERMEDIATE BENT NO. 2

NOTE: This drawing is not to scale. Follow dimensions.