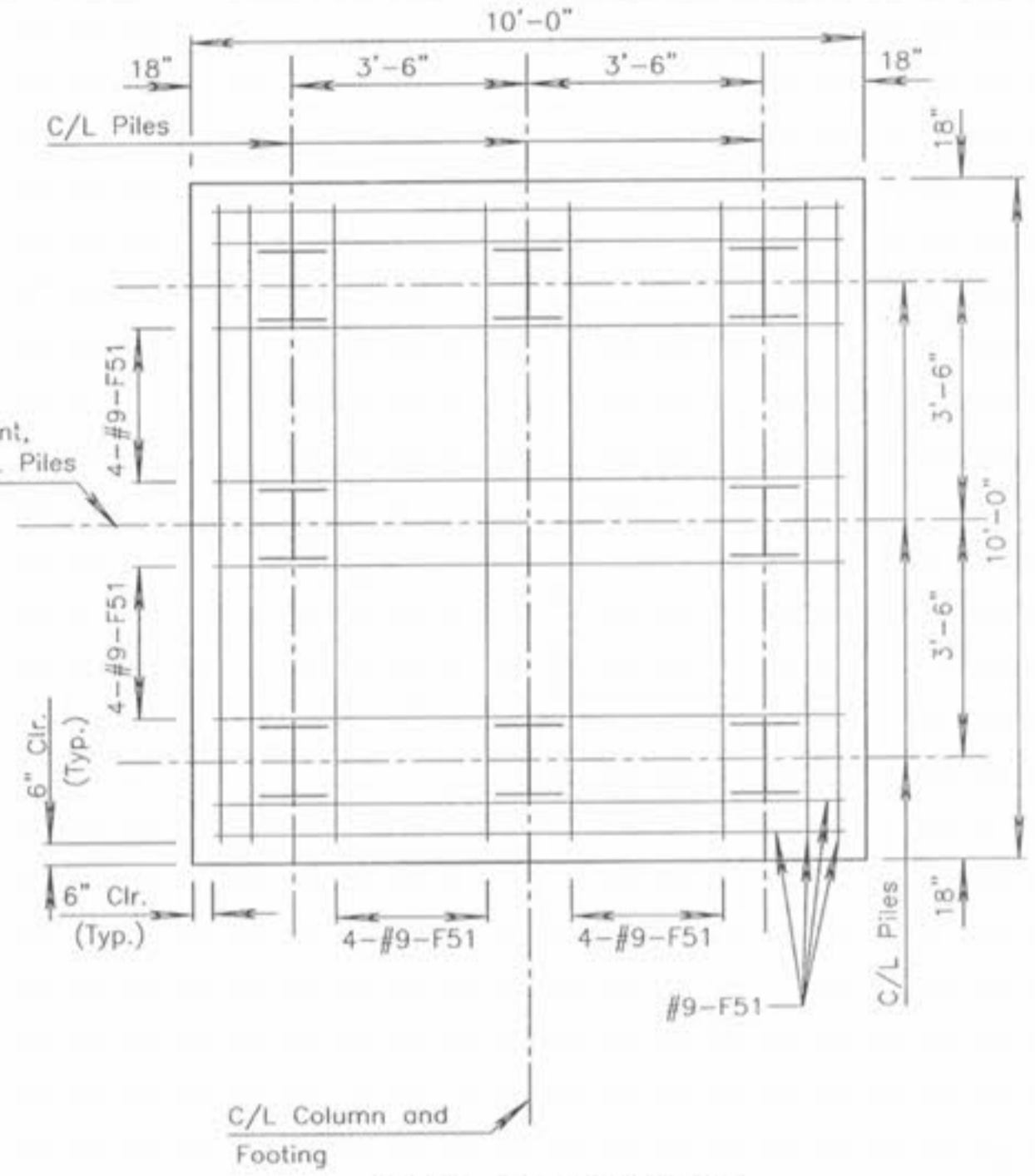
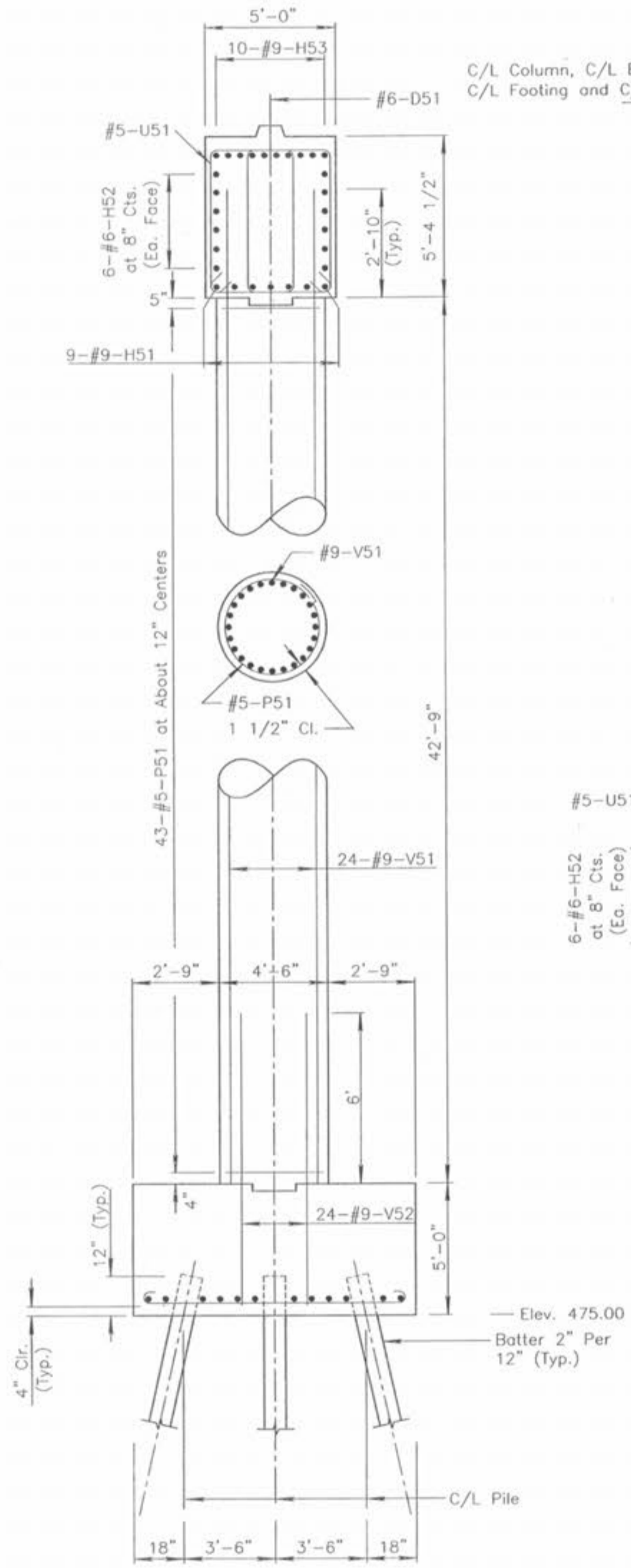
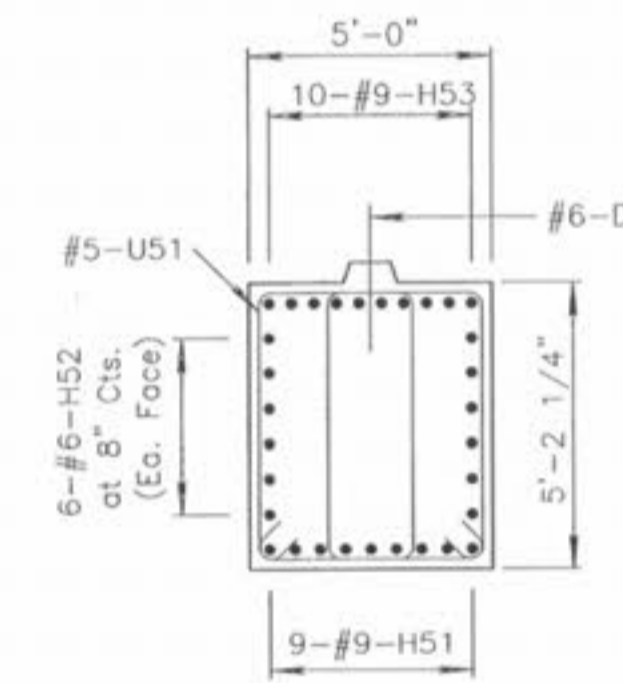


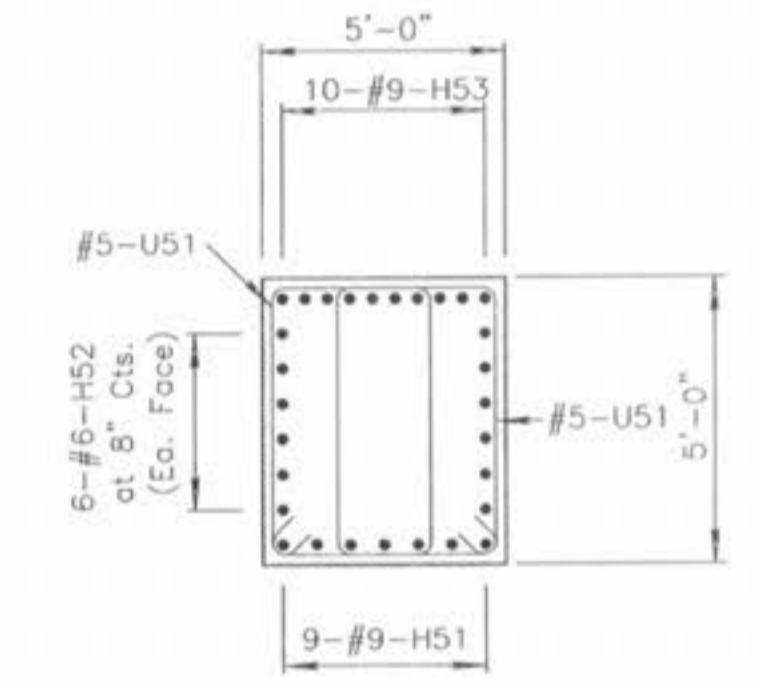
Note: Place U51 bars in pairs, offset horizontally, as shown in section.



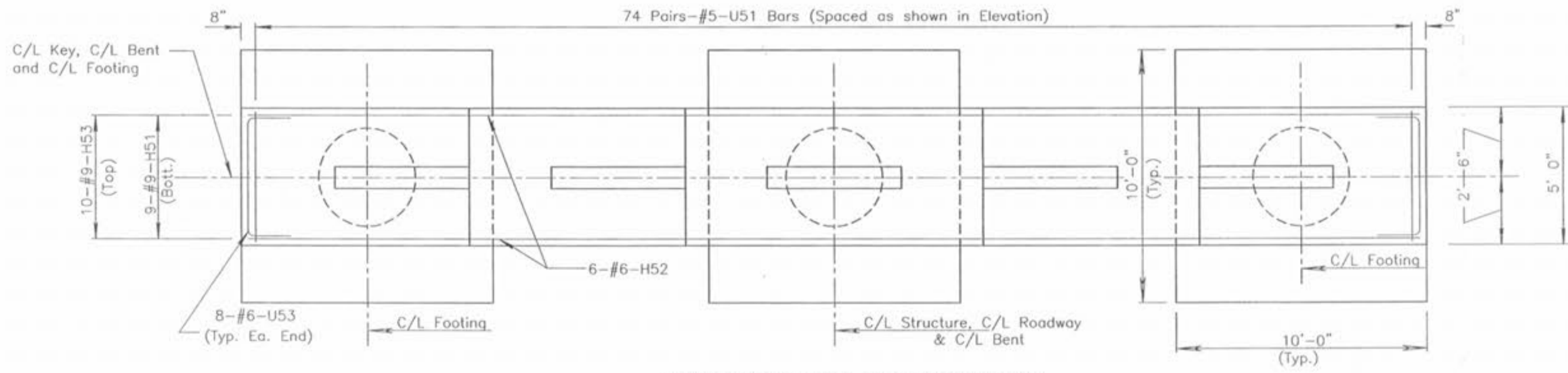
PLAN OF FOOTING SHOWING REINFORCEMENT



SECTION B-B



SECTION C-C



PLANS SHOWING REINFORCEMENT

SECTION A-A  
 Note: Place 4-#9-F51 bars in each space between piles and 2-#9-F51 bars outside piles, as shown (24-F51 bars per footing)

ENGINEER'S AUTHENTICATION: The responsibility for professional engineering liability on this project is hereby limited to the set of plans authenticated by the seal, signature and date hereto attached. Responsibility is disclaimed for all other engineering plans involved in this project and specifically excludes revisions after this date, unless reauthenticated.



DETAILS INTERMEDIATE BENT NO. 5

NOTE: This drawing is not to scale. Follow dimensions.