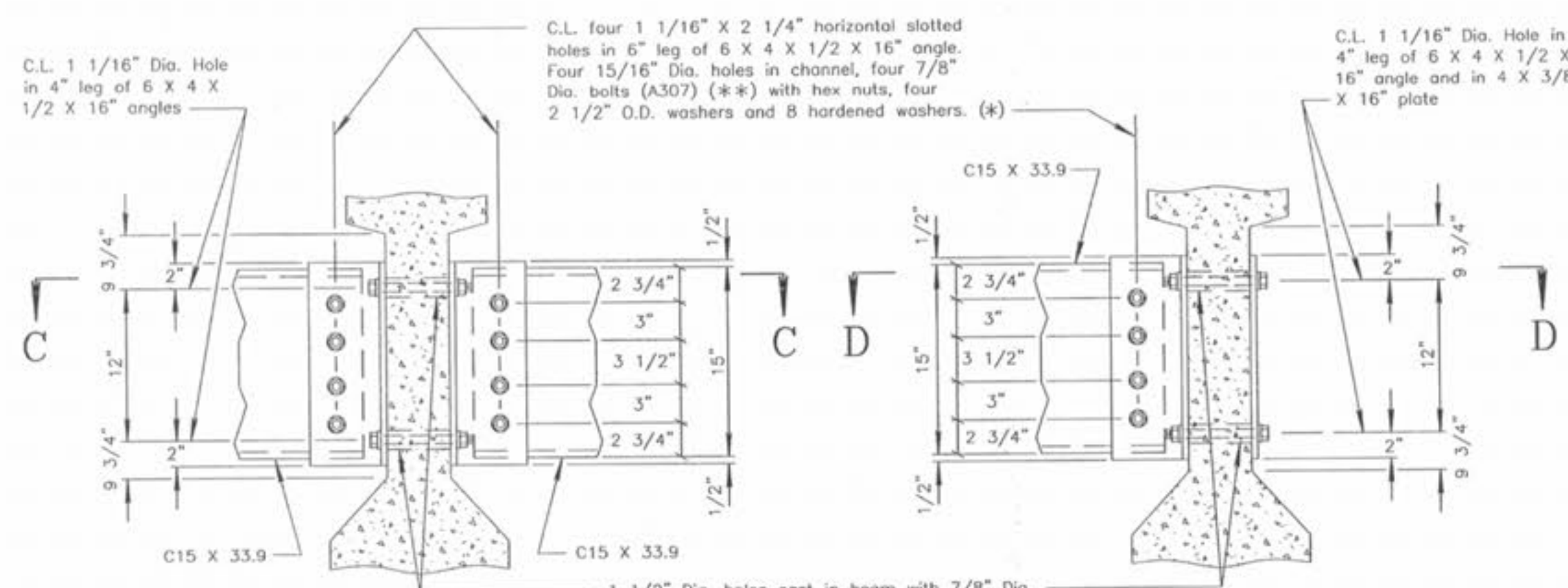
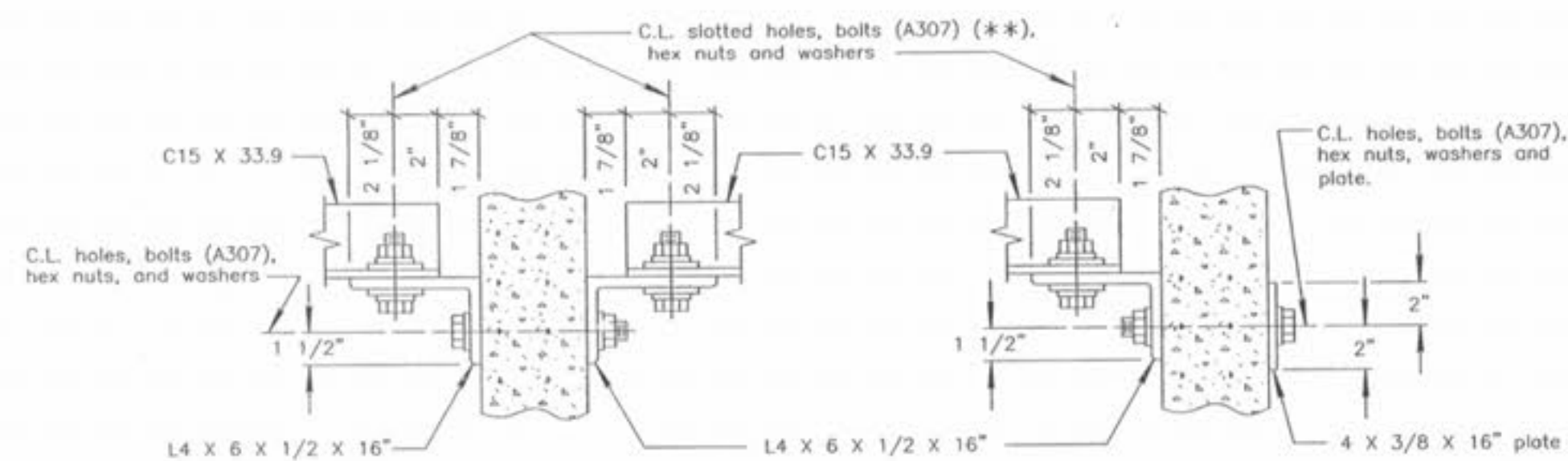


PART PLAN OF BRIDGE SHOWING GIRDER AND INTERMEDIATE STEEL DIAPHRAGM LAYOUT  
(Wings not shown, for clarity)



Detail "A"

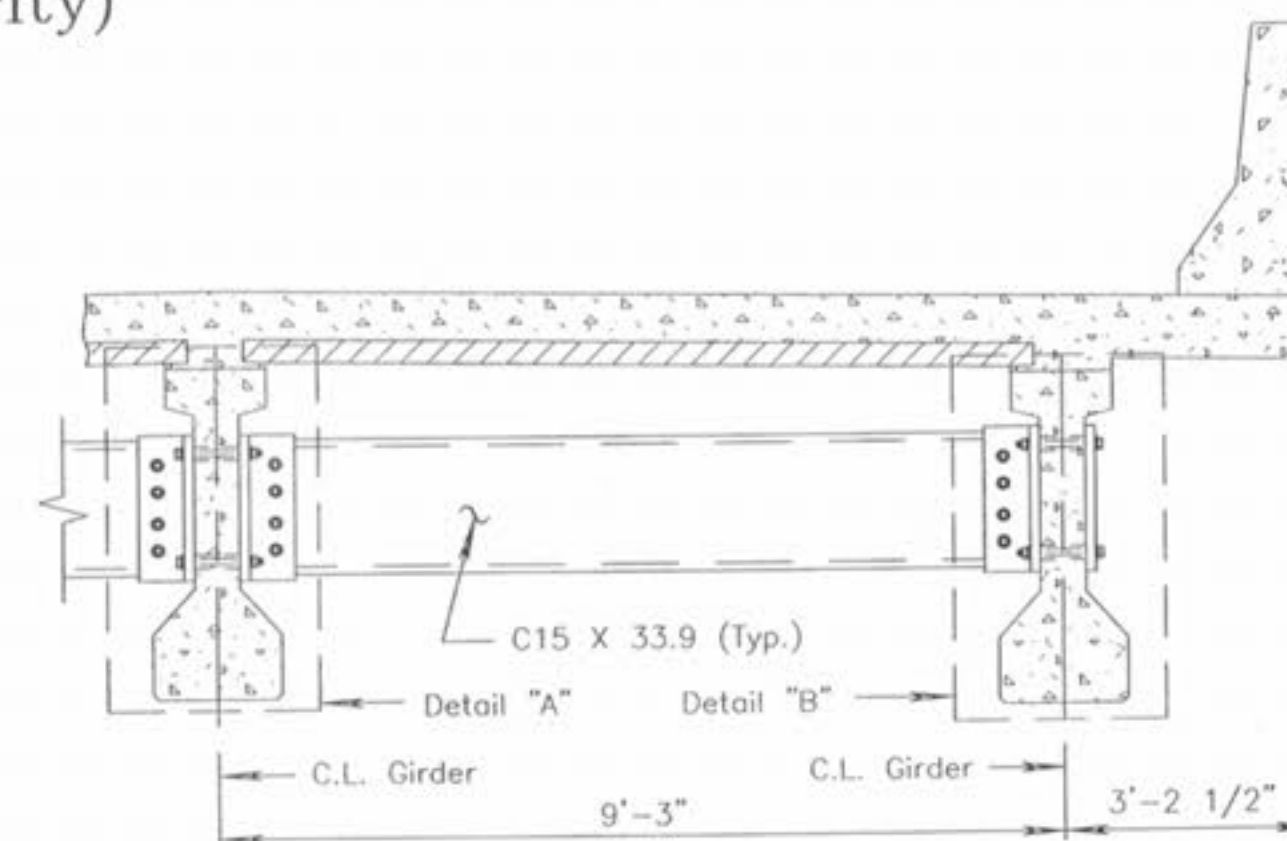
Detail "B"



Section C-C

Section D-D

DETAILS OF INTERMEDIATE DIAPHRAGMS WITHIN SPANS



PART SECTION SHOWING STEEL INTERMEDIATE DIAPHRAGMS

STEEL DIAPHRAGM NOTES:

- \* In lieu of 2-1/2" outside diameter washers, contractor may substitute a 3/16" (min. thickness) plate with four 15/16" diameter holes and one hardened washer per bolt.
  - \*\* These bolts shall be tightened to provide a tension of one-half that specified by Section 712.10.2 of the Missouri Standard Specifications. A325 bolts may be substituted for and installed in accordance with the requirements for the specified A307 bolts.
- All diaphragm materials including bolts, nuts, and washers shall be galvanized.
- Fabricated structural steel shall be ASTM A709 Grade 36, except as noted.
- Payment for furnishing and installing steel intermediate diaphragms shall be included in the contract unit price for Prestressed Concrete I-Girders.
- Shop drawings will not be required for steel intermediate diaphragms and angle connections.
- ENGINEER'S AUTHENTICATION: The responsibility for professional engineering liability on this project is hereby limited to the set of plans authenticated by the seal, signature and date hereto attached. Responsibility is disclaimed for all other engineering plans involved in this project and specifically excludes revisions after this date, unless reauthenticated.

NOTE: This drawing is not to scale. Follow dimensions.

STEEL INTERMEDIATE DIAPHRAGM DETAILS

