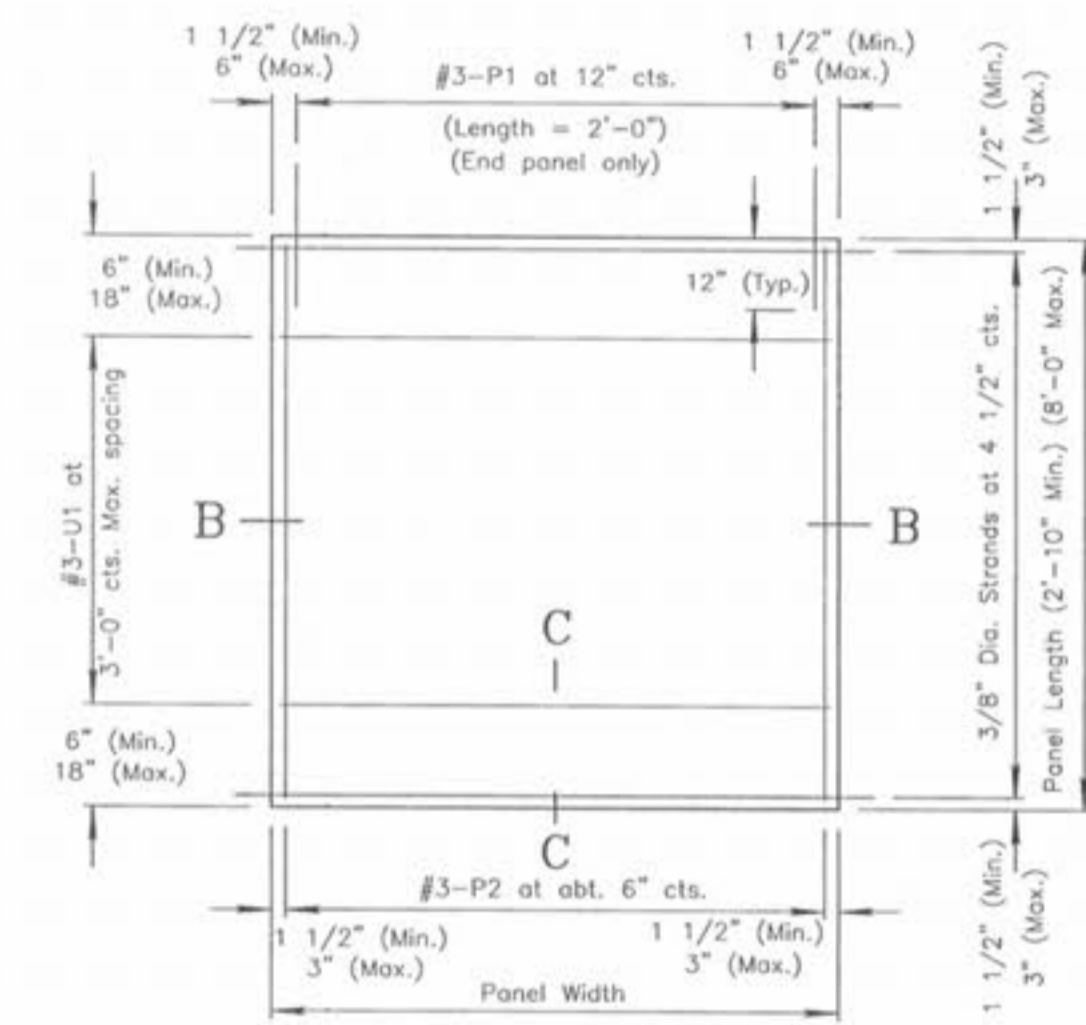
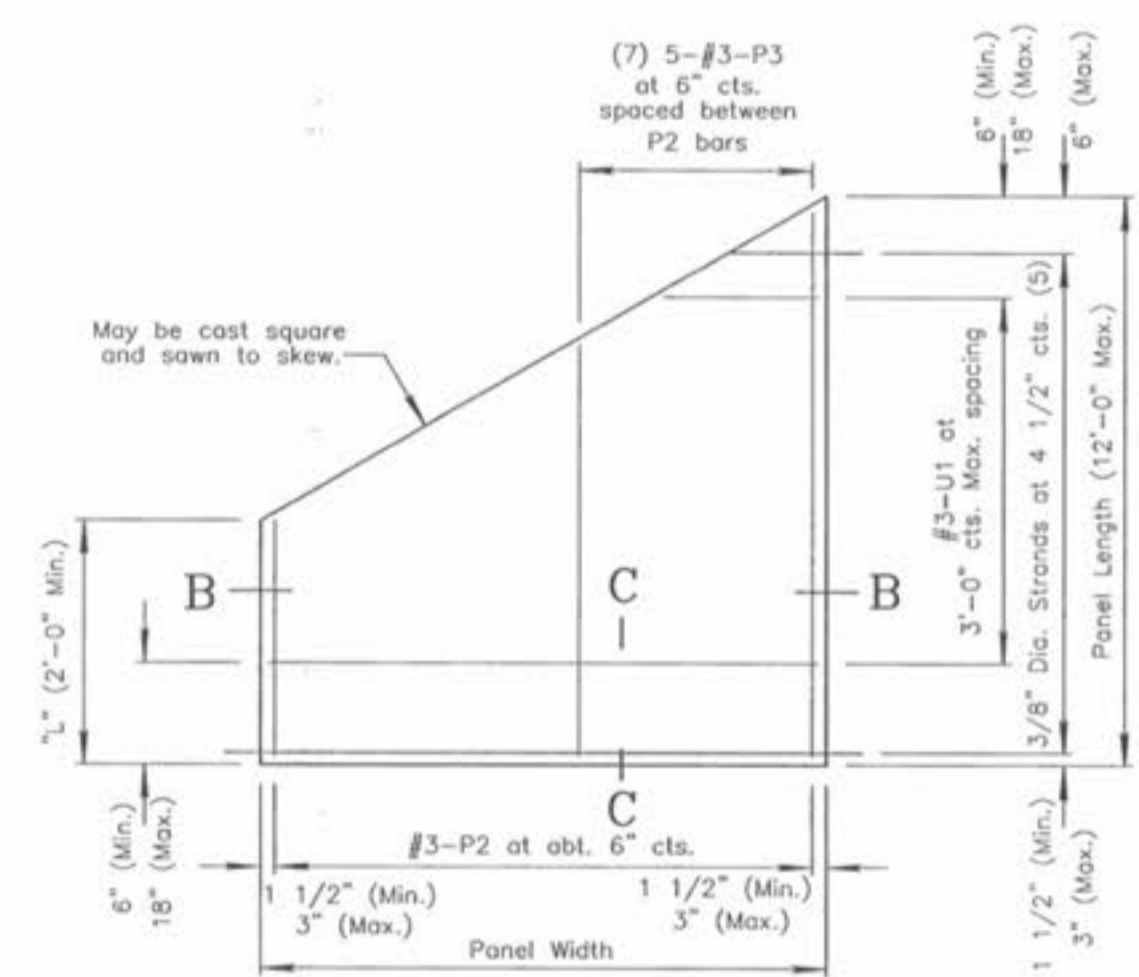


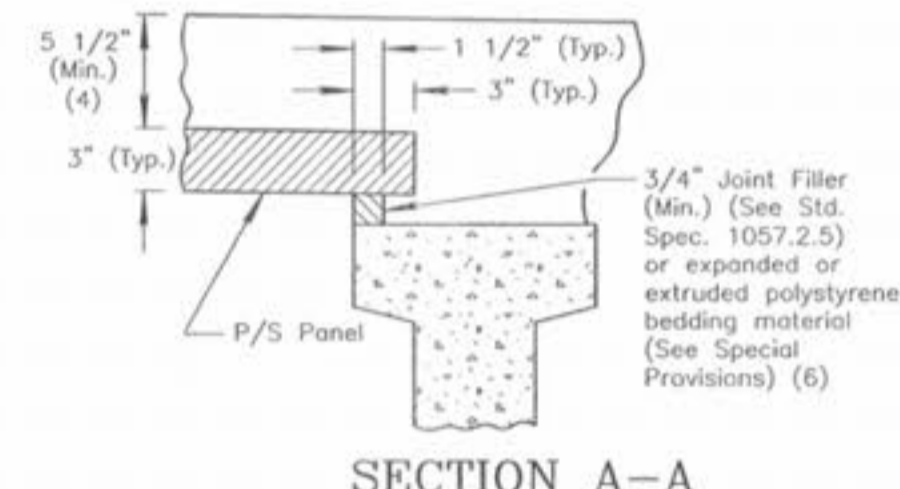
PLAN OF PRECAST PRESTRESSED PANELS PLACEMENT
(RT. ADVANCE SHOWN, LEFT ADVANCE AND SQUARE SIMILAR)



PLAN OF PRECAST PRESTRESSED PANEL



PLAN OF PRECAST PRESTRESSED PANEL
(SKEWED END - OPTIONAL)



SECTION A-A

NOTES: (CONT.)

Use slab haunching diagram on Sheet 20 for determining thickness of joint filler or polystyrene bedding material within the limits noted in General Notes.
All reinforcement other than prestressing strands shall be epoxy coated.
Precast panels may be in contact with stirrup reinforcing in diaphragms.
Cost of S-bars shall be included in the price bid for slab on I-Girder per square yard.
S-bars are not listed in bill of reinforcing.

GENERAL NOTES

PRESTRESSED PANELS:

Concrete for prestressed panels shall be Class A1 with $f'c = 6,000$ psi, $f'ci = 3,500$ psi.
The top surface of all panels shall receive a scored finish with a depth of scoring of $1/8$ " perpendicular to the prestressing strands in the panels (see Special Provisions).
Prestressing tendons shall be high-tensile strength uncoated seven-wire (7), low-relaxation strands for prestressed concrete conforming to AASHTO M203 Grade 270, with nominal diameter of strand = $3/8$ ", nominal area = 0.085 Sq. In. and minimum ultimate strength = 22.95 kips (270 ksi). Larger strands may be used with the same spacing and initial tension.
Initial prestressing force = 17.2 kips per strand.
The method and sequence of releasing the strands shall be shown on the shop drawings.
Suitable anchorage devices for lifting panels may be cast in panels, provided they are shown on the shop drawings and approved by the engineer. Panel lengths shall be determined by the contractor and shown on the shop drawings.

When square end panels are used at skewed bents, it is required that the skewed portion be cast full depth. No separate payment will be made for the additional concrete and reinforcing required.
Support from diaphragm forms is required under the optional skewed end until cast-in-place concrete has reached 3,000 psi compressive strength.

Minimum joint filler or polystyrene bedding material thickness shall be $3/4$ ". Thicker joint filler or polystyrene bedding material may be used on one or both sides of the girder to reduce cast-in-place concrete thickness, within tolerances. No more than 2" total thickness of joint filler or polystyrene bedding material shall be used.

The same thickness of joint filler material shall be used under any one edge of any panel except at locations where top flange thickness may be stepped. The maximum change in thickness between adjacent panels shall be $1/4$ ". The polystyrene bedding materials may be cut to match haunch above top of flange.

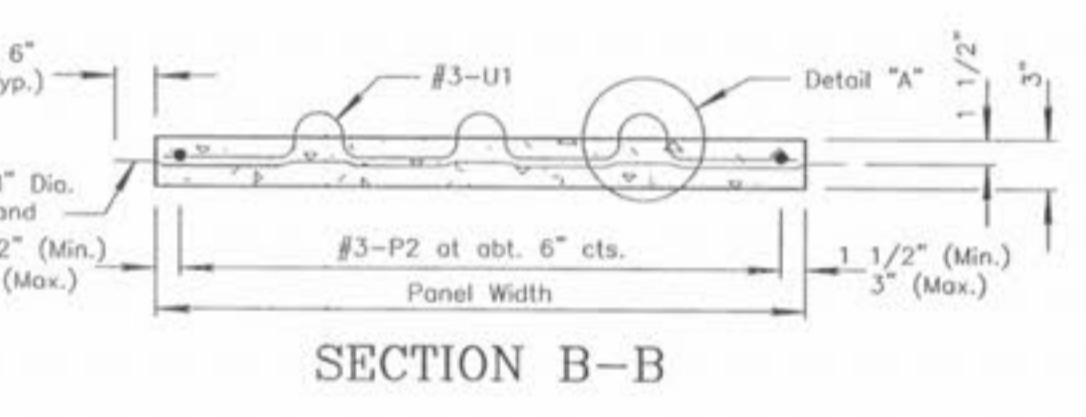
Slab thickness over prestressed panels varies due to girder camber.

At the contractor's option, the variation in slab thickness over prestressed panels may be eliminated or reduced by increasing and varying the girder top flange thickness. Dimensions shall be shown on the shop drawings.

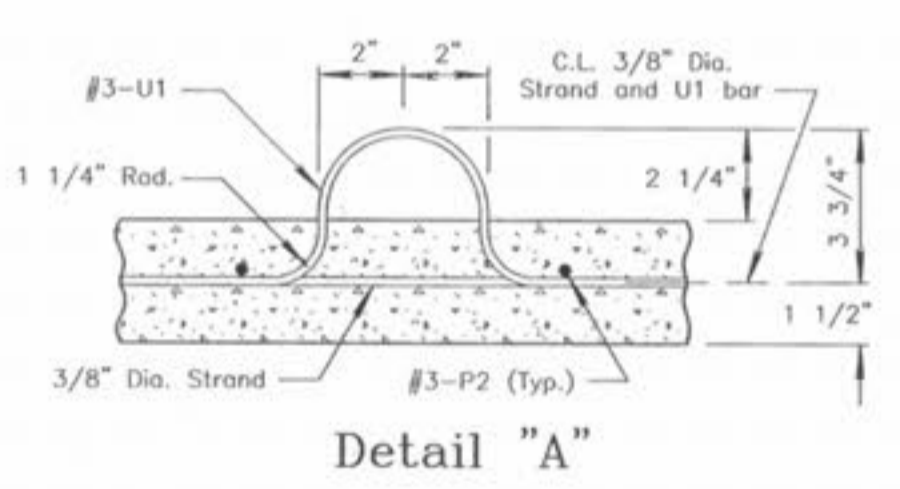
REINFORCING STEEL:

All dimensions are out to out.
Minimum clearance to reinforcing steel shall be $1 1/2$ ", unless otherwise shown.
Hooks and bends shall be in accordance with the C.R.S.I. manual of standard practice for detailing reinforced concrete structures, stirrup and tie dimensions.
Actual lengths are measured along centerline of bar to the nearest inch.
If U1 bars interfere with placement of slab steel, U1 loops may be bent over, as necessary, to clear slab steel.
The prestressed panel quantities are not included in the table of estimated quantities for slab on concrete I-Girders.

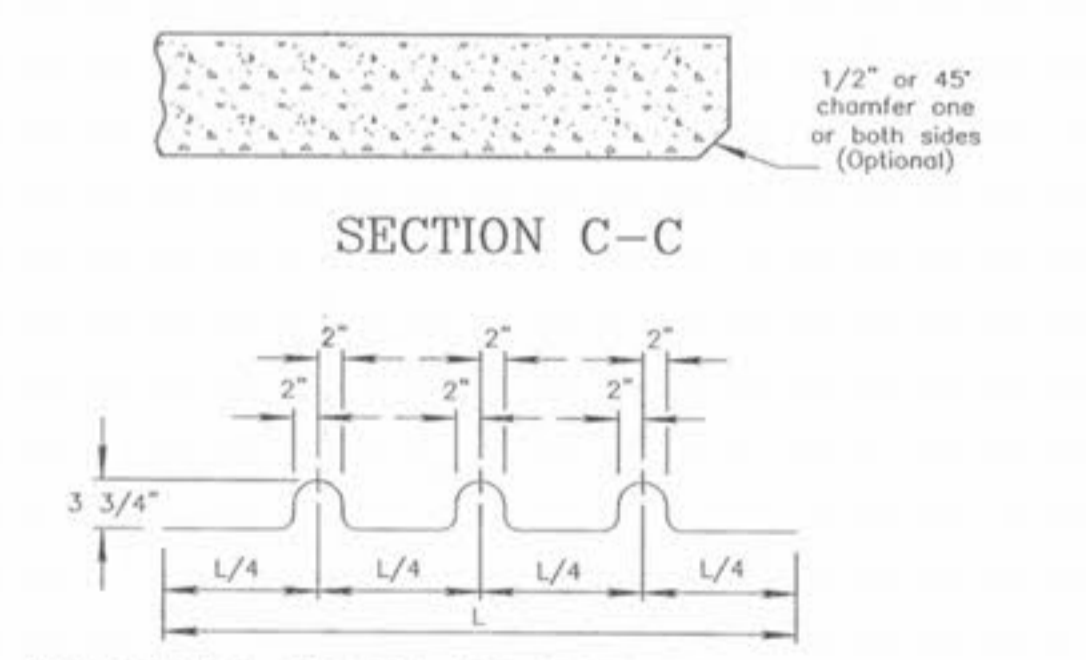
ENGINEER'S AUTHENTICATION: The responsibility for professional engineering liability on this project is hereby limited to the set of plans authenticated by the seal, signature and date hereto attached. Responsibility is disclaimed for all other engineering plans involved in this project and specifically excludes revisions after this date, unless reauthenticated.



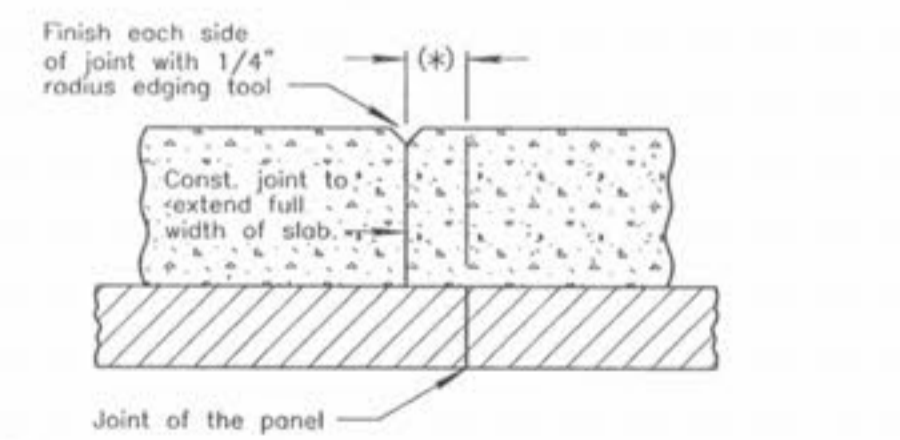
SECTION B-B



Detail "A"



SECTION C-C



PERMISSIBLE CONSTRUCTION JOINT

BENDING DIAGRAM FOR U1 BAR
(U1 bars may be oriented at right angles to the location and spacing shown. U1 bars shall be placed between P1 bars.)

(*) Adjust the permissible construction joint to a clearance of 6" minimum from the joints of the panels.

NOTE: This drawing is not to scale. Follow dimensions.

DETAILS OF PRECAST PRESTRESSED PANELS