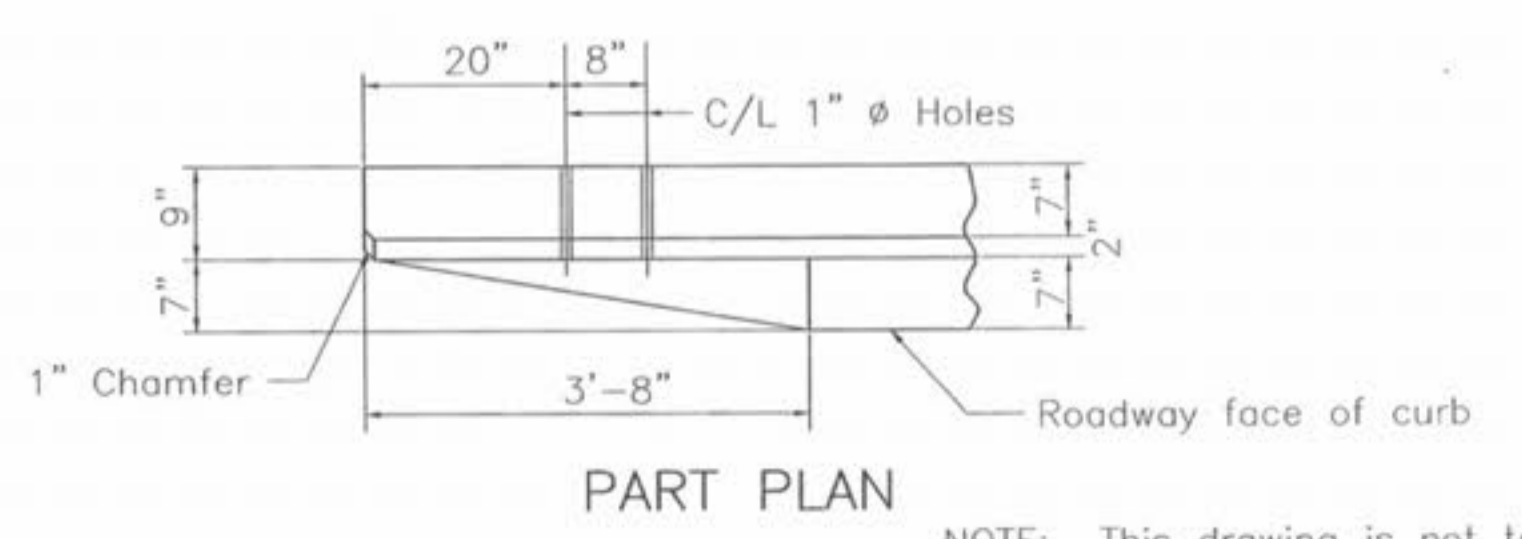
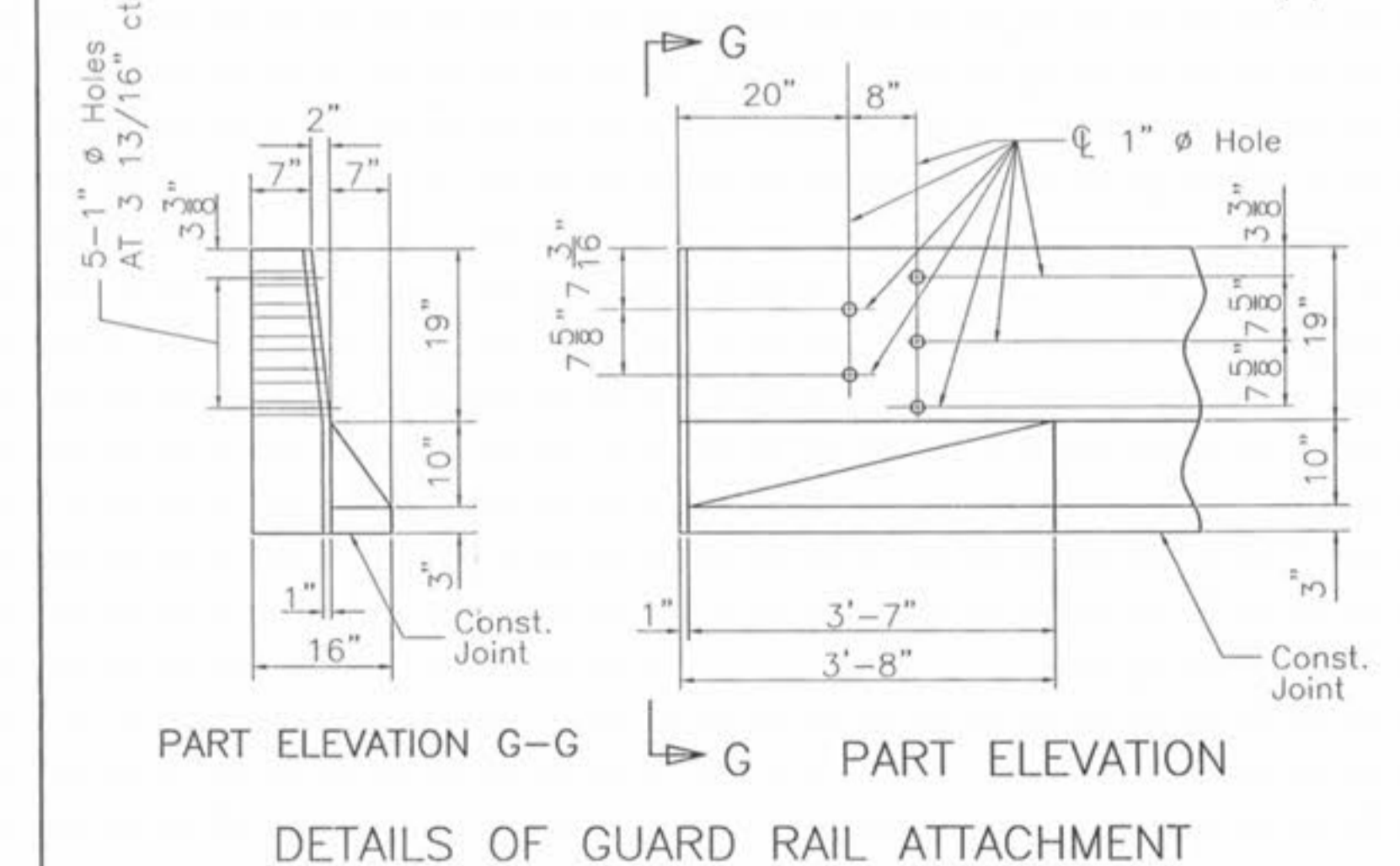
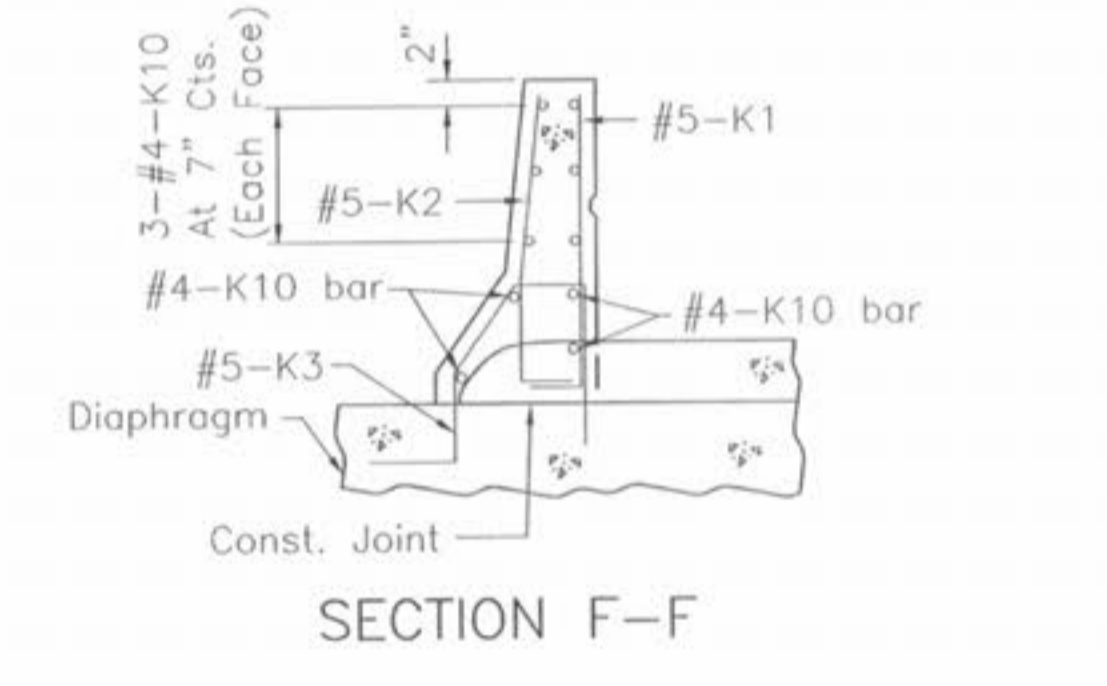
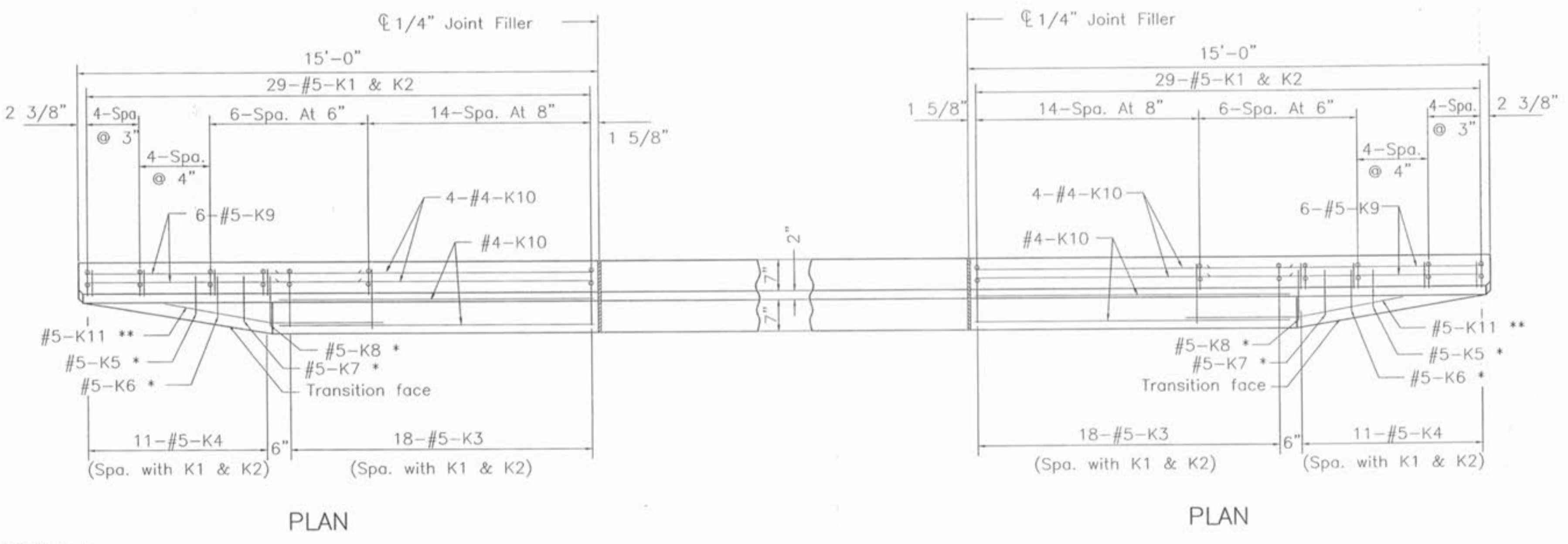
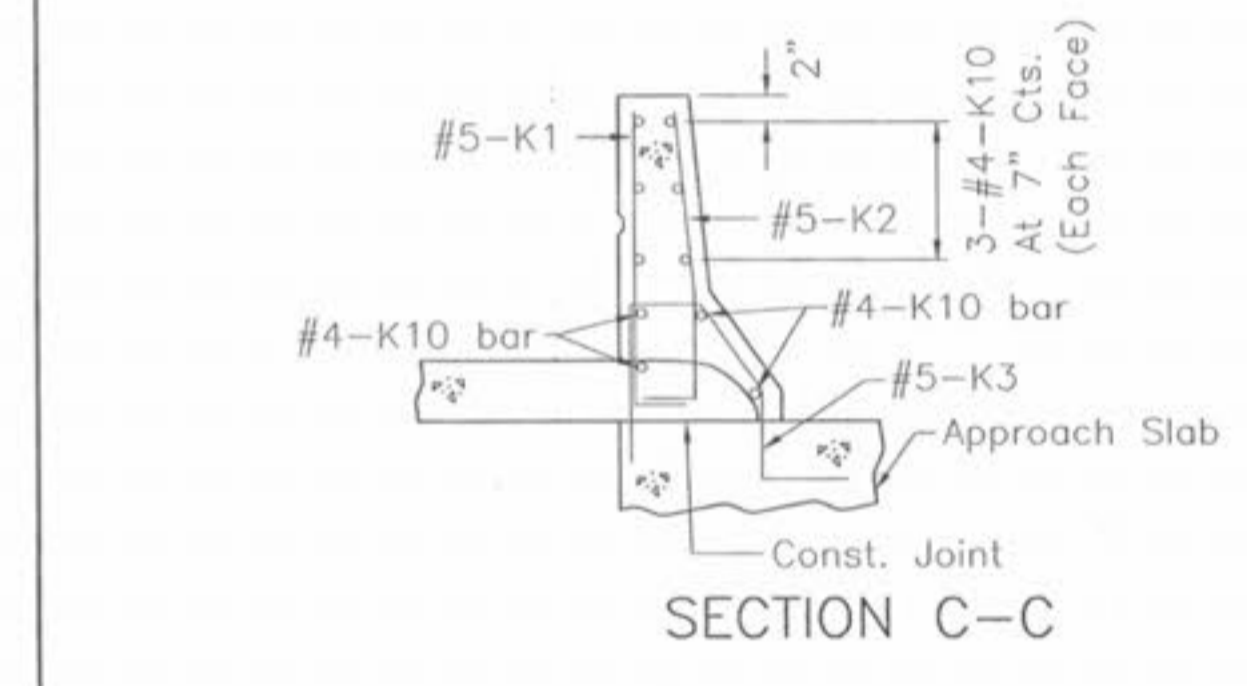


* Spaced with #5-K4 bars.
 ** Fit bar to follow transition face of curb.



NOTE: Use a minimum lap of 2'-0" between K9 and K10 bars.
DETAILS OF SAFETY BARRIER CURB AT END BENTS
 (Left barrier curb shown; right barrier curb similar)

ENGINEER'S AUTHENTICATION: The responsibility for professional engineering liability on this project is hereby limited to the set of plans authenticated by the seal, signature and date hereto attached. Responsibility is disclaimed for all other engineering plans involved in this project and specifically excludes revisions after this date, unless reauthenticated.



Shannon J. Hughes
 SHANNON J. HUGHES
 REGISTERED PROFESSIONAL ENGINEER
 NUMBER E-200016211
 10-28-2003

SAFETY BARRIER CURB

NOTE: This drawing is not to scale. Follow dimensions.