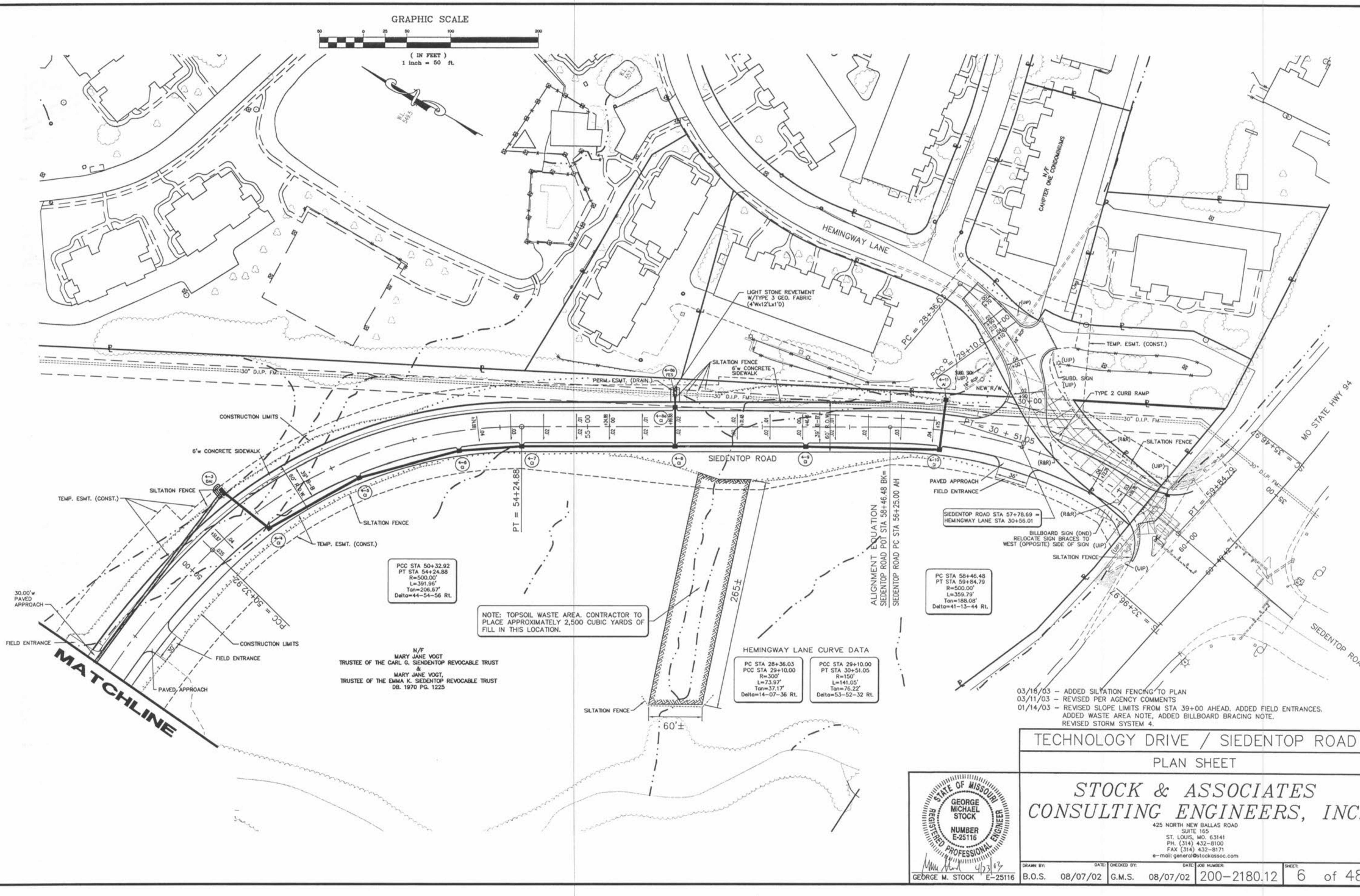


GRAPHIC SCALE



(IN FEET)
1 inch = 50 ft.



PCC STA 50+32.92
PT STA 54+24.88
R=500.00'
L=391.96'
Tan=206.57'
Delta=44-54-56 Rt.

NOTE: TOPSOIL WASTE AREA. CONTRACTOR TO PLACE APPROXIMATELY 2,500 CUBIC YARDS OF FILL IN THIS LOCATION.

HEMINGWAY LANE CURVE DATA
PC STA 28+36.03 PCC STA 29+10.00
R=300' L=73.97' Tan=32.17' Delta=14-07-36 Rt.
PT STA 29+10.00 PT STA 30+51.05
R=150' L=141.05' Tan=76.22' Delta=53-52-32 Rt.

PC STA 58+46.48
PT STA 59+84.79
R=500.00'
L=359.79'
Tan=188.08'
Delta=41-13-44 Rt.

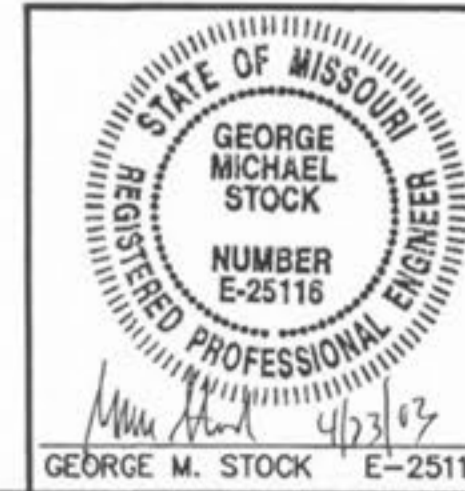
- 03/16/03 - ADDED SILTATION FENCING TO PLAN
- 03/11/03 - REVISED PER AGENCY COMMENTS
- 01/14/03 - REVISED SLOPE LIMITS FROM STA 39+00 AHEAD. ADDED FIELD ENTRANCES. ADDED WASTE AREA NOTE, ADDED BILLBOARD BRACING NOTE, REVISED STORM SYSTEM 4.

N/F
MARY JANE VOGT
TRUSTEE OF THE CARL G. SIEDENTOP REVOCABLE TRUST &
MARY JANE VOGT,
TRUSTEE OF THE EMMA K. SIEDENTOP REVOCABLE TRUST
DB. 1970 PG. 1225

TECHNOLOGY DRIVE / SIEDENTOP ROAD
PLAN SHEET

STOCK & ASSOCIATES
CONSULTING ENGINEERS, INC.

425 NORTH NEW BALLAS ROAD
SUITE 165
ST. LOUIS, MO. 63141
PH. (314) 432-8100
FAX (314) 432-8171
e-mail: general@stockassoc.com



DRAWN BY:	DATE:	CHECKED BY:	DATE:	JOB NUMBER:	SHEET:
B.O.S.	08/07/02	G.M.S.	08/07/02	200-2180.12	6 of 48

P:\DRM\YK\URM\2100\2002180_12\030503\105.dwg Mod Apr 23 16:37:30 2003