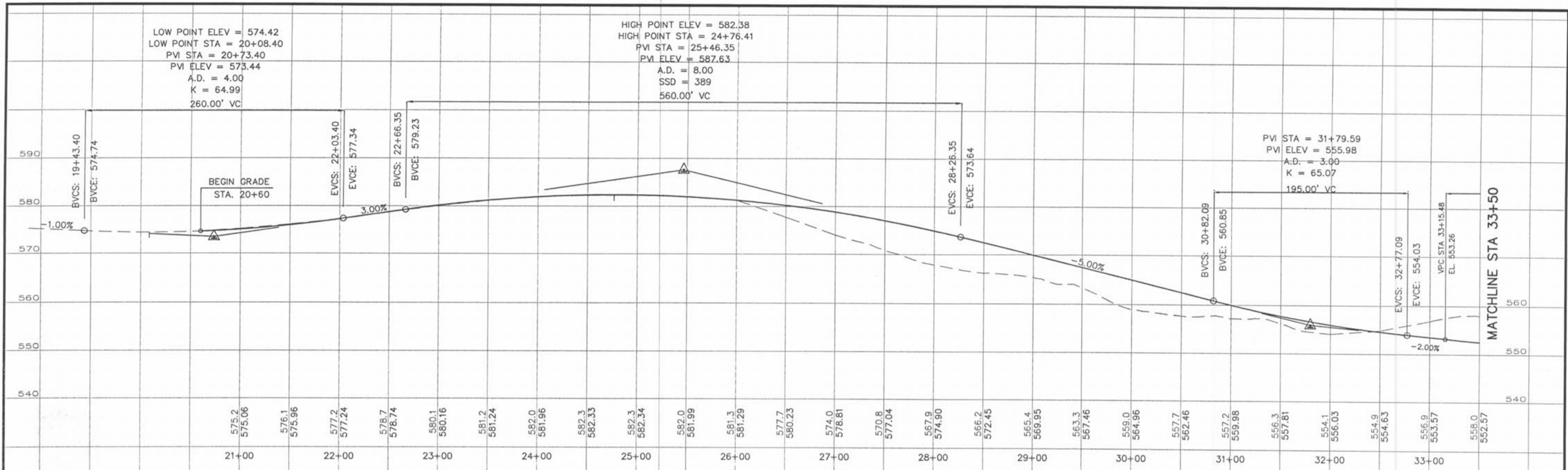


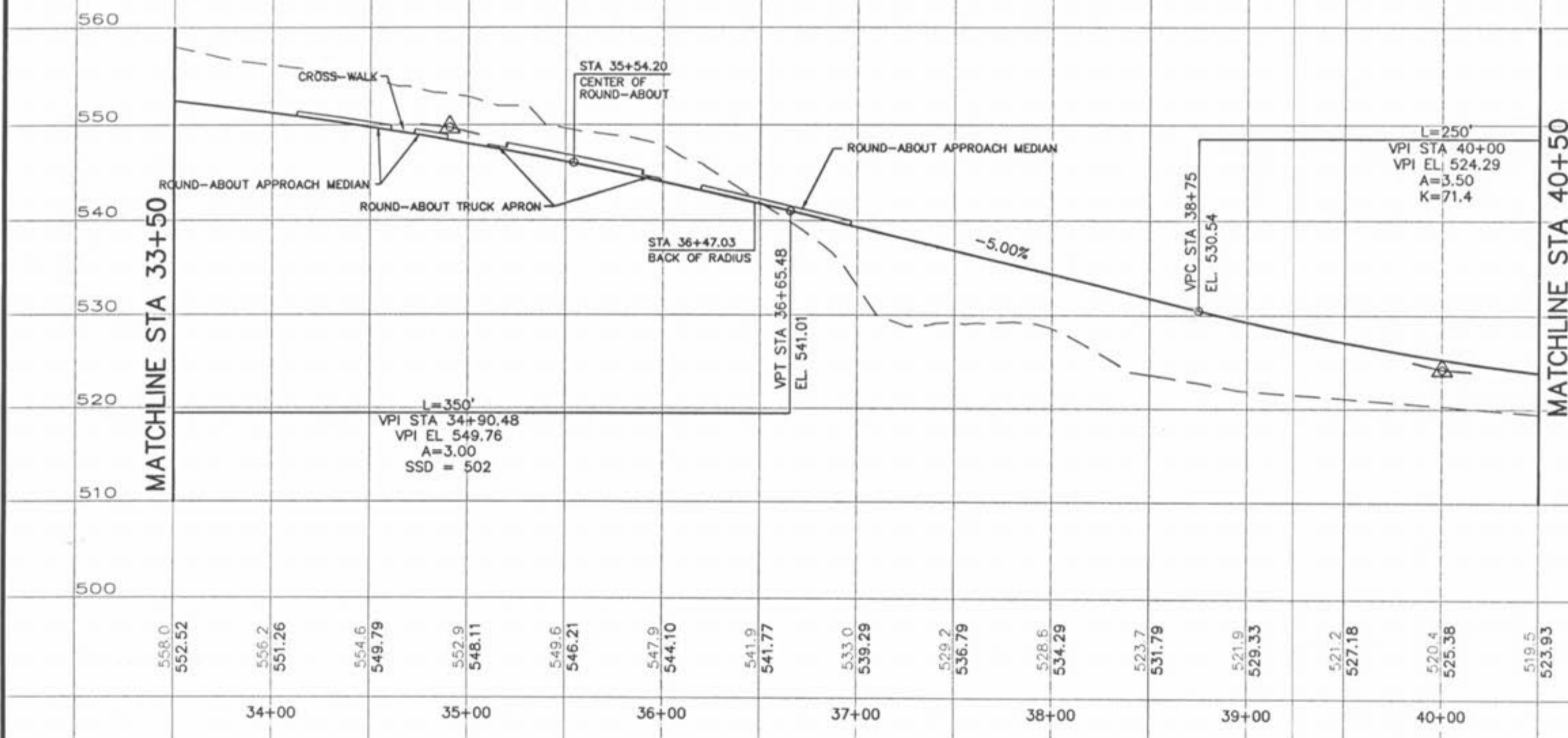
LOW POINT ELEV = 574.42  
 LOW POINT STA = 20+08.40  
 PVI STA = 20+73.40  
 PVI ELEV = 573.44  
 A.D. = 4.00  
 K = 64.99  
 260.00' VC

HIGH POINT ELEV = 582.38  
 HIGH POINT STA = 24+76.41  
 PVI STA = 25+46.35  
 PVI ELEV = 582.63  
 A.D. = 8.00  
 SSD = 389  
 560.00' VC

PVI STA = 31+79.59  
 PVI ELEV = 555.98  
 A.D. = 3.00  
 K = 65.07  
 195.00' VC



**TECHNOLOGY DRIVE**



**TECHNOLOGY DRIVE / SIEDENTOP ROAD**

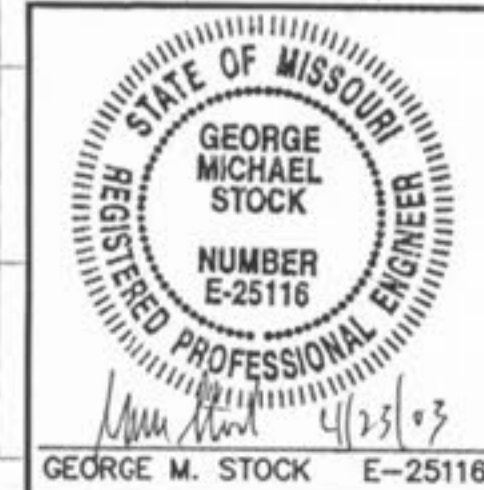
**ROADWAY PROFILES**  
 HORIZONTAL SCALE: 1"=50'  
 VERTICAL SCALE: 1"=10'

03/11/03 - REVISED PER AGENCY COMMENTS

**TECHNOLOGY DRIVE / SIEDENTOP ROAD  
 PROFILE SHEET**

**STOCK & ASSOCIATES  
 CONSULTING ENGINEERS, INC.**

425 NORTH NEW BALLAS ROAD  
 SUITE 165  
 ST. LOUIS, MO. 63141  
 PH. (314) 432-8100  
 FAX (314) 432-8171  
 e-mail: general@stockassoc.com



DATE: 08/07/02	CHECKED BY: G.M.S.	DATE: 08/07/02	JOB NUMBER: 200-2180.12	SHEET: 9 of 48
----------------	--------------------	----------------	-------------------------	----------------