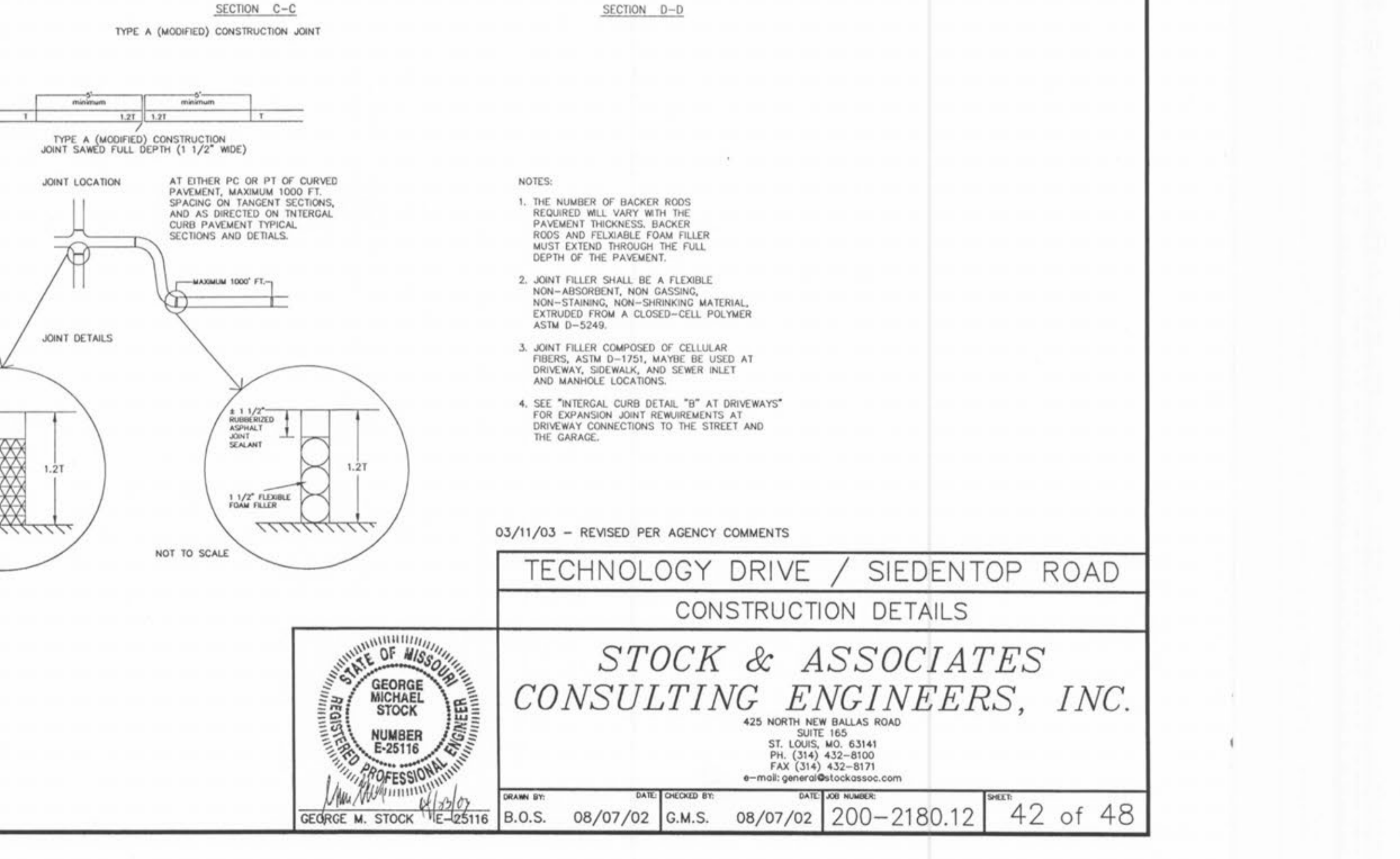
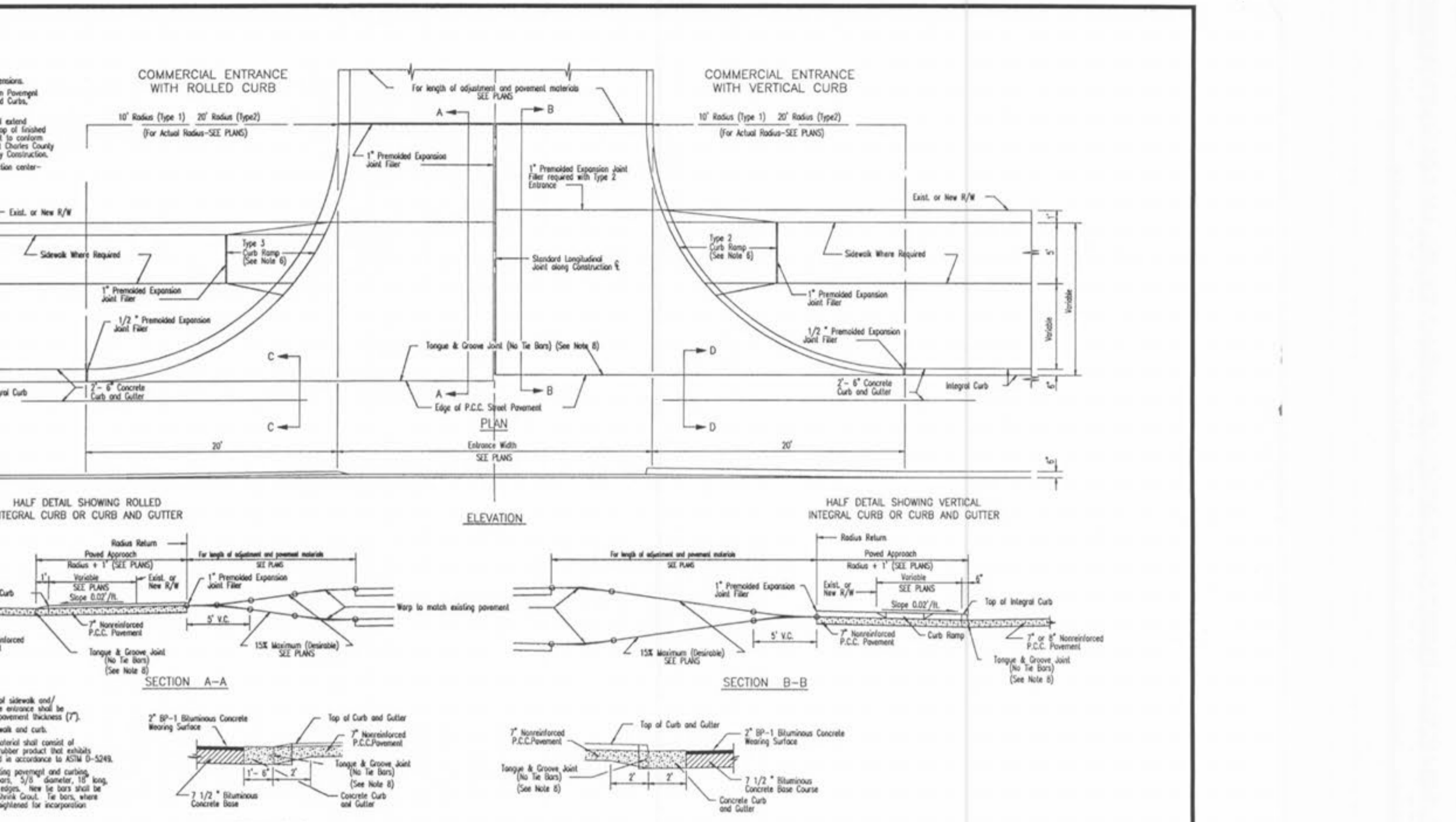


GENERAL NOTES

- Do not scale drawing. Follow dimensions.
- Construction joint and tie bars may be omitted when curb is poured integral with pavement.
- Minimum thickness for Pavement is:
 - Blumiseum Concrete Pavement Thickness = 11"
 - All Residential Minor and Local Streets = 8"
 - Residential Collector and Non-Residential Streets = 7"
 - All Arterial Streets = 8"
- Type "C" Transverse Joint is required for Arterial and Non-Residential streets. Use Type "C" Transverse Joint for all others.
- For Subdivision or other Streets having 8" concrete pavement, 1/2" ϕ deformed tie bars, 30" long at 30" centers shall be used for Type "B" longitudinal joints and 1/2" ϕ deformed tie bars 18" long at 30" centers shall be used for Type "A" longitudinal joints.
- Refer to Pavement Construction Details for Integral Vertical Curb and Concrete Pavement Typical Sections and Details. See DWG. CS02.011 and Integral Rolled Curb and Concrete Pavement Typical Sections and Details. See DWG. CS02.022 for joint and bar requirements for different street classifications. Note that width and location of each jointed portion of the pavement may change the type and location of joint required.
- All deformed bars for joints and curbs shall be:
 - Steel: Steel bars conforming to ASTM A615-75, Grade 60.
 - Length of tie bars shall equal the thickness of pavement plus the height of curb less 3". Tie bars shall be placed at 24" centers.
 - Transverse or longitudinal construction joints in slip formed pavements may be made with a groove or lock, such device has been approved in advance by the Department.
 - The free end of the dowel bar for a length of at least 11 inches shall be coated with an approved graphite grease.
 - All dowel bars 1 1/2" ϕ or 1 1/4" ϕ shall be epoxy coated.

GENERAL NOTES

- Do not scale drawing. Follow dimensions.
- All steel tie bars shall be separated from the pavement and curb by expansion joint material extending company through curb and slab. Monitor coatings within the pavement limits shall be based as shown.
- When a joint falls within 5ft. of, or contacts inlets, manholes, or other structures, various one or more joints either side of opening to permit joint to fall on round structures and all or different corners of rectangular structures.
- Driveway configurations are shown in the "Entrance Construction Details".
- Construction joint and tie bars may be omitted when curb is poured monolithic with pavement.
- Minimum thickness for Pavement is:
 - All Residential Minor and Local Streets = 7"
 - All Non-Residential Streets = 8"



GENERAL NOTES

- Do not scale drawing. Follow dimensions.
- Refer to Pavement Construction Details, Joints and Curbs for joint and bar requirements. Note that width and location of each jointed portion of the pavement may change the type and location of joints required. See DWG. CS02.011.
- Transverse or longitudinal construction joints in slip formed pavements may be made with a groove or lock, if such device has been approved in advance by the Department.
- The locations of the Type B and Type F longitudinal construction joints in the sections may be interchanged for different widths of construction if approved by the Department.
- All 1 1/2" ϕ smooth dowel bars 18" ϕ 12" cts. shall be epoxy coated.

NOTE

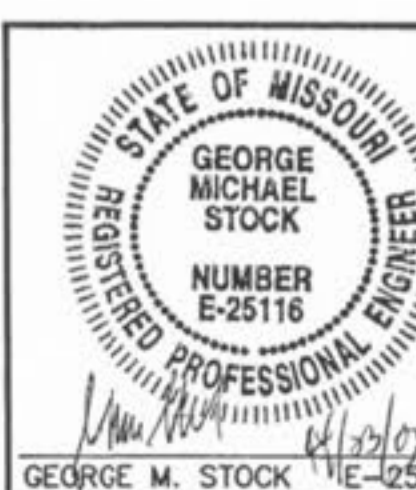
Joint filler material shall meet ASTM designations as follows:

- Blumiseum type ASTM D-994-53
- Non extruding & resilient bituminous type (blue) ASTM D-1751-02F
- Non extruding & resilient non bituminous type (purple) ASTM D-5249

Joint sealant material shall meet ASTM and MSHTD designations as follows:

- ASTM D-3405 MSHTD M-301 or
- ASTM D-1190-74 MSHTD M-173-81
- or latest revisions thereof.

STREET	JOINT TYPE	JOINT AND BAR REQUIREMENTS	
		JOINT	BAR REQUIREMENTS
All Arterial, Non-Residential	Transverse	Type C	1" ϕ smooth dowel bars 18" ϕ 12" cts.
26'-51' wide pavement	Longitudinal	With a jointed section	A tie bar between tie bars placed section.
		Type F	1/2" ϕ deformed tie bars 18" ϕ 30" cts. 1/2" ϕ deformed tie bars 30" ϕ 30" cts.
All Non-Residential Streets	Expansion	Type A	3/4" ϕ smooth dowel bars 18" ϕ 12" cts.



03/11/03 - REVISED PER AGENCY COMMENTS

TECHNOLOGY DRIVE / SIEDENTOP ROAD
CONSTRUCTION DETAILS

STOCK & ASSOCIATES CONSULTING ENGINEERS, INC.

425 NORTH NEW BALLAS ROAD
SUITE 165
ST. LOUIS, MO. 63141
PH. (314) 432-8100
FAX (314) 432-8171
e-mail: general@stockassoc.com

DRAWN BY: B.O.S. DATE: 08/07/02
CHECKED BY: G.M.S. DATE: 08/07/02
JOB NUMBER: 200-2180.12
SHEET: 42 of 48