

**NORFOLK AND SOUTHERN RAILROAD**

N82°53'40"E 186.00'

( BASIS OF BEARINGS )

"RESUBDIVISION OF LOTS 11 & 12 OF NORTH CENTRAL INDUSTRIAL PARK" P.B. 30 PG.74

11A

PROPERTY N/F JAMES M. WARRINER AND IRMA J. WARRINER 2025/2038

AREA 2.031 ACRES

EXISTING BRICK AND METAL BUILDING

10B "RESUBDIVISION OF LOT 10 OF NORTH CENTRAL INDUSTRIAL PARK" P.B. 31 PG.94

PROPERTY N/F TEN SUI PROPERTIES, L.P. 2540/915

"RESUBDIVISION OF LOTS 11 & 12 OF NORTH CENTRAL INDUSTRIAL PARK" P.B. 30 PG.74

11B

PROPERTY N/F CHRISTOPHER MILLER AND VIVIAN B. MILLER 3149/43

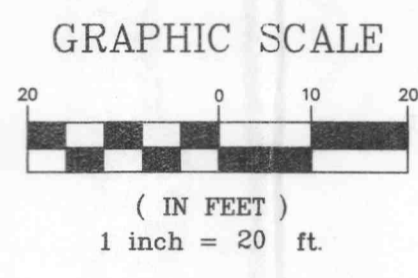
"NORTH CENTRAL INDUSTRIAL PARK" P.B. 28 PG.15

COMMON GROUND



PROPERTY N/F TRUSTEES OF NORTH CENTRAL INDUSTRIAL PARK 2347/930

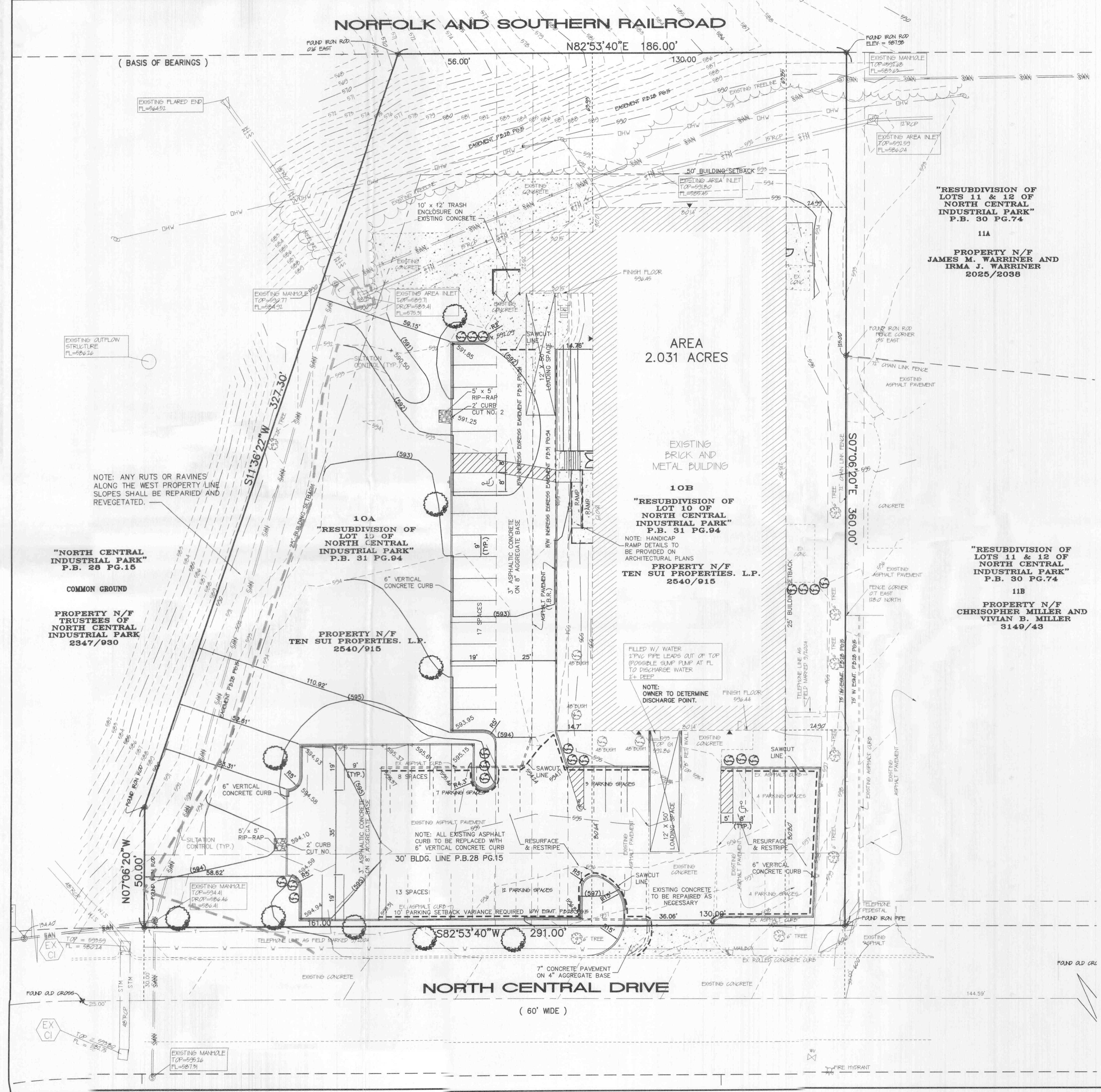
10A "RESUBDIVISION OF LOT 10 OF NORTH CENTRAL INDUSTRIAL PARK" P.B. 31 PG.94

PROPERTY N/F TEN SUI PROPERTIES, L.P. 2540/915



**LANDSCAPE LEGEND**

-  QTY. 9 INDICATES PROPOSED HARDWOOD TREE MINIMUM 2" CALIPHER (ashes, oaks, maples, birches, sweet gum)
  -  QTY. 19 INDICATES PROPOSED EVERGREEN SHRUB (mugo pines, yews, junipers, hollies, boxwoods)
- LANDSCAPING AS SHOWN IS SUBJECT TO FINAL DESIGN BY A QUALIFIED LANDSCAPE DESIGNER



E:\DWG\A13000P\LUS\13035 NORTH CENTRAL LOT 10\Constr\action\13035Con.dwg, SiteGrading (2), 12/22/2004 1:01:19 PM, Station 38 ALJ