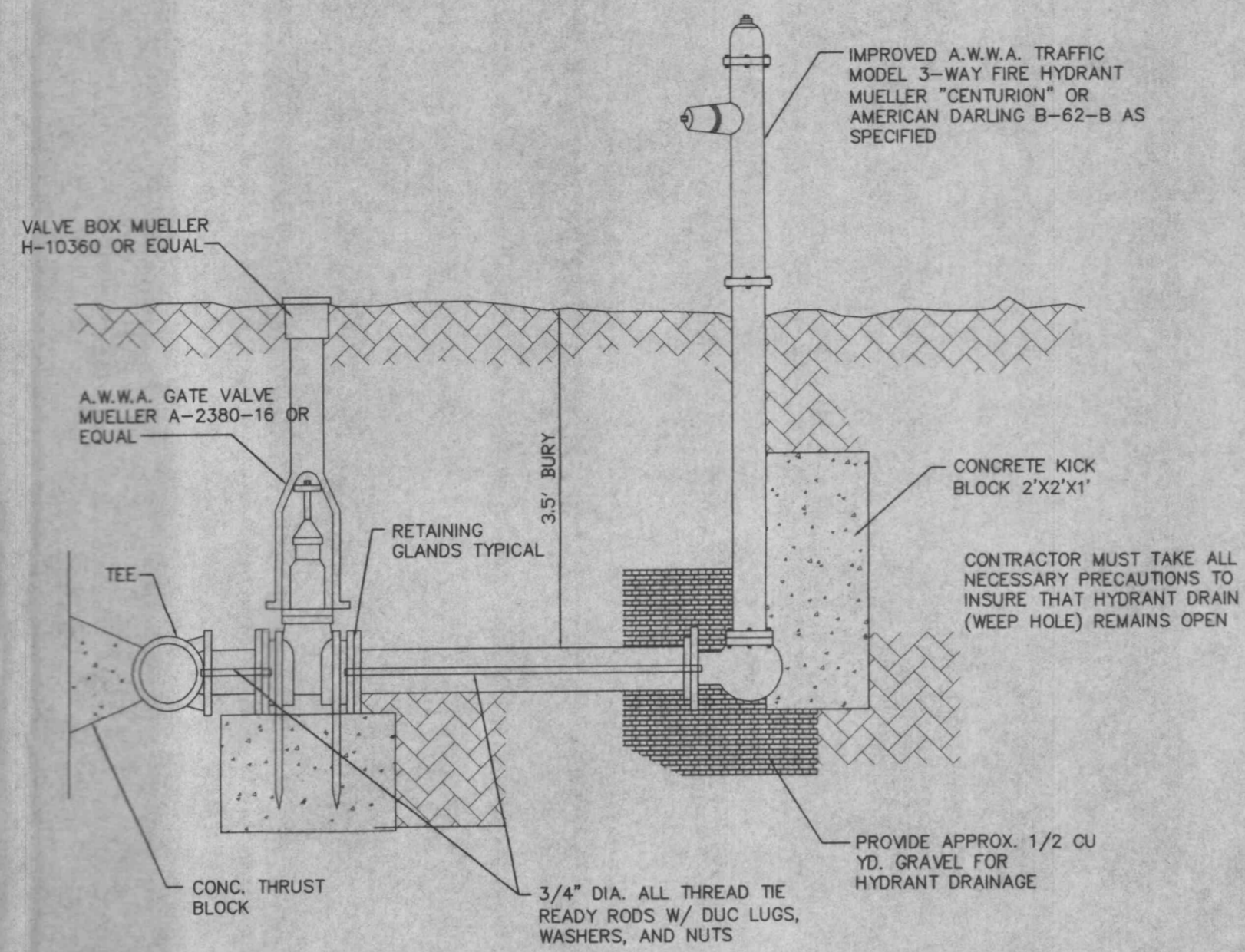
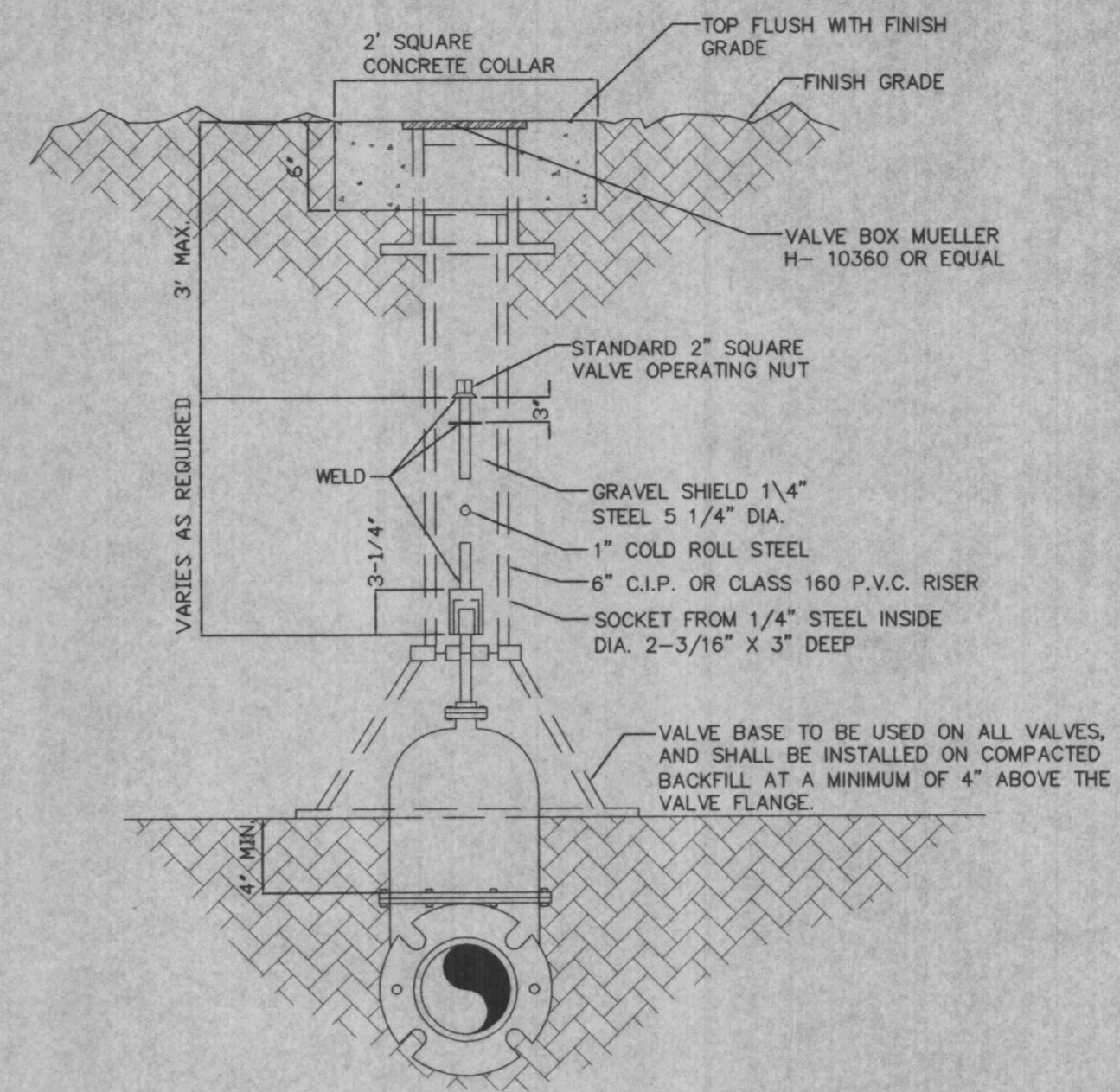


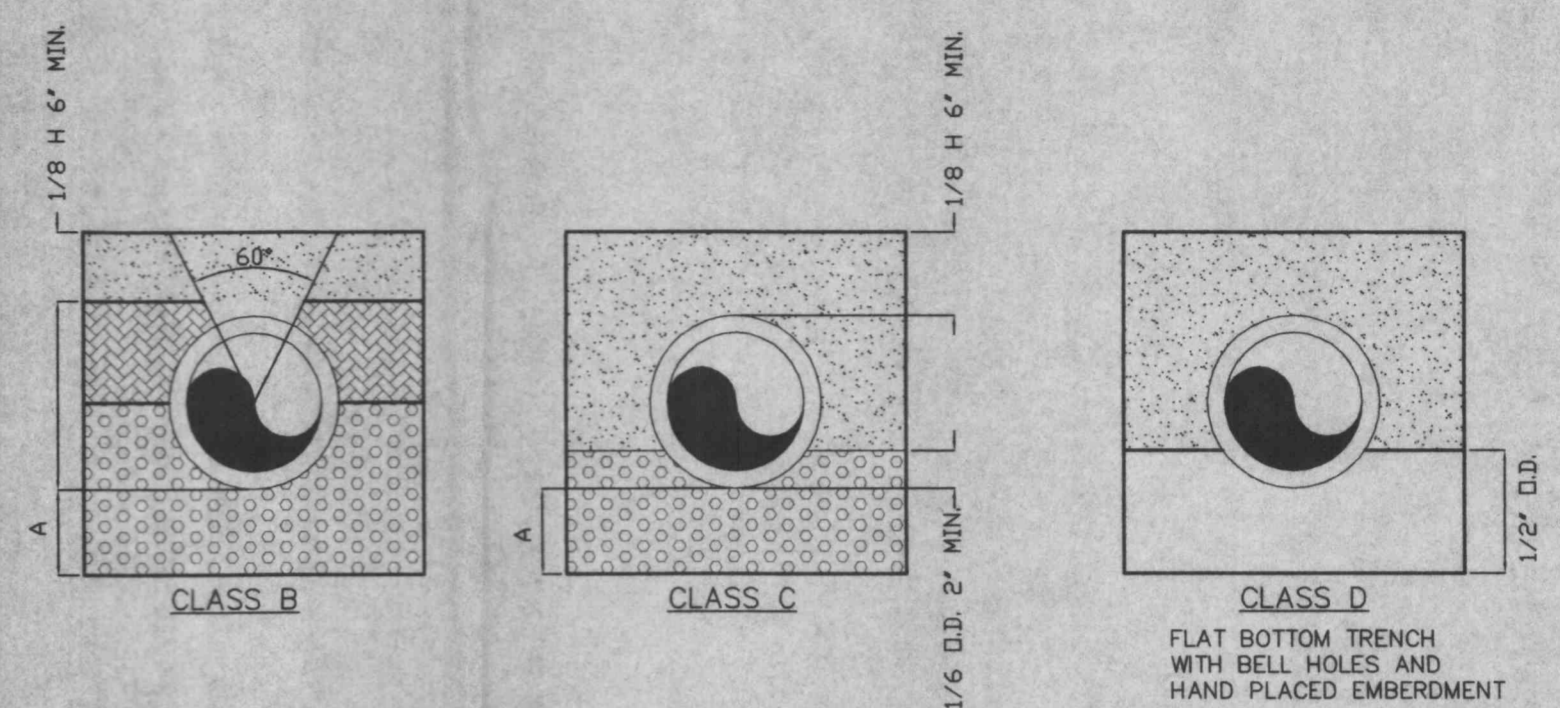
TYPICAL WATER MAIN INSTALLATION DETAILS
SCALE: NTS



FIRE HYDRANT INSTALLATION DETAIL
SCALE: NTS



WATER VALVE DETAIL
SCALE: NTS



GRANULAR BEDDING SHALL BE CRUSHED ROCK OR PEA GRAVEL WITH LESS THAN 95% PASSING 1/2" (95% PASSING 3/4" FOR 30" AND LARGER PIPE) AND NOT LESS THAN 95% RETAINED ON A #4; TO BE PLACED IN NOT MORE THAN 6" LAYERS AND COMPACTED BY SLICING WITH A SHOVEL OR VIBRATING.

COMPACTED BACKFILL SHALL BE FINELY DIVIDED JOB EXCAVATED MATERIAL FREE FROM DEBRIS, ORGANIC MATERIAL AND STONES, PLACED IN UNIFORM LAYERS NOT MORE THAN 6" THICK, COMPACTED TO 95% MAXIMUM DENSITY AS DETERMINED BY A.S.T. D698, OR GRADED AGGREGATE GRANULAR BACKFILL MATERIAL MAY BE SUBSTITUTED FOR ALL OR PART OF COMPACTED BACKFILL.

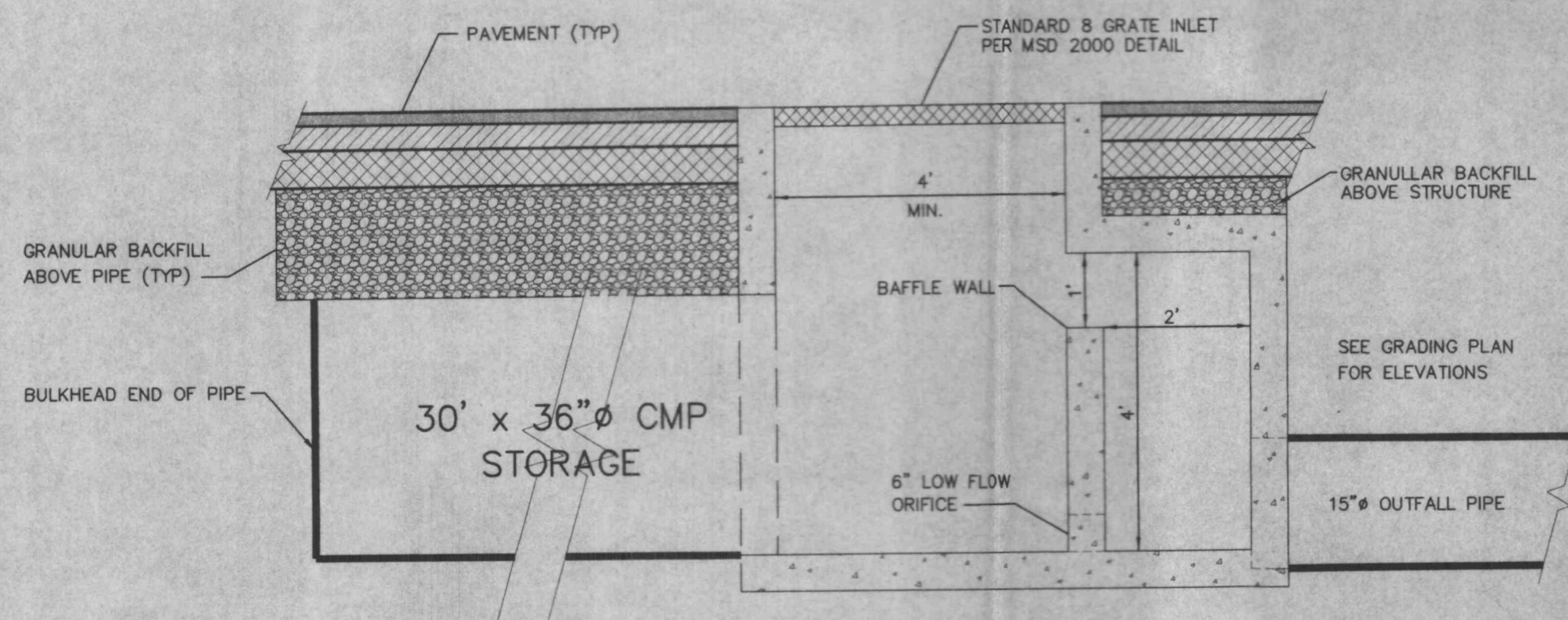
TAMPED BACKFILL SHALL BE FINELY DIVIDED JOB EXCAVATED MATERIAL FREE FROM DEBRIS, ORGANIC MATERIAL AND STONES, HAND PLACED IN UNIFORM LAYERS NOT MORE THAN 8" THICK AND TAMPED AROUND CONDUIT PIPE. GRANULAR BACKFILL MATERIAL MAY BE SUBSTITUTED FOR ALL OR PART OF TAMPED BACKFILL.

TRENCH BACKFILL SHALL BE AS REQUIRED IN THE "LAYING AND BACKFILL" SECTION OF THE DETAILED SPECIFICATIONS.

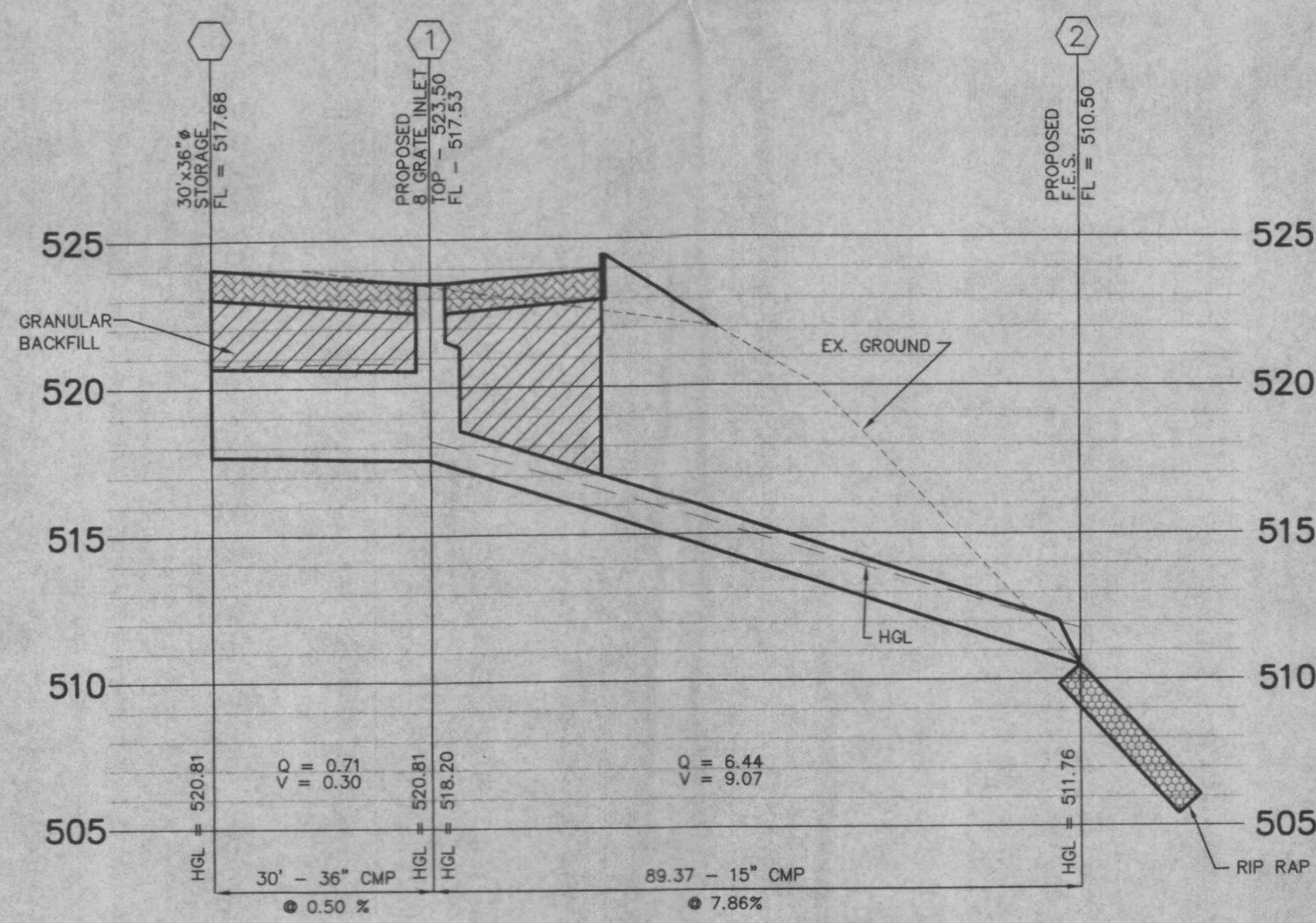
EMBEDMENT THE TYPE OF EMBEDMENT TO BE USED SHALL BE AS SPECIFIED IN THE PLANS AND SPECIFICATIONS.

TRACER WIRE REQUIRED ON ALL WATER MAINS.

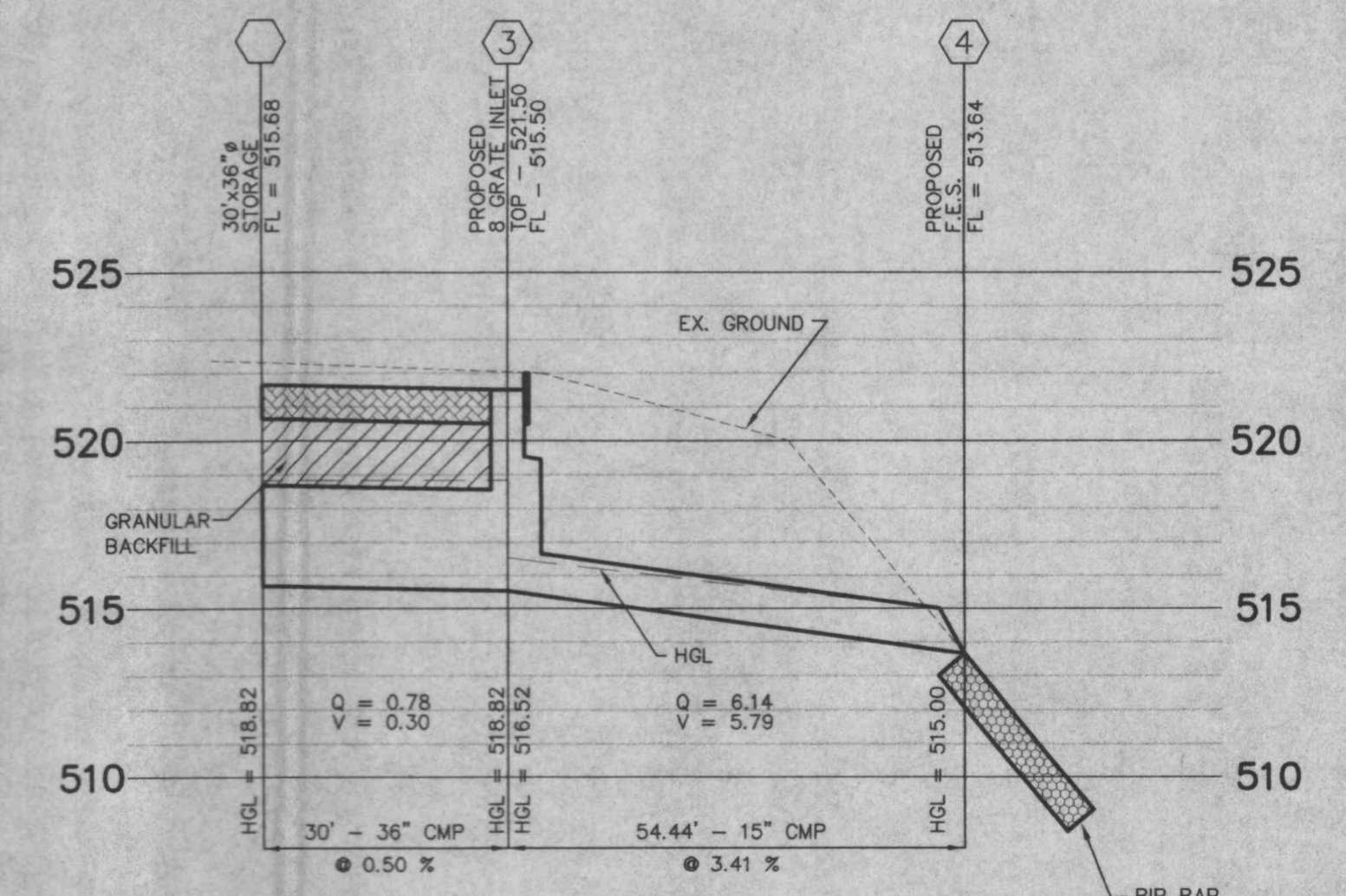
WATER MAIN EMBEDMENT
SCALE: NTS



CONTROL STRUCTURE (2 LOCATIONS)
STRUCTURE NO. 1 AND 3



SCALE
1" = 20' HORIZ.
1" = 5' VERT.



James B. Becker
Professional Engineer
11-20-00

DETAIL AND PROFILE SHEET

Revisions

Date 11-29-2000

Developer TEXAS ROAD HOUSE RESTAURANT 727 CENTRAL AVENUE LEXINGTON, KENTUCKY 40502 PH. (859) 288-2100 FAX (859) 335-1815

Consulting Engineers James B. Becker CONSULTING ENGINEERS PHONE (314) 638-8992 FAX (314) 638-8997 ST. LOUIS, MISSOURI 63123

Project TEXAS ROAD HOUSE ST. CHARLES COUNTY, MISSOURI

Drawn By TMM

Checked By MLO

Scale 1" = 20'

Job Number 4865

Sheet Number D2

ISSUE DATE: 11-29-2000