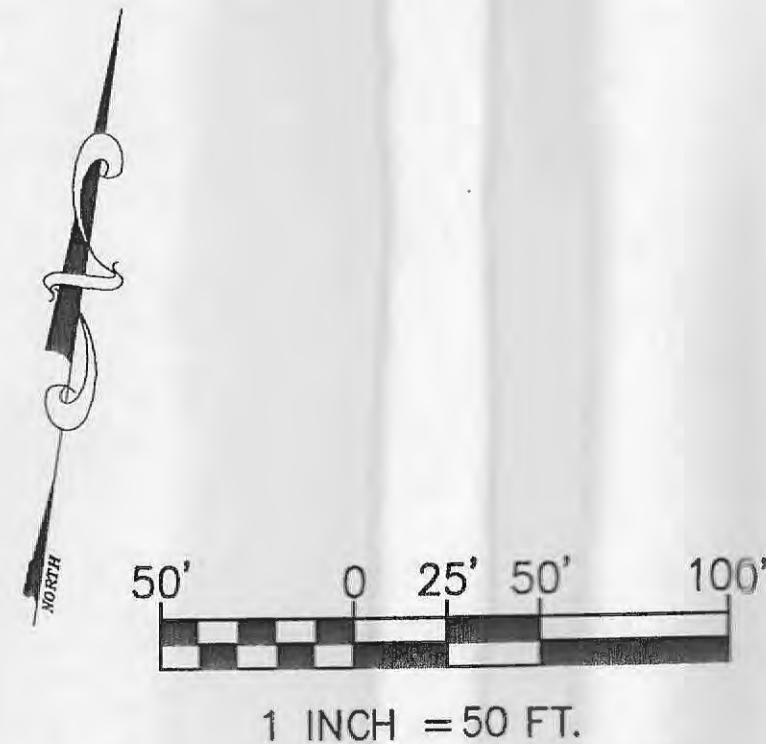
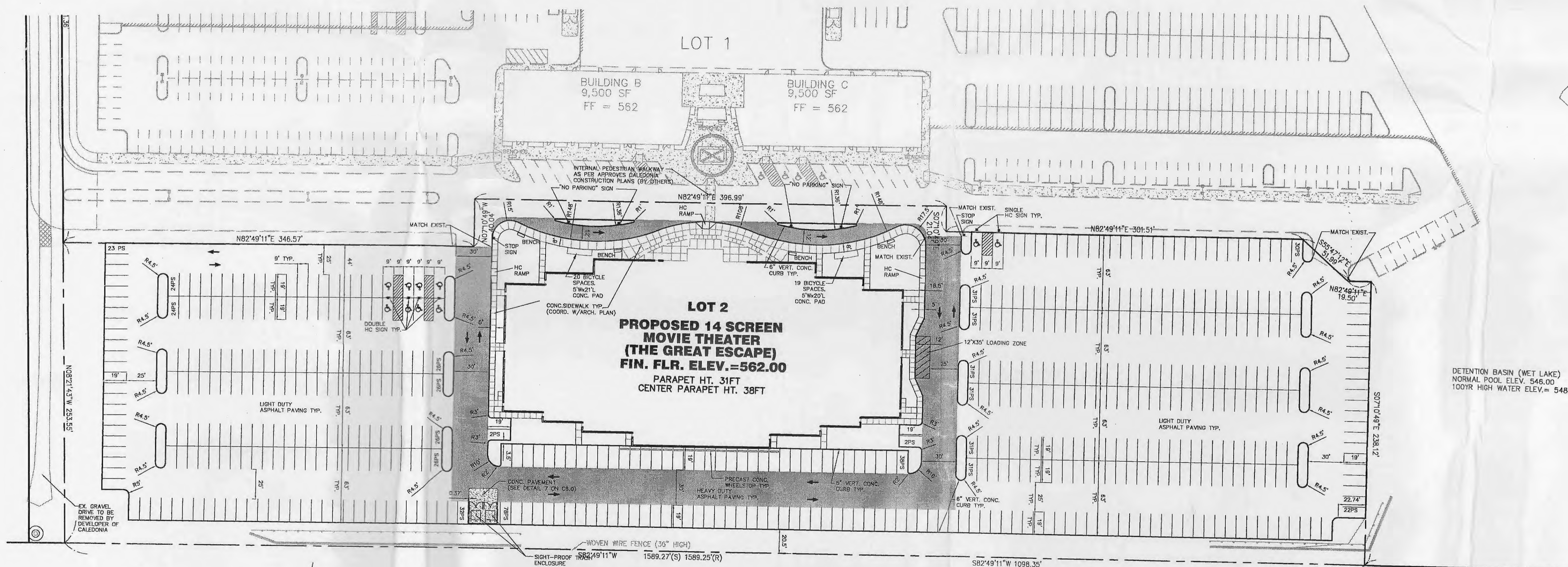
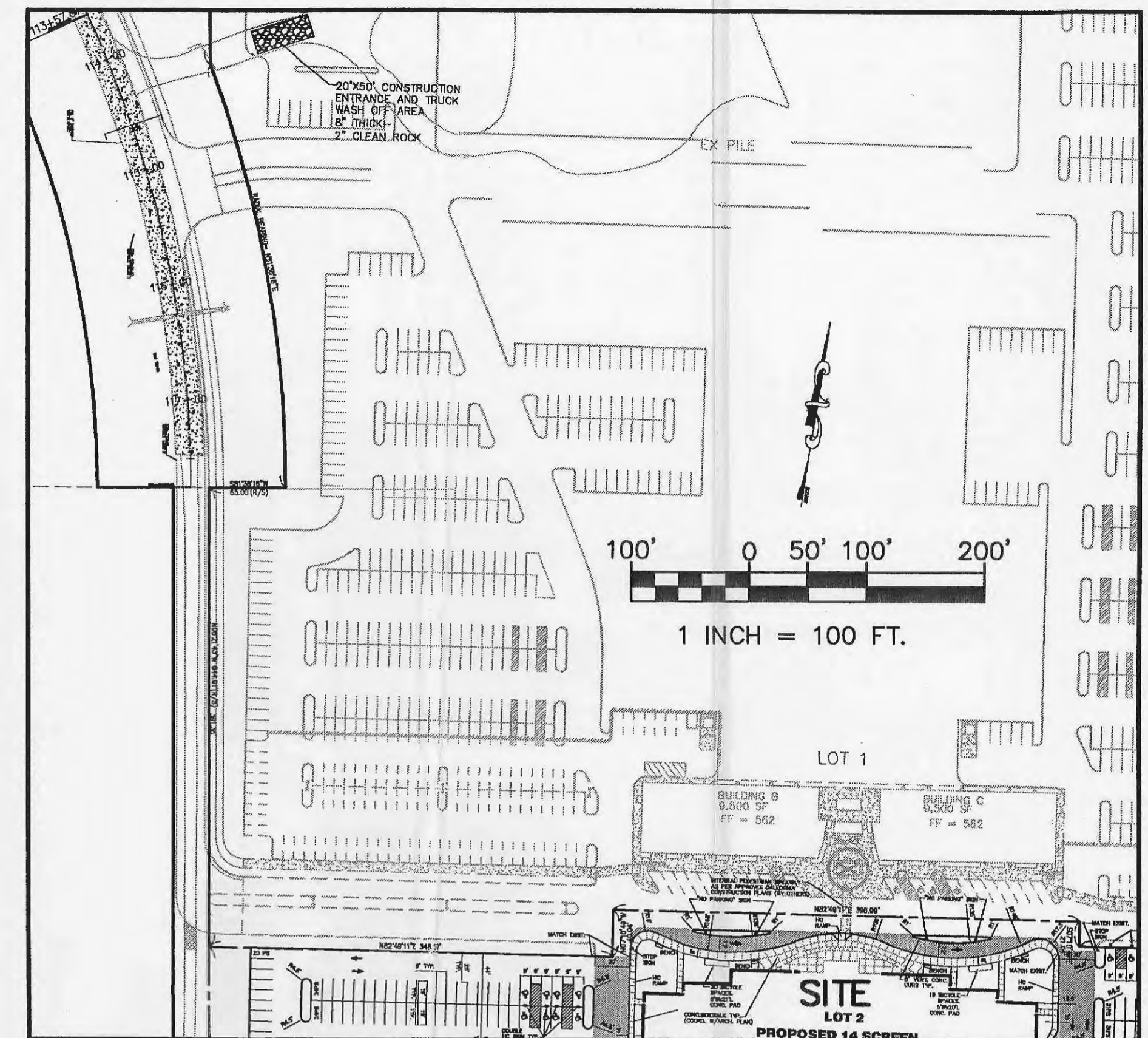


DATE: Apr 20, 2008 - 04:43PM
DRAWING: C:\Users\jacob2008\Documents\05-017\UD5_05-017\UD5_05-017.dwg; c:\p08-c3-sitelan.dwg



AUGUST A. BUSCH
WILDLIFE AREA



- NOTES**
- 1) LIGHT POLE LOCATIONS TO BE VERIFIED WITH FINAL LIGHTING PLAN, BY OTHERS, PRIOR TO INSTALLATION.
 - 2) LIGHTING PLAN REQUIRES CITY APPROVAL.
 - 3) CONTRACTOR TO COORDINATE WITH ARCHITECTURAL PLANS FOR BUILDING DIMENSIONS AND SIDEWALK LAYOUT ADJACENT TO BUILDING.

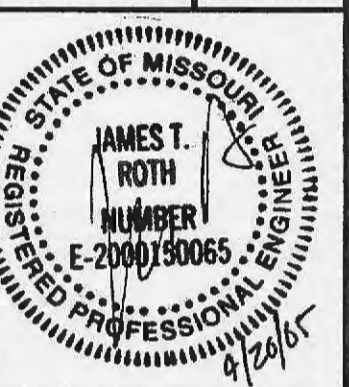
CALL 1-800-DIG-RITE (MISSOURI ONE CALL) TO HAVE LOCATIONS MARKED IN THE FIELD (SUBSCRIBING UTILITIES REQUIRE 48 HOURS NOTICE PRIOR TO CONSTRUCTION).
ALSO CALL MDDOT AT (314) 340-4100.



REVISIONS		
NO.	DATE	DESCRIPTION
1	3/25/05	CITY OF OFALON COMMENTS
2	3/20/05	
3	4/20/05	CALEDONIA COORDINATION OF UTILITIES

DEVELOPER/OWNER:
ALLIANCE ENTERTAINMENT COMPANY
300 PROFESSIONAL COURT
NEW ALBANY IN. 47105
(812) 945-4006

THE PROFESSIONAL ENGINEER'S SIGNATURE AND PERSONAL SEAL ARE REQUIRED. THE ENGINEER ASSUMES RESPONSIBILITY ONLY FOR WHAT APPEARS ON THIS PLAN, AND DISCLAIMS RESPONSIBILITY FOR ANY OTHER INFORMATION OR DATA NOT SHOWN OR REFERENCED HEREON. THIS PLAN IS A PRELIMINARY DESIGN AND IS NOT TO BE USED FOR CONSTRUCTION WITHOUT THE WRITTEN APPROVAL OF THE ENGINEER. ANY PART OR PARTS OF THIS PLAN WHICH ARE NOT SEALS OR INITIALS SHALL BE DEEMED TO BE UNDESIGNED PROFESSIONAL RELATING TO, OR IN TENDENCY TO BE USED FOR, ANY PART OR PARTS OF THE PROJECT TO WHICH THIS PLAN REFERS.



THE GREAT ESCAPE
HIGHWAY 40/61 AND WINGHAVEN
OFALON, MO 63366

SITE PLAN

planning • engineering • surveying • landscape architecture

Cole and Associates
INCORPORATED

10777 sunset office dr. suite 10
saint louis, missouri 63127
p. 314 984 9887 f. 314 984 0587

DESIGNED BY: JF
DRAWN BY: JF
CHECKED BY: JTR
DATE: 2/7/05

Job Number
05-017
Sheet Number
C3.0