

**EARTHWORK NOTES:**

NOTE: 15% SHRINKAGE FACTOR SHALL BE VERIFIED WITH GEOTECHNICAL CONSULTANT.  
 BULK CUT.....34,955.....+ CUBIC YARD  
 BULK FILL.....29,790 CY (w/15% SHRINKAGE).....+ CUBIC YARD  
 5,165 CY TO BE HAULED OFF-SITE

THE ENGINEER HAS CALCULATED THE ABOVE QUANTITIES OF EARTHWORK TO BE REGARDED AS AN ESTIMATE OF THE BULK MOVEMENT OR REDISTRIBUTION OF SOILS ON THIS PROJECT. AS AN ESTIMATE, THESE QUANTITIES ARE INTENDED FOR GENERAL USE, AND THE ENGINEER ASSUMES NO LIABILITY FOR COST OVERRUNS DUE TO EXCESS EXCAVATED MATERIALS OR SHORTAGES OF MATERIALS AND LABOR.

THE QUANTITIES ESTIMATED FOR EACH OF THE IMPROVEMENT ITEMS LISTED ABOVE ARE BASED UPON THE HORIZONTAL AND VERTICAL LOCATION OF THE IMPROVEMENTS AS PROPOSED ON THE SITE ENGINEERING PLANS PREPARED BY GRIMES CONSULTING.

ALL QUANTITIES SHALL BE VERIFIED BY THE CONTRACTOR. IT IS THE RESPONSIBILITY OF THE CONTRACTOR TO PROVIDE ALL LABOR AND EQUIPMENT NECESSARY TO MOVE REQUIRED QUANTITY OF MATERIALS TO COMPLETE THE PROJECT IN ACCORDANCE WITH THE PLANS AND SPECIFICATIONS.

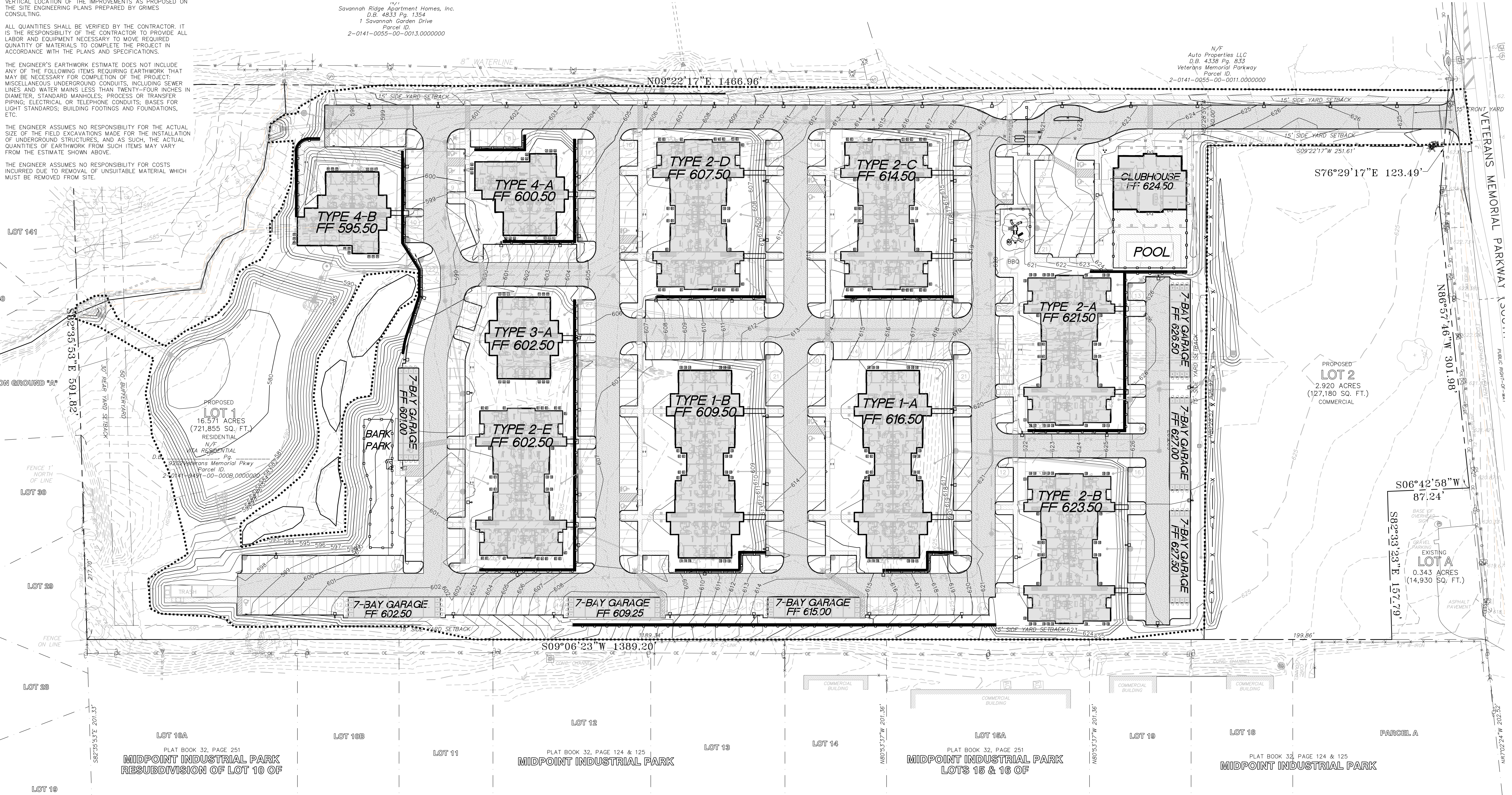
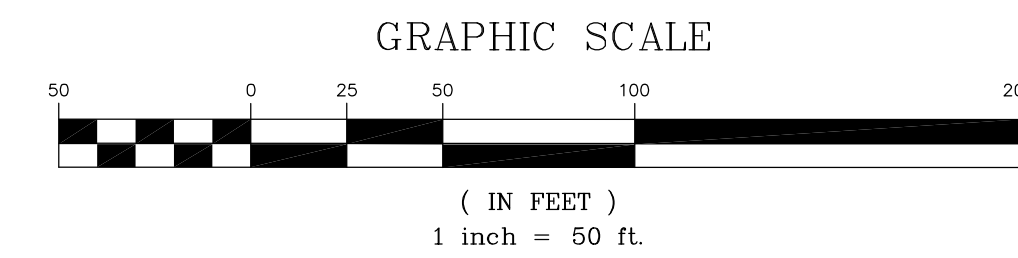
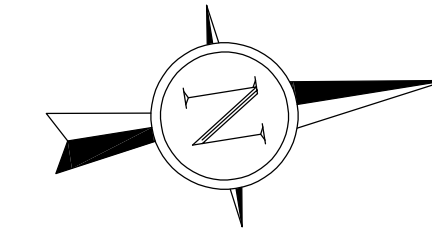
THE ENGINEER'S EARTHWORK ESTIMATE DOES NOT INCLUDE ANY OF THE FOLLOWING ITEMS REQUIRING EARTHWORK THAT MAY BE NECESSARY FOR COMPLETION OF THE PROJECT: MISCELLANEOUS UNDERGROUND CONDUITS, INCLUDING SEWER LINES AND WATER MAINS LESS THAN TWENTY-FOUR INCHES IN DIAMETER, STANDARD MANHOLES, PROCESS OR TRANSFER PIPING, ELECTRICAL OR TELEPHONE CONDUITS; BASES FOR LIGHT STANDARDS; BUILDING FOOTINGS AND FOUNDATIONS, ETC.

THE ENGINEER ASSUMES NO RESPONSIBILITY FOR THE ACTUAL SIZE OF THE FIELD EXCAVATIONS MADE FOR THE INSTALLATION OF UNDERGROUND STRUCTURES, AND AS SUCH, THE ACTUAL QUANTITIES OF EARTHWORK FOR SUCH ITEMS MAY VARY FROM THE ESTIMATE SHOWN ABOVE.

THE ENGINEER ASSUMES NO RESPONSIBILITY FOR COSTS INCURRED DUE TO REMOVAL OF UNSUITABLE MATERIAL WHICH MUST BE REMOVED FROM SITE.

SEE SHEET C10.0 FOR SWPPP PLAN  
 SEE SHEET C5.1 & C5.4 FOR ENLARGED GRADING PLAN  
 NO SLOPES TO EXCEED 3:1 MAX

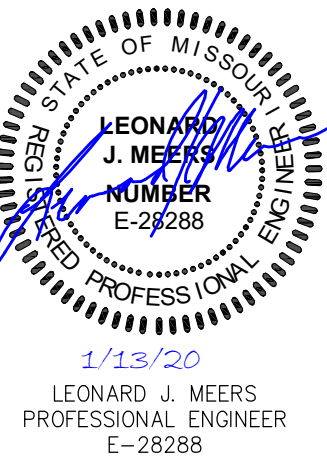
NOTE: CONTRACTOR TO PROVIDE FINAL WALL SEALED SHOP DRAWINGS, DETAILS, AND CALCULATION FOR APPROVAL



NO.	DESCRIPTION	DATE
1	REV 1	7-24-2019
2	REV 2	8-23-2019
3	REV 4	10-25-2019
4	REV 5	11-26-2019

PROJECT TITLE  
**THE JEWEL**  
 15 CASTLE LANE  
 O'FALLON, MO 63366

**GRIMES CONSULTING, INC.**  
 Civil Engineering & Surveying Services  
 13300 OLD TESSON ROAD  
 ST. LOUIS, MO 63128  
 PH. (314) 849-6100  
 FAX (314) 849-6010  
 www.grimesconsulting.com



Developer / Owner Information  
 VITA Residential  
 CONTACT: Steve Sisson  
 3333 Aspen Grove Dr  
 Franklin, TN 37067  
 Email: steve@vitapmg.com

P+Z No. 19-001400  
 Approval Date: 6/6/2019

City No.

Page No.

**C5.0**

GRADING PLAN